



February 3, 2017

Senator Mary Kiffmeyer
Chair, State Government Finance and Policy and Elections
Minnesota Senate
95 University Ave. W
Saint Paul, MN 55155

Representative Sarah Anderson
Chair, State Government Finance
Minnesota House of Representatives
100 Rev. Dr. Martin Luther King Jr. Blvd.
Saint Paul, MN 55155

Dear Senator Kiffmeyer and Representative Anderson,

Enclosed and attached is information responsive to your letter dated December 22, 2016. Please let me know if you have questions or would like additional information; we would be happy to work with you and your staff to provide additional information.

Sincerely,

A handwritten signature in black ink, appearing to read 'T. Baden', is positioned above the typed name.

Thomas A. Baden Jr.
Commissioner and State Chief Information Officer

Item A (1)– Special Revenue Funds and Fee-Dedicated Accounts. This information can be found in the Governor’s budget recommendations documentation for MN.IT Services on pages 3-6: <https://mn.gov/mmb-stat/documents/budget/2018-19-biennial-budget-books/governors-recommendations-january-2017/mn.it-services.pdf>

Item A (2) – Federal funds. While other agencies use federal funds to pay for services provided by MN.IT, MN.IT directly receives no funding from federal government agencies.

Item A (3) – Statutory and Open appropriations. Please see the “MNIT Open and Stat Appr” tab in the attached “MNIT 2017 SGF Response” Excel document.

Item B – Indirect Cost Fund. MN.IT does not have an indirect cost fund/IDC.

Item C – Chargebacks imposed by other state agencies. Please see the “MNIT Transfers” and “MNIT Interagency” tabs in the attached “MNIT 2017 SGF Response” Excel document. .

Item D – Carryforward. This information can be found in the Governor’s budget recommendations documentation for MN.IT Services on pages 3-6: <https://mn.gov/mmb-stat/documents/budget/2018-19-biennial-budget-books/governors-recommendations-january-2017/mn.it-services.pdf>

Item E (1) - Organization chart. Please see the attached pdf entitled “Attachment – Response to E(1).”

Item E (2) – List of pending position requests. Please see the attached pdf entitled “Attachment – Response to E(2).”

Item E (3) – FTE counts by fund since 2009. Please see the “MNIT FTE by Fund” tab in the attached “MNIT 2017 SGF Response” Excel document. Please note this tab provides both a SWIFT-derived, funding-based FTE count and a SEMA4-derived, reporting-based FTE count.

Item E (4) – Number of FTEs by class. Please see the “FTE by Barg. Unit” tab in the attached Excel document. Please note this tab provides both a SWIFT-derived, funding-based FTE count and a SEMA4-derived, reporting-based FTE count.

Item E (5) – Salary history. Please see the “Dep. Comm. Wage Summary,” “Asst. Comm. Wage Summary,” and “Managerial Wage Summary” tabs in the attached “MNIT 2017 SGF Response” Excel document.

Item F – Potential Adjustments. Roughly 0.5% of MNIT’s total spend is directly appropriated from the general fund. If this direct appropriation were reduced, our ability to deliver computer forensics services both inside and outside the executive branch, as well as to provide IT and geospatial leadership and oversight, would be significantly hindered.

As it relates to the remainder of MN.IT spend, roughly 23% of MN.IT’s FY16 actual spend occurred through the enterprise rate package, and roughly 77% occurred as a direct pass-through charge to agencies to support their local-agency MN.IT staff and services. Negative adjustment to this portion of MN.IT spend would require discussion with our agency partners to identify what MN.IT services, staff or private sector tools or services could be reduced, delayed or avoided while maintaining critical operations.

Item G (1) – Rulemaking. MN.IT Services has no rulemaking authority.

Item G (2) - Future federal funding. MN.IT Services has no plans to seek federal funding in the next two years.

Item G (3) - Transfers. No internal financial transfers took place during the current biennium.

Item G (4) - Vehicles. Please see the "Leased Vehicles" tab in the attached "MNIT 2017 SGF Response" Excel document.

Item 5 – Pending lawsuits. Risk Management. Please see the attached pdf entitled "Response to G(5)."

Unbalanced Transfers
 Returns only those transfers within the selected agency where the journal ID does NOT sum to zero. This identifies only those transfers (in and out) that originate from, or are sent to, other agencies.
 Time run: 1/27/2017 9:33:50 AM

Agency: G46 - MN.IT Services

Fund Cd	Trans Type	Journal Id	Approp Id	Name	Posted Date	Transfer Amt	Description	Legal Cba 1	Legal Cba 2
2000	Transfer In	0000091891	G464010	Int Elect Licen Sys Purch Acct	9/29/2011	7,985		MS 16E.22	
Grand Total						7,985			

Agency: G46 - MN.IT Services

Fund Cd	Trans Type	Journal Id	Approp Id	Name	Posted Date	Transfer Amt	Description	Legal Cba 1	Legal Cba 2
1000	Transfer Out	0000005989	G465000	State CIO - MN.IT Services	8/25/2011	(15,000)	Transfer to Governor's Office for Federal Affairs work. Policy abbeions, communications specialists and consultant services staff. Legal citation: MAD PROJECT NUMBER 2012-062, MS 168.001, 2(4), 168.36, 168.48, 2(T) AND 471.59	111.010.01	
1000	Transfer Out	0000316932	G465000	State CIO - MN.IT Services	9/15/2012	(5,000)		111.010.01	
5500	Transfer Out	0000178115	G464601	MN.IT Services	11/22/2011	(1,309,427)	Dec 2011 ML Payment	MS 16E.14.2	
5500	Transfer Out	0000179820	G464601	MN.IT Services	11/23/2011	(323,570)	Correct Journal ID 178415	MS 16E.14.2	
5500	Transfer Out	0000179897	G464601	MN.IT Services	11/23/2011	(323,570)	Dec 2011 ML payment ML13	MS 16E.14.2	
5500	Transfer Out	0000477137	G464601	MN.IT Services	5/24/2012	(1,342,354)	June 2012 Master Lease payments, 16A.85	MS 16E.14.2	
5500	Transfer Out	0000480244	G464601	MN.IT Services	5/29/2012	(844,335)	Connections to ML 12 & 14 June 2012 pmts	MS 16E.14.2	
5500	Transfer Out	0000480246	G464601	MN.IT Services	5/29/2012	(238)	Connections to ML 14 June pmts	MS 16E.14.2	
5500	Transfer Out	0000480248	G464601	MN.IT Services	5/29/2012	(644,335)	ML 12 & 14 June payments	MS 16E.14.2	
5500	Transfer Out	0000480249	G464601	MN.IT Services	5/29/2012	(238)	ML 14 June 2012 pmts	MS 16E.14.2	
Grand Total					10/10/2011	(2,941,784)			

Agency: G46 - MN.IT Services

Budget FY: 2013

Fund Cd	Trans Type	Journal Id	Approp Id	Name	Posted Date	Transfer Amt	Description	Legal Cba 1	Legal Cba 2
1000	Transfer Out	0000544553	G465000	State CIO - MN.IT Services	7/3/2012	(15,000)	Governor's Office payment. Invt 038-13-20-INT	111.010.01.010.000	
1000	Transfer Out	0001118571	G465000	State CIO - MN.IT Services	6/18/2013	(19,170)	Land sales requirement transfer per Laws 111.002.04.79	111.010.01.010.000	
2000	Transfer Out	0001095970	G465002	Mn Geospatial Info Office	8/12/2013	(15,700)	Per MMB/MNIT memo dated 7/26/2013: transfer of IT savings. Laws 111.010.04.08E	111.010.01.011.002	111.010.04.006.000
2000	Transfer Out	0001167334	G466004	Telecommunications Access MN	7/23/2013	(210,317)	Transfer of unspent fund to TAM fund. 111.002.02.004.0C1	111.002.02.004.0C1	
5500	Transfer Out	0000693769	G464601	MN.IT Services	8/29/2012	(23,000)		MS 16E.14.2	
5500	Transfer Out	0000777078	G464601	MN.IT Services	11/27/2012	(897,530)	Master Lease 12 Payment Principal & Interest, MS 16A.85	MS 16E.14.2	
5500	Transfer Out	0000777080	G464601	MN.IT Services	11/27/2012	(497,782)	Master Lease 13 Payment Principal & Interest 12/7/2012; MS 16A.85	MS 16E.14.2	
5500	Transfer Out	0000779084	G464601	MN.IT Services	11/27/2012	(893,523)	Master Lease 14 Payment Principal & Interest 12/1/2012; MS 16A.85	MS 16E.14.2	
5500	Transfer Out	0001034052	G464601	MN.IT Services	5/23/2013	(318,341)	FY13 Master Lease 12 Payment Principal + Interest 6/7/2013, per MS 16A.85	MS 16E.14.2	
5500	Transfer Out	0001034058	G464601	MN.IT Services	5/23/2013	(497,782)	FY13 Master Lease 13 Payment Principal + Interest, per MS 16A.85	MS 16E.14.2	
5500	Transfer Out	0001034060	G464601	MN.IT Services	5/23/2013	(717,151)	FY13 Master Lease 14 Payment Principal + Interest, per MS 16A.85	MS 16E.14.2	
1000	Transfer In	0000544783	G465002	Mn Geospatial Info Office	7/2/2012	800,000		111.010.01.011.002	111.010.04.006.000
1000	Transfer In	0000670172	G465002	Mn Geospatial Info Office	9/17/2012	11,970		111.010.01.011.002	111.010.04.006.000
1000	Transfer In	0000927481	G465002	Mn Geospatial Info Office	3/19/2013	808		111.010.01.011.002	111.010.04.006.000
2000	Transfer In	0000693730	G466004	Telecommunications Access MN	9/16/2012	230,000		111.002.02.004.0C1	
2001	Transfer In	0001163481	G466000	Info/Telecom Technology Acct	7/16/2013	33,333		MS 16E.21	
2001	Transfer In	0001163516	G466000	Info/Telecom Technology Acct	7/16/2013	33,333		MS 16E.21	
2001	Transfer In	0001163520	G466000	Info/Telecom Technology Acct	7/16/2013	33,333		MS 16E.21	
2001	Transfer In	0001163527	G466000	Info/Telecom Technology Acct	7/16/2013	257,047		MS 16E.21	
2001	Transfer In	0001163532	G466000	Info/Telecom Technology Acct	7/16/2013	125,000		MS 16E.21	
2001	Transfer In	0001163538	G466000	Info/Telecom Technology Acct	7/16/2013	284,277		MS 16E.21	
2001	Transfer In	0001163543	G466000	Info/Telecom Technology Acct	7/16/2013	345,893		MS 16E.21	
2001	Transfer In	0001163546	G466000	Info/Telecom Technology Acct	7/16/2013	35,867		MS 16E.21	
2001	Transfer In	0001163550	G466000	Info/Telecom Technology Acct	7/16/2013	33,961		MS 16E.21	
2001	Transfer In	0001163563	G466000	Info/Telecom Technology Acct	7/17/2013	100,000		MS 16E.21	
2001	Transfer In	0001167366	G466000	Info/Telecom Technology Acct	7/24/2013	125,000		MS 16E.21	
2001	Transfer In	0001170931	G466000	Info/Telecom Technology Acct	7/22/2013	78,074		MS 16E.21	
2001	Transfer In	0001170933	G466000	Info/Telecom Technology Acct	7/22/2013	1,200,000		MS 16E.21	
2001	Transfer In	0001170937	G466000	Info/Telecom Technology Acct	7/22/2013	200,000		MS 16E.21	
2001	Transfer In	0001174207	G466000	Info/Telecom Technology Acct	7/24/2013	50,000		MS 16E.21	
2001	Transfer In	0001174211	G466000	Info/Telecom Technology Acct	7/24/2013	315,000		MS 16E.21	
2001	Transfer In	0001174222	G466000	Info/Telecom Technology Acct	7/24/2013	200,000		MS 16E.21	
2001	Transfer In	0001174223	G466000	Info/Telecom Technology Acct	7/24/2013	90,000		MS 16E.21	

MNIT Transfers

2001	Transfer In	0001174227	G466000	Info/Telecom Technology Acct	7/24/2013	54,400	MS 16E.21
2001	Transfer In	0001174228	G466000	Info/Telecom Technology Acct	7/24/2013	9,650	MS 16E.21
2001	Transfer In	0001174231	G466000	Info/Telecom Technology Acct	7/24/2013	29,352	MS 16E.21
2001	Transfer In	0001174336	G466000	Info/Telecom Technology Acct	7/25/2013	85,000	MS 16E.21
2001	Transfer In	0001174420	G466000	Info/Telecom Technology Acct	7/25/2013	800,000	MS 16E.21
2001	Transfer In	0001175778	G466000	Info/Telecom Technology Acct	7/29/2013	28,000	MS 16E.21
2001	Transfer In	0001175784	G466000	Info/Telecom Technology Acct	7/29/2013	14,000	MS 16E.21
2001	Transfer In	0001176004	G466000	Info/Telecom Technology Acct	7/29/2013	300,000	MS 16E.21
2001	Transfer In	0001176006	G466000	Info/Telecom Technology Acct	8/6/2013	100,000	MS 16E.21
2001	Transfer In	0001194059	G466000	Info/Telecom Technology Acct	8/9/2013	670,000	MS 16E.21
2001	Transfer In	0001194062	G466000	Info/Telecom Technology Acct	8/9/2013	100,000	MS 16E.21
2001	Transfer In	0001194065	G466000	Info/Telecom Technology Acct	8/9/2013	100,000	MS 16E.21
2001	Transfer In	0001194066	G466000	Info/Telecom Technology Acct	8/9/2013	70,000	MS 16E.21
2001	Transfer In	0001194070	G466000	Info/Telecom Technology Acct	8/9/2013	50,000	MS 16E.21
2001	Transfer In	0001194072	G466000	Info/Telecom Technology Acct	8/9/2013	244,000	MS 16E.21
2001	Transfer In	0001194074	G466000	Info/Telecom Technology Acct	8/6/2013	750,000	MS 16E.21
2001	Transfer In	0001194077	G466000	Info/Telecom Technology Acct	8/6/2013	250,000	MS 16E.21
2001	Transfer In	0001194094	G466000	Info/Telecom Technology Acct	7/30/2013	2,883,000	MS 16E.21
2001	Transfer In	0001194101	G466000	Info/Telecom Technology Acct	7/30/2013	736,000	MS 16E.21
2001	Transfer In	0001194102	G466000	Info/Telecom Technology Acct	7/30/2013	245,000	MS 16E.21
2001	Transfer In	0001194102	G466000	Info/Telecom Technology Acct	7/30/2013	82,000	MS 16E.21
2001	Transfer In	0001194112	G466000	Info/Telecom Technology Acct	7/30/2013	82,000	MS 16E.21
2001	Transfer In	0001194116	G466000	Info/Telecom Technology Acct	7/30/2013	82,000	MS 16E.21
2001	Transfer In	0001194120	G466000	Info/Telecom Technology Acct	7/30/2013	547,500	MS 16E.21
2001	Transfer In	0001194126	G466000	Info/Telecom Technology Acct	7/30/2013	157,500	MS 16E.21
2001	Transfer In	0001194127	G466000	Info/Telecom Technology Acct	7/30/2013	45,000	MS 16E.21
2001	Transfer In	0001194128	G466000	Info/Telecom Technology Acct	7/30/2013	547,500	MS 16E.21
2001	Transfer In	0001194129	G466000	Info/Telecom Technology Acct	7/30/2013	157,500	MS 16E.21
2001	Transfer In	0001194131	G466000	Info/Telecom Technology Acct	7/30/2013	45,000	MS 16E.21
2001	Transfer In	0001195333	G466000	Info/Telecom Technology Acct	7/30/2013	146,000	MS 16E.21
2001	Transfer In	0001195342	G466000	Info/Telecom Technology Acct	7/30/2013	42,000	MS 16E.21
2001	Transfer In	0001195343	G466000	Info/Telecom Technology Acct	7/30/2013	12,000	MS 16E.21
2001	Transfer In	0001195346	G466000	Info/Telecom Technology Acct	7/30/2013	33,855	MS 16E.21
2001	Transfer In	0001195348	G466000	Info/Telecom Technology Acct	7/30/2013	9,742	MS 16E.21
2001	Transfer In	0001195348	G466000	Info/Telecom Technology Acct	7/30/2013	2,783	MS 16E.21
2001	Transfer In	0001195348	G466000	Info/Telecom Technology Acct	7/30/2013	42,358	MS 16E.21
2001	Transfer In	0001195352	G466000	Info/Telecom Technology Acct	7/30/2013	12,185	MS 16E.21
2001	Transfer In	0001195354	G466000	Info/Telecom Technology Acct	7/30/2013	3,481	MS 16E.21
2001	Transfer In	0001195357	G466000	Info/Telecom Technology Acct	7/30/2013	14,600	MS 16E.21
2001	Transfer In	0001195359	G466000	Info/Telecom Technology Acct	7/30/2013	4,200	MS 16E.21
2001	Transfer In	0001195581	G466000	Info/Telecom Technology Acct	7/30/2013	1,200	MS 16E.21
2001	Transfer In	0001199008	G466000	Info/Telecom Technology Acct	8/1/2013	4,340	MS 16E.21
2001	Transfer In	0001199012	G466000	Info/Telecom Technology Acct	8/1/2013	20,649	MS 16E.21
2001	Transfer In	0001201759	G466000	Info/Telecom Technology Acct	8/4/2013	26,000	MS 16E.21
2001	Transfer In	0001205436	G466000	Info/Telecom Technology Acct	8/7/2013	10,000	MS 16E.21
2001	Transfer In	0001205540	G466000	Info/Telecom Technology Acct	8/7/2013	43,000	MS 16E.21
2001	Transfer In	0001205562	G466000	Info/Telecom Technology Acct	8/7/2013	176,000	MS 16E.21
2001	Transfer In	0001205565	G466000	Info/Telecom Technology Acct	8/7/2013	235,000	MS 16E.21
2001	Transfer In	0001205597	G466000	Info/Telecom Technology Acct	8/7/2013	188,850	MS 16E.21
2001	Transfer In	0001205666	G466000	Info/Telecom Technology Acct	8/7/2013	23,484	MS 16E.21
2001	Transfer In	0001205689	G466000	Info/Telecom Technology Acct	8/7/2013	50,000	MS 16E.21
2001	Transfer In	0001207913	G466000	Info/Telecom Technology Acct	8/9/2013	200,000	MS 16E.21
2001	Transfer In	0001207919	G466000	Info/Telecom Technology Acct	8/9/2013	121,236	MS 16E.21
2001	Transfer In	0001223061	G466000	Info/Telecom Technology Acct	8/14/2013	100,000	MS 16E.21
5500	Transfer In	0000832864	G464601	MN/IT Services	8/16/2012	187,789	MS 16E.14.2
5500	Transfer In	0000877794	G464601	MN/IT Services	7/30/2013	11,878	MS 16E.14.2
5500	Transfer In	0001205555	G464601	MN/IT Services	8/8/2013	3,712	MS 16E.14.2
5500	Transfer In	0001205566	G464601	MN/IT Services	8/9/2013	8,447	MS 16E.14.2
5500	Transfer In	0001207750	G464601	MN/IT Services	8/9/2013	4,575	MS 16E.14.2
5500	Transfer In	0001209746	G464601	MN/IT Services	8/8/2013	1,050,884	MS 16E.14.2

Fund Cd	Trans Type	Journal Id	Approp Id	Name	Posted Date	Transfer Amt.	Legal Ctr.
5500	Transfer In	0001205766	G64601	MN.IT Services	8/8/2013	37,925	MS 16E.14.2
5500	Transfer In	0001205770	G64601	MN.IT Services	8/8/2013	14,725	MS 16E.14.2
5500	Transfer In	0001205772	G64601	MN.IT Services	8/8/2013	13,943	MS 16E.14.2
5500	Transfer In	0001205775	G64601	MN.IT Services	8/8/2013	26,922	MS 16E.14.2
5500	Transfer In	0001205854	G64601	MN.IT Services	8/8/2013	5,130	MS 16E.14.2
5500	Transfer In	0001205859	G64601	MN.IT Services	8/8/2013	7,617	MS 16E.14.2
5500	Transfer In	0001205860	G64601	MN.IT Services	8/8/2013	81,842	MS 16E.14.2
5500	Transfer In	0001205865	G64601	MN.IT Services	8/8/2013	4,418	MS 16E.14.2
5500	Transfer In	0001205866	G64601	MN.IT Services	8/8/2013	2,923	MS 16E.14.2
5500	Transfer In	0001205881	G64601	MN.IT Services	8/8/2013	7,264	MS 16E.14.2
5500	Transfer In	0001205882	G64601	MN.IT Services	8/8/2013	2,218	MS 16E.14.2
5500	Transfer In	0001205885	G64601	MN.IT Services	8/8/2013	936	MS 16E.14.2
5500	Transfer In	0001205886	G64601	MN.IT Services	8/8/2013	120	MS 16E.14.2
5500	Transfer In	0001207645	G64601	MN.IT Services	8/9/2013	25,666	MS 16E.14.2
5500	Transfer In	0001207659	G64601	MN.IT Services	8/9/2013	1,681	MS 16E.14.2
5500	Transfer In	0001207759	G64601	MN.IT Services	8/9/2013	12,081	MS 16E.14.2
5500	Transfer In	0001207773	G64601	MN.IT Services	8/9/2013	22,805	MS 16E.14.2
5500	Transfer In	0001207782	G64601	MN.IT Services	8/9/2013	12,012	MS 16E.14.2
5500	Transfer In	0001207800	G64601	MN.IT Services	8/9/2013	7,450	MS 16E.14.2
5500	Transfer In	0001207849	G64601	MN.IT Services	8/9/2013	2,525	MS 16E.14.2
5500	Transfer In	0001207862	G64601	MN.IT Services	8/9/2013	14,621	MS 16E.14.2
5500	Transfer In	0001207872	G64601	MN.IT Services	8/9/2013	2,759	MS 16E.14.2
5500	Transfer In	0001207880	G64601	MN.IT Services	8/9/2013	1,355	MS 16E.14.2
5500	Transfer In	0001207882	G64601	MN.IT Services	8/9/2013	508	MS 16E.14.2
5500	Transfer In	0001207889	G64601	MN.IT Services	8/12/2013	12,251	MS 16E.14.2
5500	Transfer In	0001207926	G64601	MN.IT Services	8/9/2013	54,015	MS 16E.14.2
5500	Transfer In	0001207933	G64601	MN.IT Services	8/9/2013	970	MS 16E.14.2
5500	Transfer In	0001207936	G64601	MN.IT Services	8/9/2013	17,056	MS 16E.14.2
5500	Transfer In	0001207940	G64601	MN.IT Services	8/9/2013	10,229	MS 16E.14.2
5500	Transfer In	0001207943	G64601	MN.IT Services	8/9/2013	3,998	MS 16E.14.2
5500	Transfer In	0001209827	G64601	MN.IT Services	8/9/2013	98,066	MS 16E.14.2
5500	Transfer In	0001209870	G64601	MN.IT Services	8/12/2013	132,674	MS 16E.14.2
5500	Transfer In	0001809160	G64601	MN.IT Services	6/13/2014	(14,361)	MS 16E.14.2
5500	Transfer In	0001812067	G64601	MN.IT Services	8/14/2014	26,203	MS 16E.14.2
Grand Total						15,778,529	

Agency: G46 - MN.IT Services

Budget FY: 2014

Fund Cd	Trans Type	Journal Id	Approp Id	Name	Posted Date	Transfer Amt.	Legal Ctr.
1000	Transfer Out	0001163968	G465000	State CIO - MN.IT Services	7/17/2013	(18,645)	13 142 01 010 000
1000	Transfer Out	0001155737	G465000	State CIO - MN.IT Services	7/18/2013	(10,000)	13 142 01 010 000
5500	Transfer Out	0001381968	G464602	MN.IT Services Std Services	11/25/2013	(217,864)	MS 16E.14.2
5500	Transfer Out	0001381968	G464602	MN.IT Services Std Services	11/25/2013	(497,782)	MS 16E.14.2
5500	Transfer Out	0001381970	G464602	MN.IT Services Std Services	11/25/2013	(1,008,800)	MS 16E.14.2
5500	Transfer Out	0001488902	G464602	MN.IT Services Std Services	2/10/2014	(15,968)	MS 16E.14.2
5500	Transfer Out	000158773	G464602	MN.IT Services Std Services	5/27/2014	(497,782)	MS 16E.14.2
5500	Transfer Out	000158774	G464602	MN.IT Services Std Services	5/27/2014	(1,807,916)	MS 16E.14.2
1000	Transfer In	0001291529	G467005	DPS/BCA Criminal Reporting Sys	9/30/2013	1,360,000	13 086 01 012 01C
1000	Transfer In	0001354782	G467002	Elec. Sensitive Workbench Sys	11/5/2013	900,000	13 086 01 011 000
1000	Transfer In	0001381915	G467017	MDVA IT Upgrade Project	11/25/2013	618,000	13 142 01 035 002
1000	Transfer In	0001398968	G467017	MDVA IT Upgrade Project	12/5/2013	2,472,000	13 142 01 035 002
1000	Transfer In	0001441524	G467014	MMS Statewide Budget System	11/9/2013	2,046,189	13 142 03 073 000
1000	Transfer In	0001485910	G467011	High SW. Cancer Surveillance Sys	2/7/2014	60,120	13 142 03 023 000
1000	Transfer In	0001487490	G467000	BMS Case & Document Mgmt Sys	2/9/2014	100,000	13 085 01 007 008
1000	Transfer In	0001552780	G467016	MMS Talent Management	5/20/2014	1,500,000	13 142 03 073 000
1000	Transfer In	0001622235	G467006	ONE SW. Long Education Data Sys	5/9/2014	449,379	13 099 01 009 017
2000	Transfer In	0001415140	G466004	Telecommunications Access MN	7/11/2013	290,000	13 085 01 013 005
2000	Transfer In	0001291524	G467004	DPS/BCA Criminal History Sys	9/30/2013	2,980,000	13 086 01 012 038
2001	Transfer In	0001248896	G467009	MDVA IT Upgrades Homes	9/3/2013	618,000	13 142 01 035 002
2001	Transfer In	0001248898	G467009	MDVA IT Upgrades Homes	9/3/2013	2,472,000	13 142 01 035 002
2001	Transfer In	0001364009	G467009	MDVA IT Upgrades Homes	11/27/2013	(618,000)	13 142 01 035 002
2001	Transfer In	0001371954	G467009	MDVA IT Upgrades Homes	11/27/2013	(2,472,000)	13 142 01 035 002

MNIT Transfers

2001	Transfer In	0001711231	0466005	Info/Telcom Technology Acct	6/26/2014	215,100		MS 16E.21
5500	Transfer In	0001790105	0464605	Dir Of Ext Tech Pgm 4 BACT 41	8/1/2014	2,000,000		MS 16E.14.2
5500	Transfer In	0001797465	0464602	MN.IT Services Sgd Services	8/8/2014	2,176		MS 16E.14.2
	Grand Total					9,826,467		

Agency: G46 - MN.IT Services

Budget FY: 2015

Fund Cd	Trans Type	Journal Id	Appropri Id	Name	Posted Date	Transfer Amt	Description	Legal Cde
1000	Transfer Out	0001731765	G465000	State CIO - MN.IT Services	7/7/2014	(24,700)	to Governor's Office for Federal affairs work. Invoice # G39-15-20-INT; MS 471.59	13 142.01.010.000 -
2000	Transfer Out	0001556644	G466004	Telecommunications Access MN	11/27/2015	(22,787)	1/15 TAM funds to Commerce	13 085.01.013.005 -
5500	Transfer Out	0001969265	G464602	MN.IT Services Sgd Services	11/27/2014	(2,574,700)	FY15 Master Lease 13,14 & 15 principal and interest; payments per MMB memo dated 11/19/2014 and MS	MS 16E.14.2 -
5500	Transfer Out	0002092507	G464602	MN.IT Services Sgd Services	2/18/2015	(102)	MLLS execution expense	MS 16E.14.2 -
5500	Transfer Out	0001317191	G464602	MN.IT Services Sgd Services	3/18/2015	(15,340)	Transfer per Interagency Agreement for executive recruiting services provided. HR training budget.	MS 16E.14.2 -
5500	Transfer Out	0002590659	G464602	MN.IT Services Sgd Services	2/28/2015	(2,990,977)	FY15 Master Lease 13,14 & 15 principal and interest; payments per MMB memo dated 05/28/2015 and MS	MS 16E.14.2 -
1000	Transfer In	0001727554	G467003	DPS/BCA Criminal History Sys	7/1/2014	580,000		13 086.01.012.038 -
1000	Transfer In	0001771554	G467005	DPS/BCA Criminal Reporting Sys	7/1/2014	1,290,000		13 086.01.012.03C 1
1000	Transfer In	0001730411	G467011	Hhh SW Cancer Surveillance Sys	7/9/2014	50,000		13 142.03.023.000 1
1000	Transfer In	0001730416	G467011	Hhh SW Cancer Surveillance Sys	7/9/2014	210,993		13 142.03.023.000 1
1000	Transfer In	0001734321	G467017	MDVA IT Upgrade Project	7/9/2014	382,000		13 142.01.035.002 1
1000	Transfer In	0001734334	G467017	MDVA IT Upgrade Project	7/9/2014	1,528,000		13 142.01.035.002 1
1000	Transfer In	0001820544	G467006	DHE SW Long Education Data Sys	8/27/2014	582,000		13 099.01.003.017 -
1000	Transfer In	0001919992	G467008	MOE Spec Ed Pppswrk Budget	10/30/2014	1,483,119		13 116.05.031.008 -
1000	Transfer In	0001984542	G467016	MMB Talent Management	12/5/2014	365,000		13 142.03.023.000 1
1000	Transfer In	0002114977	G467016	MMB Talent Management	3/5/2015	476,300		13 142.03.023.000 1
2000	Transfer In	0001727554	G467004	DPS/BCA Criminal History Sys	7/1/2014	2,000,000		13 086.01.012.038 -
2000	Transfer In	0001728736	G466004	Telecommunications Access MN	7/2/2014	72,500		13 085.01.013.005 -
2000	Transfer In	0001882492	G466004	Telecommunications Access MN	10/1/2014	72,500		13 085.01.013.005 -
2000	Transfer In	0002026331	G466004	Telecommunications Access MN	7/2/2015	72,500		13 085.01.013.005 -
2000	Transfer In	0002158110	G467010	DPS/DVS Phone System	3/31/2015	521,000		13 117.01.005.04A 1
2000	Transfer In	0001160675	G466004	Telecommunications Access MN	4/1/2015	71,500		13 085.01.013.005 -
2000	Transfer In	0002393702	G466010	Em Elect Licen Sys Surch Acct	8/7/2015	2,227		MS 16E.22 -
2000	Transfer In	0002407390	G466010	Em Elect Licen Sys Surch Acct	8/12/2015	42		MS 16E.22 -
2001	Transfer In	0002679723	G466000	Info/Telcom Technology Acct	6/11/2015	900,000		MS 16E.21 -
2001	Transfer In	0002318918	G466000	Info/Telcom Technology Acct	7/16/2015	95,000		MS 16E.21 -
2001	Transfer In	0002319105	G466000	Info/Telcom Technology Acct	7/8/2015	170,000		MS 16E.21 -
2001	Transfer In	0002319107	G466000	Info/Telcom Technology Acct	7/8/2015	287,269		MS 16E.21 -
2001	Transfer In	0002319110	G466000	Info/Telcom Technology Acct	7/2/2015	490,000		MS 16E.21 -
2001	Transfer In	0002319120	G466000	Info/Telcom Technology Acct	7/8/2015	1,360,000		MS 16E.21 -
2001	Transfer In	0002319127	G466000	Info/Telcom Technology Acct	7/2/2015	382,000		MS 16E.21 -
2001	Transfer In	0002319140	G466000	Info/Telcom Technology Acct	7/8/2015	490,000		MS 16E.21 -
2001	Transfer In	0002319143	G466000	Info/Telcom Technology Acct	7/2/2015	150,000		MS 16E.21 -
2001	Transfer In	0002319149	G466000	Info/Telcom Technology Acct	7/2/2015	20,000		MS 16E.21 -
2001	Transfer In	0002319152	G466000	Info/Telcom Technology Acct	7/2/2015	5,000		MS 16E.21 -
2001	Transfer In	0002319155	G466000	Info/Telcom Technology Acct	7/8/2015	47,000		MS 16E.21 -
2001	Transfer In	0002319160	G466000	Info/Telcom Technology Acct	7/8/2015	50,000		MS 16E.21 -
2001	Transfer In	0002319164	G466000	Info/Telcom Technology Acct	7/2/2015	250,000		MS 16E.21 -
2001	Transfer In	0002319168	G466000	Info/Telcom Technology Acct	7/8/2015	250,000		MS 16E.21 -
2001	Transfer In	0002319169	G466000	Info/Telcom Technology Acct	7/8/2015	900,000		MS 16E.21 -
2001	Transfer In	0002321070	G466000	Info/Telcom Technology Acct	6/30/2015	800,000		MS 16E.21 -
2001	Transfer In	0002321089	G466000	Info/Telcom Technology Acct	6/30/2015	50,000		MS 16E.21 -
2001	Transfer In	0002321102	G466000	Info/Telcom Technology Acct	6/30/2015	50,000		MS 16E.21 -
2001	Transfer In	0002321899	G466000	Info/Telcom Technology Acct	7/28/2015	602,750		MS 16E.21 -
2001	Transfer In	0002321906	G466000	Info/Telcom Technology Acct	7/27/2015	30,000		MS 16E.21 -
2001	Transfer In	0002321908	G466000	Info/Telcom Technology Acct	7/28/2015	10,000		MS 16E.21 -
2001	Transfer In	0002321911	G466000	Info/Telcom Technology Acct	7/28/2015	150,000		MS 16E.21 -
2001	Transfer In	0002321917	G466000	Info/Telcom Technology Acct	7/28/2015	15,000		MS 16E.21 -
2001	Transfer In	0002321918	G466000	Info/Telcom Technology Acct	7/28/2015	10,000		MS 16E.21 -
2001	Transfer In	0002321920	G466000	Info/Telcom Technology Acct	7/28/2015	3,000		MS 16E.21 -
2001	Transfer In	0002321923	G466000	Info/Telcom Technology Acct	7/29/2015	10,550		MS 16E.21 -
2001	Transfer In	0002321925	G466000	Info/Telcom Technology Acct	7/28/2015	42,000		MS 16E.21 -
2001	Transfer In	0002321934	G466000	Info/Telcom Technology Acct	7/27/2015	30,000		MS 16E.21 -

MNIT Transfers

2001	Transfer In	0002325415	G466000	Info/Telecom Technology Acct	7/17/2015	14,000	MS 16E 21
2001	Transfer In	0002325456	G466000	Info/Telecom Technology Acct	7/17/2015	17,000	MS 16E 21
2001	Transfer In	0002325748	G466000	Info/Telecom Technology Acct	7/20/2015	150,000	MS 16E 21
2001	Transfer In	0002327221	G466000	Info/Telecom Technology Acct	7/16/2015	30,000	MS 16E 21
2001	Transfer In	0002327258	G466000	Info/Telecom Technology Acct	7/16/2015	250,000	MS 16E 21
2001	Transfer In	0002328772	G466000	Info/Telecom Technology Acct	7/16/2015	75,000	MS 16E 21
2001	Transfer In	0002328733	G466000	Info/Telecom Technology Acct	7/16/2015	50,000	MS 16E 21
2001	Transfer In	0002328792	G466000	Info/Telecom Technology Acct	7/13/2015	12,920	MS 16E 21
2001	Transfer In	0002328797	G466000	Info/Telecom Technology Acct	7/16/2015	375,000	MS 16E 21
2001	Transfer In	0002329042	G466000	Info/Telecom Technology Acct	7/16/2015	100,000	MS 16E 21
2001	Transfer In	0002329047	G466000	Info/Telecom Technology Acct	7/16/2015	350,000	MS 16E 21
2001	Transfer In	0002329053	G466000	Info/Telecom Technology Acct	7/16/2015	100,000	MS 16E 21
2001	Transfer In	0002329063	G466000	Info/Telecom Technology Acct	7/16/2015	375,000	MS 16E 21
2001	Transfer In	0002329057	G466000	Info/Telecom Technology Acct	7/16/2015	50,000	MS 16E 21
2001	Transfer In	0002329255	G466000	Info/Telecom Technology Acct	7/10/2015	9,500	MS 16E 21
2001	Transfer In	0002329492	G466000	Info/Telecom Technology Acct	7/24/2015	265,000	MS 16E 21
2001	Transfer In	0002329916	G466000	Info/Telecom Technology Acct	7/19/2015	86,800	MS 16E 21
2001	Transfer In	0002329933	G466000	Info/Telecom Technology Acct	7/13/2015	1,000,000	MS 16E 21
2001	Transfer In	0002329404	G466000	Info/Telecom Technology Acct	7/16/2015	105,000	MS 16E 21
2001	Transfer In	0002329246	G466000	Info/Telecom Technology Acct	7/16/2015	170,000	MS 16E 21
2001	Transfer In	0002329241	G466000	Info/Telecom Technology Acct	7/16/2015	145,000	MS 16E 21
2001	Transfer In	0002329249	G466000	Info/Telecom Technology Acct	7/16/2015	30,000	MS 16E 21
2001	Transfer In	0002329586	G466000	Info/Telecom Technology Acct	7/20/2015	20,213	MS 16E 21
2001	Transfer In	0002329589	G466000	Info/Telecom Technology Acct	7/20/2015	21,340	MS 16E 21
2001	Transfer In	0002329593	G466000	Info/Telecom Technology Acct	7/20/2015	30,000	MS 16E 21
2001	Transfer In	0002329598	G466000	Info/Telecom Technology Acct	7/21/2015	5,000	MS 16E 21
2001	Transfer In	0002329600	G466000	Info/Telecom Technology Acct	7/21/2015	5,000	MS 16E 21
2001	Transfer In	0002329881	G466000	Info/Telecom Technology Acct	7/24/2015	441,000	MS 16E 21
2001	Transfer In	0002329886	G466000	Info/Telecom Technology Acct	7/24/2015	177,000	MS 16E 21
2001	Transfer In	0002329896	G466000	Info/Telecom Technology Acct	7/24/2015	175,000	MS 16E 21
2001	Transfer In	0002329899	G466000	Info/Telecom Technology Acct	7/24/2015	245,000	MS 16E 21
2001	Transfer In	0002329732	G466000	Info/Telecom Technology Acct	7/27/2015	30,000	MS 16E 21
2001	Transfer In	0002329743	G466000	Info/Telecom Technology Acct	7/27/2015	5,000	MS 16E 21
2001	Transfer In	0002328427	G466000	Info/Telecom Technology Acct	7/31/2015	860,000	MS 16E 21
2001	Transfer In	0002328428	G466000	Info/Telecom Technology Acct	7/31/2015	15,000	MS 16E 21
2001	Transfer In	0002328434	G466000	Info/Telecom Technology Acct	7/31/2015	1,040,000	MS 16E 21
2001	Transfer In	0002328424	G466000	Info/Telecom Technology Acct	7/31/2015	31,000	MS 16E 21
2001	Transfer In	0002328428	G466000	Info/Telecom Technology Acct	7/31/2015	2,135,000	MS 16E 21
2001	Transfer In	0002328430	G466000	Info/Telecom Technology Acct	7/31/2015	2,135,000	MS 16E 21
2001	Transfer In	0002328600	G466000	Info/Telecom Technology Acct	8/4/2015	24,407	MS 16E 21
2001	Transfer In	0002328767	G466000	Info/Telecom Technology Acct	8/4/2015	8,000	MS 16E 21
2001	Transfer In	0002328772	G466000	Info/Telecom Technology Acct	8/5/2015	1,925,000	MS 16E 21
2001	Transfer In	0002328773	G466000	Info/Telecom Technology Acct	8/5/2015	800,000	MS 16E 21
2001	Transfer In	0002328774	G466000	Info/Telecom Technology Acct	8/5/2015	775,000	MS 16E 21
2001	Transfer In	0002328794	G466000	Info/Telecom Technology Acct	8/5/2015	40,750	MS 16E 21
2001	Transfer In	0002329375	G466000	Info/Telecom Technology Acct	8/13/2015	51,000	MS 16E 21
2001	Transfer In	0002328949	G466000	Info/Telecom Technology Acct	8/6/2015	7,000	MS 16E 21
2001	Transfer In	0002328951	G466000	Info/Telecom Technology Acct	8/6/2015	50,000	MS 16E 21
2001	Transfer In	0002328978	G466000	Info/Telecom Technology Acct	8/5/2015	500,000	MS 16E 21
2001	Transfer In	0002328984	G466000	Info/Telecom Technology Acct	8/5/2015	79,000	MS 16E 21
2001	Transfer In	0002329130	G466000	Info/Telecom Technology Acct	8/6/2015	40,000	MS 16E 21
2001	Transfer In	0002329138	G466000	Info/Telecom Technology Acct	8/6/2015	295,000	MS 16E 21
2001	Transfer In	0002329133	G466000	Info/Telecom Technology Acct	8/6/2015	201,990	MS 16E 21
2001	Transfer In	0002329136	G466000	Info/Telecom Technology Acct	8/6/2015	65,000	MS 16E 21
2001	Transfer In	0002329132	G466000	Info/Telecom Technology Acct	8/6/2015	10,000	MS 16E 21
2001	Transfer In	0002329133	G466000	Info/Telecom Technology Acct	8/6/2015	65,000	MS 16E 21
2001	Transfer In	0002329136	G466000	Info/Telecom Technology Acct	8/6/2015	30,260	MS 16E 21
2001	Transfer In	0002329138	G466000	Info/Telecom Technology Acct	8/13/2015	24,650	MS 16E 21
2001	Transfer In	0002329139	G466000	Info/Telecom Technology Acct	8/13/2015	35,950	MS 16E 21
2001	Transfer In	0002329140	G466000	Info/Telecom Technology Acct	8/13/2015	18,250	MS 16E 21
2001	Transfer In	0002329157	G466000	Info/Telecom Technology Acct	8/13/2015	71,400	MS 16E 21
2001	Transfer In	0002329371	G466000	Info/Telecom Technology Acct	8/13/2015	10,000	MS 16E 21

MNIT Transfers

Fund Cd	Transf Type	Journal Id	Appropri Id	Agency	Posting Date	Transfer Amt.	Description	Legal Code 1	Legal Code 2
2001	Transfer In	0002391941	G466000	Info/Telecom Technology Acct	8/10/2015	1,023		MS 16E.21	
2001	Transfer In	0002391942	G466000	Info/Telecom Technology Acct	8/10/2015	10,995		MS 16E.21	
2001	Transfer In	0002391943	G466000	Info/Telecom Technology Acct	8/10/2015	795		MS 16E.21	
2001	Transfer In	0002391944	G466000	Info/Telecom Technology Acct	8/10/2015	1,200		MS 16E.21	
2001	Transfer In	0002391945	G466000	Info/Telecom Technology Acct	8/10/2015	2,549		MS 16E.21	
2001	Transfer In	0002391946	G466000	Info/Telecom Technology Acct	8/10/2015	12,833		MS 16E.21	
2001	Transfer In	0002391947	G466000	Info/Telecom Technology Acct	8/10/2015	3,928		MS 16E.21	
2001	Transfer In	0002391948	G466000	Info/Telecom Technology Acct	8/10/2015	59,214		MS 16E.21	
2001	Transfer In	0002391949	G466000	Info/Telecom Technology Acct	8/10/2015	33,890		MS 16E.21	
2001	Transfer In	0002391950	G466000	Info/Telecom Technology Acct	8/10/2015	12,954		MS 16E.21	
2001	Transfer In	0002391951	G466000	Info/Telecom Technology Acct	8/10/2015	100,962		MS 16E.21	
2001	Transfer In	0002391952	G466000	Info/Telecom Technology Acct	8/10/2015	102,952		MS 16E.21	
2001	Transfer In	0002392392	G466000	Info/Telecom Technology Acct	8/17/2015	145,000		MS 16E.21	
2001	Transfer In	0002393376	G466000	Info/Telecom Technology Acct	8/17/2015	45,000		MS 16E.21	
2001	Transfer In	0002393525	G466000	Info/Telecom Technology Acct	8/17/2015	60,000		MS 16E.21	
2001	Transfer In	0002393650	G466000	Info/Telecom Technology Acct	8/10/2015	31,000		MS 16E.21	
2001	Transfer In	0002393852	G466000	Info/Telecom Technology Acct	8/10/2015	73,000		MS 16E.21	
2001	Transfer In	0002393845	G466000	Info/Telecom Technology Acct	8/10/2015	614		MS 16E.21	
2001	Transfer In	0002403874	G466000	Info/Telecom Technology Acct	8/13/2015	5,450		MS 16E.21	
2001	Transfer In	0002404071	G466000	Info/Telecom Technology Acct	8/10/2015	1,308		MS 16E.21	
2001	Transfer In	0002407368	G466000	Info/Telecom Technology Acct	8/13/2015	134,834		MS 16E.21	
2001	Transfer In	0002409189	G466000	Info/Telecom Technology Acct	8/13/2015	3,035,934		MS 16E.21	
2001	Transfer In	0002410561	G466000	Info/Telecom Technology Acct	8/14/2015	418,000		MS 16E.21	
2001	Transfer In	0002411086	G466000	Info/Telecom Technology Acct	8/14/2015	15,000		MS 16E.21	
2001	Transfer In	0002411114	G466000	Info/Telecom Technology Acct	8/14/2015	40,000		MS 16E.21	
2001	Transfer In	0002410889	G466000	Info/Telecom Technology Acct	7/9/2016	11,539		MS 16E.21	
5500	Transfer In	0001767994	G464602	MN IT Services Std Services	7/18/2016	10,047,500		MS 16E.14.2	
5500	Transfer In	0001767994	G464603	MN IT Services Applications	7/25/2014	6,837,500		MS 16E.14.2	
5500	Transfer In	0001767994	G464605	MN IT Services Projects	7/25/2014	3,895,000		MS 16E.14.2	
5500	Transfer In	0002389820	G464602	MN IT Services Std Services	8/5/2015	10,047,500		MS 16E.14.2	
5500	Transfer In	0002389821	G464603	MN IT Services Applications	8/5/2015	6,837,500		MS 16E.14.2	
5500	Transfer In	0002389821	G464604	MN IT Services Projects	8/5/2015	3,895,000		MS 16E.14.2	
5500	Transfer In	0002389821	G464605	OE Of Ent Tech Pgm 4 BACT 41	8/5/2015	4,220,000		MS 16E.14.2	
5500	Transfer In	0002400095	G464605	OE Of Ent Tech Pgm 4 BACT 41	8/13/2015	2,000,000		MS 16E.14.2	
Grand Total						27,792,133			

Agency: G46 - MN, IT Services

Budget FY: 2016

Fund Cd	Transf Type	Journal Id	Appropri Id	Agency	Posting Date	Transfer Amt.	Description	Legal Code 1	Legal Code 2
1000	Transfer Out	0002405802	G455000	State GO - MN IT Services	8/12/2015	34,700	FY16 TXFR to Governor's Office for federal affairs work; policy advisors, communication specialists, constituent services and legal staff. Incr: 639 - LE-20-NIT	15 077 01 010 000	
2001	Transfer Out	0002393497	G466019	IRA - Education - Online IEP	7/1/2016	1,686,103	Legal Ctr: 16 189 029 017 000 Cancellation of Project - return funds to Education	MS 16E.21	
5500	Transfer Out	0002412730	G464602	MN IT Services Std Services	8/17/2015	18,800	Transfer for statewide executive recruiter for FY16	MS 16E.14.2	
5500	Transfer Out	0002572020	G464602	MN IT Services Std Services	11/25/2015	12,964,537	FY15 Master Lease 13,14 & 15 principal and interest payments per MMB memo dated 11/19/2015 and MS 16A.85.	MS 16E.14.2	
5500	Transfer Out	0002678956	G464602	MN IT Services Std Services	2/5/2016	16,279	Master Lease 16 - Program Expenses: 646 portion of setup costs for ML16 - per email from Sue Guraska 2/7/16.	MS 16E.14.2	
5500	Transfer Out	0002864604	G464602	MN IT Services Std Services	5/26/2016	3,023,700	MS 16A.85 1 Master Lease - June 1, 2016 Billing ML 14 Principal 1,661,936.12; Interest 25,312.93 - Total: 1,687,249.05 ML 15 Principal 1,279,300.86; Interest	MS 16E.14.2	
5500	Transfer Out	0002864610	G464602	MN IT Services Std Services	5/26/2016	19,388	MS 16A.85 1 Master Lease - June 1, 2016 Billing ML 16 Principal 18,818.72; Interest 569.49 - Total: 19,388.21	MS 16E.14.2	
1000	Transfer In	0002403926	G467006	OE SW Long Education Data Sys	8/13/2015	555,000		13 099 01 003 017	
1000	Transfer In	0002502988	G467018	Tax Court Case Mgt System	12/18/2015	180,000		15 085 01 006 00A	MS 16E.0466
2000	Transfer In	0002325779	G466004	Telecommunications Access MN	7/2/2015	72,500		151 001 01 008 005	
2000	Transfer In	0002325783	G466017	Telecommunications Access MN	7/2/2015	32,500		151 001 01 008 005	
2000	Transfer In	0002495301	G466004	Telecommunications Access MN	10/16/2015	72,500		151 001 01 008 005	
2000	Transfer In	0002495308	G466017	Telecommunications Access MN	10/16/2015	32,500		151 001 01 008 005	
2000	Transfer In	0002654870	G466004	Telecommunications Access MN	1/7/2016	72,500		151 001 01 008 005	
2000	Transfer In	0002654878	G466017	Telecommunications Access MN	1/7/2016	32,500		151 001 01 008 005	
2000	Transfer In	0002787952	G466004	Telecommunications Access MN	4/5/2016	72,500		151 001 01 008 005	
5500	Transfer In	0002382312	G464602	MN IT Services Std Services	7/30/2015	15,835,814		MS 16E.14.2	
5500	Transfer In	0002382312	G464603	MN IT Services Applications	7/30/2015	19,563,886		MS 16E.14.2	
5500	Transfer In	0002382314	G464604	MN IT Services Projects	7/30/2015	4,657,592		MS 16E.14.2	
5500	Transfer In	0002382314	G464605	OE Of Ent Tech Pgm 4 BACT 41	7/30/2015	6,210,629		MS 16E.14.2	
5500	Transfer In	0002320229	G464602	MN IT Services Std Services	10/30/2015	4,370,087		MS 16E.14.2	

MINIT Transfers

Fund Ctl	Trans Type	Journal Id	Approp Id	Name	Posted Date	Transfer Amt	Description	Legal Crs 1	Legal Crs 2
5500	Transfer In	0002530259	6464603	MIN.IT Services Applications	10/20/2015	5,645,377		MS 16E.14.2	
5500	Transfer In	0002530260	6464604	MIN.IT Services Projects	10/20/2015	1,344,138		MS 16E.14.2	
5500	Transfer In	0002530260	6464605	Dir. Of Ent Tech Pgm 4 BACT 41	10/20/2015	1,884,793		MS 16E.14.2	
Grand Total						\$8,874,308			

Agency: G46 - MIN.IT Services

Budget FY: 2017

Fund Ctl	Trans Type	Journal Id	Approp Id	Name	Posted Date	Transfer Amt	Description	Legal Crs 1	Legal Crs 2
1000	Transfer Out	0002946932	6465000	State CO - MIN.IT Services	7/15/2016	74,700	Contribution to the Office of the Governor for Federal affairs work, Policy solutions, communications specialists, consultant services, and legal staff to represent and support state agencies. For fiscal year 2017 Per	15 077 01 010 000	
5500	Transfer Out	0003079166	6464602	MIN.IT Services Sd Services	8/18/2016	28,250	Per Interagency Agreement for Statewide Executive Recruiter to MMB	MS 16E.14.2	
5500	Transfer Out	0003093290	6464602	MIN.IT Services Sd Services	9/27/2016	110,500	Office of Enterprise Sustainability - transfer for management of sustainability efforts: coordinate, manage and oversee executive branch sustainability initiatives at an enterprise level.	MS 16E.14.2	
5500	Transfer Out	0003186157	6464602	MIN.IT Services Sd Services	11/29/2016	2,869,936	MS 16E.14.5.1 Master Lease - December 1, 2016 Billing - Per MMB Memo Ds 11/27/16 ML 14 P 1,286,999.35; In 15,248.84 - Total: 1,322,248.19 ML 15 P 1,288,225.36; In 48,127.71 - Total: 1,386,453.07 ML 16	MS 16E.14.2	
1000	Transfer In	0003002464	6467019	Admin eProcurement	8/4/2016	350,000		16 189 13 002 004	
1000	Transfer In	0003003777	6467006	OHE SW Long Education Data Sys	8/4/2016	555,000		16 189 13 002 004	
1000	Transfer In	0003141104	6467019	Admin eProcurement	10/25/2016	300,000		16 189 13 002 004	
1000	Transfer In	0003244413	6467018	Tax Court Case Mgt System	12/28/2016	700,169		15 085 01 006 00A	MS 16E.0466
1000	Transfer In	0003246897	6467018	Tax Court Case Mgt System	12/29/2016	35,800		15 085 01 006 00A	MS 16E.0466
2000	Transfer In	0002946874	6466004	Telecommunications Access MN	7/21/2016	72,500		151 000 01 008 005	
2000	Transfer In	0002956879	6466017	Telecommunications Access MN	10/17/2016	12,500		151 000 01 008 005	
2000	Transfer In	0003133700	6466017	Telecommunications Access MN	10/17/2016	72,500		151 000 01 008 005	
2000	Transfer In	0003003988	6466002	MIN.IT Services Sd Services	10/17/2016	17,500		MS 16E.14.2	
5500	Transfer In	0003003988	6464602	MIN.IT Services Sd Services	8/4/2016	10,542,140		MS 16E.14.2	
5500	Transfer In	0003003988	6464603	MIN.IT Services Applications	8/4/2016	16,942,722		MS 16E.14.2	
5500	Transfer In	0003003988	6464604	MIN.IT Services Projects	8/4/2016	5,271,089		MS 16E.14.2	
5500	Transfer In	0003003988	6464605	Dir. Of Ent Tech Pgm 4 BACT 41	8/4/2016	4,894,564		MS 16E.14.2	
Grand Total						96,877,878			

Unbalanced Transfers

Page 1

Print Date: 3/24/2017

MNIT Interagency

PAYING AGENCY MN.IT

Sum of AMOUNT	Column Labels					
Row Labels	2012	2013	2014	2015	2016	2017
ADMINISTRATION DEPT	\$ 3,305,050	\$ 3,316,104	\$ 3,124,470	\$ 2,765,662	\$ 2,768,289	\$ 1,396,810
ATTORNEY GENERAL	\$ 7,690	\$ 7,271	\$ 9,045	\$ 8,548	\$ 7,902	\$ 5,188
CORRECTIONS DEPT			\$ 31,380			
EDUCATION DEPARTMENT		\$ 71,820				
EMPLOYMENT & ECONOMIC DEVELOPMENT DEPT	\$ 282	\$ 336	\$ 721	\$ 1,118	\$ 3,148	\$ 203
HUMAN RIGHTS DEPARTMENT					\$ 90	\$ 105
HUMAN SERVICES DEPT	\$ 10,887	\$ 9,278	\$ 18,300		\$ 175	\$ 41,959
LEGISLATIVE COORDINATING COMMISSION				\$ 8,938		
MINNESOTA MANAGEMENT & BUDGET	\$ 1,476,205	\$ 511,641	\$ 1,150,279	\$ 416,255	\$ 473,636	\$ 438,103
MMB DEBT SERVICE		\$ 10,705				
MMB NON OPERATING	\$ 181,156		\$ 159,214	\$ 616,572	\$ 832,653	\$ 183,814
MN IT SERVICES	\$ 730,766	\$ 1,359,589	\$ 726,083	\$ 919,255	\$ 559,177	\$ 527,961
MNSURE						\$ 30,000
NATURAL RESOURCES DEPT			\$ 17,760	\$ 13,523	\$ 72,379	\$ 626
POLLUTION CONTROL AGENCY			\$ 1,779			
PUBLIC SAFETY DEPT	\$ 240,000	\$ 240,760	\$ 252,553	\$ 126,050	\$ 6,540	\$ 9,728
SECRETARY OF STATE		\$ 240		\$ 120		
TRANSPORTATION DEPT		\$ 19,167	\$ 19,544	\$ 39,667	\$ 28,000	\$ 28,000
Grand Total	\$ 5,952,036	\$ 5,546,909	\$ 5,511,127	\$ 4,915,708	\$ 4,751,989	\$ 2,662,496

RECEIVING AGENCY MN IT SERVICES

Sum of AMOUNT	Column Labels					
Row Labels	2012	2013	2014	2015	2016	2017
Accountancy Board	\$ 9,822	\$ 12,265	\$ 9,276	\$ 35,264	\$ 60,962	\$ 24,256
Administration Department	\$ 860,159	\$ 900,372	\$ 2,687,618	\$ 4,862,906	\$ 5,027,248	\$ 1,203,220
Administrative Hearings	\$ 243,145	\$ 306,661	\$ 372,467	\$ 459,464	\$ 477,592	\$ 187,651
Agriculture Department	\$ 365,246	\$ 458,354	\$ 4,008,061	\$ 4,219,465	\$ 4,863,630	\$ 1,225,212
Animal Health Board	\$ 21,885	\$ 31,210	\$ 395,746	\$ 563,539	\$ 729,029	\$ 193,474
Architecture, Engineering Bd	\$ 20,330	\$ 17,382	\$ 15,265	\$ 35,360	\$ 45,216	\$ 25,825
Arts Board	\$ 17,822	\$ 30,041	\$ 26,388	\$ 201,108	\$ 185,774	\$ 10,062
Asian Pacific Council	\$ 6,330	\$ 6,376	\$ 6,977	\$ 8,343	\$ 14,197	\$ 3,184
Attorney General	\$ 184,507	\$ 183,196	\$ 180,228	\$ 193,983	\$ 203,728	\$ 73,857
Barber Examiners Board	\$ 1,108	\$ 1,436	\$ 4,340	\$ 16,010	\$ 6,359	\$ 7,486
Behavioral Health & Therapy Bd	\$ 3,056	\$ 3,507	\$ 8,393	\$ 3,874	\$ 3,641	\$ 1,049
Board of Teaching						\$ 2,234
Campaign Finance Board	\$ 9,518	\$ 8,336	\$ 7,548	\$ 8,565	\$ 9,903	\$ 3,919
Capitol Area Architect	\$ 6,883	\$ 6,480	\$ 6,579	\$ 6,731	\$ 7,336	\$ 3,482
Chiropractic Examiners Board	\$ 1,877	\$ 3,083	\$ 3,367	\$ 32,389	\$ 4,738	\$ 1,838
Commerce Department	\$ 931,235	\$ 1,725,465	\$ 1,265,268	\$ 1,722,243	\$ 3,035,059	\$ 1,249,562
Corrections Department	\$ 1,815,101	\$ 2,064,500	\$ 9,395,432	\$ 11,663,279	\$ 14,023,543	\$ 4,479,624

MNIT Interagency

Cosmetologist Examiners Board	\$	5,290	\$	6,146	\$	10,416	\$	79,021	\$	120,922	\$	33,907
Council for Minnesotans of Afr	\$	5,646	\$	6,014	\$	8,838	\$	4,253	\$	5,253	\$	2,618
Court of Appeals	\$	3,188	\$	3,951	\$	3,516	\$	5,919	\$	4,239	\$	1,839
Dentistry Board	\$	16,276	\$	17,202	\$	26,083	\$	86,880	\$	18,740	\$	13,805
Dietetics & Nutrition Practice	\$	549	\$	298	\$	2,157	\$	1,579	\$	797	\$	154
Education Department	\$	391,268	\$	383,132	\$	488,897	\$	2,558,221	\$	8,045,510	\$	2,984,256
Emergency Medical Services Off	\$	14,425	\$	13,548	\$	33,324	\$	38,931	\$	41,938	\$	12,104
Employment & Economic Develop	\$	7,450,356	\$	7,207,437	\$	8,046,161	\$	12,359,988	\$	13,519,107	\$	12,368,601
Explore Minnesota Tourism	\$	41,427	\$	46,925	\$	48,310	\$	386,162	\$	505,708	\$	212,267
Gambling Control Board	\$	36,502	\$	51,349	\$	44,534	\$	47,122	\$	54,212	\$	17,162
Governors Office	\$	50,532	\$	52,988	\$	57,328	\$	59,722	\$	64,193	\$	31,311
Health Department	\$	1,350,000	\$	1,689,434	\$	1,696,667	\$	8,916,665	\$	19,712,547	\$	9,556,154
Housing Finance Agency	\$	244,623	\$	230,703	\$	159,121	\$	177,999	\$	243,015	\$	91,154
Human Rights Department	\$	85,162	\$	136,102	\$	292,938	\$	388,335	\$	361,157	\$	59,104
Human Services Department	\$	35,767,340	\$	36,644,041	\$	40,844,625	\$	39,634,146	\$	117,392,496	\$	41,135,036
Indian Affairs Council	\$	6,566	\$	6,677	\$	6,956	\$	7,702	\$	9,877	\$	3,416
Investment Board	\$	27,575	\$	26,950	\$	24,291	\$	31,664	\$	36,721	\$	14,757
Iron Range Resources	\$	134,395	\$	180,566	\$	151,333	\$	190,236	\$	156,441	\$	72,968
Judicial Standards Board	\$	4,027	\$	2,006	\$	3,953	\$	4,333	\$	2,851	\$	1,409
Labor and Industry Department	\$	345,833	\$	591,728	\$	3,622,074	\$	4,644,298	\$	3,514,995	\$	1,831,239
Legislative Auditor	\$	64,021	\$	65,017	\$	60,317	\$	69,158	\$	65,919	\$	27,910
Legislature Coordinating Comm	\$	20,512	\$	23,915	\$	18,253	\$	21,153	\$	109,250	\$	56,000
Lottery	\$	122,396	\$	229,243	\$	188,526	\$	201,781	\$	210,889	\$	91,854
Marriage and Family Therapy Bd	\$	1,127	\$	1,339	\$	4,187	\$	2,104	\$	1,944	\$	547
Mediation Services Department	\$	10,022	\$	48,950	\$	66,775	\$	220,061	\$	15,964	\$	57,042
Medical Practice Board	\$	11,069	\$	64,423	\$	182,581	\$	341,090	\$	307,692	\$	33,340
Military Affairs Department	\$	1,006,004	\$	979,718	\$	1,047,048	\$	1,059,078	\$	1,051,472	\$	583,521
Minn State Retirement System	\$	463,429	\$	626,398	\$	1,140,094	\$	1,557,719	\$	2,000,438	\$	572,112
Minnesota Council on Latino Af	\$	4,889	\$	6,212	\$	7,074	\$	5,545	\$	9,225	\$	3,427
Minnesota Management & Budget	\$	2,163,219	\$	2,114,316	\$	4,739,208	\$	13,908,198	\$	11,257,589	\$	7,762,649
Minnesota State Academies	\$	64,579	\$	70,354	\$	79,581	\$	302,545	\$	640,335	\$	283,798
MN Insurance Marketplace					\$	1,220,609	\$	6,729,991	\$	4,513,073		
MN State Colleges/Universities	\$	4,288,476	\$	4,584,365	\$	5,092,671	\$	5,102,264	\$	5,893,597	\$	2,359,626
MN State Council on Disability	\$	14,153	\$	13,774	\$	11,618	\$	16,352	\$	10,737	\$	3,511
MN.IT	\$	730,766	\$	1,359,589	\$	726,083	\$	919,255	\$	559,177	\$	527,961
Natural Resources Department	\$	1,939,421	\$	2,517,420	\$	2,896,083	\$	5,799,506	\$	7,155,060	\$	5,639,537
Nursing Board	\$	30,989	\$	32,861	\$	273,961	\$	430,493	\$	241,893	\$	99,806
Nursing Home Admin Board	\$	34,561	\$	22,013	\$	255,827	\$	359,864	\$	416,840	\$	166,480
Office of Higher Education	\$	71,072	\$	82,776	\$	87,718	\$	857,338	\$	776,593	\$	367,239
Office of State Auditor	\$	45,195	\$	39,233	\$	44,492	\$	40,964	\$	45,635	\$	18,617
Ombudsman MH/DD	\$	40,187	\$	57,027	\$	31,245	\$	167,997	\$	64,119	\$	69,450
Ombudsperson for Families	\$	14,710	\$	14,614	\$	13,555	\$	15,576	\$	15,656	\$	6,610
Optometry Board	\$	457	\$	423	\$	2,407	\$	427	\$	454	\$	150
Peace Officers Board (POST)	\$	8,603	\$	11,270	\$	11,195	\$	14,564	\$	12,486	\$	6,074
Perpich Ctr For Arts Education	\$	99,256	\$	71,577	\$	82,136	\$	265,114	\$	235,180	\$	193,061

MNIT Interagency

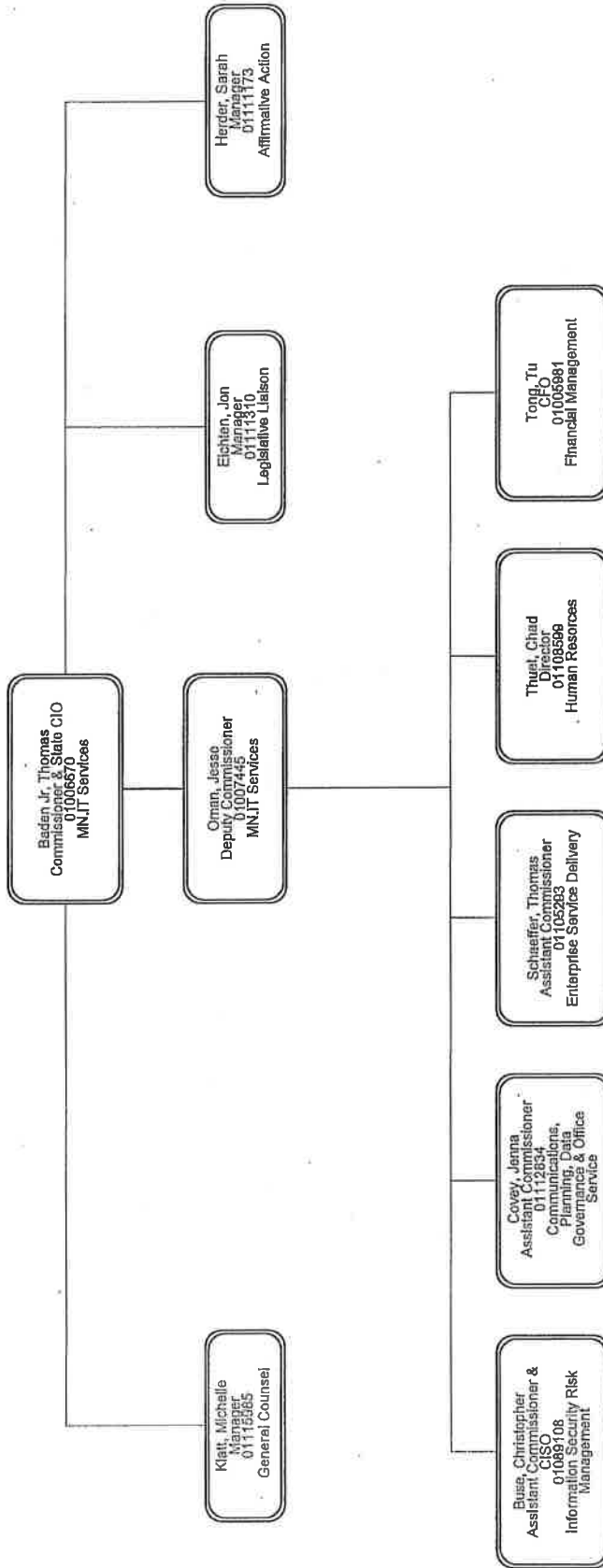
Pharmacy Board	\$	7,218	\$	9,225	\$	165,369	\$	240,664	\$	358,047	\$	186,965
Physical Therapy Board	\$	1,335	\$	8,036	\$	13,953	\$	20,532	\$	9,117	\$	5,113
Podiatric Medicine	\$	487	\$	677	\$	2,459	\$	840	\$	679	\$	203
Pollution Control Agency	\$	882,145	\$	1,247,512	\$	860,984	\$	3,735,949	\$	11,289,133	\$	5,362,268
Psychology Board	\$	3,706	\$	5,142	\$	3,448	\$	38,044	\$	13,195	\$	8,335
Public Defense Board	\$	348,767	\$	388,566	\$	399,524	\$	387,312	\$	348,336	\$	217,995
Public Employees Retire Assoc	\$	184,142	\$	174,013	\$	171,876	\$	178,155	\$	207,665	\$	48,890
Public Facilities Authority	\$	509	\$	170	\$		\$	279	\$		\$	
Public Safety Department	\$	6,110,013	\$	6,267,974	\$	8,237,546	\$	26,708,382	\$	26,633,169	\$	17,973,778
Public Utilities Commission	\$	92,296	\$	192,554	\$	170,961	\$	390,056	\$	492,964	\$	181,752
Racing Commission	\$	3,150	\$	4,247	\$	14,268	\$	97,203	\$	45,706	\$	9,728
Revenue Department	\$	1,778,098	\$	1,721,085	\$	19,830,057	\$	27,370,004	\$	21,653,027	\$	9,107,786
Secretary of State	\$	269,824	\$	284,830	\$	252,975	\$	299,888	\$	301,796	\$	144,116
Sentencing Guidelines Comm	\$	15,314	\$	16,574	\$	34,304	\$	39,183	\$	17,182	\$	11,046
Social Work Board	\$	6,365	\$	7,675	\$	95,325	\$	137,489	\$	122,983	\$	56,335
State Guardian Ad Litem	\$	858	\$	2,856	\$	5,446	\$	3,475	\$	9,207	\$	1,488
Supreme Court	\$	1,194,103	\$	1,157,030	\$	1,513,075	\$	1,644,492	\$	1,807,642	\$	1,106,474
Tax Court	\$		\$		\$	19,497	\$	10,999	\$	23,158	\$	16,189
Teachers Retirement Assoc	\$	102,825	\$	110,982	\$	97,376	\$	99,898	\$	153,818	\$	87,410
Transportation Department	\$	3,197,309	\$	5,567,751	\$	6,123,825	\$	17,068,248	\$	39,616,407	\$	11,222,257
Trial Courts	\$	88,261	\$	94,430	\$	90,643	\$	128,051	\$	104,555	\$	51,308
Veterans Affairs Department	\$	645,290	\$	1,110,348	\$	3,495,206	\$	2,794,326	\$	4,346,151	\$	2,748,268
Veterinary Medicine Board	\$	1,051	\$	1,333	\$	2,303	\$	9,094	\$	2,591	\$	2,034
Water and Soil Resources Board	\$	228,858	\$	262,565	\$	289,269	\$	723,372	\$	1,011,567	\$	424,828
Workers' Comp Court of Appeals	\$	16,025	\$	15,724	\$	18,314	\$	13,918	\$	15,052	\$	6,820
Zoological Board	\$	29,704	\$	46,672	\$	565,367	\$	746,370	\$	705,565	\$	478,021
Grand Total	\$	76,935,772	\$	84,790,659	\$	134,721,082	\$	214,950,059	\$	337,408,601	\$	145,528,922

Notes: The figures above represent revenue collected from partner agencies for IT services rendered. FY2017 represents amounts collected to date. Increasing trend (FY14 - FY17) reflects IT Financial Consolidation in phases. FY16 amounts do not include total IT spend from DHS/MNSure, DEED, DNR and DPS totalling roughly \$107 million. Totals above do not include revenue collected from other entities (cities, counties public schools etc) totalling roughly \$8 million. These are not traditional inter-agency agreements; rather they represent revenue collected for services rendered.

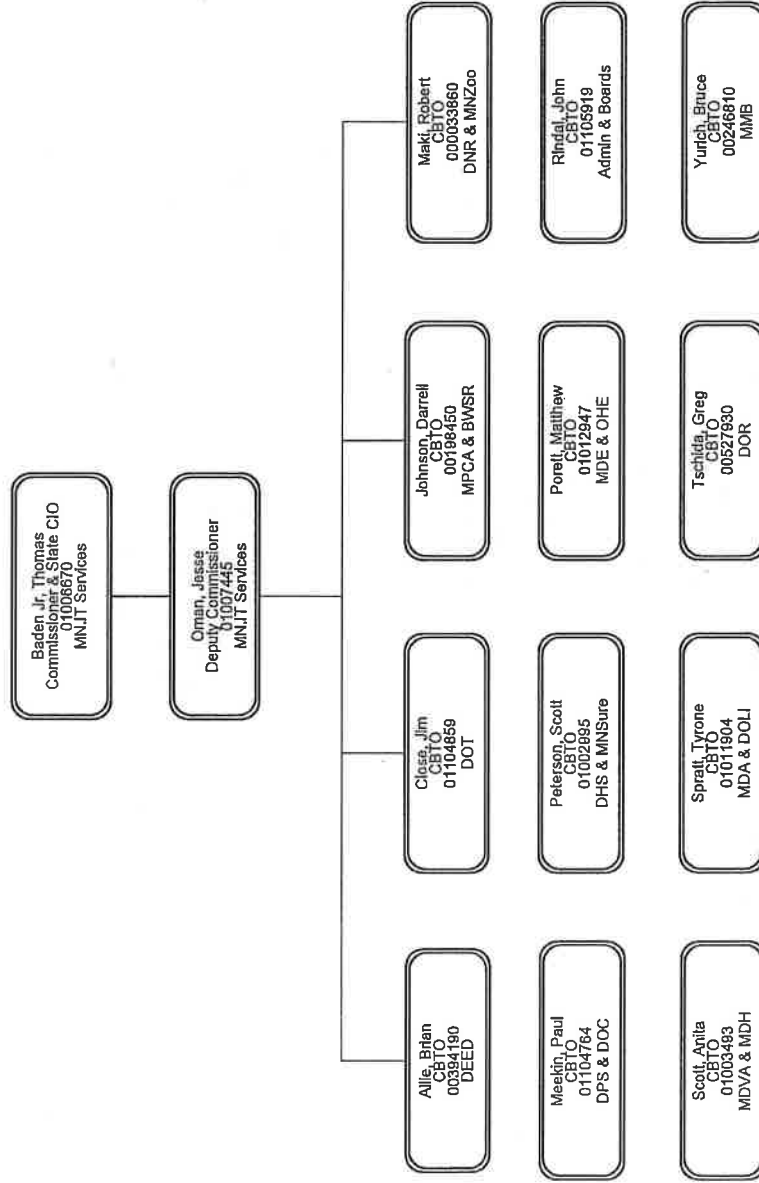
Enterprise – Executive Central Office

01/01/2017

1



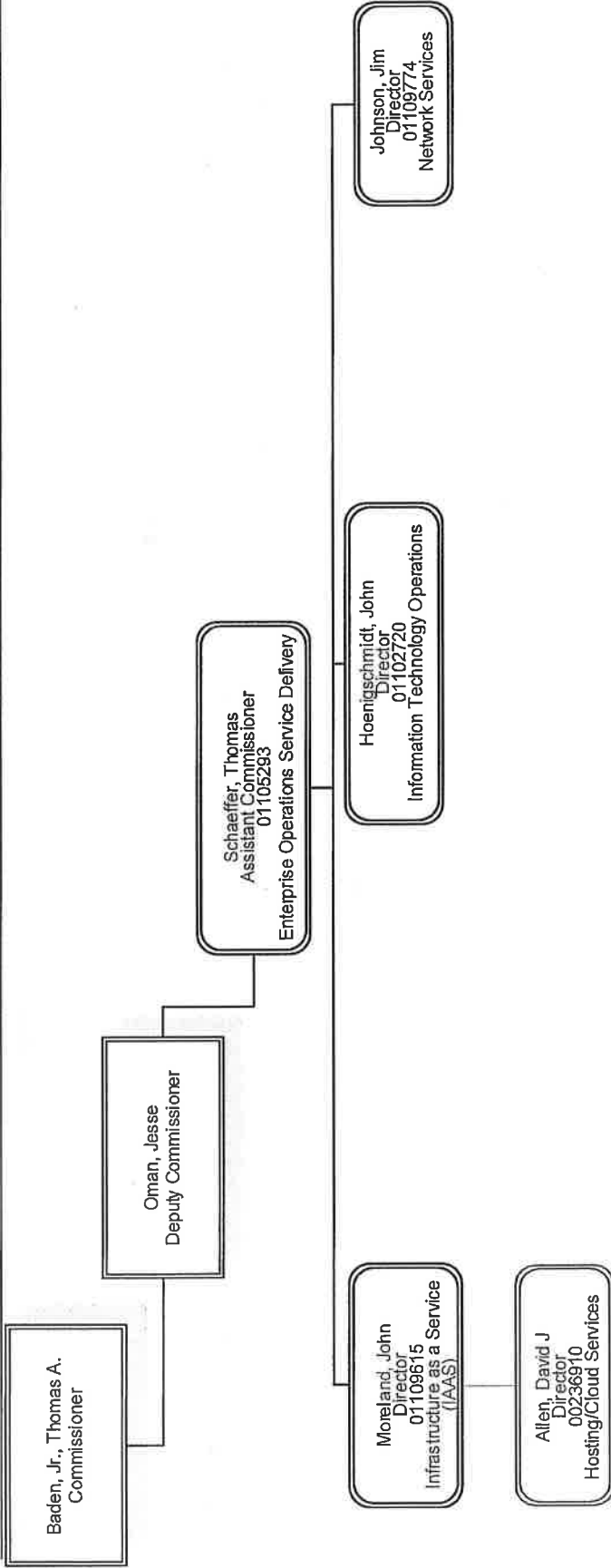
INFORMATION TECHNOLOGY FOR MINNESOTA GOVERNMENT



MNIT Central – Enterprise Operations Service Delivery

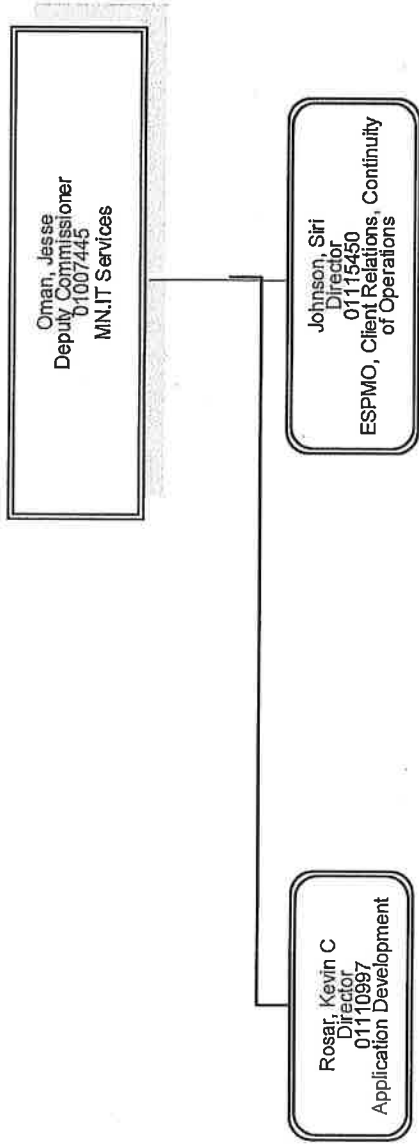
December 2016

1



Note: Each Department is expanded on the following pages





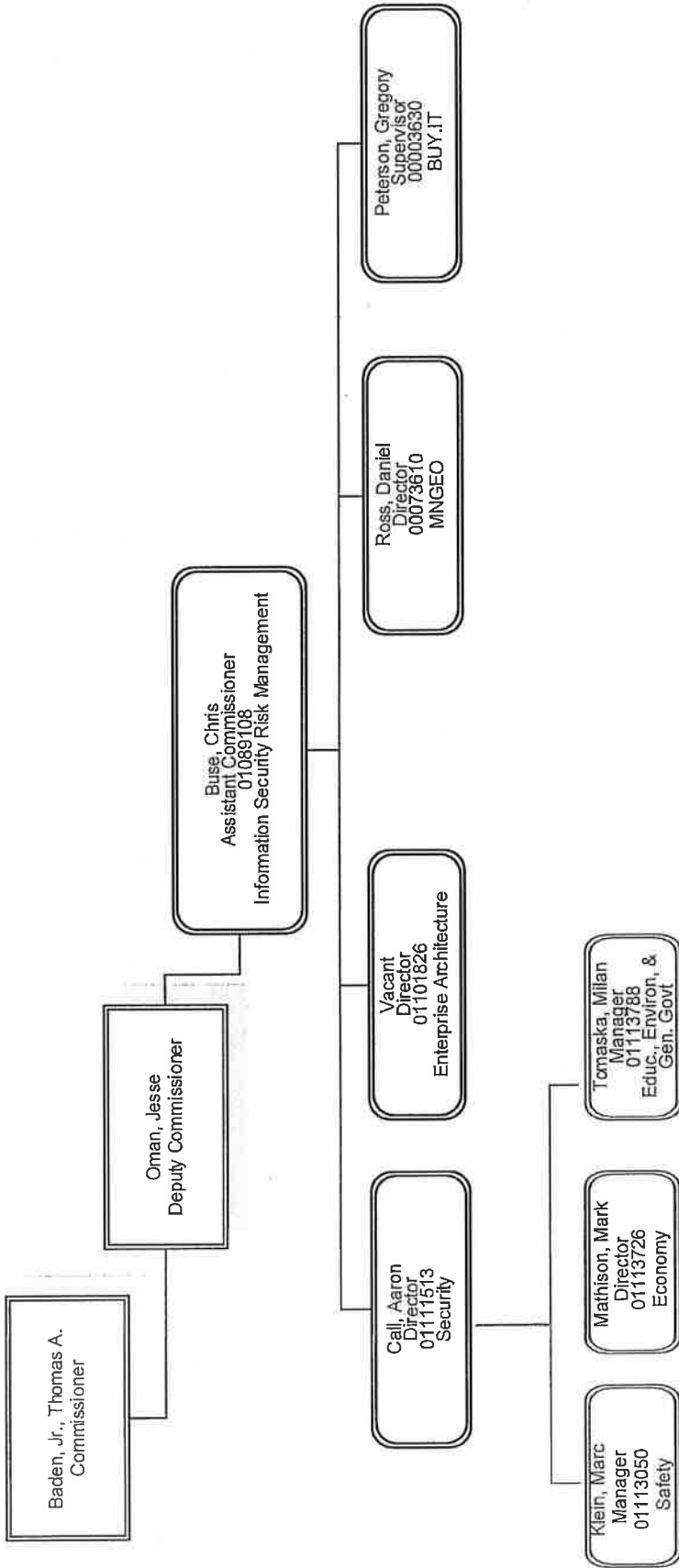
Note: Each Department is expanded on the following pages.



MN.IT – Information Security Risk Management

December 2016

1

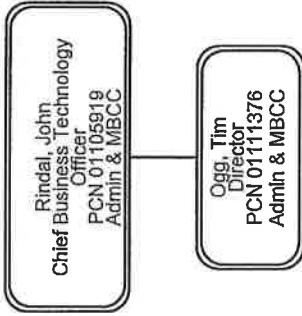


Note: Each Department is expanded on the following pages



Administration and MN Boards, Commissions & Courts (MBCC)

12/13/2016

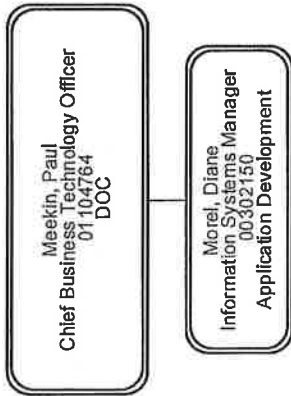


Porett, Matthew
Chief Business Technical Officer
01012947
Commerce, PUC, BOA, AELS

Hearley, Barb
Manager
1113708
Commerce, PUC, BOA, AELS

Corrections-Application Development

November 2016



Employment and Economic Development - Management

1
11/18/2016

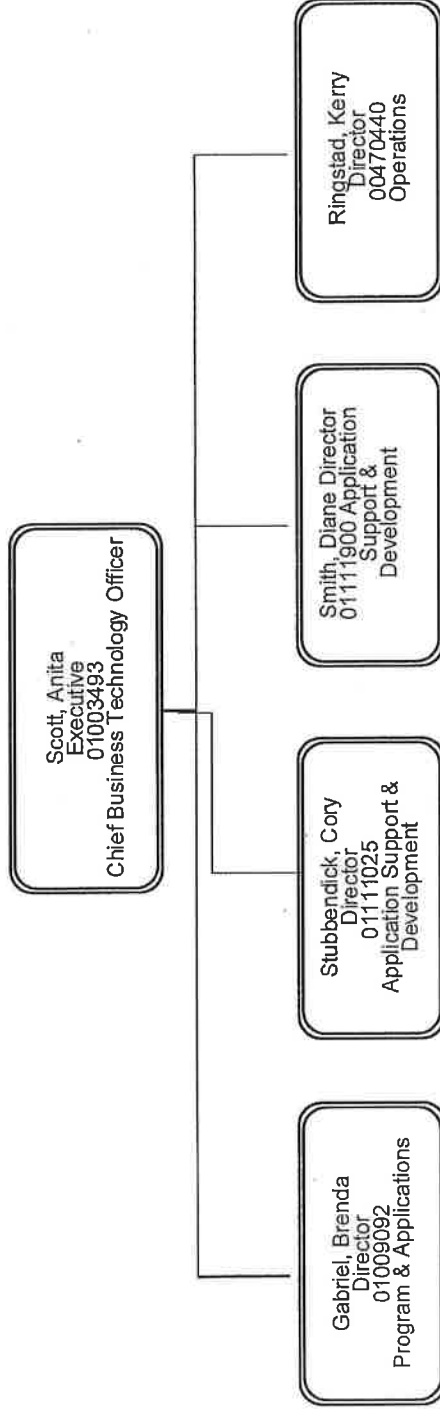
Allie, Brian
Chief Business Technology
Officer
00384190

Dorner, Debbie
Information Systems
Manager
01061946
Technology



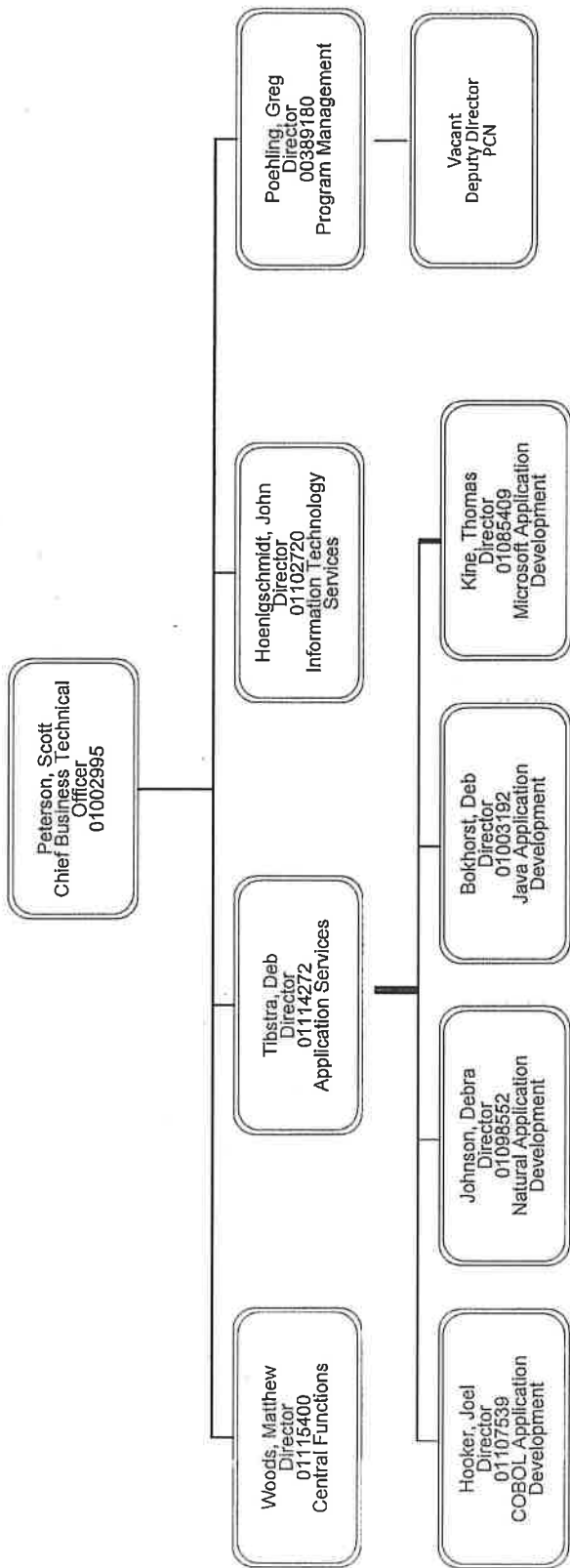
Porett, Matthew
Chief Business Technical Officer
1012947

Kauth, James
Director
1061235
IT Operations



Human Services – Office of the Chief Business Technical Officer

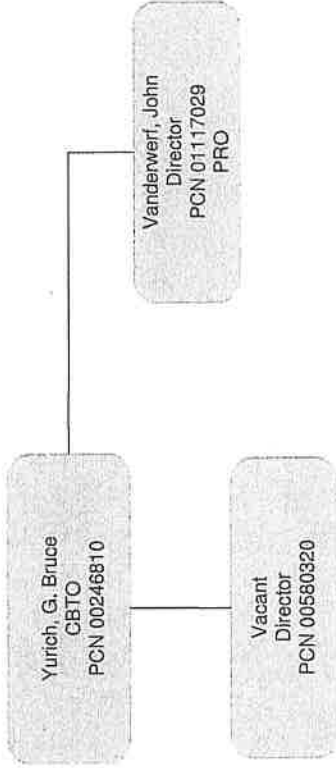
01/2017

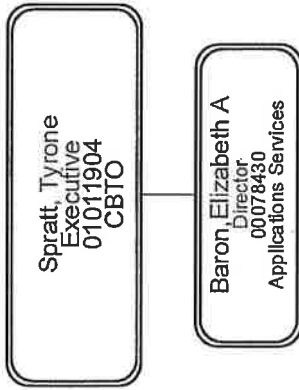


Minnesota Management & Budget – Management Team

10/28/2016

1





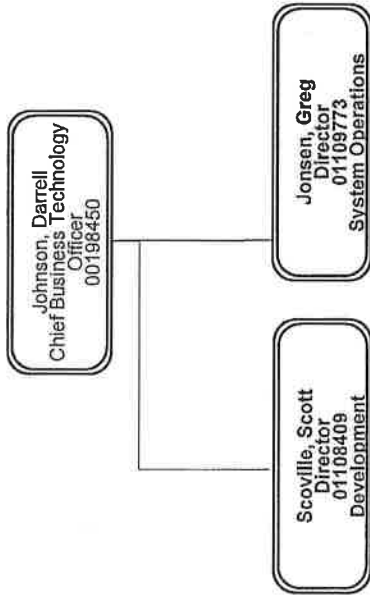
Natural Resources - Leadership

Date

1

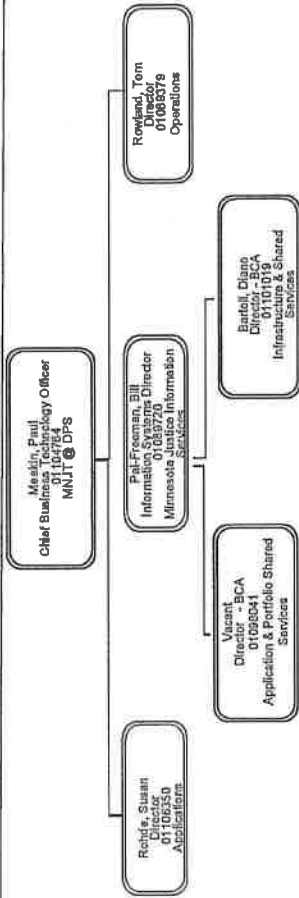
Robert Maik
Chief Business Technology
Officer
00033860

Timothy Loesch
Manager
00509010
Leadership

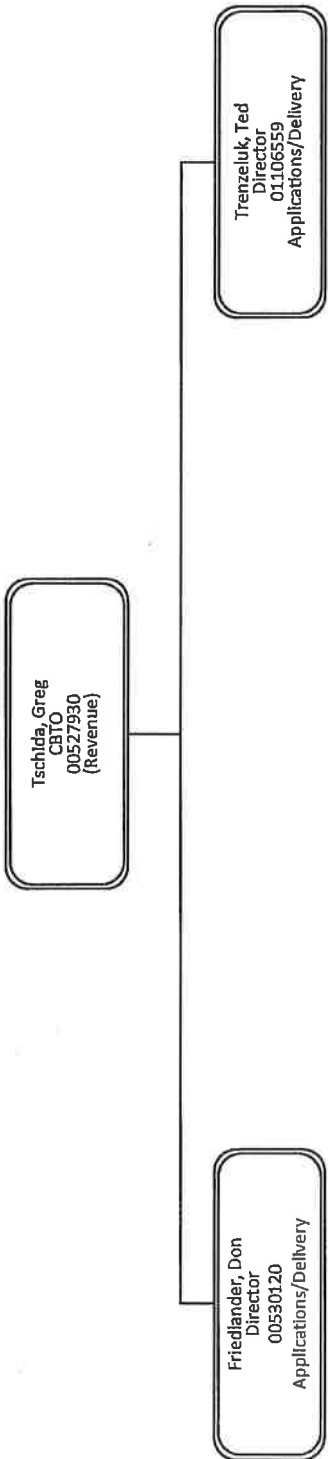


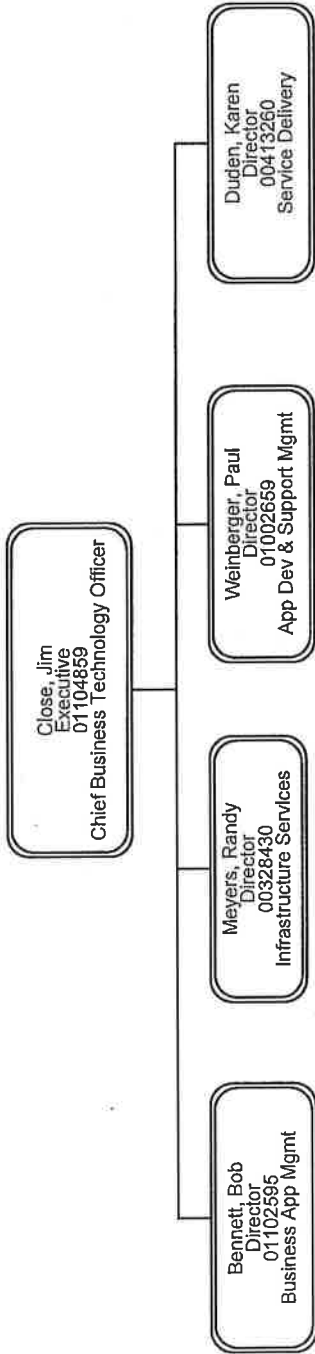
Public Safety

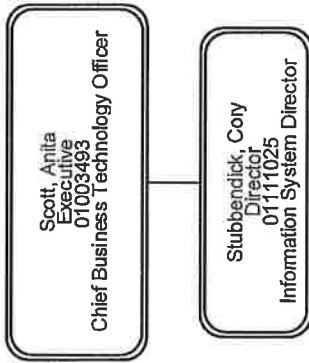
November 2016



INFORMATION TECHNOLOGY FOR MINNESOTA GOVERNMENT







Open or Pending Positions in Minnesota IT Services as of 1/17/17

Response to Letter E (2)

Currently Open	Working Title	Salary Range
Class		
Student Worker Para Professional	Financial Student Worker	13.87-16.25/hour
Student Worker Para Professional	Information Security Student Worker	13.87-16.25/hour
Student Worker Para Professional	Information Security Student Worker	13.87-16.25/hour
State Program Admin Principal	Enterprise License Coordinator	52,659-77,590
Information Technology Specialist 2	Customer Relationship Management Liaison	45,811-74,458
Information Technology Specialist 3	SCCM Administrator	54,225-89,137
Information Technology Specialist 3	IT Business Analyst	54,225-89,137
Information Technology Specialist 3	Web Application Developer	54,225-89,137
Information Technology Specialist 4	IT Advanced Business Analyst	60,218-99,347
Information Technology Specialist 4	IT Advanced Business Analyst	60,218-99,347
Information Technology Specialist 4	Lead Developer/Analyst	60,218-99,347
Information Technology Specialist 4	IT Advanced Project Manager	60,218-99,347
Information Technology Specialist 4	Sr. Java Analyst/Developer	60,218-99,347
Information Technology Specialist 4	PL/SQL Developer	60,218-99,347
Information Technology Specialist 4	Information Security Engineer	60,218-99,347
Information Technology Specialist 5	Senior Systems Administrator	64,540-110,372
Information Technology Specialist 5	Senior Software Developer	64,540-110,372
Information Technology Specialist 5	Sr. Identity Management Systems Admin	64,540-110,372
Systems Analysis Unit Supervisor	Application Portfolio and Support Supervisor	63,872-110,372
MN.IT Division Manager 2	Chief Enterprise Architect	98,387-140,856

In Progress	Working Title	Salary Range
Class		
Office & Administrative Specialist Sr.	Administrative Assistant	17.43-23.41/hour
Student Worker Paraprofessional	Student Worker	13.87-16.25/hour
Information Technology Specialist 1	Service Desk Request Fulfillment Analyst	41,468-62,264
Information Technology Specialist 1	Technical Service Liaison	41,468-62,264
Information Technology Specialist 1	Service Desk Analyst	41,468-62,264
Information Technology Specialist 1	Service Desk Analyst	41,468-62,264
Information Technology Specialist 1	Service Desk Agent	41,468-62,264
Information Technology Specialist 2	User Support Lead	45,811-74,458

Open or Pending Positions in Minnesota IT Services as of 1/17/17

Response to Letter E (2)

Class	Working Title	Salary Range
Information Technology Specialist 2	Service Desk Agent	45,811-74,458
Information Technology Specialist 2	Service Desk Analyst	45,811-74,458
Information Technology Specialist 2	Service Desk Technical Analyst	45,811-74,458
Information Technology Specialist 2	Information Technology Spec 2	45,811-74,458
Information Technology Specialist 2	SSIS Help Desk Specialist	45,811-74,458
Information Technology Specialist 2	Service Desk Incident Management Analyst	45,811-74,458
Information Technology Specialist 2	IT Business Analyst	45,811-74,458
Information Technology Specialist 2	Information Security Analyst	45,811-74,458
Information Technology Specialist 2	Service Desk Specialist	45,811-74,458
Information Technology Specialist 2	Application Security Analyst	45,811-74,458
Information Technology Specialist 3	Application Analyst	54,225-89,137
Information Technology Specialist 3	GenTax/Captiva Application Developer	54,225-89,137
Information Technology Specialist 3	QA Tester	54,225-89,137
Information Technology Specialist 3	Content Management Admin/Dev/Analyst	54,225-89,137
Information Technology Specialist 3	Project Electronic Form & Web Developer	54,225-89,137
Information Technology Specialist 3	Reporting Analyst	54,225-89,137
Information Technology Specialist 3	Reporting Analyst	54,225-89,137
Information Technology Specialist 3	Network Administrator	54,225-89,137
Information Technology Specialist 3	Technical Data Steward - GIS	54,225-89,137
Information Technology Specialist 3	Object Oriented Programmer	54,225-89,137
Information Technology Specialist 3	Database Administrator	54,225-89,137
Information Technology Specialist 3	IT Business Analyst	54,225-89,137
Information Technology Specialist 3	IT Business Analyst	54,225-89,137
Information Technology Specialist 3	IT Business Analyst	54,225-89,137
Information Technology Specialist 3	IT Business Analyst	54,225-89,137
Information Technology Specialist 3	IT Business Analyst	54,225-89,137
Information Technology Specialist 3	IT Business Analyst	54,225-89,137
Information Technology Specialist 3	IT Business Analyst	54,225-89,137
Information Technology Specialist 3	System Support Specialist	54,225 - 89,137
Information Technology Specialist 3	IT QA Analyst	54,225-89,137
Information Technology Specialist 3	High Productivity Platform Developer	54,225 - 89,137
Information Technology Specialist 3	IT Project Manager	54,225 - 89,137

Open or Pending Positions in Minnesota IT Services as of 1/17/17

Response to Letter E (2)

Class	Working Title	Salary Range
Information Technology Specialist 3	Unix System Administrator	54,225 - 89,137
Information Technology Specialist 3	Unix System Administrator	54,225 - 89,137
Information Technology Specialist 3	Network Support Technician	54,225 - 89,137
Information Technology Specialist 4	Software Developer	60,218-99,347
Information Technology Specialist 4	Software Developer	60,218-99,347
Information Technology Specialist 4	SQL Database Administrator	60,218-99,347
Information Technology Specialist 4	Application Developer	60,218-99,347
Information Technology Specialist 4	Applications Administrator	60,218-99,347
Information Technology Specialist 4	Mnsure/MN-ITS Integration Administrator	60,218-99,347
Information Technology Specialist 4	Mnsure/MN-ITS Integration Administrator	60,218-99,347
Information Technology Specialist 4	Mnsure/MN-ITS Integration Administrator	60,218-99,347
Information Technology Specialist 4	Mnsure/MN-ITS Integration Administrator	60,218-99,347
Information Technology Specialist 4	Access Management Programmer Analyst	60,218-99,347
Information Technology Specialist 4	Lead Reporting Analyst	60,218-99,347
Information Technology Specialist 4	Programmer Analyst Lead	60,218-99,347
Information Technology Specialist 4	Web Programmer	60,218-99,347
Information Technology Specialist 4	Advanced IT Business Analyst	60,218-99,347
Information Technology Specialist 4	IT Advanced QA Analyst	60,218-99,347
Information Technology Specialist 4	IT Release Coordinator	60,218-99,347
Information Technology Specialist 4	IT Advanced QA Analyst	60,218-99,347
Information Technology Specialist 4	IT Release Coordinator	60,218-99,347
Information Technology Specialist 4	IT Advanced Project Manager	60,218-99,347
Information Technology Specialist 4	IT Advanced QA Analyst	60,218-99,347
Information Technology Specialist 4	IT Advanced Business Analyst	60,218-99,347
Information Technology Specialist 4	Java Programmer	60,218 - 99,347
Information Technology Specialist 4	WPS/WTX Analyst Developer	60,218 - 99,347
Information Technology Specialist 4	Java Developer	60,218 - 99,347
Information Technology Specialist 4	IT Advanced Project Manager	60,218 - 99,347
Information Technology Specialist 4	Programmer/Analyst	60,218 - 99,347
Information Technology Specialist 4	Desktop Support Engineer	60,218 - 99,347
Information Technology Specialist 4	Data Center Network Specialist	60,218 - 99,347
Information Technology Specialist 4	Data Center Network Specialist	60,218 - 99,347

Open or Pending Positions in Minnesota IT Services as of 1/17/17

Response to Letter E (2)

Class	Working Title	Salary Range
Information Technology Specialist 4	Email & IM Administrator	60,218 - 99,347
Information Technology Specialist 5	System Administrator	64,540-110,372
Information Technology Specialist 5	Server Administrator	64,540-110,372
Information Technology Specialist 5	IT Senior Problem Manager	64,540-110,372
Information Technology Specialist 5	SEMA4 & ELM Application Developer	64,540-110,372
Information Technology Specialist 5	Modernization Project Manager	64,540-110,372
Information Technology Specialist 5	Lead Java /Drools Developer	64,500-110,372
Information Technology Specialist 5	WTX Analyst Developer	64,500-110,372
Information Technology Specialist 5	Solutions Architect	64,500-110,372
Information Technology Specialist 5	Lead Java Developer	64,500-110,372
Information Technology Specialist 5	Modernization Project Manager	64,540-110,372
Information Technology Specialist 5	Modernization Project Manager	64,540-110,372
Systems Architect	Solutions Architect	69,384-118,410
Systems Analysis Unit Supervisor	Supervisor QA/BA	63,872-110,372
MN.IT Division Manager 1	Program Mgmt Division Deputy Director	91,559-131,273

Sum of History FTE Agency ID	Year	2009	2010	2011	2012	2013	2014	2015	2016
G46	100	34.95	28.70	26.30	1.64				
	1000				20.52	33.58	15.86	26.92	15.86
	200		4.88	4.76	0.39				
	2000				5.52	6.29	3.43	4.81	6.58
	2001				4.91	6.28	9.08	11.03	26.71
	211			1.51	0.09				
	3000					-	0.41	0.03	
	5500	296.54	298.84	283.94	252.14	308.46	612.37	680.77	1,704.24
	6401	331.49	332.42	316.52	302.69	-		0.10	
G46 Total	970					354.61	641.14	723.65	1,753.39

Note - This schedule is run from SWIFT data and represents a calculated hour FTE based on a 2088/2080 per annum assumption. The counts above reflect the transfer of employee payroll costs from agency accounts to MNIT accounts. The 2016 counts above do not include FTEs for DEED, DNR and DPS, as they did not transfer to MN.IT accounts until FY17.

Minnesota IT Services FTE Summary

Response to Letter E (3)

Department	As of 10-01-2012 ¹	As of 07-01-2013	As of 07-01-2014	As of 07-01-2015	As of 07-01-2016	As of 01-12-2017
Admin	22	22	21	16	14	16.5
Agriculture	25.5	24.5	26.5	26.3	19.8	20.5
Commerce	18	20	14.25	12	14.8	14
Corrections	58.75	59	58	56	63	63.8
DEED	76	74	76	77	73	74
DHS	531.21	548.16	560.56	603.4	645.9	726.9

MN.IT Responses to Chairs Letters.xlsx

MNIT FTE by Fund

DNR	94.4	104.2	101.2	97.7	97.7	101.7
DOLI	23	24	23	20	18	18
DOT	191.25	193.67	189.75	188	202	196
Education	52.5	49.3	48.3	48.8	48	47.8
Health	142.7	141.2	140.83	127.8	124.6	117.6
MMB	65.48	67.01	66.41	60.9	52.4	52.1
MN.IT Central ²	340.36	371.33	366.18	395.9	419.8	430.3
OHE	4	5	4	4	4.5	5
PCA	57.9	64.52	70.72	63.5	68.9	68.3
Public Safety	130.75	132.75	131.75	126.7	125.3	125.3
Revenue	109.6	118.8	124.7	121.1	116.1	115
VA	10	12	17	17	21	20
Zoo	4.5	5	5	4	3	2
MN.IT Total	1957.9	2036.44	2045.15	2066.1	2131.8	2214.8

NOTES:

The figures shown above are a count from SEMA4 of the full-time equivalent (FTE) assigned to individual positions as of the dates listed above. These are FTEs as of the date indicated and do not include funded vacancies.

¹ This date corresponds to the date that IT employees were fully transferred to MN.IT.

² Beginning in 2014, MN.IT has been transferring staff from @agency departments to MN.IT Central to optimize enterprise delivery in WAN, LAN, telephony, hosting, service desk, workstation management and mobile device management. Departments impacted include Admin, Agriculture, Labor & Industry, Human Services, Health and MMB for a total of approx. 80 FTE transferred to MNIT Central

Sum of History FTE ¹	AFSCME Clerical	AFSCME Technical	Confidential	Insufficient Work Time	Managerial	MAPE	MMA	Grand Total
G46	21.38	32.65	57.50	1.20	63.35	1,400.24	177.06	1,753.39
Grand Total	21.38	32.65	57.50	1.20	63.35	1,400.24	177.06	1,753.39

Note - This schedule is run from SWIFT data and represents a calculated hour FTE based on a 2088/2080 per annum assumption, reflecting the hours worked in FY16. The counts above reflect FY16 actuals and do not include FTEs for DEED, DNR and DPS, as they did not transfer to MN.IT accounts until FY17.

Minnesota IT Services FTE Summary by Type

Response to Letter E(4)

Type	FTE as of 1-12-17	Notes
Deputy Commissioner	1	Working title is DC; however official class is Asst Commr, Office MN.IT Svcs
Assistant Commissioner	3	Working title is AC; however MNIT has only one official classification as AC as noted above
Managerial Plan	67.6	
MMA	206.8	
MAPE	1842.1	
AFSCME	57	This includes all employees covered by AFS, not just clerical staff
Commissioner's Plan	37.4	Was not requested but shown to correspond to total FTE in Minnesota IT Services
Totals	2214.9	

Type	FTE as of 1-12-17	Notes
Uncl or Temporary	227.7	Shown separately because it's a subset of the figures shown above.

NOTES:

The figures shown above are a count from SEMA4 of the full-time equivalent (FTE) assigned to individual positions as of the date noted and reflect the complete count of FTEs reporting to MN.IT Services.

MN.IT Services

Hourly Compensation Rate Deputy Commissioner, Jan. 2009-2017	2009	2010	2012	2013
---	------	------	------	------

NONE FOR MNIT- MNIT does not have anyone classified as a Deputy Commissioner

2014

2015

2016



MN.IT Services

Hourly Compensation Rate	2009	2010	2011	2012	2013	2014	2015	2016
Asst. Commissioner, Jan. 2009-2017								
Assistant Commissioner - Operations	58.62	57.47	57.47					
Assistant Commissioner - Client Services	58.62	57.47	57.47					
Assistant Commissioner - Working Title Deputy Commissioner	58.62	57.47	57.47	63.54	63.54	66.75	68.75	68.75

Note: As indicated above, MNIT currently has only 1 AC by classification with a working title of Deputy Commissioner

Average of Hourly Compensation Rate								
Managerial Plan, Jan. 2009-2017	2009	2010	2011	2012	2013	2014	2015	2016
Admin Mgmt Director 1					\$ 36.82			
Agency Chief Financial Officer	\$ 49.98			\$ 49.98	\$ 49.98	\$ 51.48	\$ 54.09	\$ 54.09
Chief Information Officer	\$ 58.59	\$ 58.03	\$ 58.03	\$ 58.59	\$ 54.84	\$ 60.13	\$ 64.61	\$ 66.17
Dir Administrative Info System					\$ 51.49	\$ 53.85	\$ 55.72	\$ 55.72
Dir Child & Family Services					\$ 49.98	\$ 50.86	\$ 54.09	
Exec Aide	\$ 32.59	\$ 32.59	\$ 32.59		\$ 30.18	\$ 32.66		\$ 27.95
Financial Mgt Director		\$ 49.98	\$ 49.98					
Fiscal & Admin Serv Manager	\$ 44.35	\$ 44.35	\$ 44.35	\$ 44.35	\$ 44.35			
Human Resources Director 2						\$ 40.80	\$ 43.75	
Human Resources Director 4					\$ 42.63	\$ 43.91	\$ 48.22	\$ 49.91
Information Mgmt Svcs Div Dir					\$ 50.33	\$ 54.44	\$ 55.72	\$ 55.72
Information Policy Res Dir	\$ 47.11	\$ 47.11						
Information Syst Applic Mgr	\$ 55.30	\$ 55.30	\$ 55.30	\$ 55.30	\$ 53.50	\$ 56.41	\$ 58.61	\$ 59.59
Information Syst Director					\$ 54.63	\$ 59.27	\$ 62.28	\$ 62.77
MN.IT Division Manager 1		\$ 53.41	\$ 49.74		\$ 52.57	\$ 55.73	\$ 59.15	\$ 58.80
MN.IT Division Manager 2	\$ 57.33	\$ 58.07	\$ 58.24	\$ 58.05	\$ 55.80	\$ 59.62	\$ 63.53	\$ 64.19
MN.IT Executive Manager					\$ 57.56	\$ 62.29	\$ 66.44	
MN.IT Network Oprns Mgr	\$ 51.49							
Planning Dir Statewide Info Po	\$ 50.28							
Proj Manager						\$ 40.84	\$ 44.85	\$ 46.42
State Chief Information Offcr	\$ 58.62	\$ 57.47	\$ 57.47	\$ 57.47	\$ 57.47	\$ 64.06	\$ 65.98	\$ 71.84
State Prog Admin Manager		\$ 35.92	\$ 35.92	\$ 37.36	\$ 40.43	\$ 39.16	\$ 39.73	\$ 36.95
State Prog Admin Manager Prin	\$ 49.88	\$ 49.88	\$ 49.88	\$ 49.88	\$ 49.88		\$ 52.07	\$ 52.22
State Prog Admin Manager Sr		\$ 34.16	\$ 34.16	\$ 31.13	\$ 40.44	\$ 42.56	\$ 44.44	\$ 44.21

¹ This is a report pulled from SEMA4 data.

Count by Job Class Managerial Plan, Jan. 2009-2017								
	2009	2010	2011	2012	2013***	2014	2015	2016
Admin Mgmt Director 1					1			
Agency Chief Financial Officer	1			1	1	1	1	1
Chief Information Officer*	1	2	2	1	14	14	13	13
Dir Administrative Info System					2	3	4	3
Dir Child & Family Services					1	1	1	
Exec Aide	1	1	1		1	1		1
Financial Mgt Director		1	1					
Fiscal & Admin Serv Manager	1	1	1	1	1			
Human Resources Director 2					1	1	1	
Human Resources Director 4					1	1	1	1
Information Mgmt Svcs Div Dir					5	5	3	2
Information Policy Res Dir	1	1						
Information Syst Applic Mgr	1	1	1	1	14	13	18	16
Information Syst Director					4	6	7	6
MN.IT Division Manager 1		2	1		4	9	9	12
MN.IT Division Manager 2	6	5	3	4	6	7	6	6
MN.IT Executive Manager					2	2	1	
MN.IT Network Oprns Mgr	1							
Planning Dir Statewide Info Po	1							
Proj Manager						1	1	1
State Chief Information Offcr**	1	1	1	1	1	1	1	1
State Prog Admin Manager		1	1	1	3	3	2	1
State Prog Admin Manager Prin	1	1	1	1	1		1	2
State Prog Admin Manager Sr		1	1	1	5	5	4	4
Grand Total	16	18	14	12	68	74	74	70

*Chief Information Officer classification has been eliminated effective 7/1/2016

** The State Chief Information Officer classification is the Commissioner of MNIT Services. In 2016, MNIT reorganized under the leadership of one State CIO

*** The increase in employees from 2012 to 2013 occurred because of the law that was passed requiring that all state agency employees whose work involves IT become employees of MN.IT. Prior, this would have been the count of just the old OET office, consistent managerial IT classification standards reducing the number of managerial

MNIT Department	Total Vehicles
Health	1
Central	4
Corrections	2
TOTAL	7

Minnesota IT Services

Response to Letter G (5)

G. Other Information – if applicable

5. Please detail any pending lawsuits against the agency or any lawsuits initiated by the agency, including union grievances.

MN.IT's Response

Minnesota IT Services does not have any pending lawsuits to report. The number of active union grievances totals 24. No further information is available until final disposition is reached.

