



WASHINGTON
CONSERVATION
DISTRICT

House Water Division

Overview of Soil and Water Conservation Districts



Metro SWCDs

February 4, 2019



WASHINGTON
CONSERVATION
DISTRICT



MASWCD

Minnesota Association of Soil and Water Conservation Districts



SHERBURNE
SOIL & WATER
CONSERVATION DISTRICT

1944



WRIGHT SOIL & WATER CONSERVATION DISTRICT

311 Brighton Avenue South, Suite C, Buffalo, MN 55119 | Phone: 763-882-1970 or 763-882-1833 (ext. 0) Fax: 763-882-0262 | Office Hours: Monday - Friday, 8:00 a.m. - 4:00 p.m.



SCOTT
SWCD





WASHINGTON
CONSERVATION
DISTRICT

Washington Conservation District Mission Statement

*To enhance, protect, and
preserve the natural
resources of Washington
County through
conservation projects,
technical guidance, and
educational services to
citizens and local
government*



Elected Board of Supervisors



**The WCD is a special purpose local unit of government dedicated to
the conservation of soil and water resources in Washington County
*Created in 1942***



What do Metro SWCDs Do?

Collaborate with Landowners and Other Local Units of Government

SWCD/Watershed Administration

Strategic and Watershed Planning

Prioritizing and Targeting Implementation

Water & Conservation Practices Monitoring

Education and Outreach

Urban & Rural Conservation Technical Assistance

Habitat Enhancement and Management

Land Protection

Conservation Practices Maintenance

Aquatic Invasive Species Prevention

Wetland Conservation Act



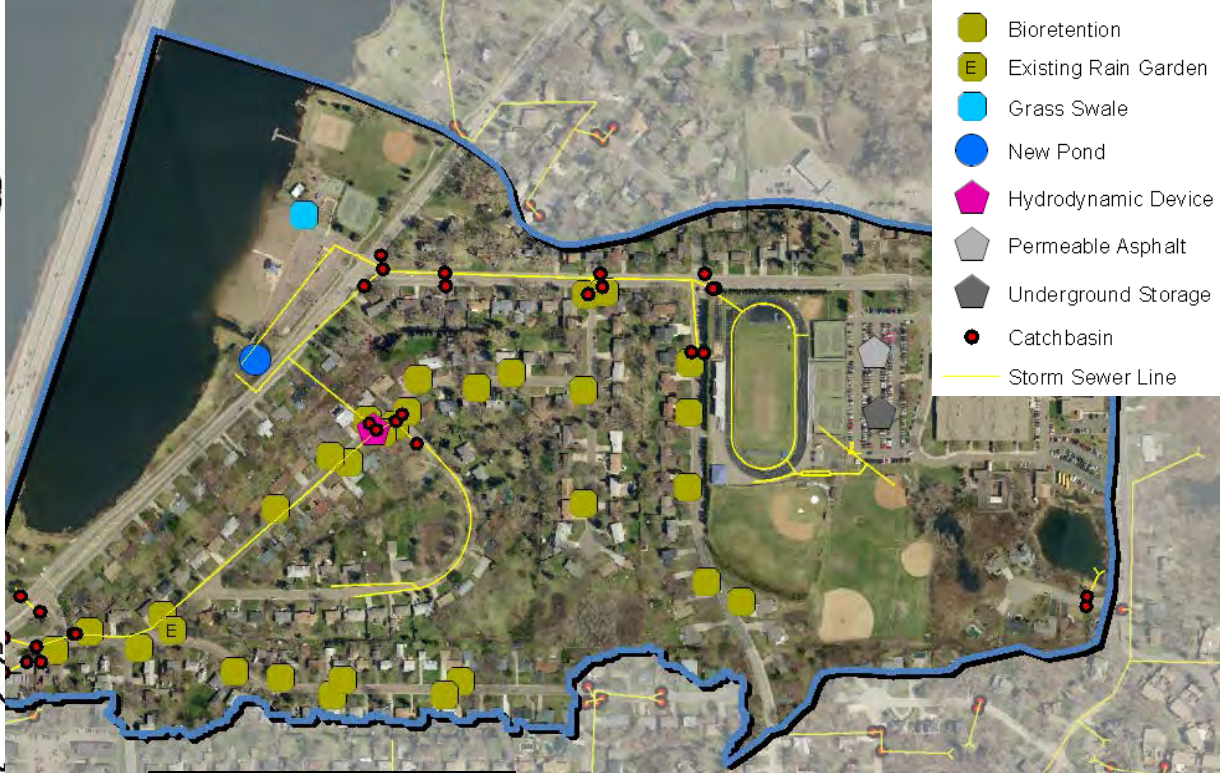
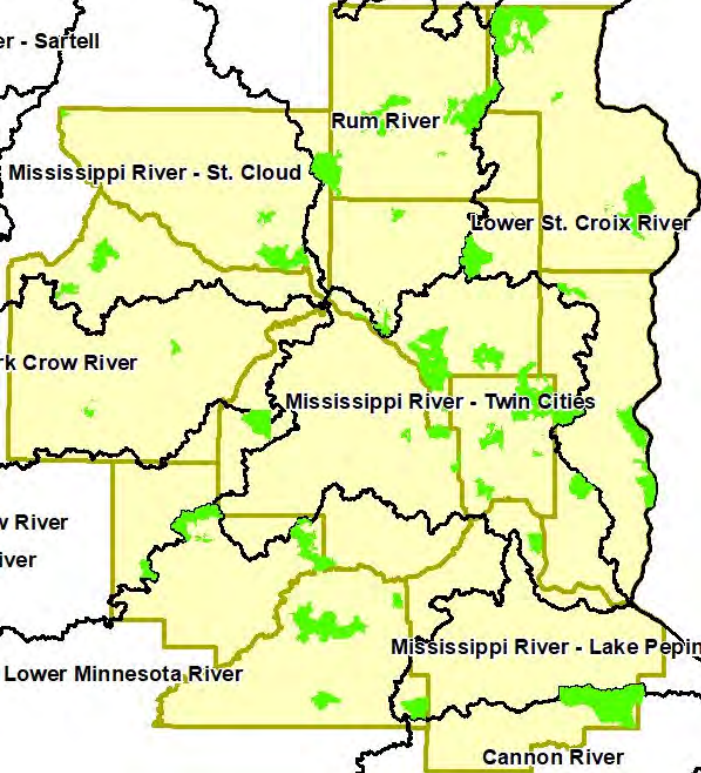
*Monitoring Lakes,
Streams, and
Stormwater*





*Conducting Science
– Tracking Water
Quality Trends*

9.90
9.80
9.70
9.60
9.50
9.40
9.30
9.20
9.10
9.00
8.90
8.80
8.70
8.60
8.50
8.40

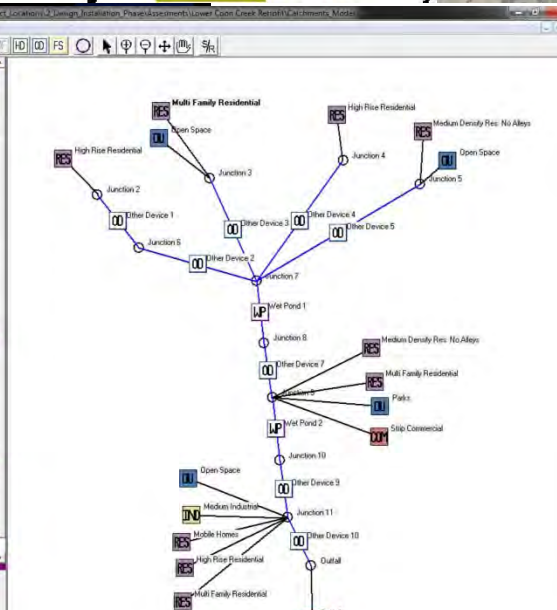


Screenshot of a software interface showing a data table for land use and control practices.

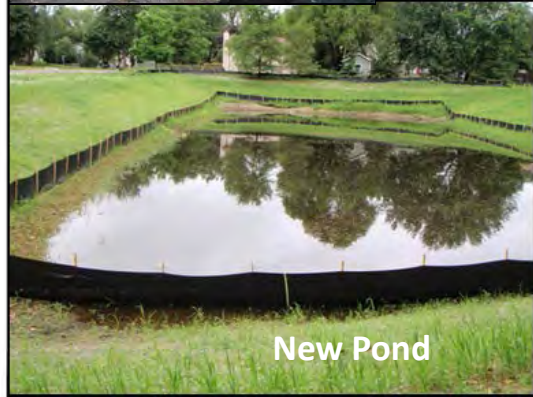
Source Area #	Source Area	Area (acres)	Source Area Parameters	First Control Practice	Second Control Practice
1	Roofs 1	2,872	Entered	-	-
2	Roofs 2	14,422	Entered	-	-
3	Roofs 3	1,998	Entered	-	-
4	Roofs 4	0,107	Entered	-	-
5	Roofs 5	0,267	Entered	-	-
7	Roofs 7	-	-	-	-
8	Roofs 8	-	-	-	-
9	Roofs 9	-	-	-	-
10	Roofs 10	-	-	-	-
11	Roofs 11	-	-	-	-
12	Roofs 12	-	-	-	-
13	Parking	1,567	Entered	-	-
14	Paved Parking 1	1,458	Entered	-	-
15	Paved Parking 2	-	-	-	-
16	Paved Parking 3	-	-	-	-
17	Paved Parking 4	-	-	-	-
18	Paved Parking 5	-	-	-	-
19	Unpaved Parking 1	0,063	Entered	-	-

Land Use #	Land Use Type	Land Use Label	Land Use Area (acres)
1	Residential	Medium Density Res: No Alloys	23,925
2	Other Urban	Open Space	12,519
3	Residential	High Rise Residential	1,500
4	Residential	Multi Family Residential	13,872
5	Other Urban	Open Space	3,000
6	Residential	High Rise Residential	8,800
7	Residential	Medium Density Res: No Alloys	85,983
8	Residential	Multi Family Residential	13,242
9	Other Urban	Open Space	1,872

CP #	Control Practice Type	Control Practice Name or Location
1	Other Device	Other Device 1
2	Other Device	Other Device 2
3	Other Device	Other Device 3
4	Other Device	Other Device 4
5	Other Device	Other Device 5
6	Other Device	Other Device 7
7	Other Device	Other Device 9
8	Other Device	Other Device 10
9	Other Device	Other Device 11



Prioritizing and Targeting Implementation





*Investigating
Conservation
Opportunities*



Water Resource Education Program

A partnership to protect and improve lakes, rivers, streams, wetlands & groundwater resources through education, outreach and engagement

EMWREP Partners:

Watershed Management Organizations

Brown's Creek

Carnelian-Marine-St. Croix

Comfort Lake - Forest Lake

Middle St. Croix

Ramsey-Washington Metro

Rice Creek

South Washington

Valley Branch

Cities

Cottage Grove

Forest Lake

Lake Elmo

Stillwater

Willernie

Dellwood

Grant

Newport

West Lakeland

Woodbury

Countywide Entities

Washington County

Washington Conservation District



Education Partnerships



*Monitoring
Streams with
High Schoolers*



*One-on-one Support
to Landowners*



*Workshops for
Urban
Landowners*



*Workshops for
Farmers*



Trainings for Elected Officials



Washington Conservation District & Washed Management Organizations

The Magic is
in the Roots!



Deep-rooted plants are the best option for native gardens, riparian areas & streambanks. Learn more at BlueThumb.org

Which plant has the longest roots?



*Shared Booth at
the Fair*



Education for Future Landowners



*Collaborating with
Private Sector*

Working with Contractors



*Working with Farmers to
Protect the St. Croix River and
other Valuable Resources*





*Learning from
Innovative Producers*

*Building innovative
stormwater management
practices*



*Building innovative
stormwater management
practices*



*Building LARGE innovative
stormwater management
practices*



**CLEAN
WATER
LAND &
LEGACY
AMENDMENT**



*Installing
shoreline
stabilization*



*Big River
Stabilization*

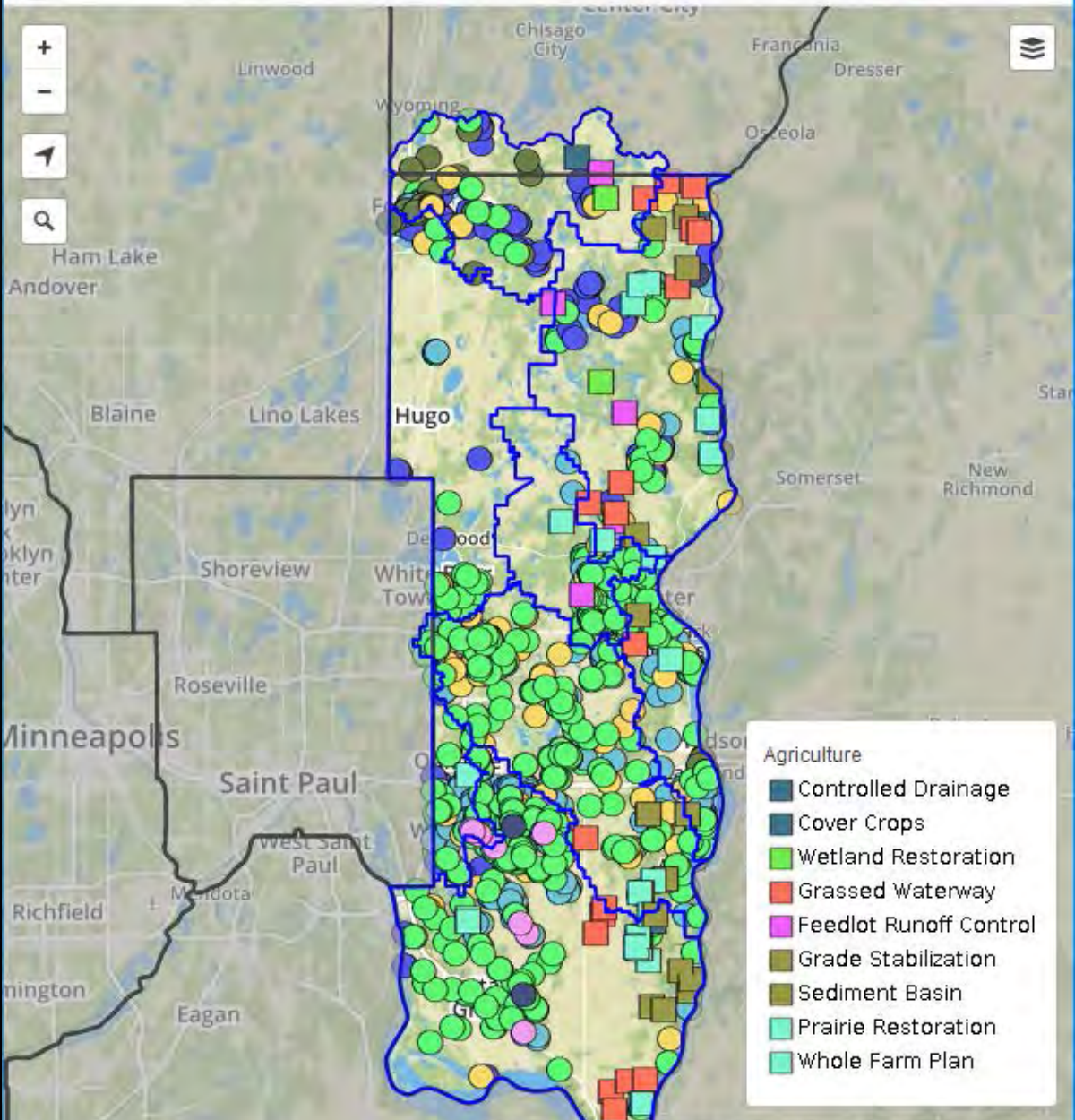




*Restoring and
Managing Habitat*



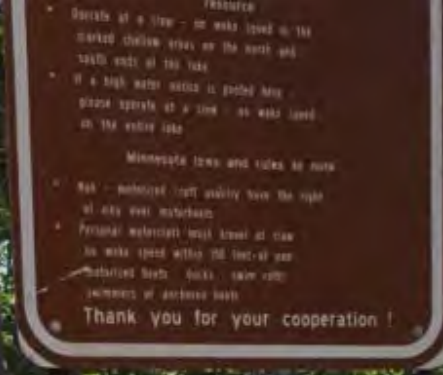
*Habitat
Management &
Mutually
Beneficial
Collaborations*




Tracking and Maintaining Conservation Practices

Help & Support

Preventing the spread of Aquatic Invasive Species





*Protecting
High Quality
Wetlands*



*Working with
Diverse Audience*

Creating Beautiful Projects



raingarden
A Rain Garden
Catches Pollinants
Reduces Stormwater
Protects Streams, Wetlands and Lakes

In Urban and Rural Landscapes



A photograph of a sunset over a large body of water. The sun is low on the horizon, partially obscured by thin clouds, creating a bright orange and yellow glow. The sun's light reflects off the water's surface, forming a shimmering path. The sky transitions from a pale blue at the top to a soft orange near the horizon. In the distance, a dark silhouette of a tree line is visible against the horizon. A small boat is visible on the right side of the water. A light green rectangular box is overlaid on the bottom center of the image, containing the text.

*To Protect our
Cherished Natural
Resources*

Questions?

