



January 19, 2023

Minnesota State Budget

House Higher Education Finance and Policy Committee

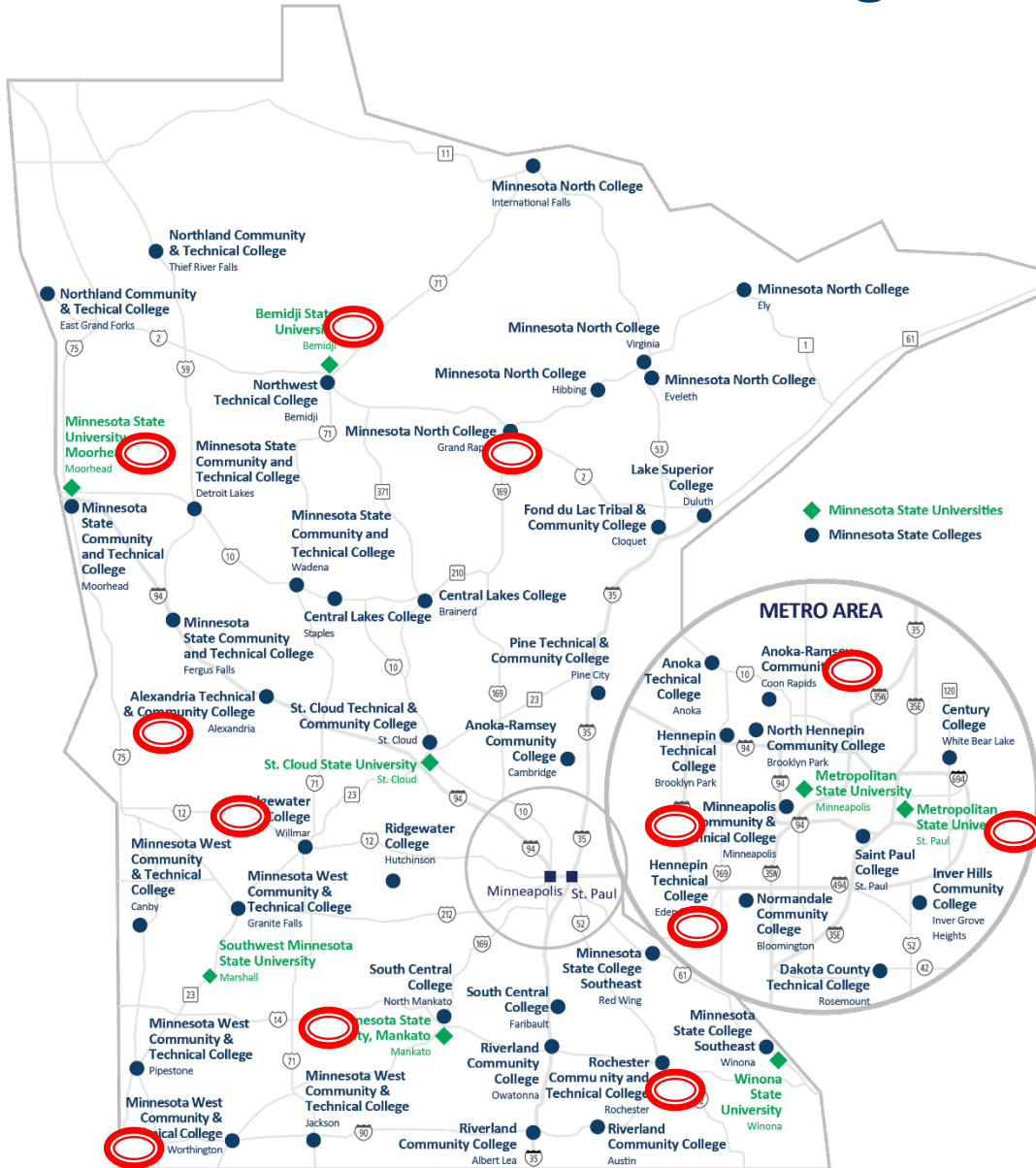
Internal Stakeholder

College, university, and statewide input and feedback

- Chancellor's meetings with statewide college and university student associations
- Statewide bargaining units meet and confers
- Chancellor's cabinet members meetings with bargaining units
- Leadership Council
- President's conversations with students, faculty, staff
- Listening sessions
- College and university shared governance meetings
- College and university student government meetings
- College and university surveys



Minnesota State Biennial Budget Listening Sessions



September 2022

By The Numbers:

- 12 listening sessions
- 550+ attendees

Summary of Major Themes

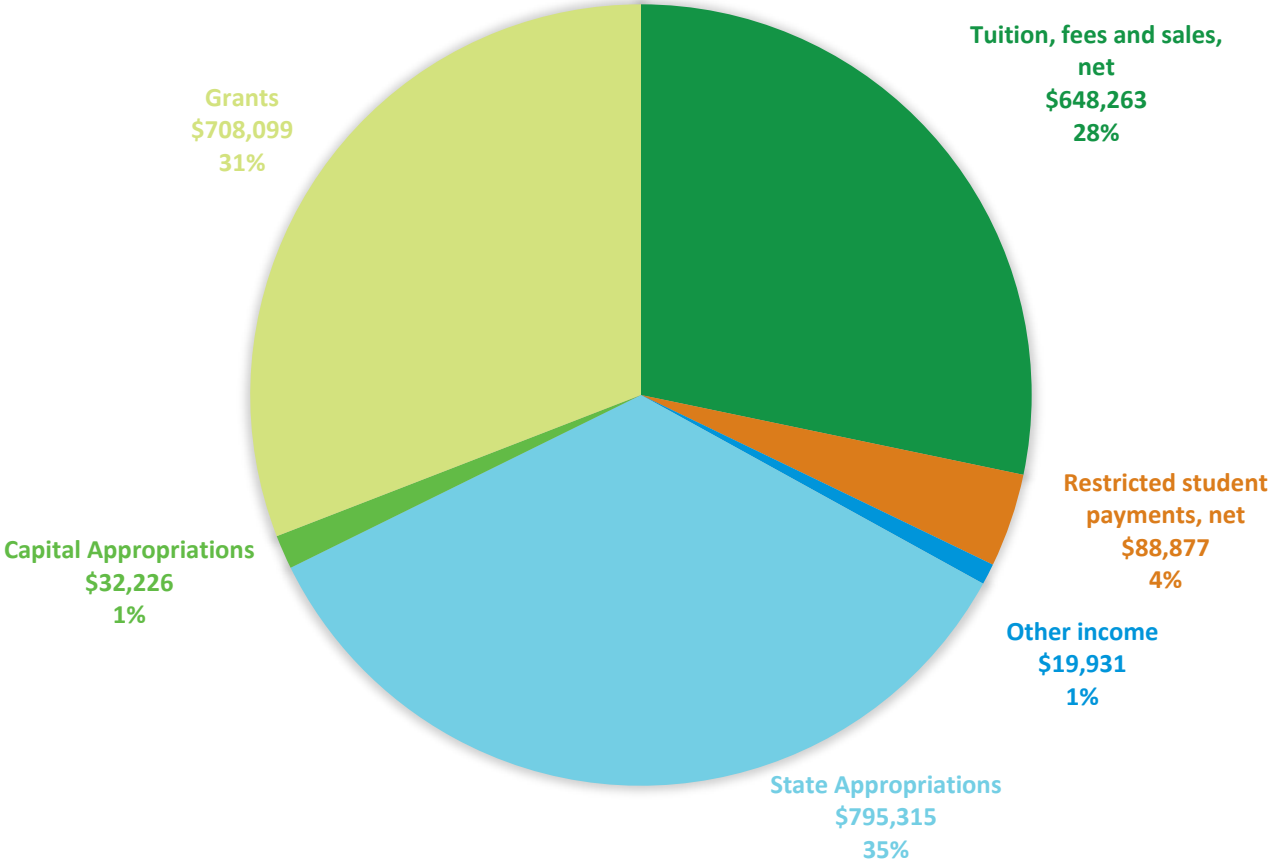
- The request may not be large enough for inflation and competitive compensation.
- Base funding is crucial to maintain strength in classroom and non-classroom resources; “stabilization” may not fully capture the significance of this need.
- Financial support for students, including scholarships, wages, and emergency grants is necessary for students to be able to afford higher education.
- Student services are essential to student success and completion.

Minnesota State Proposed FY2024-FY2025 Biennial Budget Request

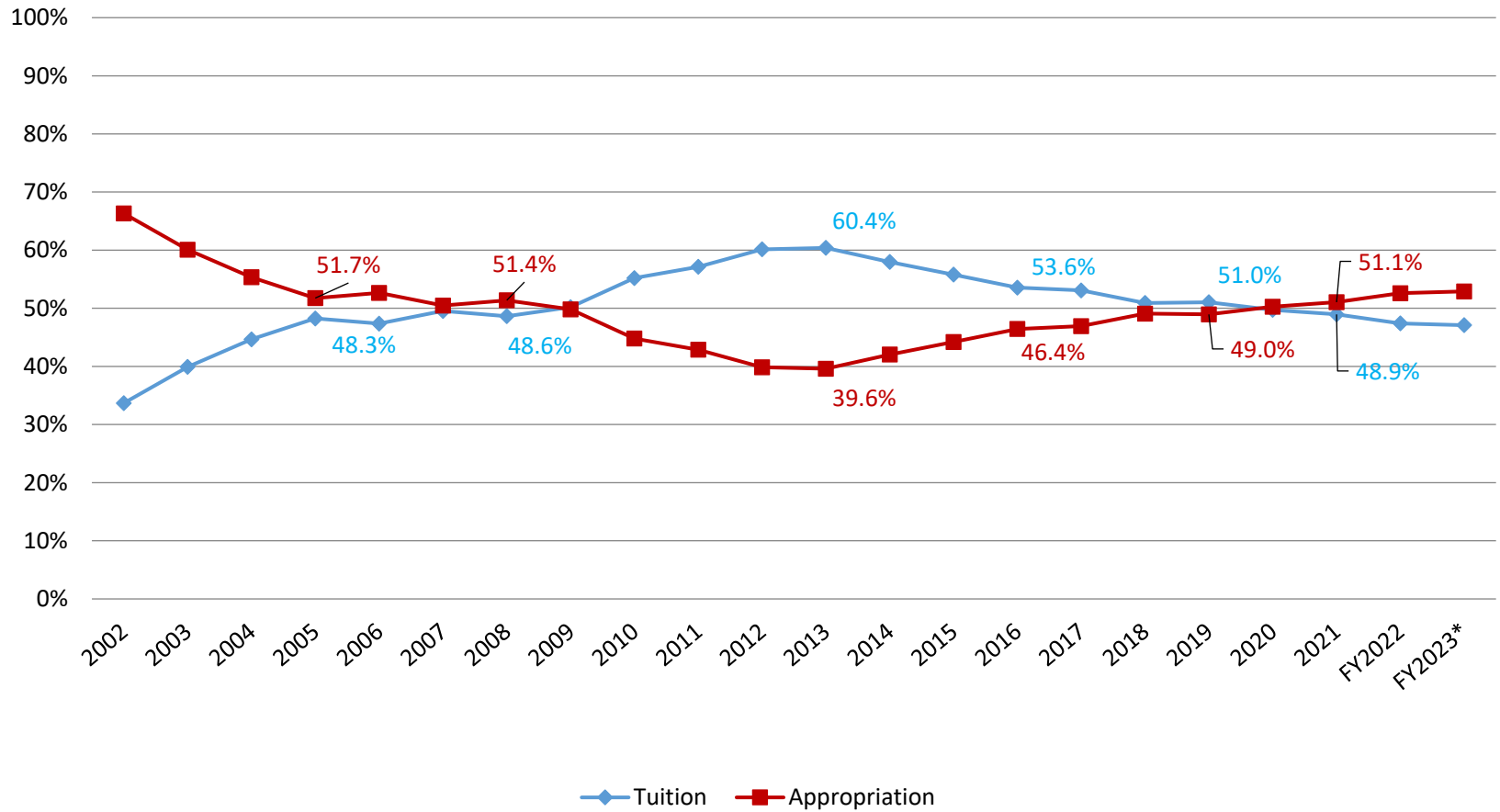
	FY2024	FY2025	Biennium
Student Support	\$50	\$75	\$125
Minnesota State Stabilization	\$40	\$85	\$125
Workforce & Economic Development	\$50	\$50	\$100
Total	\$140	\$210	\$350

(dollars in millions)

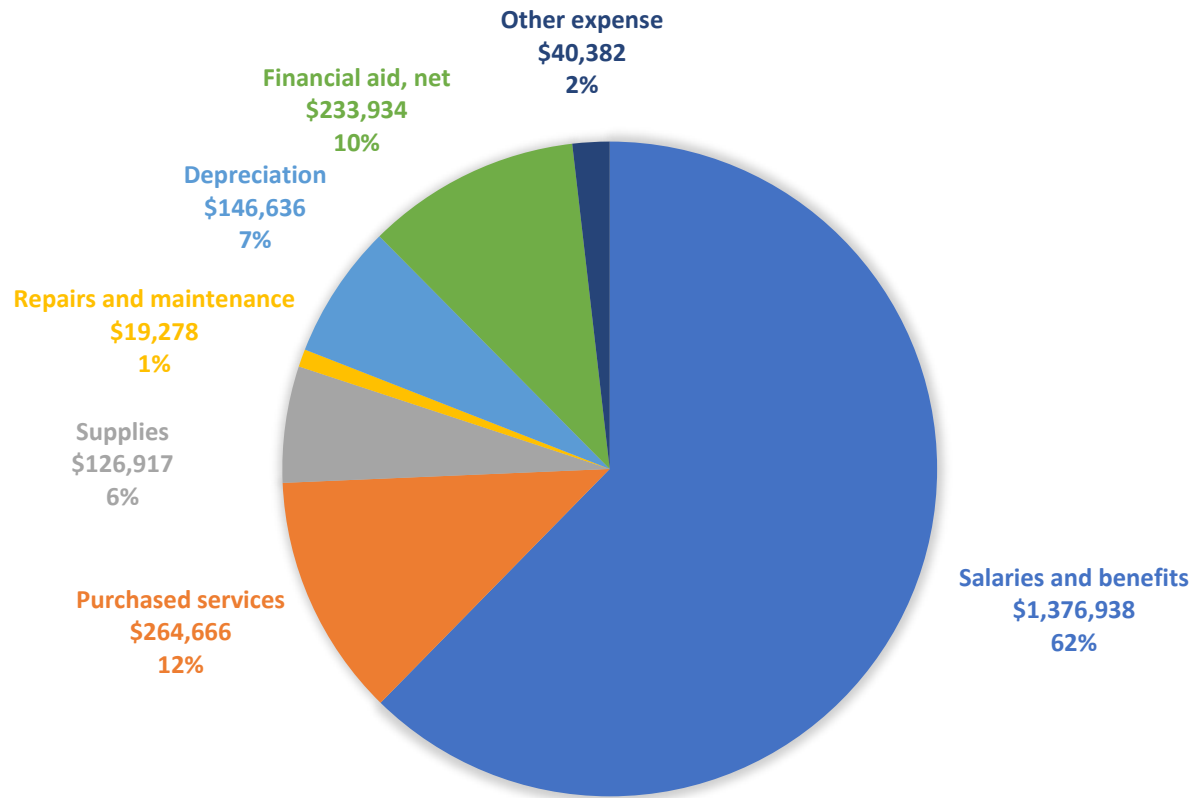
FISCAL YEAR 2022 REVENUES BY SOURCE (In Thousands)



Appropriation and Tuition Relationship

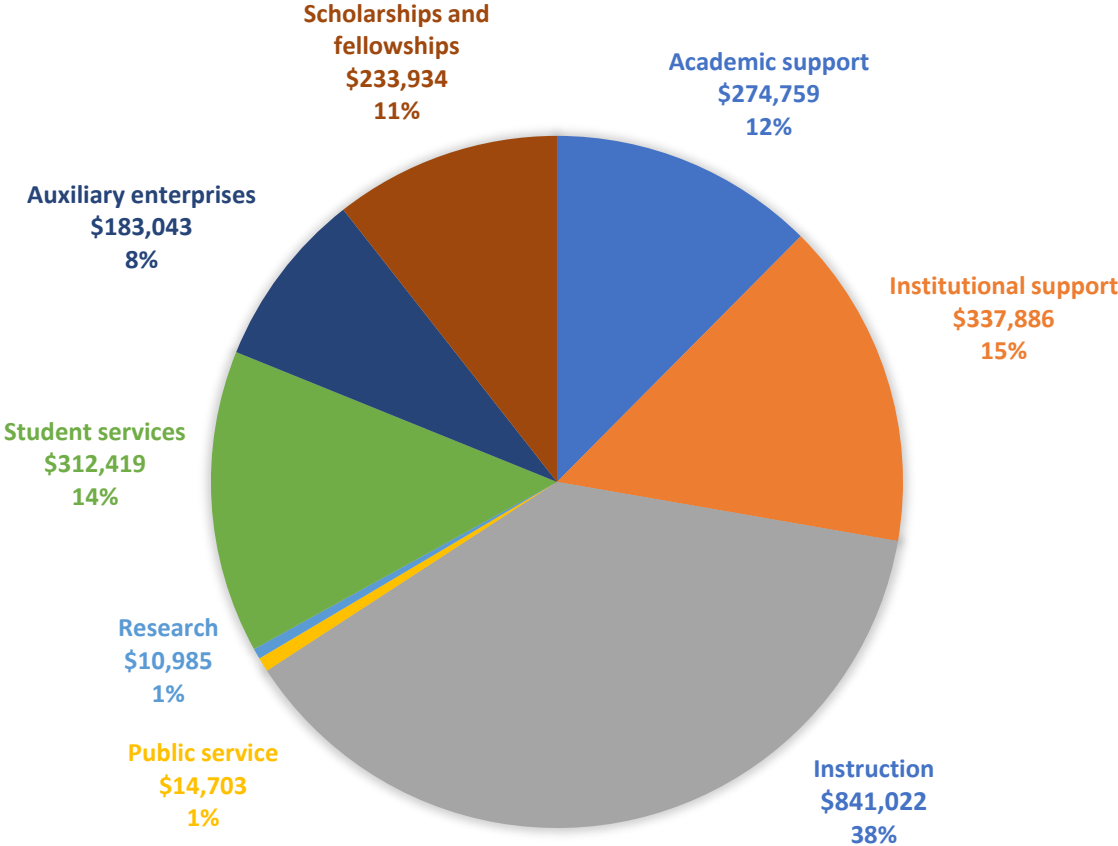


FISCAL YEAR 2022 OPERATING EXPENSES BY NATURAL CLASSIFICATION (In Thousands)



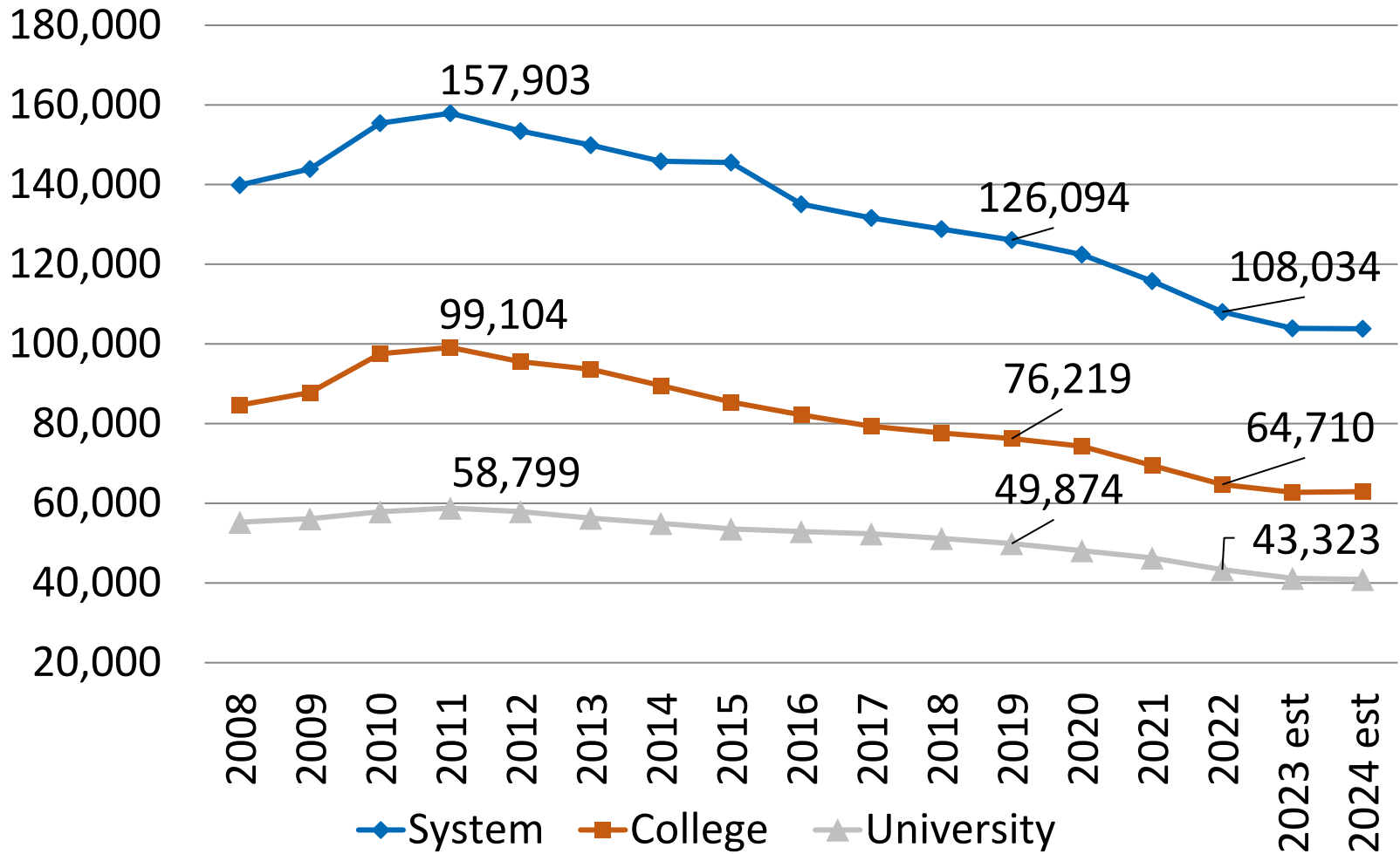
Excludes the impact of GASB Statements No. 68 and No. 75

FISCAL YEAR 2022 OPERATING EXPENSES BY FUNCTIONAL CLASSIFICATION (In Thousands)



Excludes the impact of GASB Statements No. 68 and No. 75

Historical & Projected Enrollment for the System



Systemwide Funding Stabilization

Continuing Operations

\$125 million

- \$40 million in FY2024 and \$85 million in FY2025
- Increases direct funding to campuses by approximately \$38 million in FY2024 and \$81 million in FY2025 to provide exceptional education and ensure availability of programs and services that students need on a daily basis
- Increases funding for systemwide technology and system office operations by approximately \$2 million in FY2024 and \$4 million in FY2025 for inflationary funding to support enterprise-wide activities



Student Support

Tuition Freeze, Affordability

\$77 million

- Consistent with past legislated limitations on undergraduate tuition, would be in-lieu of 3.5 percent increase each year
- Would save students \$25 million in FY2024 and \$50 million in FY2025
- Expanded offerings of free Open Educational Resources (OERs) and Z-degrees (complete degrees that use no-cost course resources) would save students additional out of pocket costs



Student Support

Student Support Services

\$26 million

- Funding direct to campuses, customized for local needs with local and systemwide data assessment to guide responsiveness and improvement
- Student support services such as
Advisors Transfer specialists Social workers
Community resource connectors Mental health support staff
Basic needs coordinators, etc.
- Basic needs access via support for 24/7 phone, text, and online hub connecting students with campus and community resources
- Mental health support including 24/7 access to
Peer mental health resource platform
Professional clinical support platform including telepsychiatry
Mental health education for students, faculty and staff,
including bystander intervention training



Student Support

Transfer Scholarships

\$12 million

- Scholarships for students who transfer from a Minnesota State College to a Minnesota State university completing one of two transfer options to further their education
- Transfer Pathways scholarships for 26 associate degree transfer pathway programs, which guarantee that associate degree credits will count towards a bachelor's degree
- Transfer Guarantee scholarships for students completing an A.A., A.S. or A.F.A. degree, guaranteeing admission to a Minnesota State University



Student Support Emergency Grants \$10 million

- Locally customized, promptly awarded funds to help with unforeseen emergencies
- Entire process available on mobile app that is administratively streamlined, easy to use, and focused on need and equity in decision making
- Provides crucial support where student vulnerabilities can delay or derail academic and career progress

Workforce and Economic Development Equipment and Learning Environments \$49 million

- Strategically directed funding for program modernization
- Enhancing equipment, technologies or learning environments, such as: labs for applied research, data visualization spaces, simulation labs, and spaces for collaboration
- Funding matched one-to-one with non-state funds in-kind or cash

Workforce and Economic Development Workforce Development Scholarships

\$25.5 million (current funding at \$4.5 million per year)

- Funding directly to colleges and universities to award to students, awards of \$2,500 that currently exists at colleges and \$3,500 at universities
- Expanding eligibility to state university students, increasing award maximum to \$3,500 in recognition of difference in tuition and fees
- Adding three new degree fields for scholarship eligibility: construction, education, and law enforcement and public safety
- Adding select credit and non-credit certificates and short-term stackable credentials
- Funding matched one-to-one with non-state funds in-kind or cash



Workforce and Economic Development Industry Sector Programming \$25.5 million

- Develop programs in high-demand areas experiencing extraordinary changes in occupational skills due to technological changes
- Create multiple-entry stackable credential career pathways to enable students to further their education, secure employment and advance
- Add Centers of Excellence for:
 - Public Safety (peace officers, first responders, firefighting)*
 - Construction/Building Trades*
- Funding matched one-to-one with non-state funds in-kind or cash

