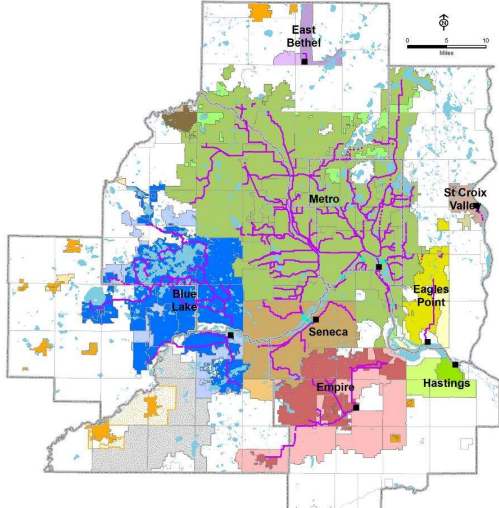





MCES Wastewater System




 Protects public health and safety


 Protects the environment


 Fosters the economic growth of the region

WHO WE SERVE

7-county Twin Cities Metro Area
 109 communities
 2,700,000+ people

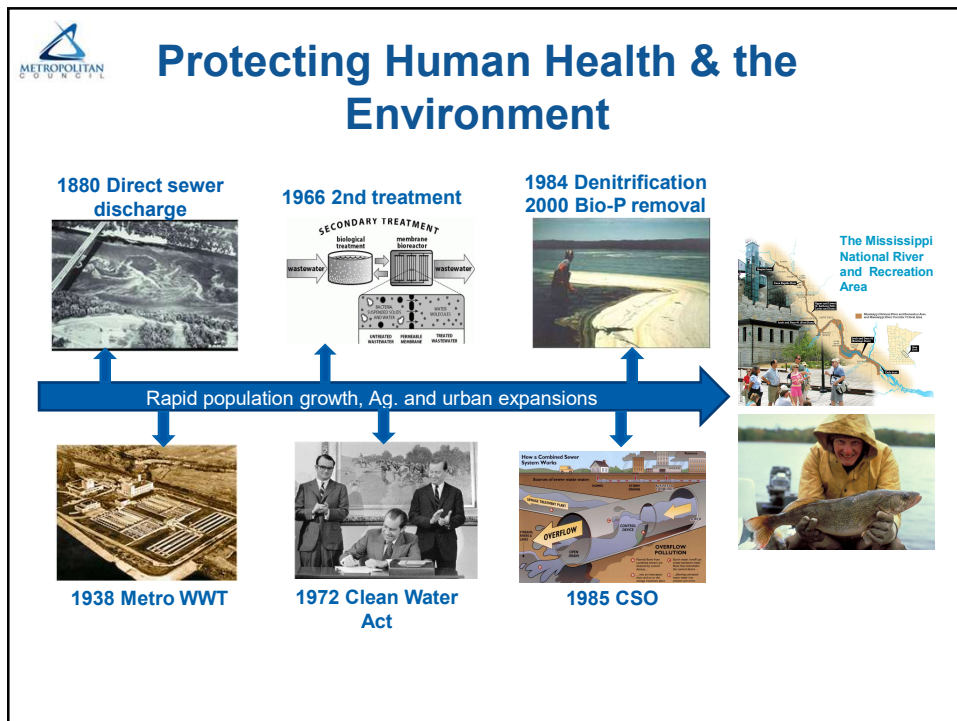
OUR FACILITIES

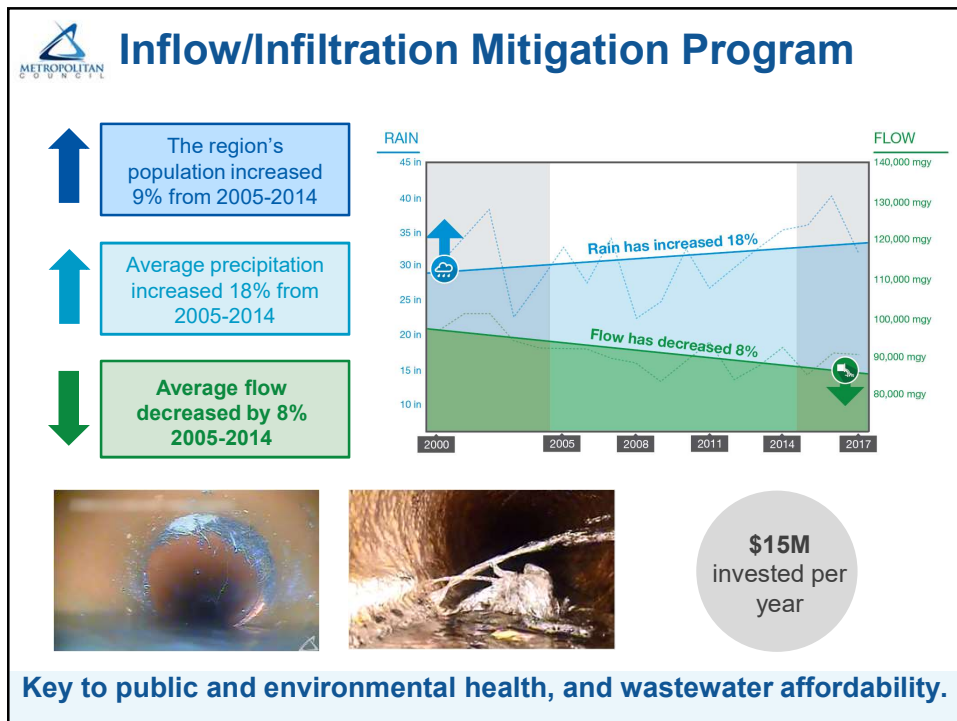
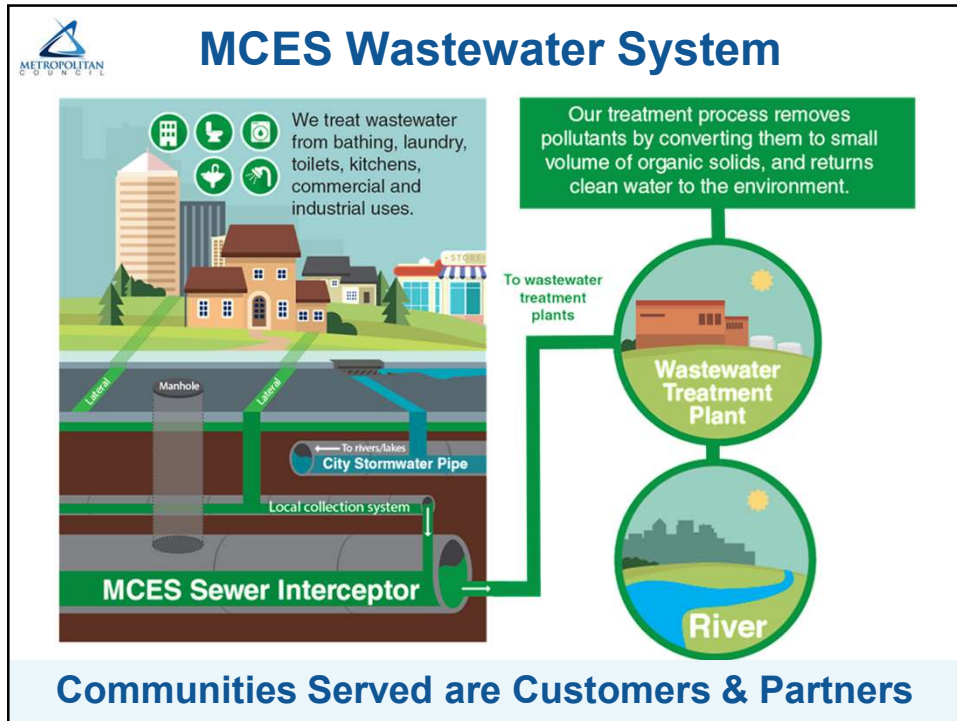
8 wastewater treatment plants
 610 miles of interceptors
 250 million gallons per day (avg)

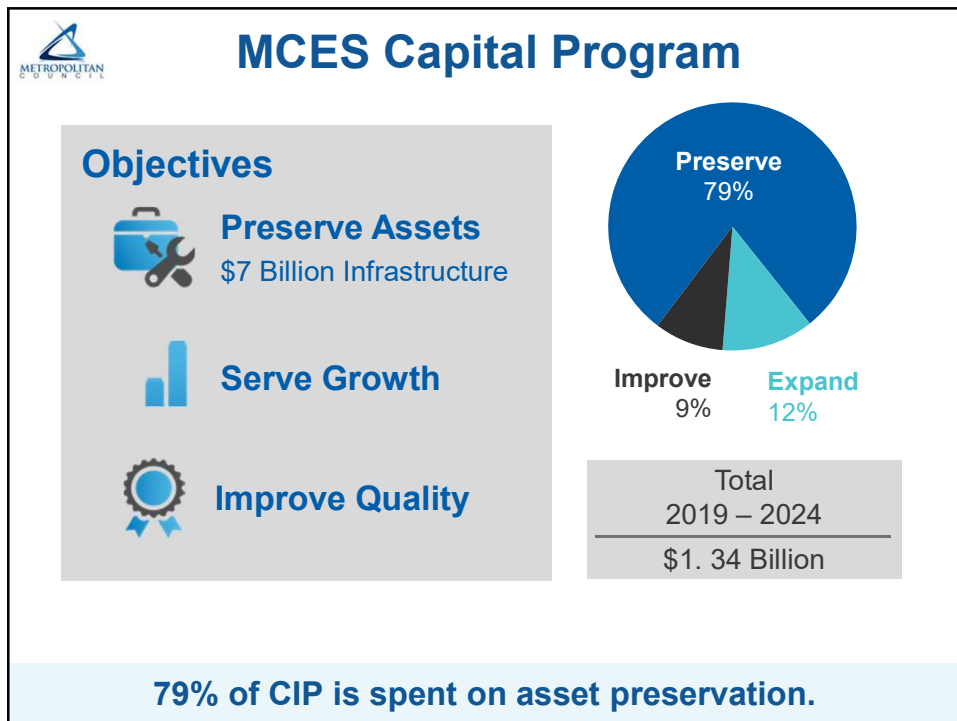
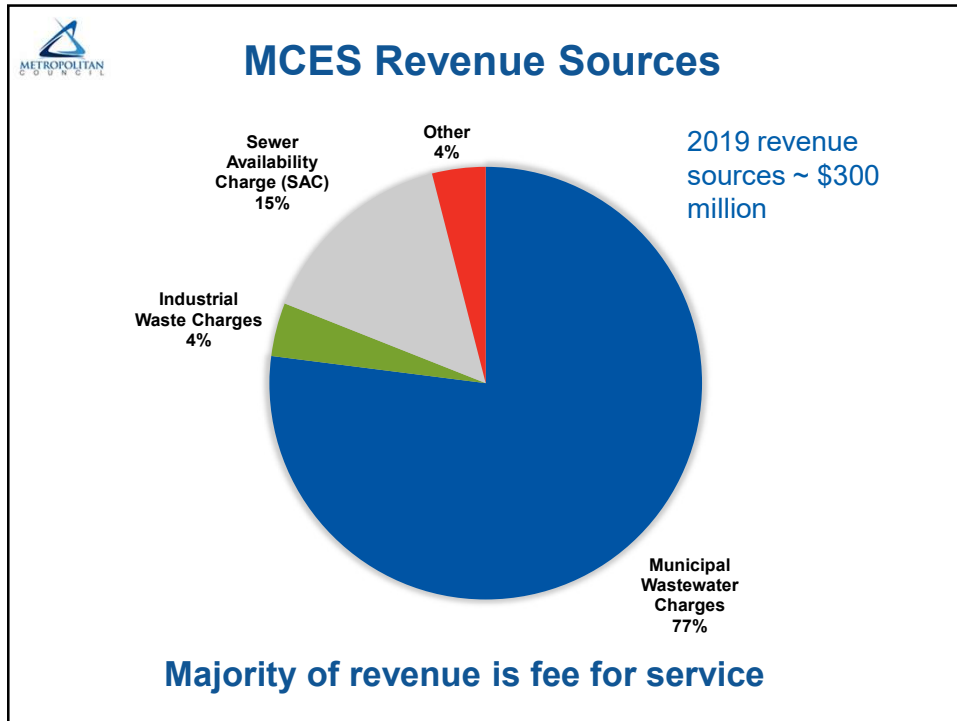
OUR ORGANIZATION

600+ employees
 \$7 billion in valued assets
 \$150 million /yr capital program

MCES Serves ~50% of the State's Population







Water Resources Planning

Adequate water supplies are essential for our region's growth, livability and prosperity.

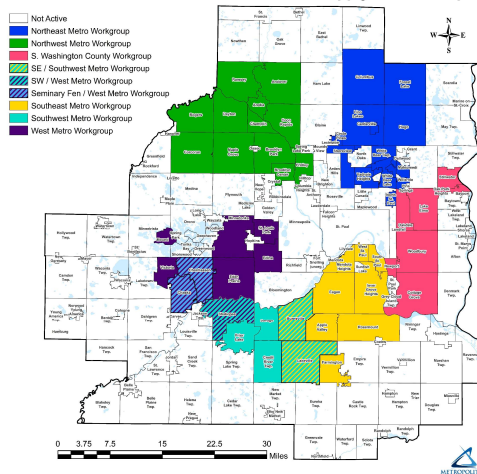
- Metropolitan Council Role in Regional Water Supply Planning
 - Produce a regional water supply plan
 - Support local government units making informed and effective decisions
 - Assist communities in developing and implementing local plans
 - Identify approaches for emerging issues
 - Maintain strong collaborative relationships with stakeholders
- Metropolitan Area Water Supply Advisory Committee
 - Municipalities/utilities, counties, state agencies
 - Collaborate with Council on planning
 - Work informed by technical advisory committee

9



Water Supply Sub-Regional Workgroups

Communities in Metro Area Water Supply Work Groups



Effective platform for collaboration.

