

Gillette's Unique Role

Serving the State's Most Challenging Cases

At Gillette, we specialize in treating children, teens and adults who have complex, lifelong medical conditions such as cerebral palsy, spina bifida, brain and spinal cord injuries, epilepsy, hydrocephalus, scoliosis, muscular dystrophy and craniofacial deformities.

- **Gillette patients often have multiple conditions, such as cerebral palsy and epilepsy**, so they need a team of medical specialists to manage their care during outpatient clinic visits and hospital stays.
- **Most of our patients require ongoing outpatient visits** to help them maximize their health, function, mobility and independence.

Isaiah, who has cerebral palsy, requires eye-gaze technology to communicate. ▶



- We have 18 outpatient clinics in 14 communities throughout the state, so more patients can be served close to home.
- Gillette's in-depth outpatient care supports primary care providers in communities throughout the state with specialty support.

Outpatient Reimbursement Is Inadequate

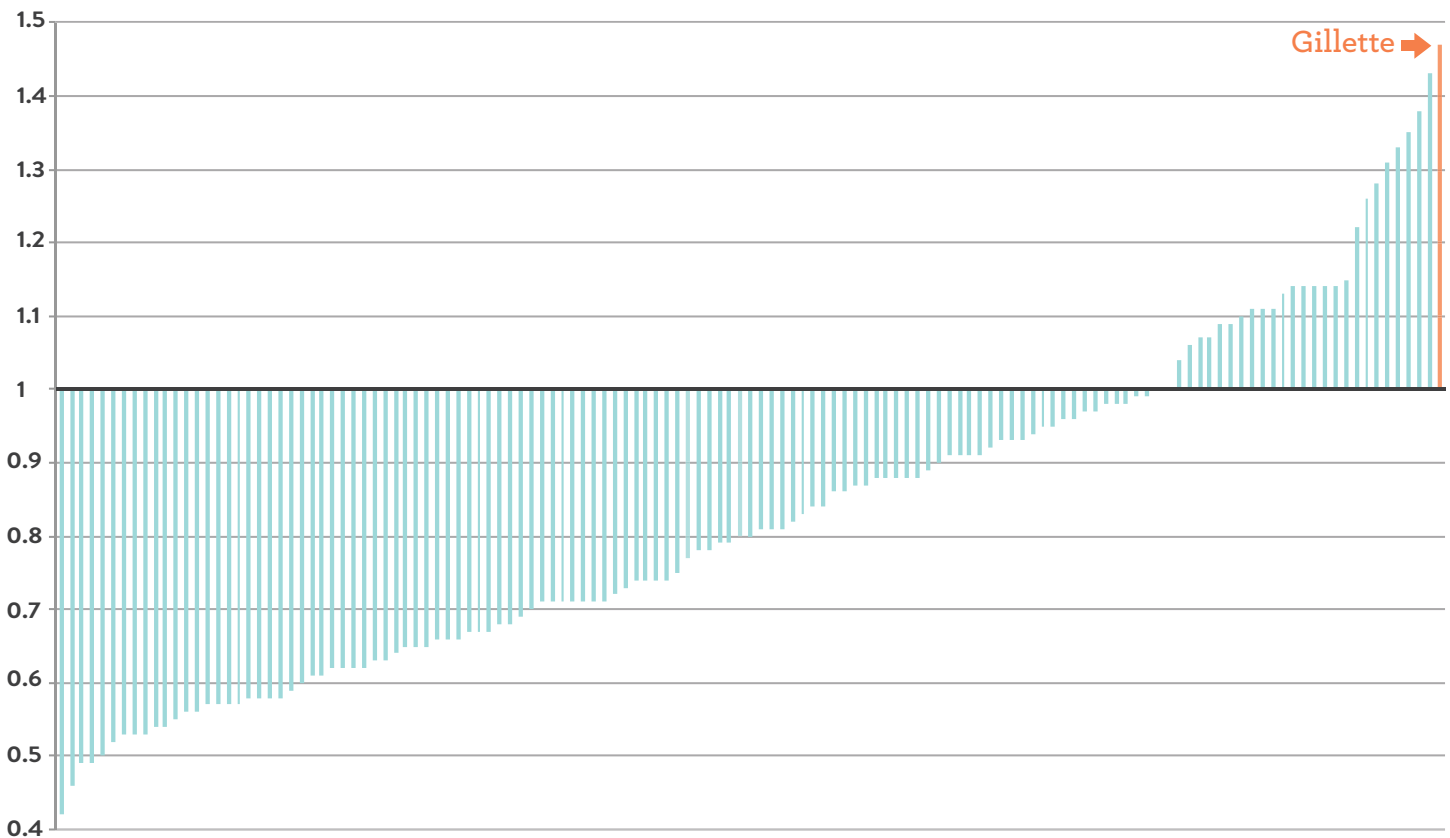
- Nearly 70% of Gillette patients have coverage through Medical Assistance.
- The majority of Gillette's Medical Assistance patients are covered through the Fee-for-Service program.
- Medical Assistance reimbursements covered only 44% of the cost of caring for those patients in 2012.

Our collaborative outpatient care model enables patients to receive all the treatment they need during one outpatient clinic visit instead of numerous individual appointments. During visits, patients are evaluated and treated by a team of physicians, specially trained nurses and nurse practitioners, rehabilitation therapists, and assistive technology specialists who customize braces, wheelchairs, walkers and communication devices. Collaboration improves communication and quality of care.

Our comprehensive outpatient care model enables us to address medical issues proactively, reducing hospital readmissions. Our 30-day readmission rate is 5.62%, compared to 16.8%, which is the rate of unplanned readmissions for patients with comparable levels of complexity treated at other hospitals across the country.¹

¹Journal of the American Medical Association, 2013 (309)4:372-380

Gillette's 2013 Case Mix Index Included Pediatric Inpatients With a Higher Level of Medical Complexity Than Any Other Minnesota Hospital



Gillette Children's Specialty Healthcare's patients often need a much higher level of medical care and resources than the average pediatric patient. Gillette's case mix index (a measure of case complexity) is 1.44 for pediatric patients age 0-18. The baseline index score for a patient who needs the average amount of resources is 1.0.

Source: Minnesota Hospital Association 2013

Gillette's Niche Services—At a Glance

These are some of the ways Gillette serves a unique population.

Gillette performed:

- 81.7% of orthopedic surgeries to align hips and femurs deformed by cerebral palsy
- 70.9% of orthopedic surgeries to address musculoskeletal issues associated with cerebral palsy
- 67% of spinal surgeries to treat scoliosis
- 64.3% of neurosurgical procedures to implant pumps used to treat spasticity associated with cerebral palsy, spina bifida and severe injuries

Gillette cared for:

- 69.2% of acute inpatient rehabilitation stays associated with brain or spinal cord injuries

- Gillette does more cranial vault surgery to treat craniosynostosis than the rest of the hospitals in the state *combined*.
- Nearly 100 percent of people who have cerebral palsy in Minnesota have been cared for at Gillette (based on the incidence of cerebral palsy and Gillette's patient counts).
- Gillette is a Level 1 Pediatric Trauma Center in collaboration with Regions Hospital, and we are accredited by the Commission on Accreditation of Rehabilitation Facilities (CARF) for pediatric rehabilitation. *We are the only Minnesota hospital to have both accreditations.*

Where to Find Gillette Clinics

Gillette Children's Specialty Healthcare has outpatient and outreach clinics throughout Minnesota, serving children and adults who have disabilities.



Number of Patients Seen in 2014 by Diagnosis

Brain Injury (acute, rehab and aftercare)	870
Brachial Plexus Injury	160
Cerebral Palsy	4,009
Cleft Lip and/or Palate	389
Craniosynostosis (and other anomalies of the skull and facial bones)	442
Epilepsy	2,184
Hydrocephalus	323
Juvenile Rheumatoid Arthritis (and related conditions)	336
Limb-Length Discrepancy	1,259
Muscular Dystrophy	442
Neurofibromatosis	73
Osteogenesis Imperfecta	63
Plagiocephaly	1,611
Scoliosis	3,159
Spina Bifida	518
Spinal Cord Injury	94
Spinal Muscle Atrophy	90
Torticollis	711



Patients by County

Minnesota	2013	2014
Aitkin	37	25
Anoka	1632	1553
Becker	67	65
Beltrami	158	143
Benton	130	161
Big Stone	8	8
Blue Earth	153	189
Brown	79	97
Carlton	58	61
Carver	455	477
Cass	82	79
Chippewa	49	45
Chisago	326	320
Clay	67	58
Clearwater	30	27
Cook	2	4
Cottonwood	29	37
Crow Wing	281	281
Dakota	2872	2839
Dodge	8	10
Douglas	142	133
Faribault	26	37
Fillmore	8	9
Freeborn	21	16
Goodhue	124	125
Grant	23	26
Hennepin	5662	5520
Houston	2	4
Hubbard	56	65
Isanti	124	147
Itasca	102	97
Jackson	5	5
Kanabec	45	41
Kandiyohi	214	210
Kittson	7	9
Koochiching	23	25
Lac Qui Parle	19	17
Lake	10	14
Lake of the Woods	3	4
Le Sueur	80	71
Lincoln	6	2
Lyon	62	57
Mahnomen	5	7
Marshall	7	7
Martin	43	35
McLeod	111	129
Meeker	76	78
Mille Lacs	104	120
Morrison	92	109
Mower	35	24
Murray	11	6

Minnesota	2013	2014
Nicollet	78	92
Nobles	17	10
Norman	6	10
Olmsted	33	36
Otter Tail	128	151
Pennington	16	23
Pine	88	75
Pipestone	3	5
Polk	37	48
Pope	26	28
Ramsey	3836	3722
Red Lake	8	7
Redwood	28	34
Renville	64	65
Rice	269	258
Rock	2	3
Roseau	36	28
St. Louis	269	264
Scott	757	752
Sherburne	438	436
Sibley	46	48
Stearns	382	441
Steele	68	72
Stevens	21	18
Swift	53	63
Todd	66	70
Traverse	3	3
Wabasha	13	11
Wadena	44	49
Waseca	50	42
Washington	1865	1840
Watonwan	28	29
Wilkin	11	8
Winona	13	15
Wright	585	591
Yellow Medicine	35	29
MN Unknown County	65	39
Total MN Patients	23,258	23,043

Western Wisconsin	2013	2014
County (City)		
Barron, WI (Rice Lake)	52	47
Bayfield, WI (Washburn)	16	12
Burnett, WI (Webster)	45	38
Dunn, WI (Menomonie)	56	55
Pepin, WI (Durand)	3	3
Pierce, WI (Ellsworth)	203	201
Polk, WI (Balsam)	173	166
St. Croix, WI (Hudson)	456	406
Douglas, WI (Superior)	76	66
	1,080	994

Patients by Selected City

Minnesota	2013	2014
Alexandria	94	94
Andover	202	208
Anoka	102	99
Apple Valley	318	322
Bemidji	115	112
Blaine	297	307
Bloomington	342	352
Brainerd	142	139
Brooklyn Center	136	143
Buffalo	101	94
Burnsville	373	353
Cambridge	53	64
Cannon Falls	26	24
Champlin	128	135
Chanassen	126	122
Chaska	135	151
Chisago City	36	33
Circle Pines	68	58
Cloquet	26	27
Columbia Heights	58	57
Coon Rapids	337	291
Cottage Grove	306	268
Crookston	15	21
Crystal	118	111
Delano	49	55
Duluth	127	127
Eagan	384	361
Eden Prairie	377	344
Edina	291	279
Elk River	175	153
Excelsior	73	56
Faribault	123	129
Farmington	253	232
Fergus Falls	61	59
Forest Lake	147	145
Fridley	110	100
Glencoe	20	22
Golden Valley	121	115
Grand Rapids	52	53
Hastings	232	237
Hopkins	90	87
Hugo	129	112
Hutchinson	48	55
Inver Grove Heights	226	242
Lake Elmo	62	81
Lakeville	359	381
Lindstrom	27	36
Litchfield	35	35
Little Falls	41	52
Long Lake	15	21
Mahtomedi	64	50
Mankato	122	144
Maple Grove	395	404

Minnesota	2013	2014
Marshall	44	38
Mendota Heights	107	96
Minneapolis	1635	1593
Minnetonka	264	230
Monticello	89	86
Mound	43	46
New Ulm	55	68
North Branch	77	86
Northfield	73	71
Oakdale	190	178
Owatonna	60	60
Plymouth	422	357
Princeton	46	47
Prior Lake	171	166
Red Wing	66	63
Richfield	133	141
Rochester	27	30
Rogers	78	71
Rosemount	220	206
Roseville	251	257
Savage	170	164
Shakopee	204	200
Shoreview	179	199
South St. Paul	181	174
Spring Park	5	5
St. Cloud	181	206
St. Louis Park	179	184
St. Paul	2330	2198
Stillwater	207	214
Vadnais Heights	88	98
Waconia	53	60
Wadena	25	17
Waseca	30	24
Wayzata	85	80
West St Paul	164	148
White Bear Lake	228	246
Willmar	124	122
Woodbury	556	548

Western Wisconsin	2013	2014
Amery, WI	29	24
Baldwin, WI	30	23
Eau Claire, WI	43	46
Hudson, WI	204	173
La Crosse, WI	5	7
Menomonie, WI	38	37
New Richmond, WI	99	87
Osceola, WI	28	28
Prescott, WI	39	43
Rice Lake, WI	12	9
River Falls, WI	87	87
Siren, WI	13	13
Superior, WI	52	47



Gillette
Children's

Specialty Healthcare

What Sets Us Apart



moving *specialty care* forward >

Our Focus Sets Us Apart

Gillette Children's Specialty Healthcare is different from other children's hospitals for one simple reason: **our focus**. Gillette is a nationally and internationally recognized leader in the diagnosis and treatment of children, teens and adults who have disabilities and complex medical conditions. We focus on providing our patients with an exceptional depth of expertise, rather than trying to provide care for all pediatric conditions. Our patients' needs are extensive and, in many cases, require lifelong care.

We Treat Some of the Most Complex Conditions in Pediatric Medicine

Gillette's Centers of Excellence bring together the top experts in a variety of medical specialties and subspecialties. Our teams collaborate to provide interdisciplinary care for complex conditions such as cerebral palsy, epilepsy and spina bifida.

Pediatric Orthopedics

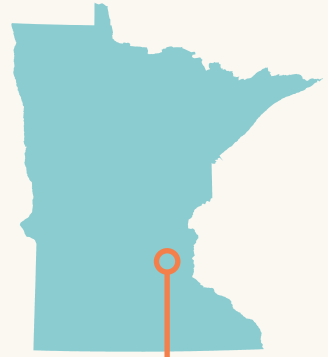
Gillette has the largest group of fellowship-trained pediatric orthopedic surgeons in the Midwest. Consequently, our orthopedic surgeons are able to specialize further—treating rare orthopedic disorders. We train surgeons from around the world, conduct research, and identify and measure outcomes for complex treatments.



HALF of the pediatric orthopedic inpatients in the Twin Cities metro area come to Gillette—more than to all other local children's hospitals combined

Pediatric Rehabilitation

Gillette offers the region's top inpatient rehabilitation center for children and teens and the nation's largest group of board-certified pediatric rehabilitation medicine physicians. We have the expertise to address the complex medical and rehabilitation needs of patients who experience brain injuries or spinal cord injuries, or who are recovering from other serious conditions.



We see close to **100%** of all pediatric inpatient rehabilitation patients in the Twin Cities metro region

Cerebral Palsy

Gillette is world-renowned for medical treatments and rehabilitation services dedicated to reducing the effects of cerebral palsy. Specialists from multiple disciplines use advanced diagnostic techniques and innovative treatments to manage all aspects of cerebral palsy.

80% of Gillette's international patients receive treatment for cerebral palsy



Gait and Motion Analysis

We operate one of the busiest clinical motion analysis centers in the nation. At our James R. Gage Center for Gait and Motion Analysis, our specialists use state-of-the-art computer and video technology to measure movement patterns in people who have cerebral palsy, spina bifida, brachial plexus and other complex conditions.

73% of international patients come to Gillette for motion analysis at our world-renowned center

Pediatric Neurosciences

Gillette ranks among U.S. News and World Report's Best Children's Hospitals in pediatric neurology and neurosurgery. We specialize in diagnosing and treating conditions such as epilepsy, muscular dystrophy, movement disorders, hydrocephalus and spina bifida.



One of the largest
craniofacial programs
in the nation—

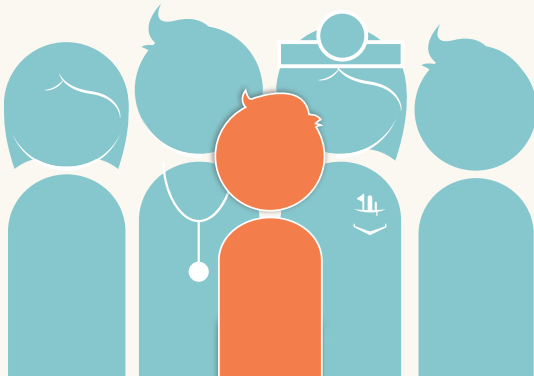
We've treated nearly
21,000
Patients since 1999

Craniofacial Services

Gillette has a unique breadth and depth of clinical experience in treating children who have complicated craniofacial conditions. Our specialists care for conditions that include cleft lip and palate, craniosynostosis, deformational plagiocephaly, facial trauma, hemangiomas and torticollis.

Pediatric Subspecialty Care

Gillette brings together a wide range of pediatric specialists to treat complex, difficult-to-diagnose conditions. For example, we care for children who have Guillain-Barré syndrome, Rett syndrome, juvenile arthritis and related conditions.



Our patients receive a
full spectrum of care in
one location

We're the First . . .

- Level I Pediatric Trauma Center in Minnesota—in partnership with Regions Hospital



LEVEL I PEDIATRIC TRAUMA CENTER

- Gait and motion analysis center in the nation to receive certification from the Commission for Motion Laboratory Accreditation

We're One of the First in the Country to . . .

- Address the needs of people who have disabilities and complex conditions—that's been Gillette's mission for more than a century
- Focus on adults with childhood-onset disabilities—we provide care at Gillette Lifetime Specialty Healthcare

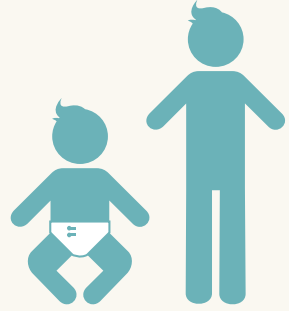
We're the Twin Cities' Only . . .

- Pediatric inpatient rehabilitation facility accredited by the Commission on the Accreditation of Rehabilitation Facilities (CARF)
- Pediatric orthopedics program to rank among the nation's best
- Children's hospital with top-ranked pediatric neurology and neurosurgery programs



We Offer a Lifetime of Care

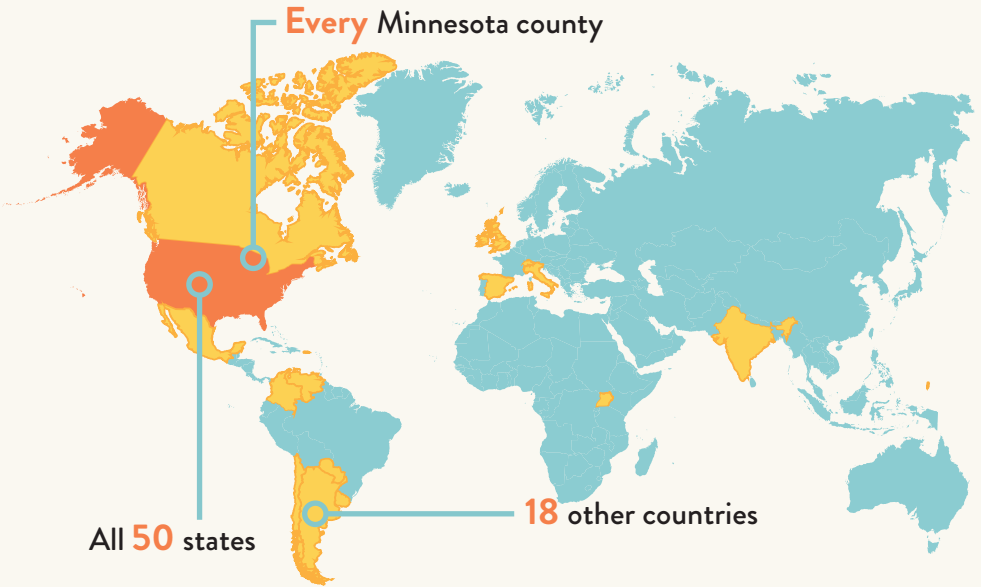
Gillette patients have long-term conditions that often require care into adulthood. To meet their lifelong needs, Gillette Lifetime Specialty Healthcare offers services for adults who have disabilities that began during childhood. At Gillette, we often begin seeing patients as infants and continue providing age-appropriate specialty health care throughout their lives.



Our Reach Is Local, National and Global

Gillette is an international referral center for pediatric, adolescent and adult patients who have disabilities and complex medical conditions.

Patients come to us from:



Our Mission

Gillette Children's Specialty Healthcare provides specialized health care for people who have short-term or long-term disabilities that began during childhood. We help children, adults and their families improve their health, achieve greater well-being and enjoy life.



St. Paul (Main) Campus
200 University Ave. E.
St. Paul, MN 55101
651-291-2848
800-719-4040 (toll-free)

Brainerd Lakes Clinic
15860 Audubon Way
Baxter, MN 56401
218-824-5001
800-578-4266 (toll-free)

Burnsville Clinic
305 E. Nicollet Blvd.
Burnsville, MN 55337
952-223-3400
866-881-7386 (toll-free)

Duluth Clinic
Lakewalk Center
1420 London Rd.
Duluth, MN 55805
218-728-6160
800-903-7111 (toll-free)

Maple Grove Clinic
9550 Upland Ln. N.
Maple Grove, MN 55369
763-496-6000
888-218-0642 (toll-free)

Minnetonka Clinic
6060 Clearwater Dr.
Minnetonka, MN 55343
952-936-0977
800-277-1250 (toll-free)

Minnetonka Therapies
12400 Whitewater Dr., Suite 2030
Minnetonka, MN 55343
952-908-1500
855-908-1500

Willmar Clinic
Lakeland Health Center
502 2nd St. S.W.
Willmar, MN 56201
651-634-1938
800-578-4266 (toll-free)

Outreach Clinics
For locations and schedules:
651-634-1938
800-578-4266 (toll-free)
www.gillettechildrens.org



St. Paul - Phalen Clinic
435 Phalen Blvd.
St. Paul, MN 55130
651-636-9443
800-578-4266 (toll-free)

www.gillettechildrens.org