



Climate Action

Minnesota House Sustainable Infrastructure Committee



January 11, 2023

Past and current climate work



Tools, partnerships, and action

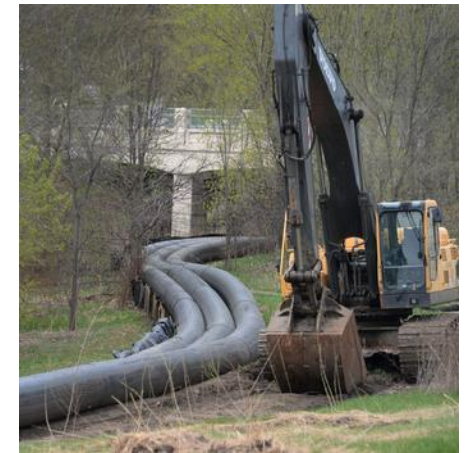
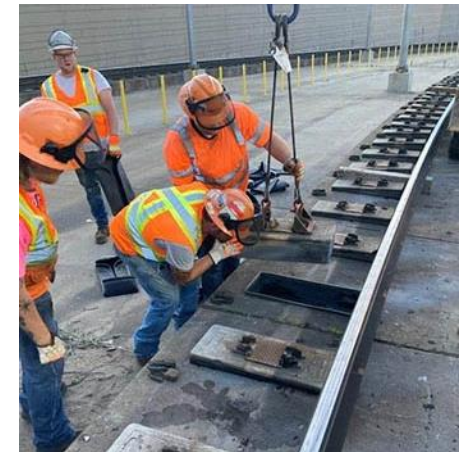
- [Climate Vulnerability Assessment](#)
- [Twin Cities Greenhouse Gas Inventory](#)
- [Solar-for-Vouchers program](#)
- [Growing Shade](#)
- [Improving energy efficiency in our wastewater operations](#)
- [Zero-Emission Bus Transition Plan](#)
- [Laying the groundwork to accelerate electric vehicle adoption](#)

Why a climate plan?

Climate change is already impacting our buildings, infrastructure, and operations

- Extreme heat and increased freeze/thaw cycles damages streets and highways
- Flooding causes facility relocation, like sewer pipes and regional trails
- Transit vehicles and systems lose operational reliability in extreme heat

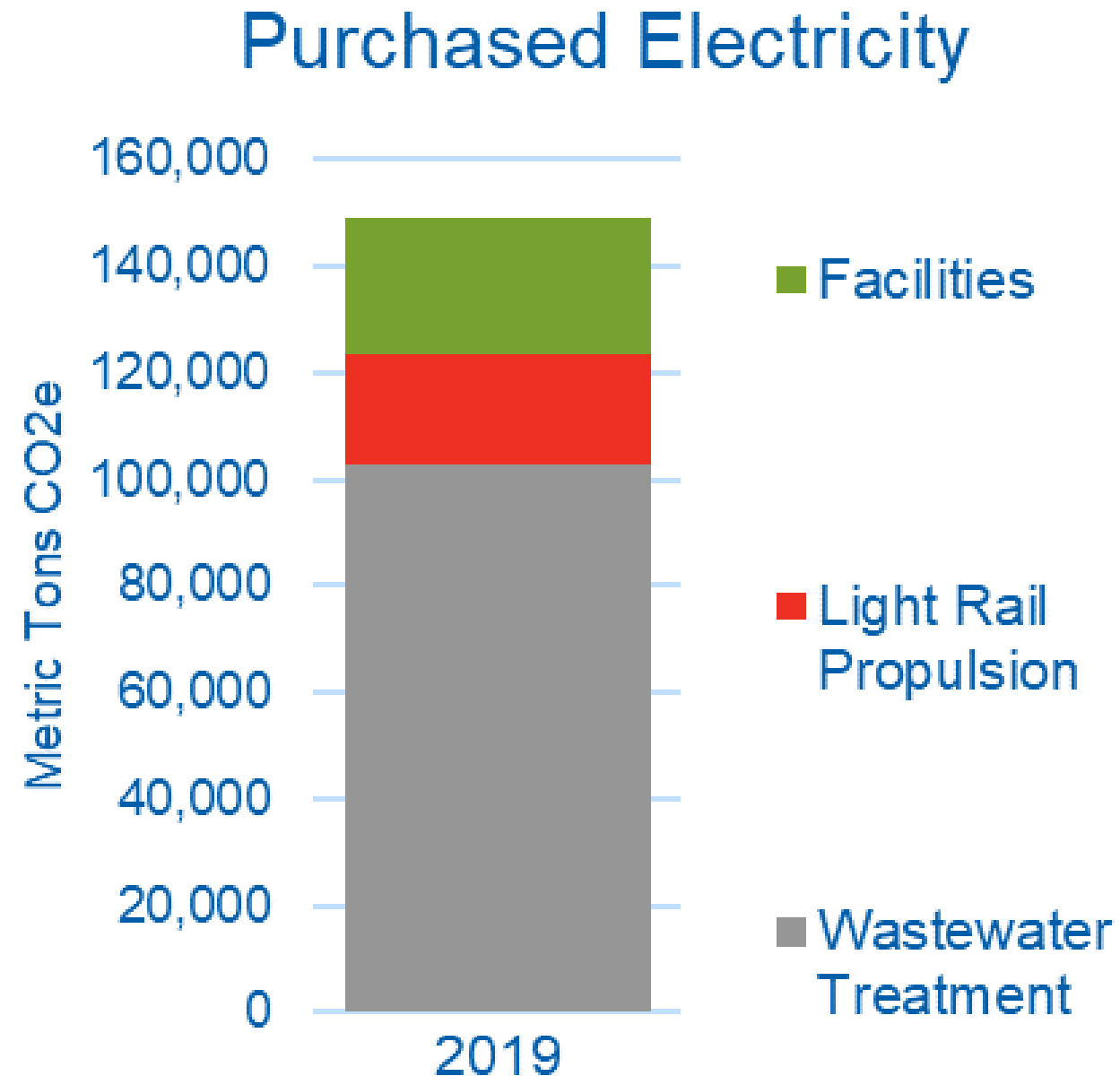
Reducing emissions from our operations and assisting local governments to reduce theirs will help meet the state vision for carbon neutrality



Our emissions: Purchased electricity

Leading source of our emissions

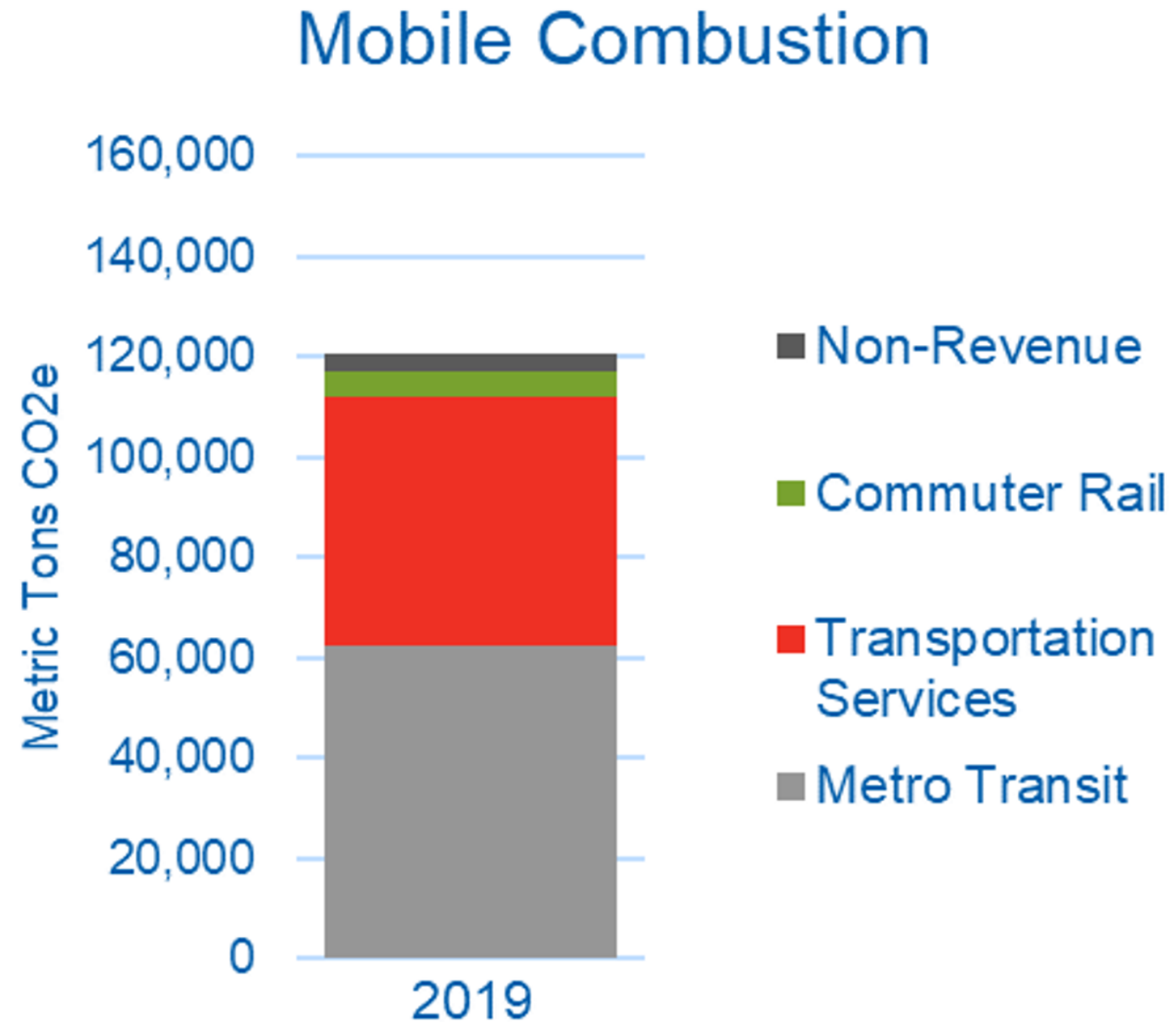
- Electricity powers our wastewater treatment plants, bus garages, light rail operations, and administrative offices.



Our emissions: Mobile combustion

Fossil fuels power our vehicle fleets

- Metro Transit and Metro Mobility buses
- Commuter rail
- Nonrevenue vehicles, such as maintenance trucks



Climate Action Plan



Dovetailing with the Minnesota Climate Action Framework

- Internal to our planning and operations; it is not a regional climate action plan
- Five-year time frame
- Lays the groundwork for more action beyond 2027
- Organized by commitments, strategies, and actions

Five Areas of Focus

Commitment 1

We will incorporate environmental justice principles as we plan, implement, and evaluate our climate action work

Commitment 2

We will accelerate emissions reductions from our operations to achieve carbon neutrality

Commitment 3

We will accelerate regional emissions reduction through existing and new partnerships

Commitment 4

We will reduce risks and impacts of climate change hazards to our facilities and services

Commitment 5

We will support and collaborate with partners to advance regional climate adaptation efforts



Looking toward the future



Upcoming work

- Begin Climate Action Work Plan implementation
- Long-range planning work - 2050 Regional Development Guide
 - Develop climate mitigation and adaptation strategies to address current and future climate impacts in the region and reduce regional emissions (policy chapters: Housing, Water Resources, Transportation, Parks)
- Support local governments in their climate action work



LisaBeth Barajas

Executive Director, Community Development Division
lisa.barajas@metc.state.mn.us

