

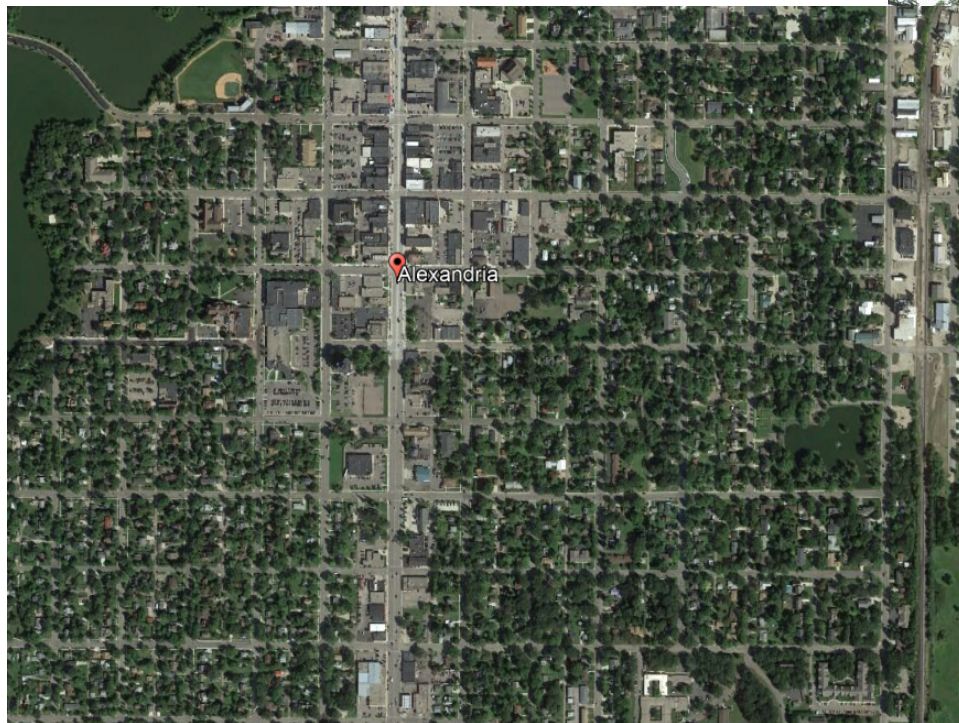
Emerald Ash Borer and Community Impacts

Karen Zumach | President

Minnesota Shade Tree Advisory Committee



Our Urban and Community Forest



A Statewide Problem

Emerald Ash Borer confirmed in Cottonwood County
PAUL — The Minnesota Department of Agriculture (MDA) has confirmed emerald ash borer (EAB) in Cottonwood County. This is the 26th ...

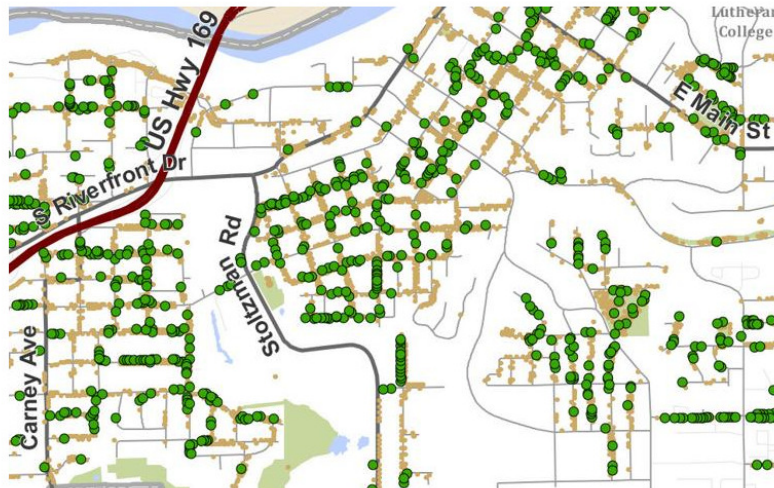
Invasive emerald ash borer found in Wayzata

The number for Wayzata Public Works is 952-404-5360. For information from the Minnesota Department of Agriculture, visit mda.state.mn.us/eab.

Emerald Ash Borer Found in Sibley, Carver Counties
The Minnesota Department of Agriculture (MDA) has confirmed the presence of emerald ash borer (EAB) in Carver and Sibley counties.

Emerald ash borer discovered - Albert Lea Tribune

Emerald ash borer larvae kill ash trees by tunneling under the bark and ... EAB will have a major impact on Minnesota, according to the release, ...



In preparation for the arrival of the emerald ash borer, Mankato city officials have inventoried all of the ash trees planted on boulevards and in city parks. (Some trees marked on this map may have been removed already.) To see the number of ash in other parts of the city, check the larger version of this map at mankatofreepress.com.

Map provided by City of Mankato

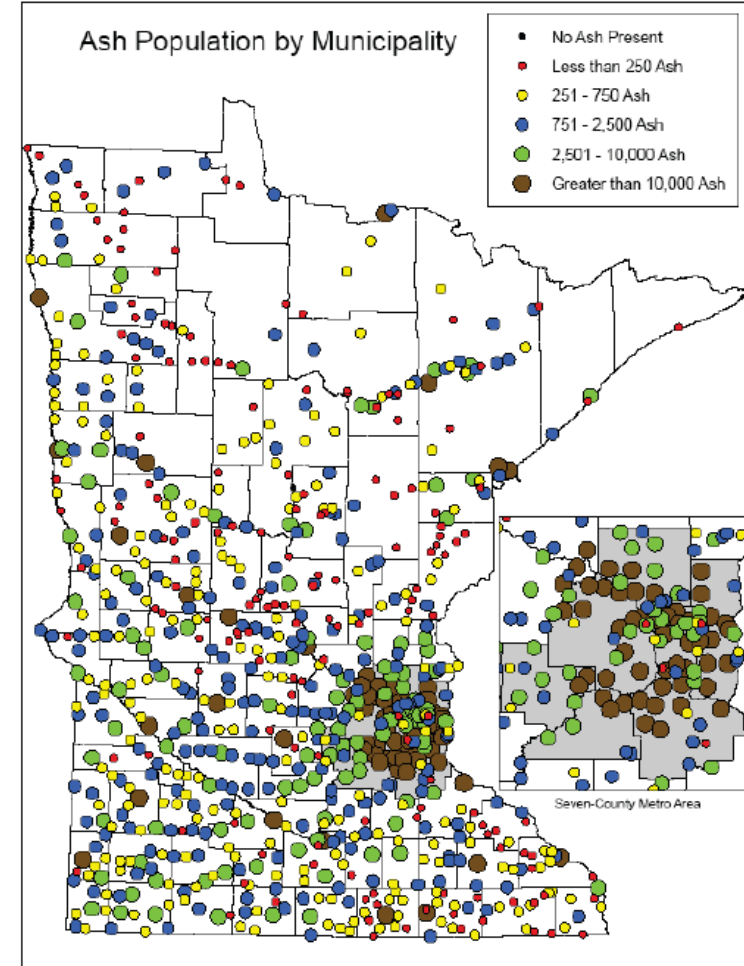
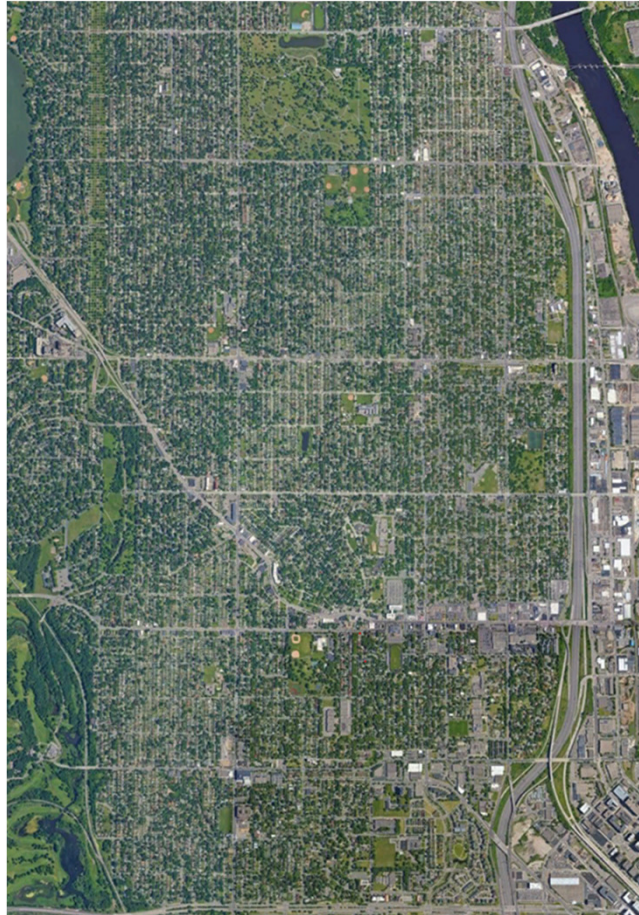


Figure 4. Ash populations in Minnesota municipalities, all tree-size classes. (Inset shows Minneapolis-St. Paul metropolitan area at enlarged scale.)



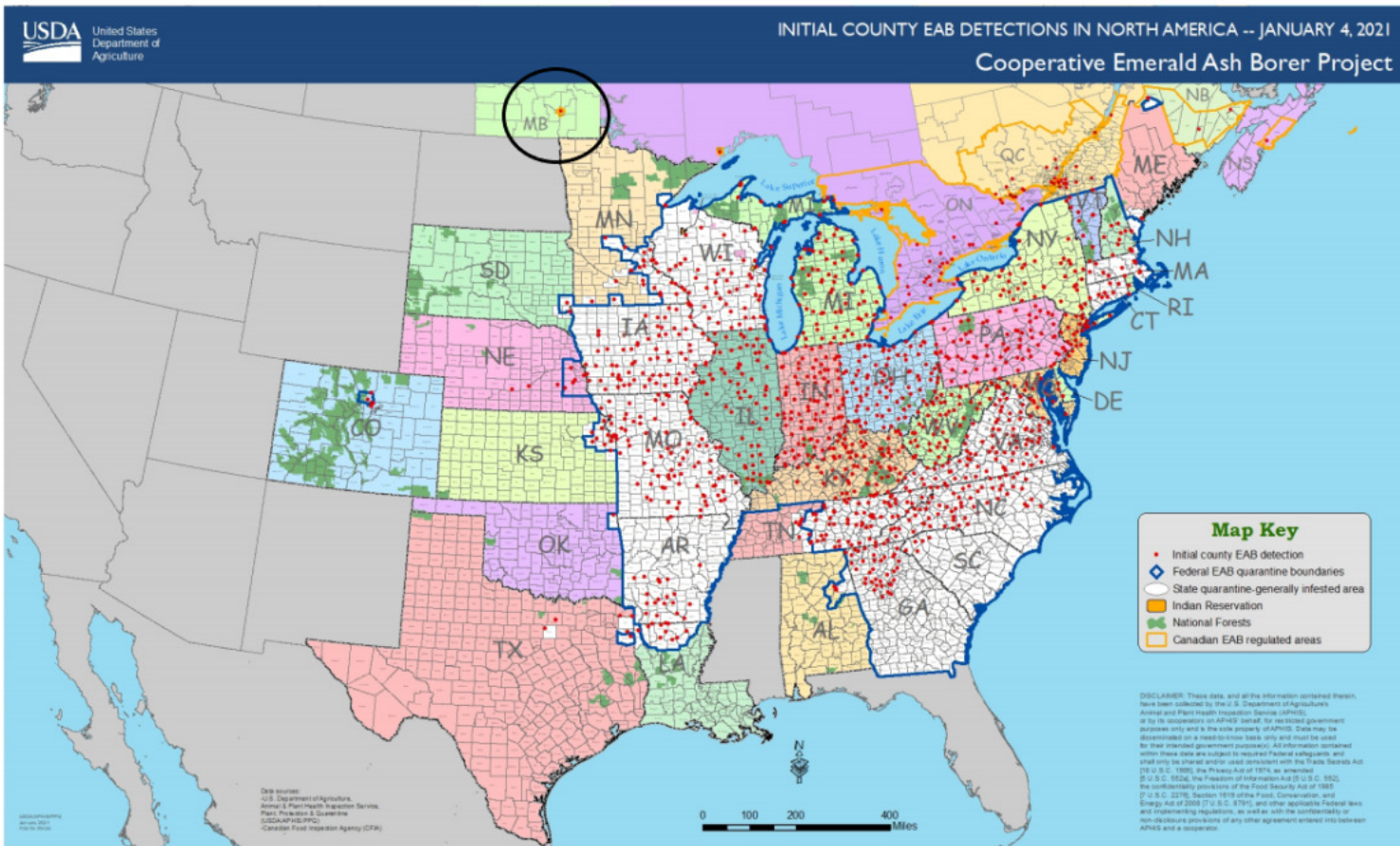
A Predictable Natural Disaster?



Scar from 2011 tornado, Google Earth, 2019



EAB in North America



USDA, 2021

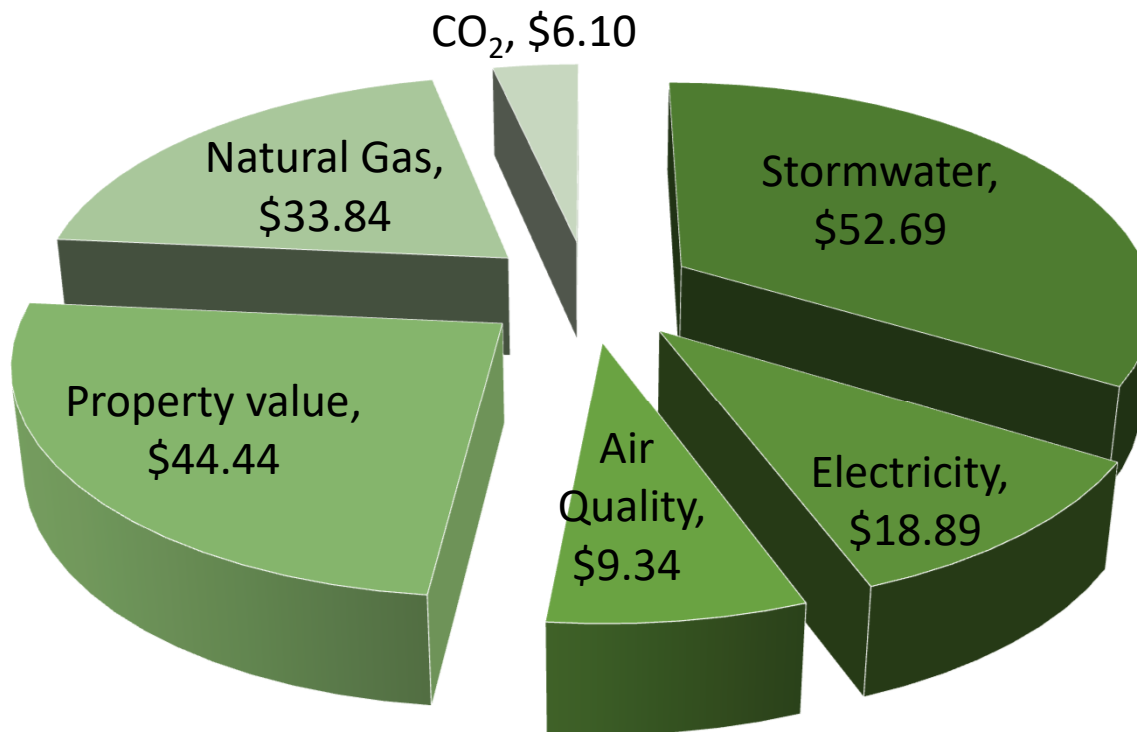


Tree Benefits as Green Infrastructure



Tree Benefits as Green Infrastructure

A 18" DBH (diameter at breast height)
ash tree provides benefits of \$165 per year



From the National Tree Benefits Calculator, www.treebenefits.com/calculator



Tree Benefits as Green Infrastructure



The Plan Forward

- Provide assistance in the form of matching grants to cities and towns to allow access to all the tools necessary to mitigate the effects of EAB-\$8.5 million/year.
- Support sustained urban and community forestry funding to create a more resilient urban and community forest for the future-\$2 million/year.
- Support research efforts to protect our northern black ash stands.
- Incentivize wood utilization to adhere to climate change goals.



*Urban ash re-use, Rochester, MN Photo:
Jeff Haberman*

