

PRAIRIE LAKES MUNICIPAL SOLID WASTE AUTHORITY

ASH RECYCLING & TRANSFER STATION

MODERNIZATION CAPITAL INVESTMENT REQUEST

Total Project Cost: \$14.534 Million | State Request: \$7.267 Million
HF 4747 (Murphy, Backer, Joy, Keeler, Bliss, Wiener, Gander)
SF 4965 (Rasmusson, Utke, Kupec, M. Johnson)

Prairie Lakes Municipal Solid Waste Authority (PLMSWA) is a five-county partnership (Becker, Clay, Otter Tail, Todd, and Wadena) that processes **54,000 tons of municipal solid waste annually** at its resource recovery facility in Perham. The process generates approximately **10,000–11,000 tons of ash each year**, currently landfilled at the Otter Tail County-owned Northeast Otter Tail (NEOT) facility near New York Mills.

Following a successful 2025 pilot project using ash in road construction (CSAH 75), PLMSWA is prepared to transition from landfilling ash to permanently recycling it for use in county road projects.

This project constructs a **permanent indoor ash processing facility** and relocates/modernizes the existing solid waste transfer station.

› WHY THIS PROJECT IS NEEDED

- 10,000 tons of ash landfilled annually
- 18,000 cubic yards of demolition waste landfilled annually
- Proposed MPCA rule changes will require demolition waste to go to lined landfills
- Pilot projects demonstrated success, but permanent enclosed processing is needed for efficiency and environmental protection



Screened ash stockpiles

› THE SOLUTION

Ash Processing Facility

An enclosed building (modeled after successful Minnesota facilities) will:

- Process ash for safe use in road construction
- Recover ferrous and non-ferrous metals for recycling
- Reduce landfill volume

The five counties maintain **3,500 miles of roadway**, providing long-term reuse capacity. The 2025 pilot used approximately **1,000 tons of ash per mile**.

Transfer Station Modernization

The project relocates the current transfer station to a newly purchased 10-acre site and upgrades services to include:

- Construction & demolition waste transfer
- Household hazardous waste services
- Expanded recycling and reuse
- Fire suppression, water service, and modern safety upgrades

The facility will transition from an unlined demolition landfill to a regional “spoke” facility transporting C&D waste to lined landfills.

› PROJECT BENEFITS

- ✓ End ash landfilling in Otter Tail County
- ✓ Increase metal recycling
- ✓ Offset mining of virgin aggregate for roads
- ✓ Improve environmental protection and stormwater management
- ✓ Align with MPCA and EPA waste hierarchy goals

› TIMELINE

Financing: 2026

Construction: 2028

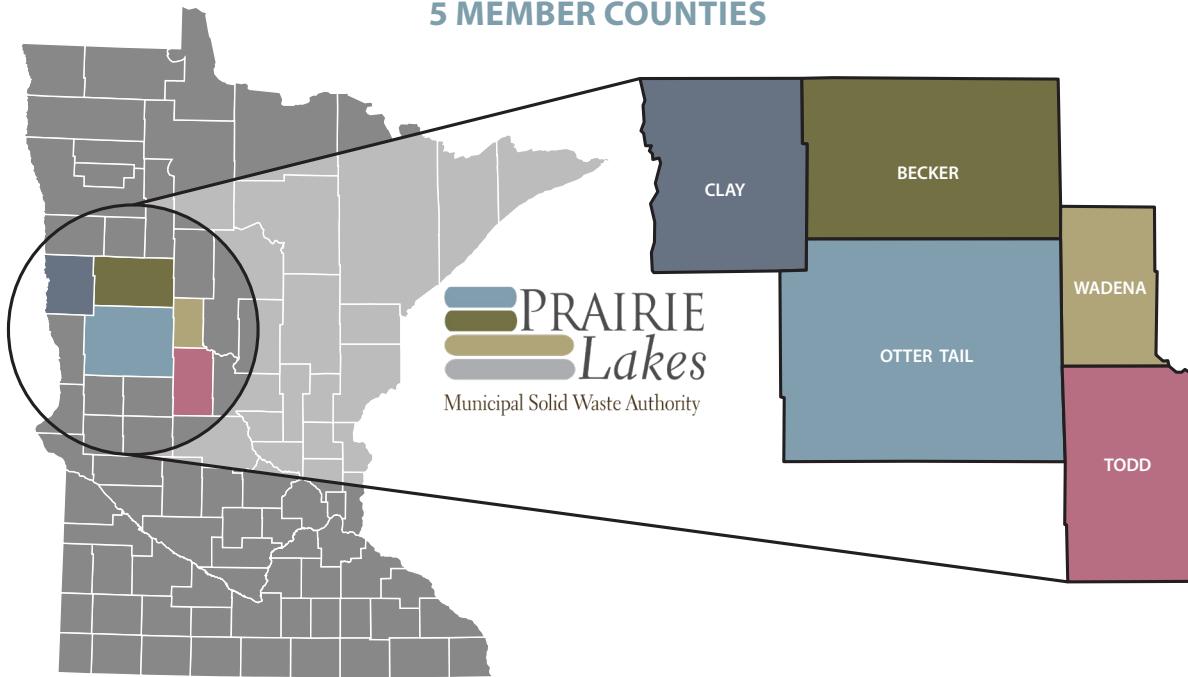
Design & Permitting: 2027–2028

Operations Begin: 2029

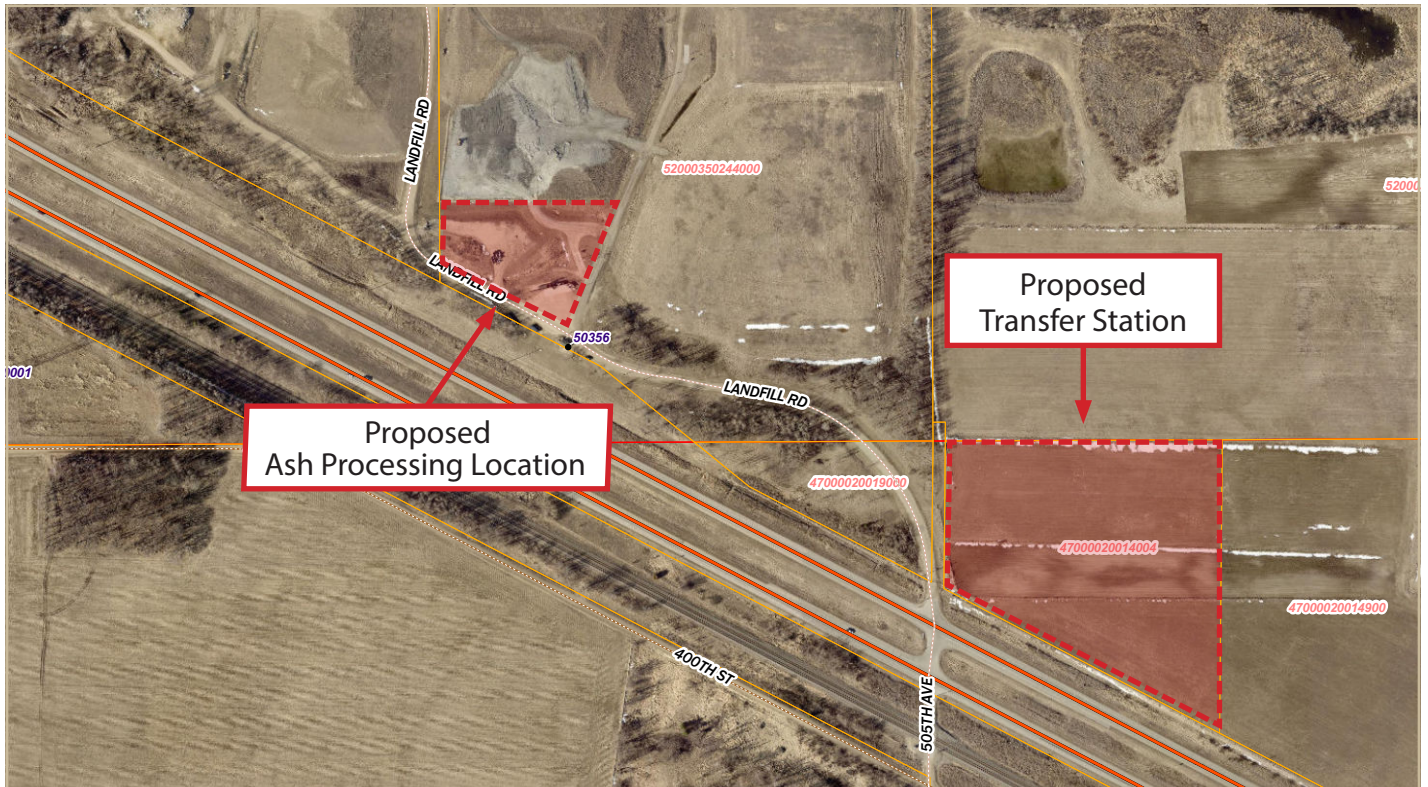
A regional solution that turns waste into infrastructure — reducing landfill use, improving environmental protection, and strengthening Minnesota’s transportation system.

ASH RECOVERY & RECYCLING CENTER

5 MEMBER COUNTIES



PROPOSED LOCATIONS



Chris McConn,
Solid Waste Director
Otter Tail County
cmconn@ottertailcounty.gov
Ph 218-770-2810

Nick Leonard,
Deputy Administrator
Otter Tail County
nleonard@ottertailcounty.gov
Ph 218-671-5762

Sarah J. Psick
Psick Capitol Solutions, Inc.
spick@psickcapitalsolutions.com
Ph 952-200-4499