



Preschool Development Grant

Amanda Varley | Preschool Development Grant Manager

Mission

Minnesota's Preschool Development Birth through Five grant focuses on supporting families with young children by improving collaboration between state programs so they can be born healthy and thrive within their communities.

Grant Overview

In partnership with the departments of Education, Health, and Human Services, along with the Children's Cabinet, the Preschool Development Grant (PDG) aims to align education and care systems across the state. The three-year \$26.7 million federal grant ends December 30, 2022.



Preschool Development Grant Builds on Past Coordination

- **Timeline of Recent Cross-Agency Systems Efforts:**
 - Race to the Top: 2012 to 2015
 - Two-Generation Policy Network: 2016 to Present
 - Early Childhood Systems Reform: 2017
 - Created a shared vision across agencies.
 - Preschool Development Grant: 2019 to 2022
- **Shared Vision and Priorities:** [Needs Assessment](#) & [Strategic Plan](#)



Preschool Development Grant 2020-2022 Strategic Plan Summary



"There are so many hoops. You have to tell them about your entire life before you can access just a little bit of help. I only go for help when I really, really need it."

Parents, Minneapolis

"Look at employment strategies holistically, taking mental health, addiction, and living situations into account and providing assistance where needed."

Providers, Duluth

"Create the system to work for individuals, families, and communities; not making the individuals, families, and communities bend to the system."

Participant from Leech Lake Tribal Nation

"Trauma informed care is missing. [We] need more people trained in trauma informed care."

Community Needs Assessment Respondent



"Again, it comes to trust – there is not trust for communities of color and indigenous communities."

Public Meeting, New Hope

"Strengthen relationships between Somali community and school with lessons from the Somali community who speaks the language and can be a strong language and cultural translator."

Somali Parents, St. Paul

"I hear so many people who connect with a job, but the hours do not work for their child care, their vehicle is not reliable, they do not have the right clothes."

Providers, Otter Tail County



"A lot of these intersect, and you can't have one without the other."

Child Care Providers, Minneapolis

Grant's Guiding Principles



Intersectionality

Intersectionality refers to the concept that overlapping social identities that impact the experience of an individual.



Interagency Collaboration

Given the intersectionality of the issues impacting children and families – interagency collaboration is needed to support solutions and dismantle structures perpetuating inequities.



Racial Equity

Disparities that fall primarily along racial lines, with African American and American Indian communities experiencing the brunt of these inequities.



Geographical Responsiveness

Geography is often included as a factor when discussing equity but is rarely explicitly discussed.



Trauma and Healing Informed

Trauma is a response of physical, mental or emotional distress in reaction to overwhelming adverse experiences.



Whole Family System

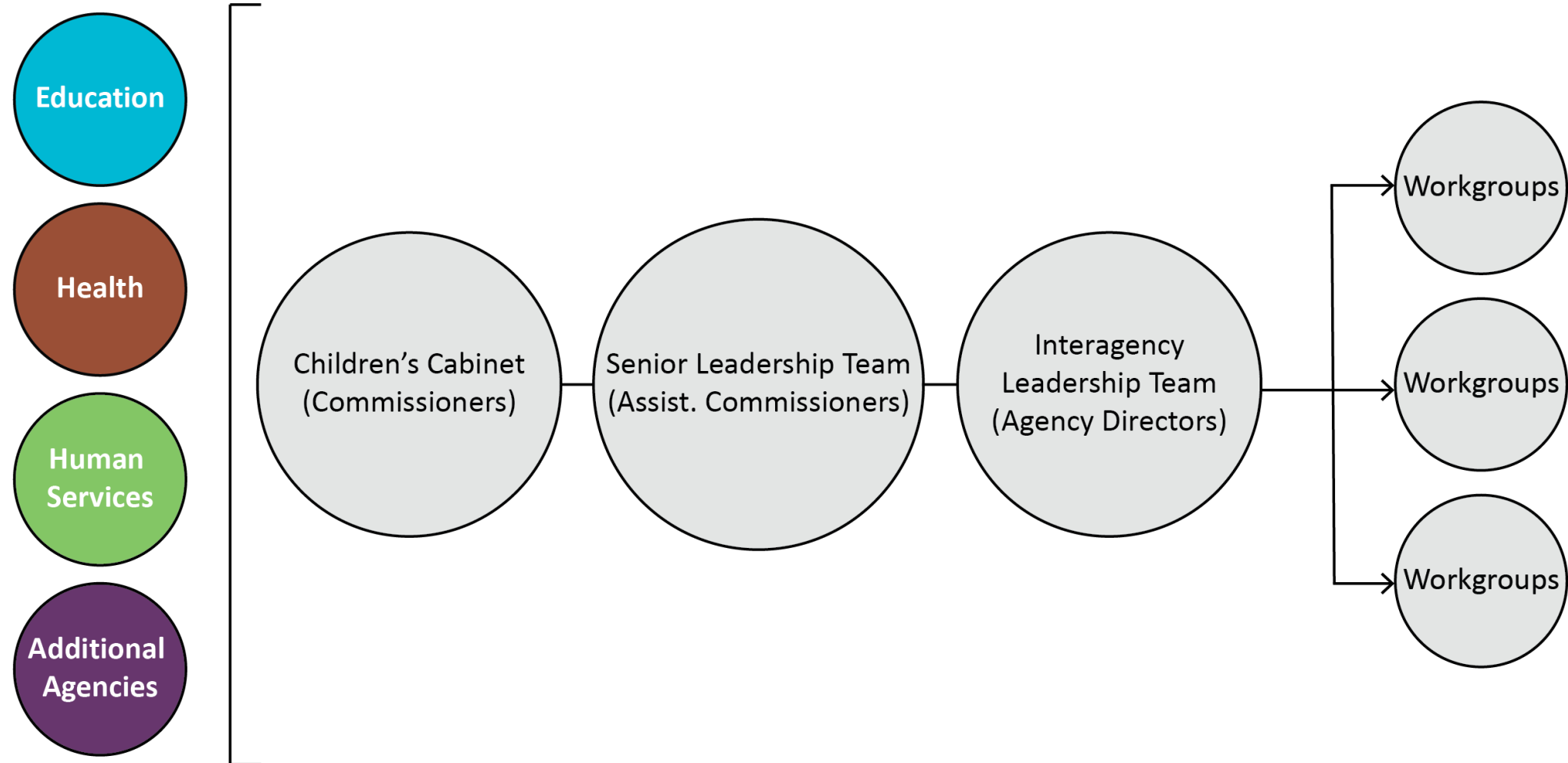
Whole family approaches focus on creating opportunities for and addressing needs of both children and the adults in their lives together.



Belonging and Inclusion

Inclusion in the community and our connections with one another enhance or weaken well-being and trust within communities.

Shared Leadership



Grant Activities



Explore Technology to coordinate eligibility and services.



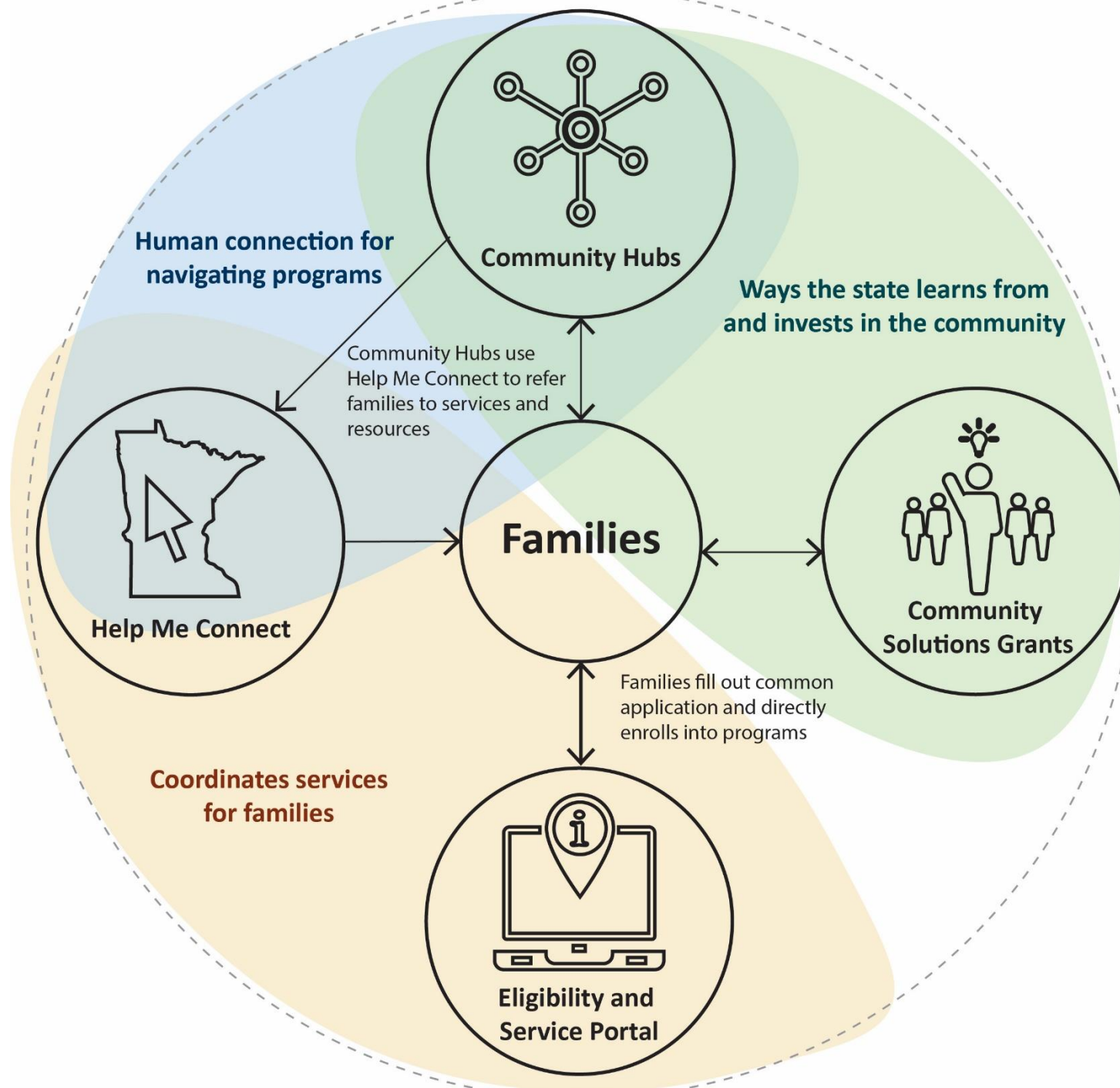
Fund Help Me Connect, a system to connect families and those working with families and direct referral to programs and services.



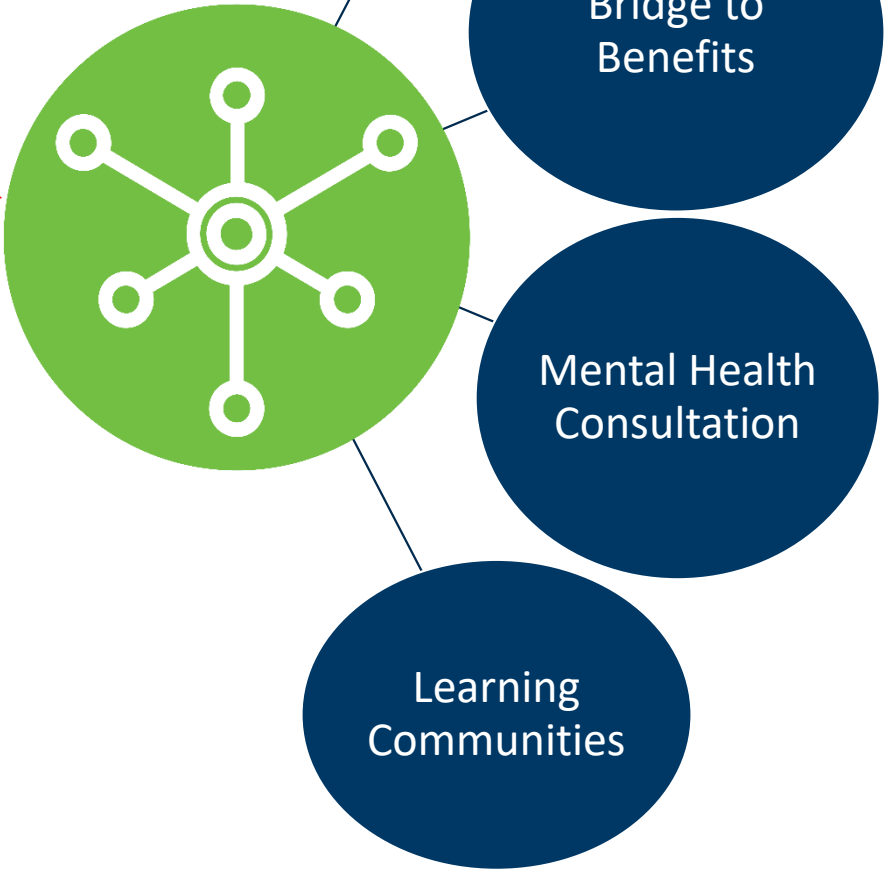
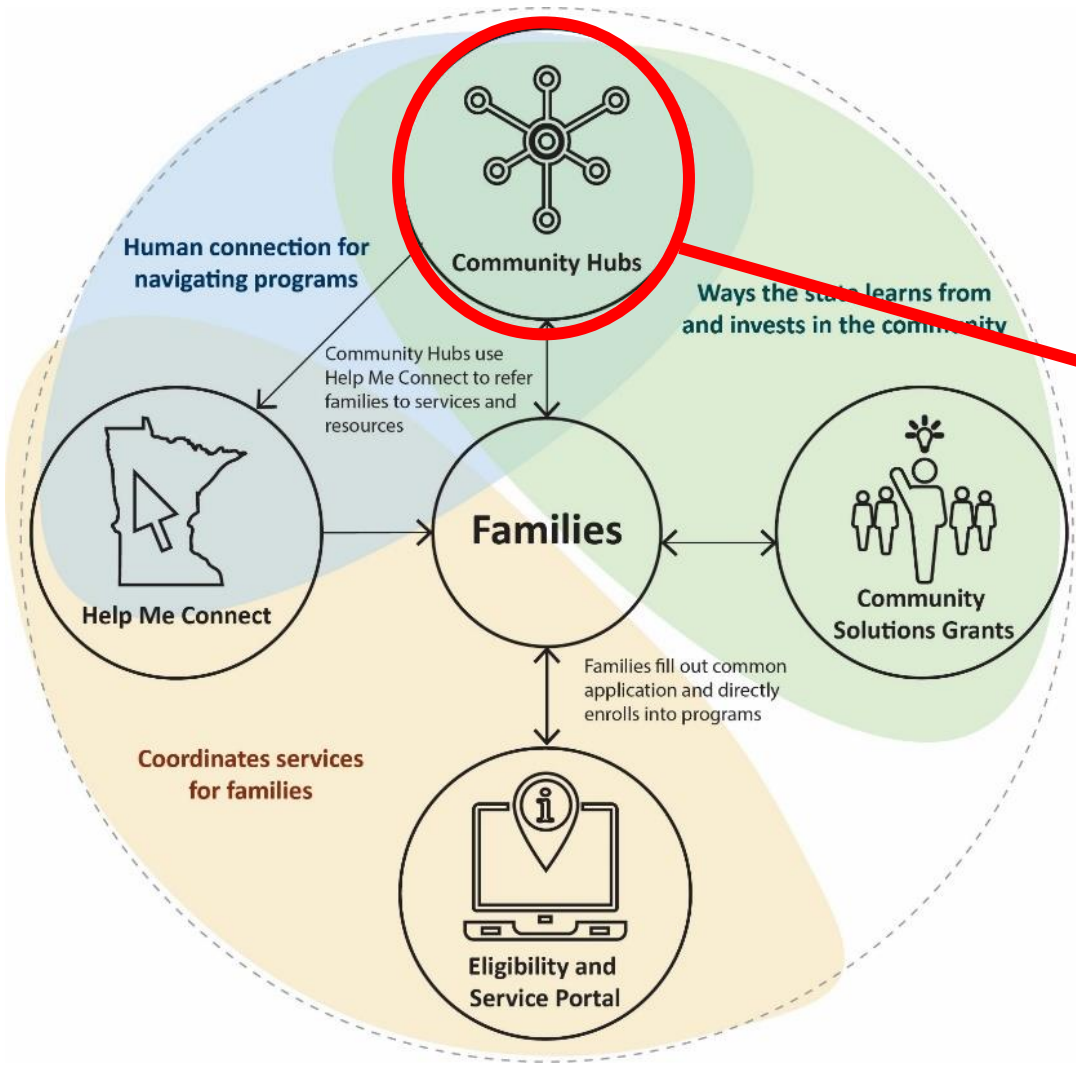
Pilot 4-10 local, cross-agency hubs in the state as a prevention strategy and in testing Help Me Connect.



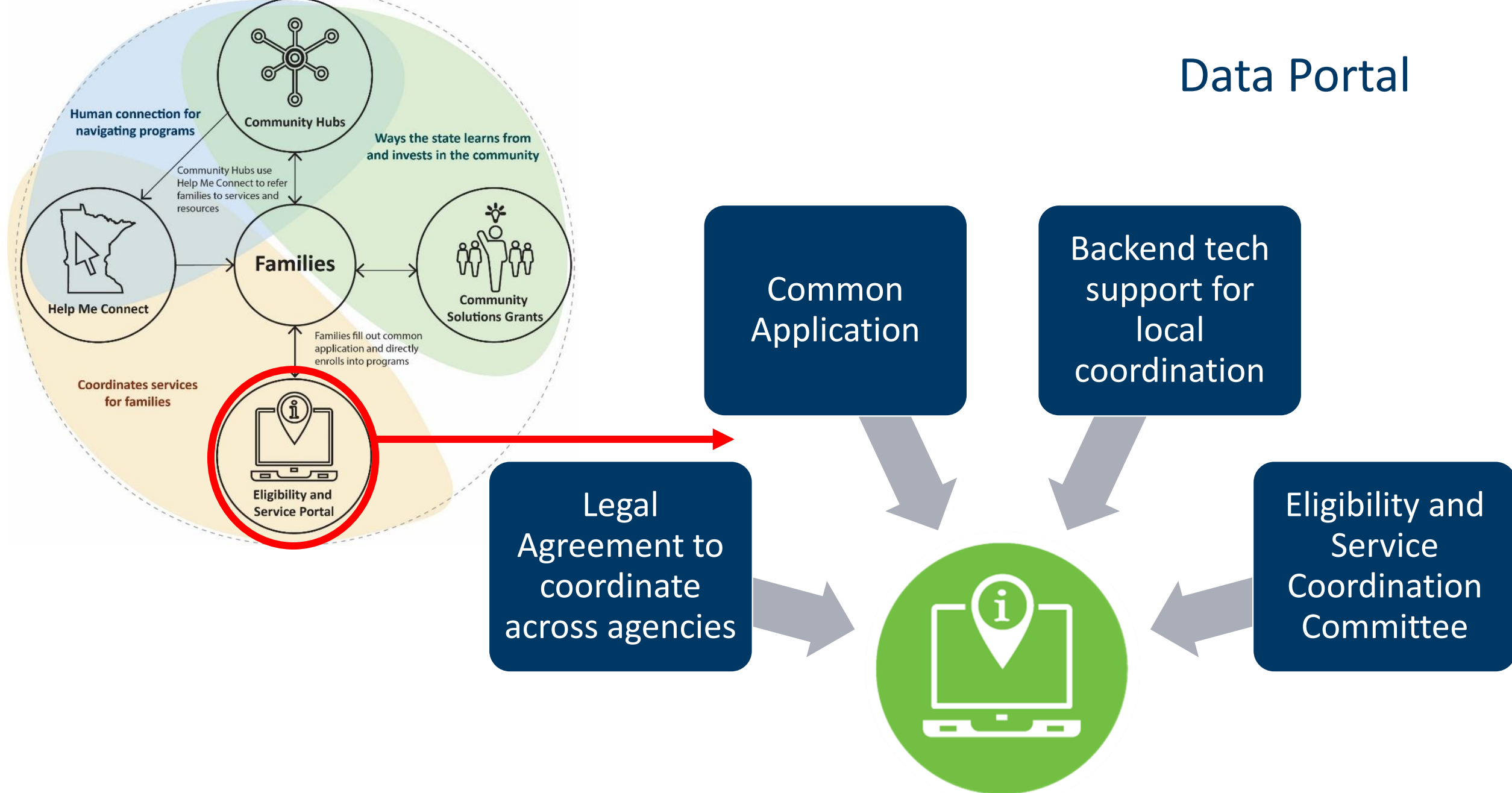
Invest in community solutions of community-identified challenges, prioritizing people of color and American Indians.



Community Hubs

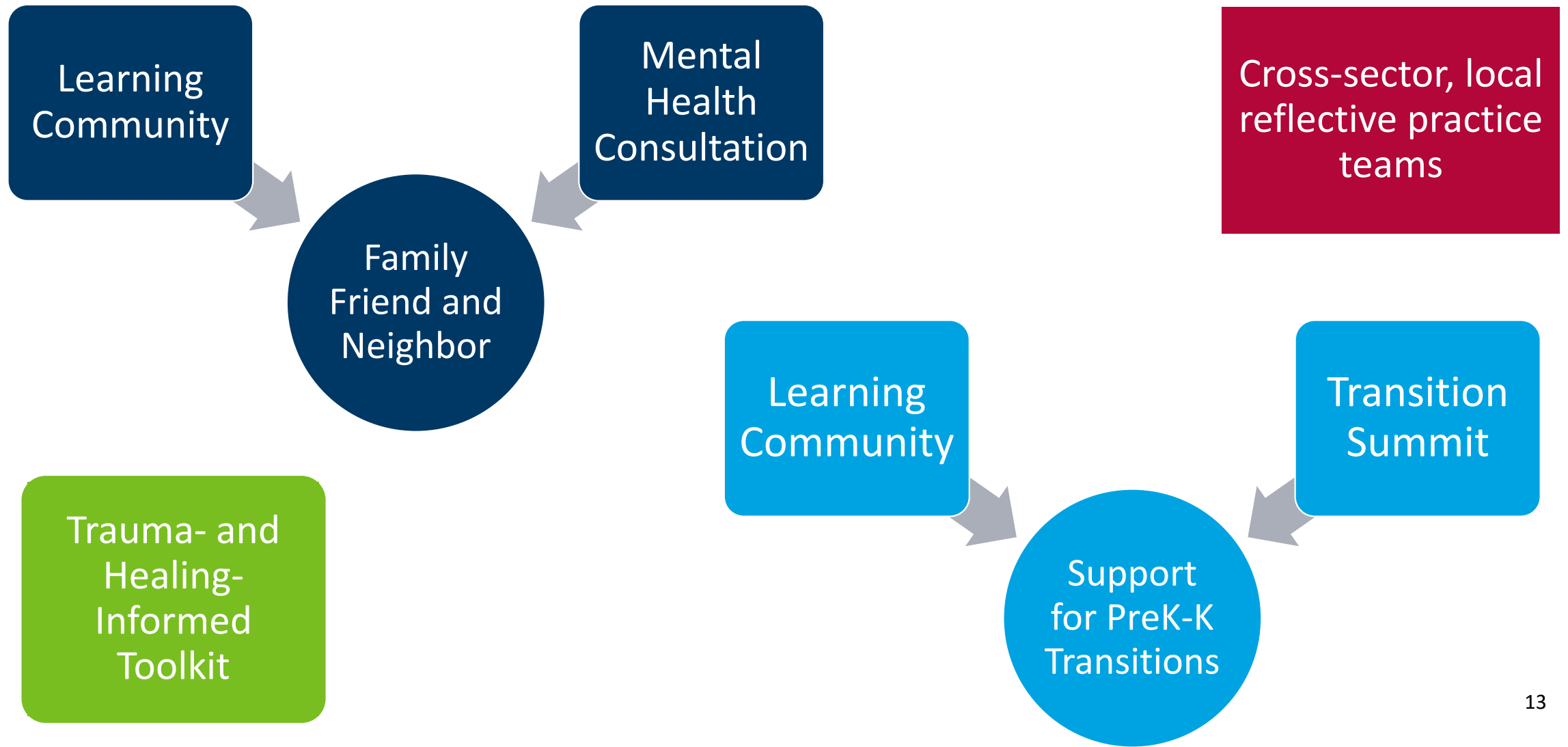


Data Portal



- Embedding of Knowledge and Competency Framework additions:
 - Cultural responsibility
 - Multilingual learners
 - Trauma-informed
- Advancing *Transforming the Early Childhood Workforce* recommendations
- Creating recommendations for the state on the early childhood business model

Additional Activities



Federal Technical Assistance Supports

Federal Technical Assistance Goals:

- Trauma and healing coaching for state staff
- Analysis of COVID waivers
- Mapping of eligibility criteria
- Workforce recruitment and retention

Additional Activities

- Participation in multi-state learning communities (listed on right)
- Fiscal map consultation



Bringing It All Together

- Needs Assessment & Strategic Plan Update in 2022
- Sustainability plan by December 31, 2021
- Community Engagement
- Tribal Nations Focus
- Evaluation



Guiding Principles: Racial Equity • Trauma-informed • Geographic Responsiveness • Everything is Connected • Whole Family • Agencies Working Together • Belonging

