



26th Avenue North Overlook

PROJECT DESCRIPTION:

This request is for \$3 million to create a critical linkage in the trail and bikeway system in North Minneapolis. 26th Avenue was reconstructed by the City of Minneapolis to create a multi-modal corridor beginning at Theodore Wirth Park and extending east nearly to the Mississippi River.

This request would leverage the city's project and private philanthropy by creating a river overlook and access point at the Mississippi River and a trail connection south to the Minneapolis Grand Rounds at Ole Olson Park. Trail users will be able to continue south into the already complete portion of the city-wide trail system that begins at Ole Olson Park.

FUNDING REQUEST:
\$3,000,000

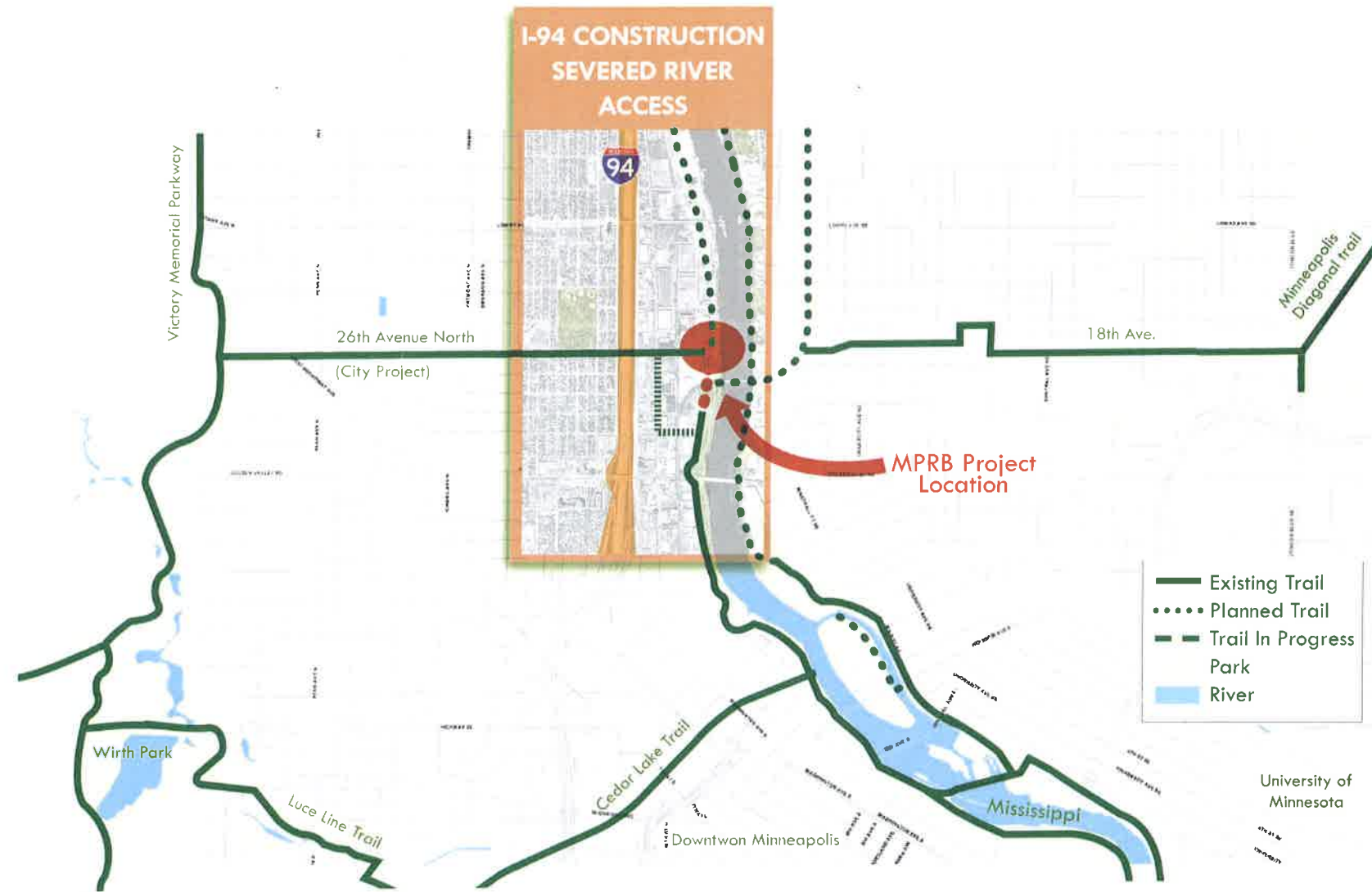
PARTNERS:
City of Minneapolis
Mississippi Watershed Mgmt. Organization
Minneapolis Parks Foundation

SCHEDULE:
Design: 2018/2019
Construction: 2019/2020

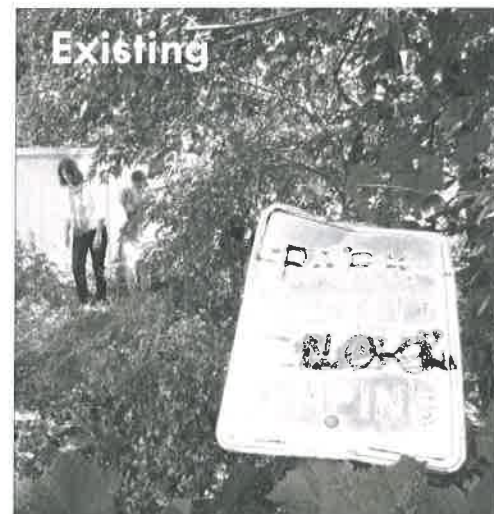
JOBS CREATED:
60

CONTACTS:
Minneapolis Park and Recreation Board
Brad Bourn, Park Board President
Chris Meyer, Legislative and Intergovernmental Chair
Al Bangoura, Superintendent
Michael Schroeder, Assistant Superintendent for Planning
612-230-6400

PROJECT PHASES:
Design & Construction



CONNECTING TO THE RIVER AND AN EVOLVING TRAIL SYSTEM



26th Avenue North Terminus at the River



Overlook at 26th Avenue North and Mississippi River Shoreline