



# The Greater MN Business Development Public Infrastructure (BDPI) Grant Program

*Providing the public infrastructure necessary for private investment*

## What is BDPI?

- The BDPI program provides grants to cities in Greater Minnesota of up to 50% of the capital costs for the public infrastructure necessary to expand economic growth, retain or create jobs, or increase the tax base (§ 116J.431).
- Greater Minnesota cities depend on the BDPI program to attract new businesses and create jobs in their communities.

## BDPI since 2010:

- 140 BDPI grants to Greater Minnesota cities and counties
- More than 5,000 jobs created and 9,500 retained
- More than \$70 million awarded

“As our state continues on its path to economic recovery from the COVID-19 pandemic, these infrastructure investments are a vital tool for future economic growth.

We urge the Minnesota Legislature to consider options to increase funding capacity for BDPI grants in the future”

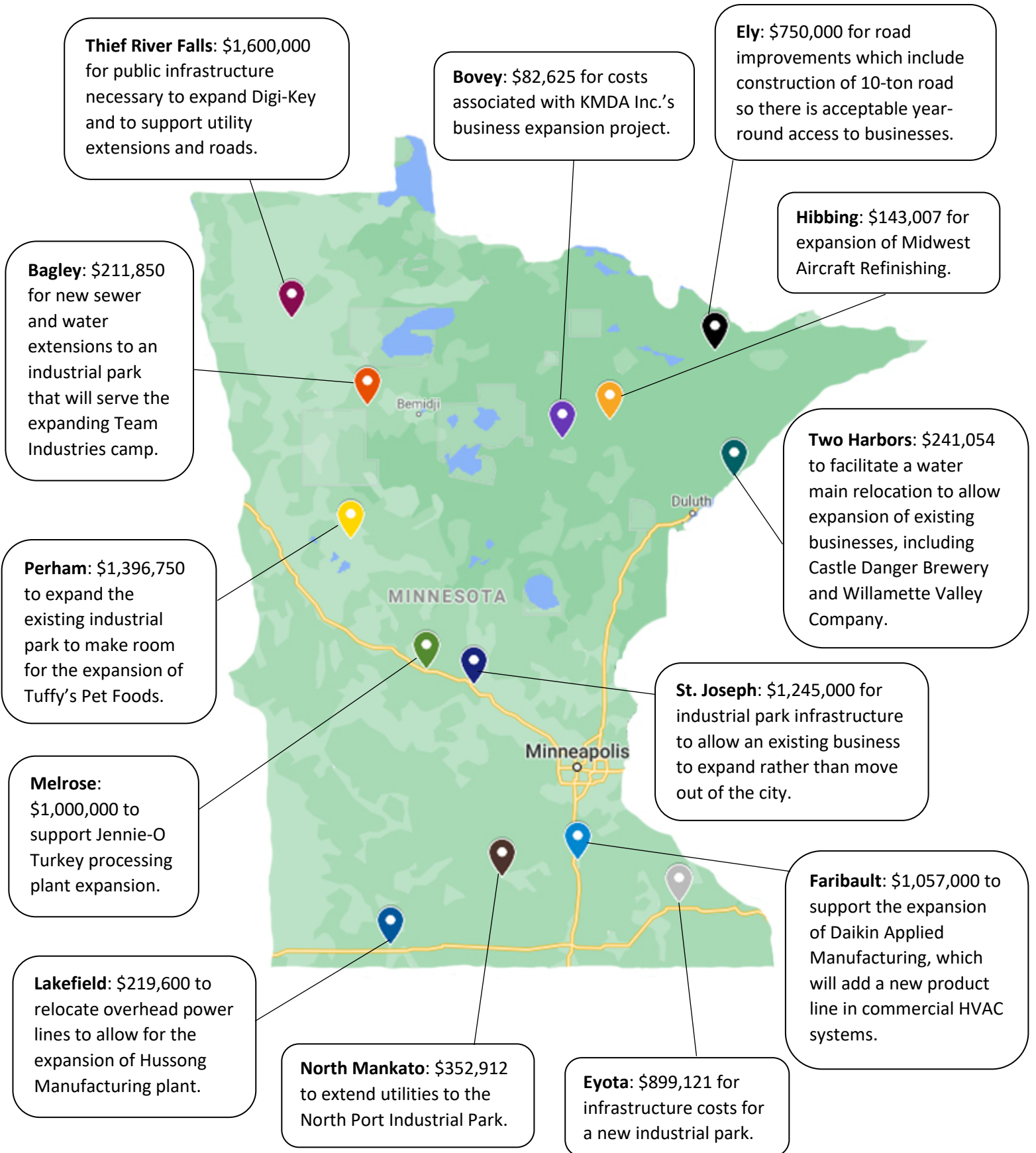
--- DEED Commissioner Steve Grove,  
International Falls Journal, 7/14/2020

## 2021 BDPI Proposal:

- \$20 million in General Obligation bonds
- Continue the program’s \$1.787 million general fund appropriation

**Support the Greater Minnesota BDPI program and help Greater Minnesota’s economy grow!**

## How have BDPI grants been used across the state?





# The BDPI Grant Program Has Helped More Than 125 Greater Minnesota Communities Grow

City	Year	Amount
Ada	2003	\$166,783
Aitkin County	2011	\$250,000
Albany	2005	\$515,309
Albert Lea	2006	\$250,000
Alexandria	2003	\$300,000
Arlington	2016	\$66,275
Arlington	2018	\$94,625
Audubon	2003	\$19,601
Austin	2003	\$380,000
Bagley	2011	\$204,134
Bagley	2019	\$211,600
Barnesville	2011	\$134,013
Becker	2010	\$250,000
Becker	2018	\$1,789,150
Belgrade	2003	\$136,913
Bemidji	2006	\$350,000
Bemidji	2008	\$250,000
Benson	2003	\$347,066
Bigfork	2008	\$190,223
Bigfork	2010	\$250,000
Blackduck	2010	\$71,825
Blooming Prairie	2014	\$215,829
Bovey	2006	\$192,000
Bovey	2016	\$94,920
Brainerd	2006	\$375,000
Brewster	2003	\$81,495
Brewster	2008	\$250,000
Brooten	2010	\$250,000
Brooten	2017	1,025,000
Browerville	2005	\$175,000
Cambridge	2011	\$224,884
Cambridge	2015	\$1,800,000
Cannon Falls	2005	\$250,000
Cannon Falls	2010	\$15,000
Carlton County	2016	\$162,500
Chatfield	2012	\$90,753
Chatfield	2017	\$177,103
Chisholm	2010	\$300,000

City	Year	Amount
Chokio	2010	\$206,700
Claremont	2016	\$500,000
Cloquet	2003	\$280,000
Cohasset	2005	\$352,000
Cohasset	2015	\$250,000
Cold Spring	2005	\$392,752
Cold Spring	2006	\$300,000
Cold Spring	2019	\$951,330
Coleraine	2006	\$173,435
Cottonwood	2005	\$140,769
Crookston	2010	\$75,000
Dawson	2010	\$500,000
Delano	2012	\$360,000
Detroit Lakes	2008	\$250,000
Detroit Lakes	2014	\$92,100
Dodge Center	2019	\$729,285
Duluth	2005	\$500,000
Duluth	2005	\$500,000
Duluth	2006	\$250,000
Duluth	2008	\$500,000
East Grand Forks	2008	\$245,000
Edgerton	2006	\$92,125
Elk River	2005	\$360,080
Elk River	2010	\$290,997
Elk River	2011	\$250,000
Ely	2015	\$250,000
Ely	2016	\$200,000
Eyota	2020	\$434,727
Fairmont	2019	\$434,075
Faribault	2003	\$86,002
Faribault	2005	\$278,425
Faribault	2011	\$349,528
Faribault	2016	\$843,957
Faribault	2018	\$1,057,000
Fergus Falls	2006	\$300,000
Fosston	2008	\$250,000
Freeport	2006	\$888,483
Gilbert	2011	\$244,750

City	Year	Amount
Grand Marais	2005	\$499,137
Grand Marais	2015	\$250,000
Grand Meadow	2015	\$310,000
Grand Rapids	2005	\$272,075
Grand Rapids	2008	\$250,000
Green Isle	2003	\$67,036
Hallock	2006	\$300,000
Hanover	2010	\$250,000
Harmony	2003	\$191,768
Harmony	2010	\$250,000
Harmony	2014	\$250,000
Harmony	2020	\$74,537
Hartland	2008	\$25,000
Hawley	2005	\$122,500
Hawley	2008	\$140,476
Hawley	2012	\$500,000
Hendricks	2018	\$153,500
Herman	2005	\$143,900
Heron Lake	2005	\$500,000
Hibbing	2006	\$250,000
Hibbing	2010	\$150,000
Hibbing	2016	\$158,897
Howard Lake	2016	\$208,600
Hutchinson	2008	\$250,000
Hutchinson	2010	\$250,000
Hutchinson	2019	\$353,563
International Falls	2020	\$349,011
Isanti	2010	\$11,000
Jackson	2005	\$351,281
Jackson	2010	\$153,286
Jackson	2018	\$49,328
Kenyon	2019	\$672,096
La Crescent	2006	\$1,400,000
La Prairie	2010	\$237,500
La Prairie	2015	\$175,000
Lake Crystal	2003	\$500,000
Lake Crystal	2006	\$257,548
Lakefield	2008	\$198,000



# The BDPI Grant Program Has Helped More Than 125 Greater Minnesota Communities Grow

City	Year	Amount
Lakefield	2019	\$219,600
Le Sueur	2003	\$358,127
Le Sueur	2006	\$250,000
Litchfield	2005	\$261,900
Litchfield	2010	\$107,151
Little Falls	2005	\$500,000
Long Prairie	2005	\$500,000
Long Prairie	2010	\$240,000
Luverne	2003	\$500,000
Luverne	2011	\$150,000
Luverne	2015	\$131,500
Luverne	2017	\$1,982,000
Lyle	2012	\$98,490
Mankato	2003	\$21,313
Mankato	2005	\$500,000
Mankato	2005	\$142,590
Mankato	2006	\$478,687
Mankato	2010	\$249,666
Marshall	2016	\$2,000,000
Mazeppa	2008	\$248,248
Melrose	2003	\$400,000
Melrose	2016	\$1,000,000
Milaca	2003	\$68,310
Mille Lacs County	2012	\$300,000
Montrose	2008	\$427,390
Moorhead	2003	\$500,000
Moorhead	2012	\$250,000
Mora	2006	\$56,995
Morris	2010	\$500,000
Motley	2010	\$250,000
Mountain Iron	2010	\$250,000
New Prague	2010	\$313,005
New Ulm	2008	\$200,681
North Branch	2003	\$387,787
North Branch	2005	\$304,222
North Branch	2019	\$400,575
North Branch	2010	\$1,000,000
N. Mankato	2008	\$250,000

City	Year	Amount
N. Mankato	2018	\$394,209
Olivia	2003	\$164,405
Otsego	2018	\$704,724
Osakis	2006	\$383,140
Owatonna	2014	\$421,447
Owatonna	2016	\$400,000
Owatonna	2020	\$175,624
Palisade	2011	\$120,000
Paynesville	2019	\$1,907,500
Pelican Rapids	2014	\$145,390
Pequot Lakes	2020	\$164,700
Perham	2003	\$122,725
Perham	2006	\$250,000
Perham	2010	\$500,000
Perham	2019	\$1,396,750
Pine City	2003	\$53,477
Pine River	2005	\$164,049
Pipestone	2005	\$499,907
Polk County	2007	\$175,737
Preston	2014	\$137,000
Preston	2014	\$350,000
Princeton	2020	\$310,000
Red Wing	2010	\$106,086
Redwood Falls	2005	\$250,000
Rice County	2012	\$326,218
Richmond	2008	\$121,799
Rockville	2005	\$152,734
Roseau	2003	\$378,000
Roseau	2008	\$300,000
Royalton	2017	\$227,014
Saint Charles	2010	\$500,000
Saint Cloud	2005	\$286,710
Saint Cloud	2010	\$500,000
Saint James	2003	\$209,600
Saint James	2008	\$207,108
Saint Joseph	2018	\$1,245,000
Silver Bay	2003	\$261,354
Sleepy Eye	2019	\$985,587
Spring Grove	2016	\$417,000

City	Year	Amount
Spring Valley	2019	608,966
Springfield	2005	\$486,239
St. Louis County	2011	\$285,000
Staples	2014	\$23,230
Stewart	2016	\$501,075
Stewartville	2011	\$337,688
Taylor Falls	2015	\$100,000
Taylor Falls	2016	\$100,000
Thief River Falls	2006	\$236,039
Thief River Falls	2008	\$200,000
Thief River Falls	2011	\$250,000
Tower	2006	\$249,980
Truman	2003	\$223,358
Two Harbors	2016	\$241,054
Villard	2015	\$250,000
Virginia	2006	\$300,000
Virginia	2010	\$200,000
Virginia	2010	\$300,000
Virginia	2014	\$200,000
Virginia	2015	\$250,000
Wadena	2011	\$350,000
Wadena	2018	\$688,945
Waseca	2020	\$621,290
Wanamingo	2003	\$222,375
Wanamingo	2014	\$250,000
Warren	2010	\$150,000
Wells	2005	\$41,072
Wells	2012	\$148,000
Windom	2011	\$549,540
Winona	2005	\$490,000
Winona	2006	\$300,000
Winona	2008	\$337,500
Winona	2010	\$94,881
Winsted	2020	\$95,811
Winthrop	2008	\$500,000
Worthington	2010	\$500,000
Wyoming	2003	\$1,000,000
Wyoming	2006	\$481,435
Zumbrota	2010	\$750,000