



Port of Duluth-Superior Cargoes

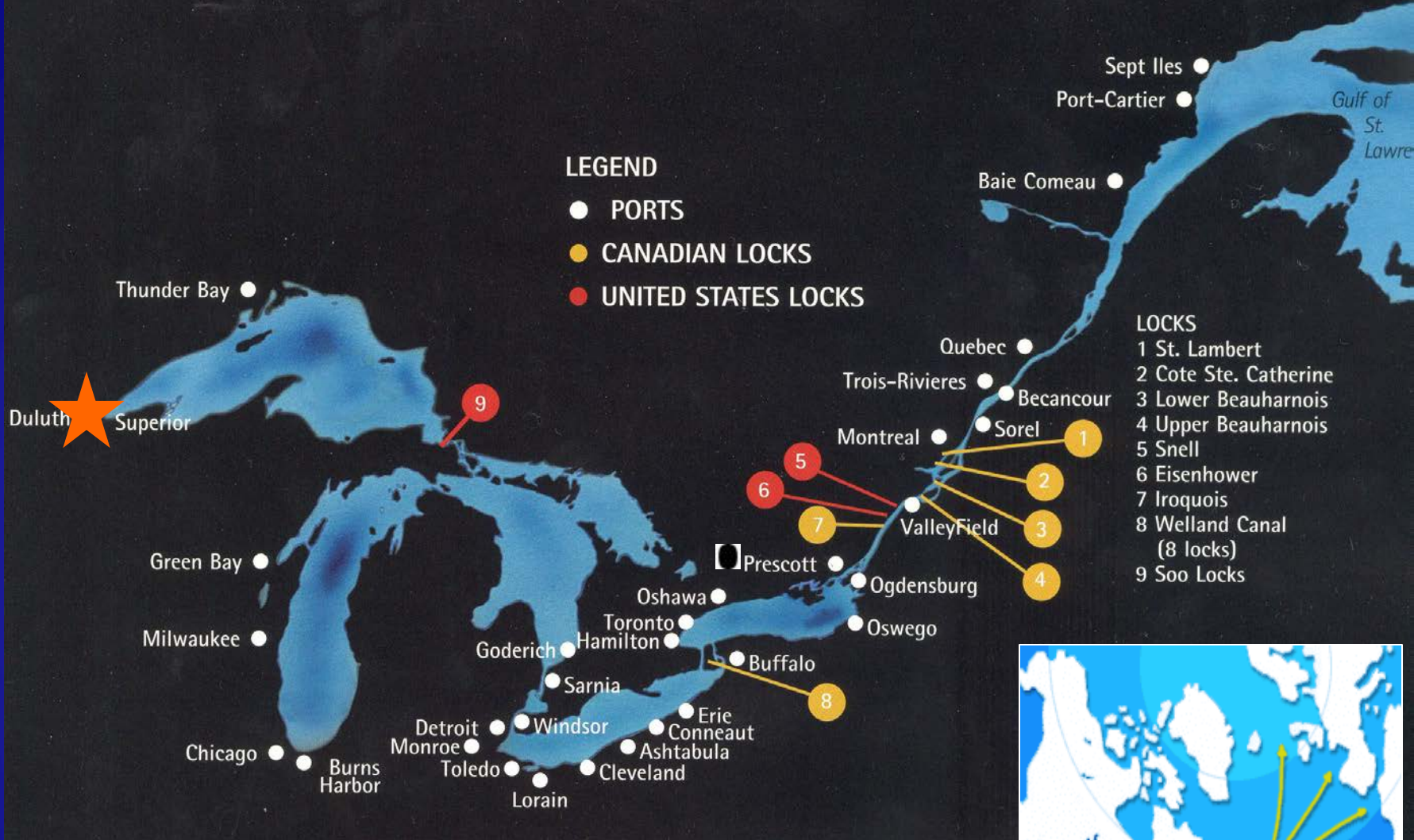
January 26, 2017



218.727.8525 | www.duluthport.com



**Port of
Duluth-Superior**
♦ ♦ ♦
**MID - AMERICA'S
GATEWAY**



Duluth-Superior to/from:

Northern Europe

15 days

Spain

15 days

Italy/North Africa

18 days



Duluth

Superior

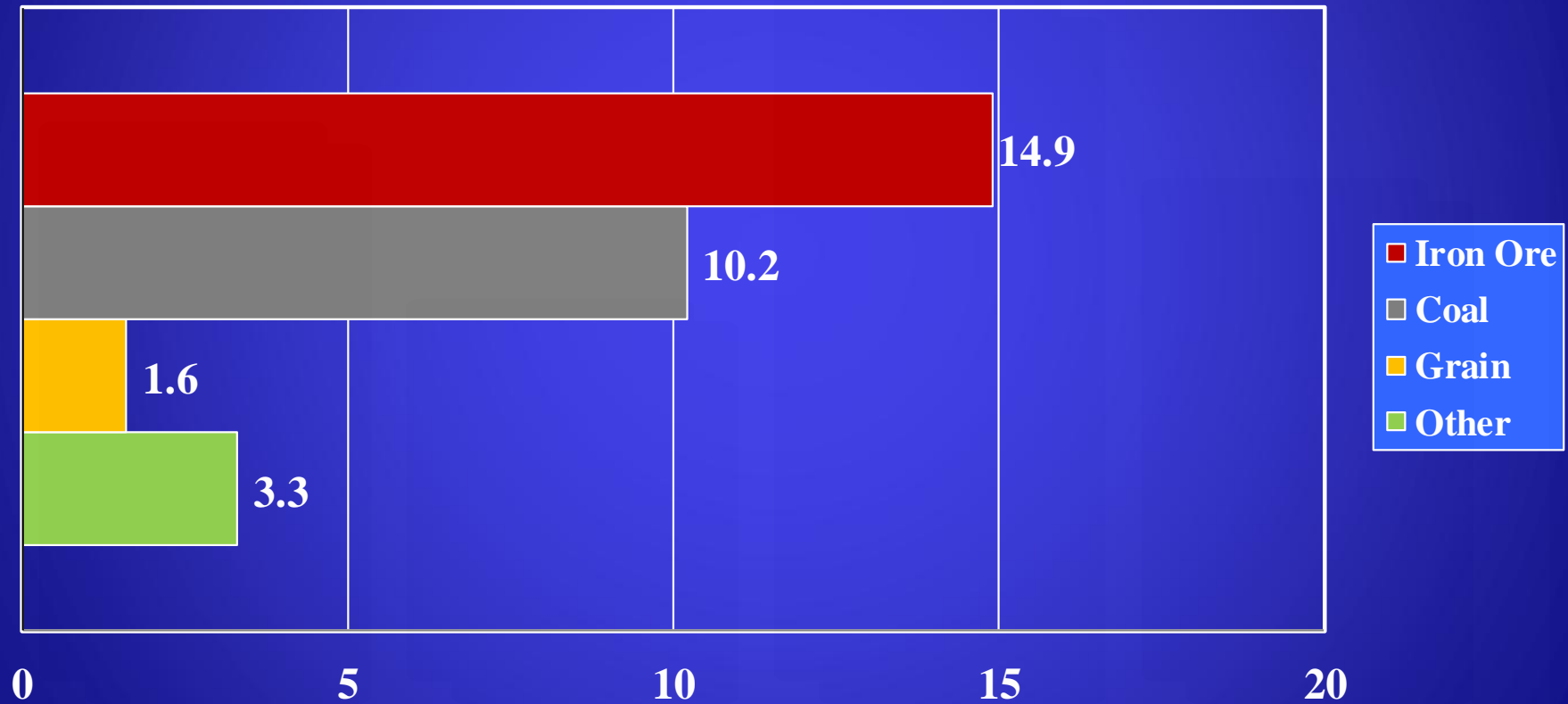
The Port is a Regional Asset
20 active bulk cargo docks;
1 breakbulk terminal



Cargo Projection 2016

Total tonnage: 30.1 million st

Iron Ore 14.9M st, Coal 10.2M st, Grain 1.6M st, Other 3.3M st





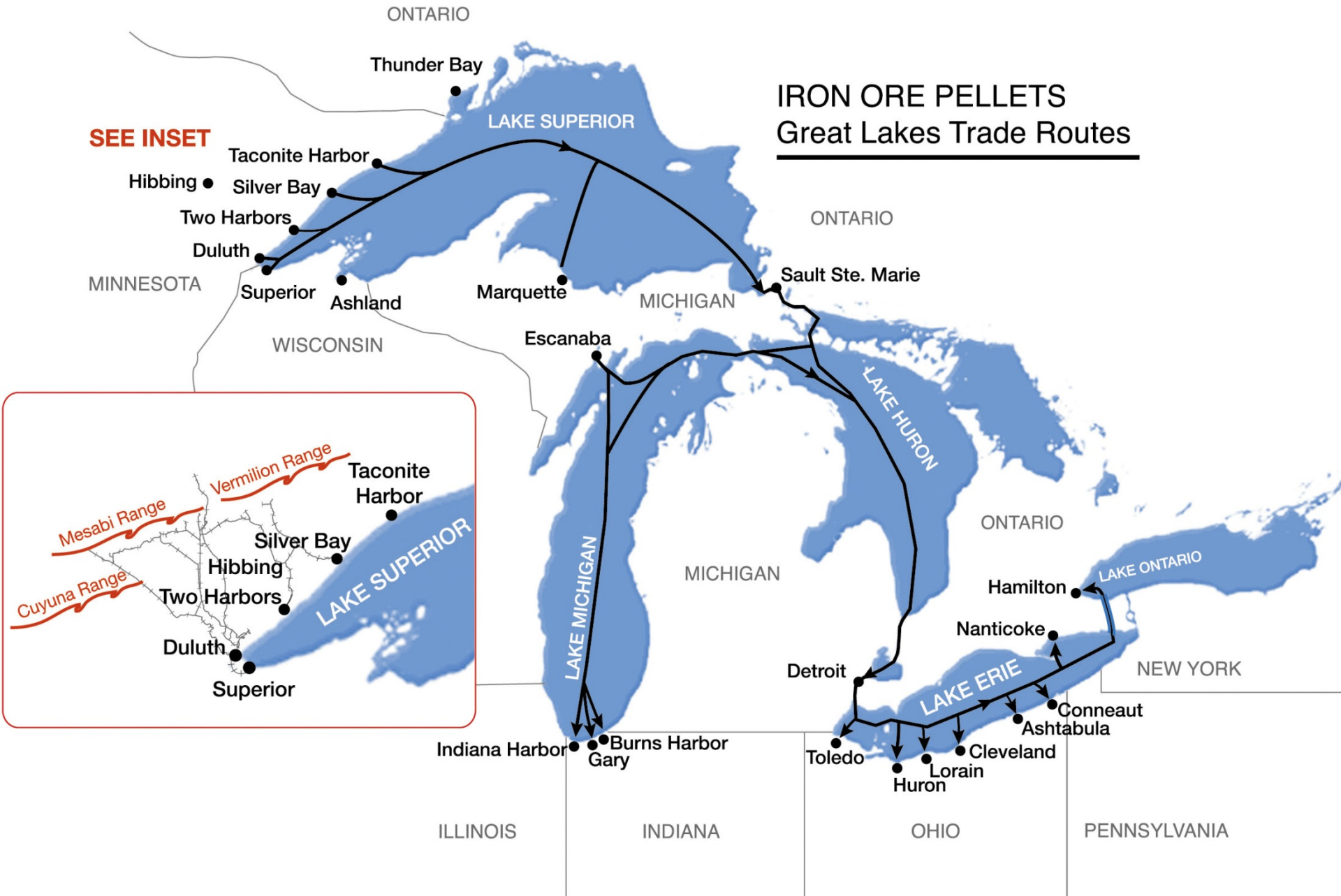
Dry-bulk commodities handled at the Port's 20 commercial docks



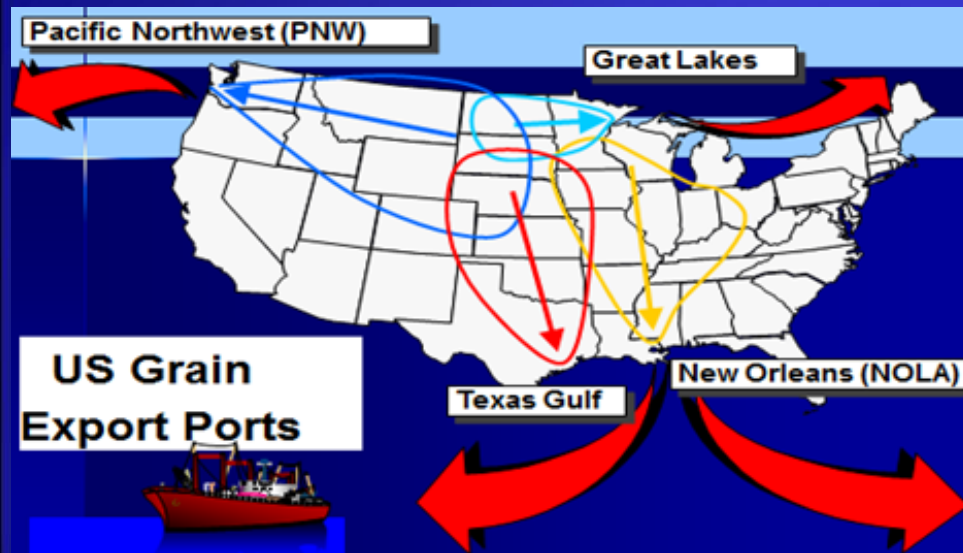


IRON ORE PELLETS Great Lakes Trade Routes

SEE INSET



Grain - Current Market

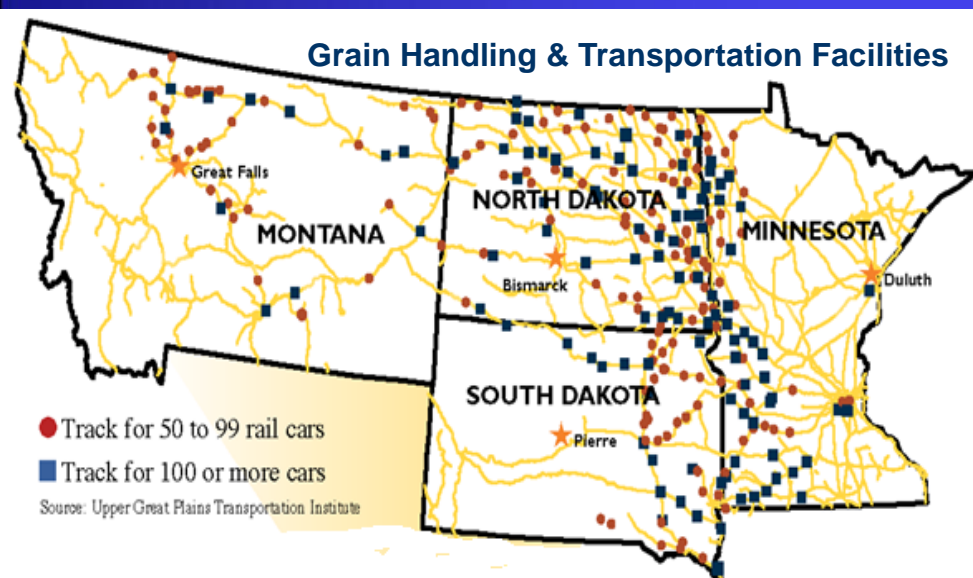


Location:

- Located on the edge of significant Red Spring Wheat, Durum Wheat, Soybean, and Sugar Beet acreage/production
- Excellent rail connections to the US & Canadian Agricultural Heartland

Current Market:

- Grain is fourth in total Port tonnage, averaging nearly 1.4 million MT per year, but dominates the overseas trade
- 80% of Duluth-Superior's grain is exported via the St. Lawrence Seaway, 20% Domestic Millers



Grains & Destinations

Top 5 Grains:

- Spring Wheat
- Durum Wheat
- Sugar Beet Pulp Pellets
- Canola
- Flax Seed

Top 10 Destinations:

- Canada (Transshipment)
- Italy
- Algeria
- Belgium
- Spain
- Netherlands
- Tunisia
- United Kingdom
- Morocco
- Portugal



Clure Public Marine Terminal



Outdoor Operations Area ~ 40 Acres
Indoor Warehouse Space ~ 400,000+ sq ft



Paper Industry – Northern MN



Kaolin Clay
Discharge at
Port Authority's
Clure Public
Marine Terminal

Paper Industry – Northern MN

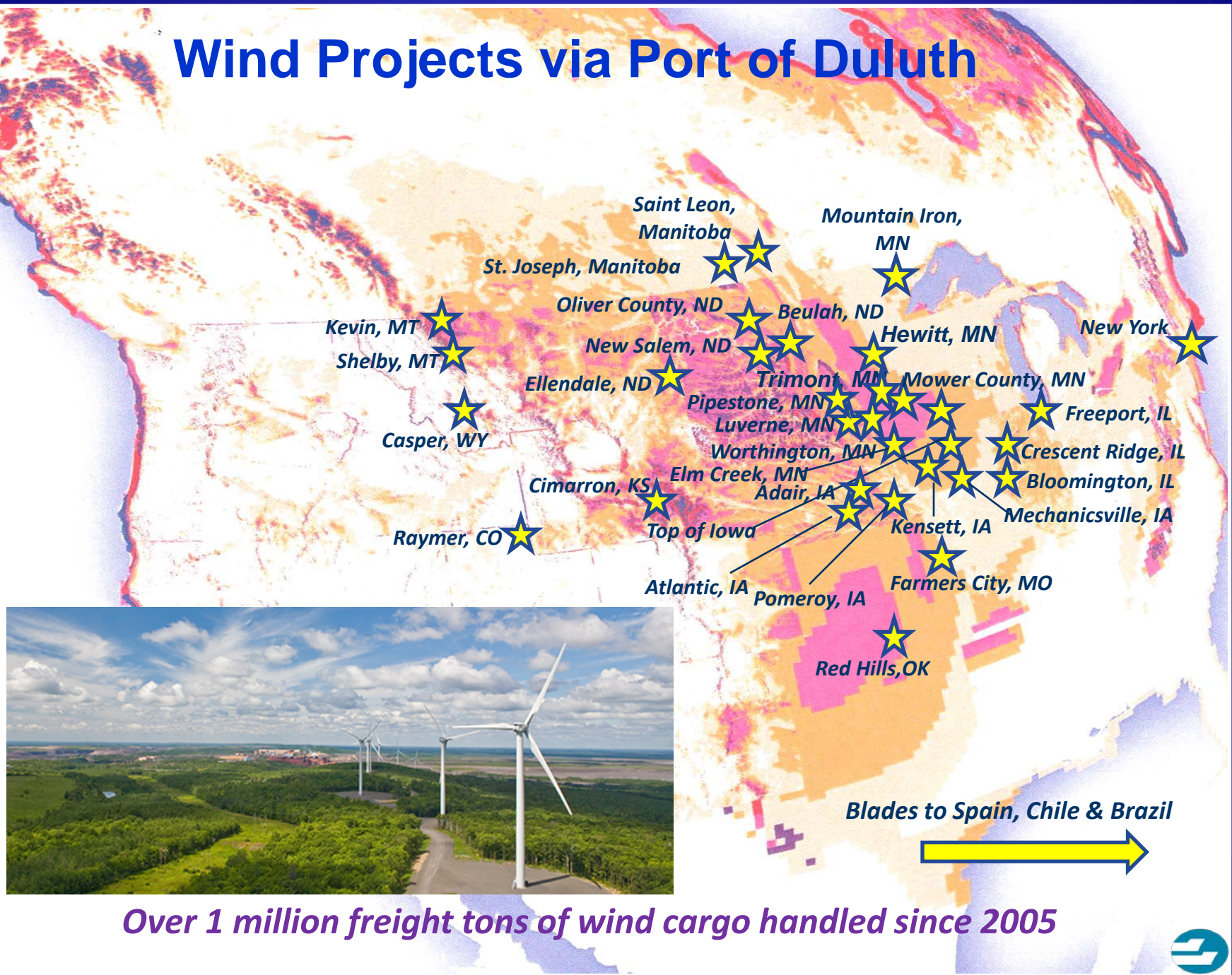


**Raw Materials &
Finished Craft**

Wind Project Cargo



Wind Projects via Port of Duluth



Over 1 million freight tons of wind cargo handled since 2005

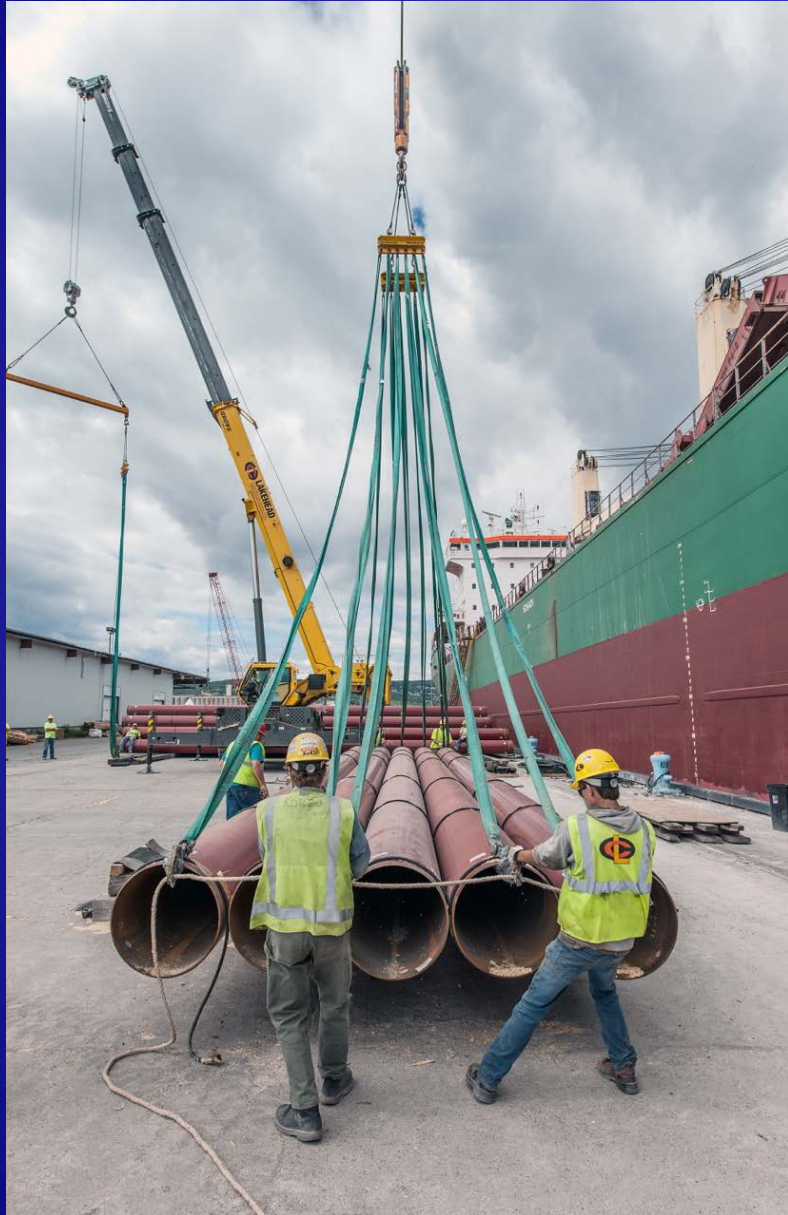




Dimensional Freight



Heavy Lift/Project Cargo



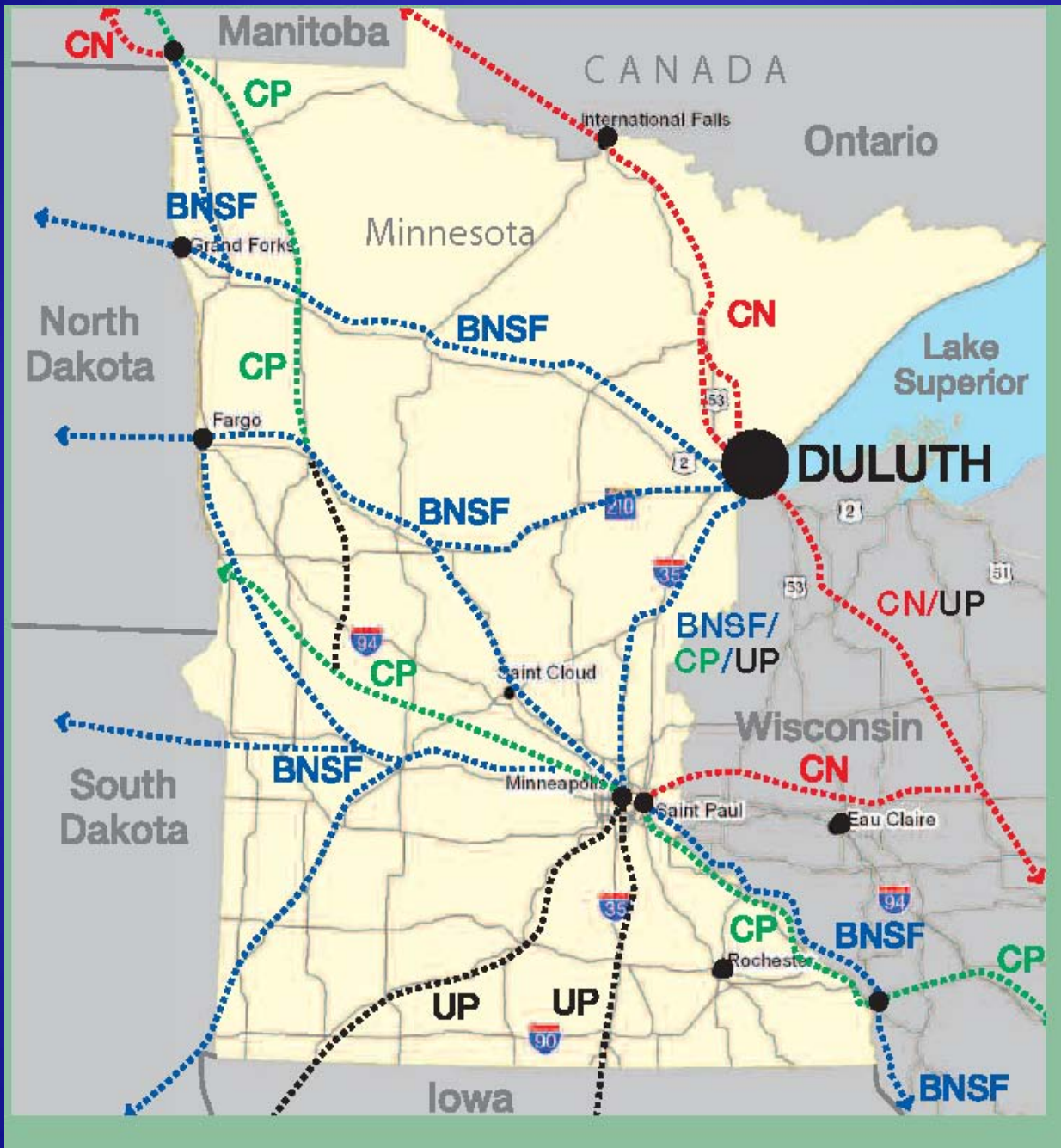
Heavy Lift Cargo





Primary Trade Lanes for Breakbulk Cargo through Port of Duluth





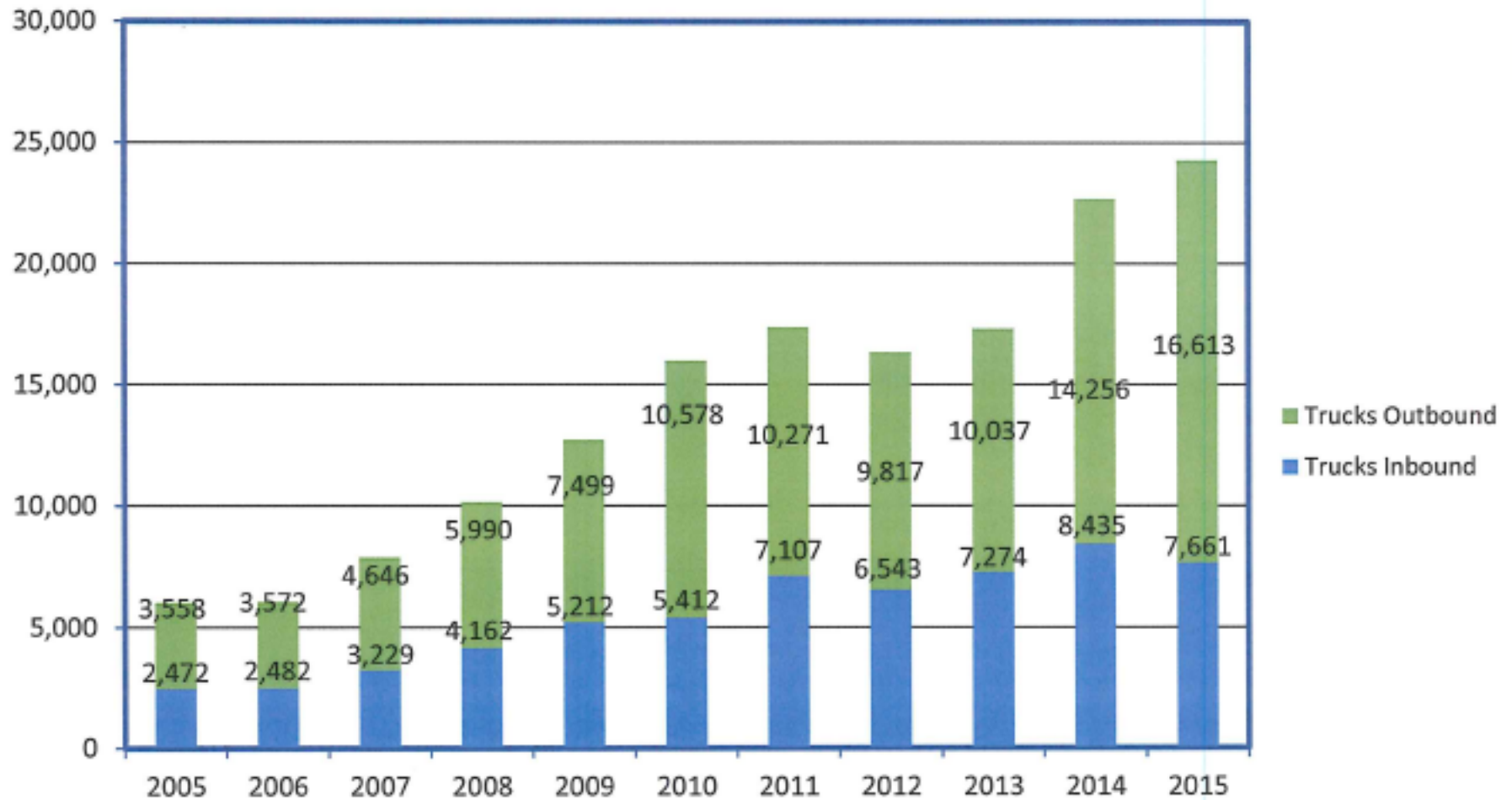
Connectivity:
 A Port is not a
 Port without
 Road and Rail

Primary
 Highway
 and
 Class I Railway
 Corridors
 serving the
 Port of
 Duluth-Superior



Duluth Clure Public Marine Terminal

Historical Truck Volume



Source: Lake Superior Warehousing Co., Inc.



Project Cargo Challenges



MnDOT FASTLANE Grant Application - December 2016

Twin Ports Interchange

\$120 M Project

\$\$45 M Grant Request

Driven by Freight through the Twin Ports



Component 1
Replace Garfield Avenue bridges on I-535

Component 4
Reconstruct I-35 from 22nd Avenue to Garfield Avenue on grade

Component 7
Reconstruct intersection of Old Piedmont Avenue and West 1st Street

Component 2

Component 5

Component 8
Install ITS wayfinding system

Component 5

Component 6

Component 7

Component 4

Component 2

Component 3

St. Louis Bay

Lake Superior

Clure Public Terminal

CN Intermodal Facility

Component 1

LWSSD

Coffee Creek
Miller Creek

Lincoln Park

53

INTERSTATE 35

INTERSTATE 535

INTERSTATE 35

W 1st Street

Old Piedmont Ave

Garfield Ave

Courtland St

N 27th Ave West

Exhibit II-1 *Economic Impacts of the Port of Duluth-Superior*

Jobs	
Direct	2,985
Induced	5,755
Indirect	2,770
Total	11,510
Personal Income	
Direct (1,000)	\$142,662
Re-spending / Local consumption (1,000)	\$325,854
Indirect (1,000)	\$77,186
Total (1,000)	\$545,701
Business Revenue (1,000)	\$1,489,809
Local Purchases (1,000)	\$146,280
State Taxes (1,000)	\$58,117
Federal Taxes (1,000)	\$98,226
Total Taxes (1,000)	\$156,343

Note: Totals may not add due to rounding

SHIPPING

via the Twin Ports

11,510 JOBS



\$546 million in WAGES



\$1.5 billion in Business Revenue





Deb DeLuca
Director of Government and Environmental Affairs
218-727-8525; ddeluca@duluthport.com



218.727.8525 | www.duluthport.com