

STAY SAFE MN

MDH COVID-19 Vaccine Update

Commissioner Jan Malcolm
House Health Finance and Policy

The Two Vaccines

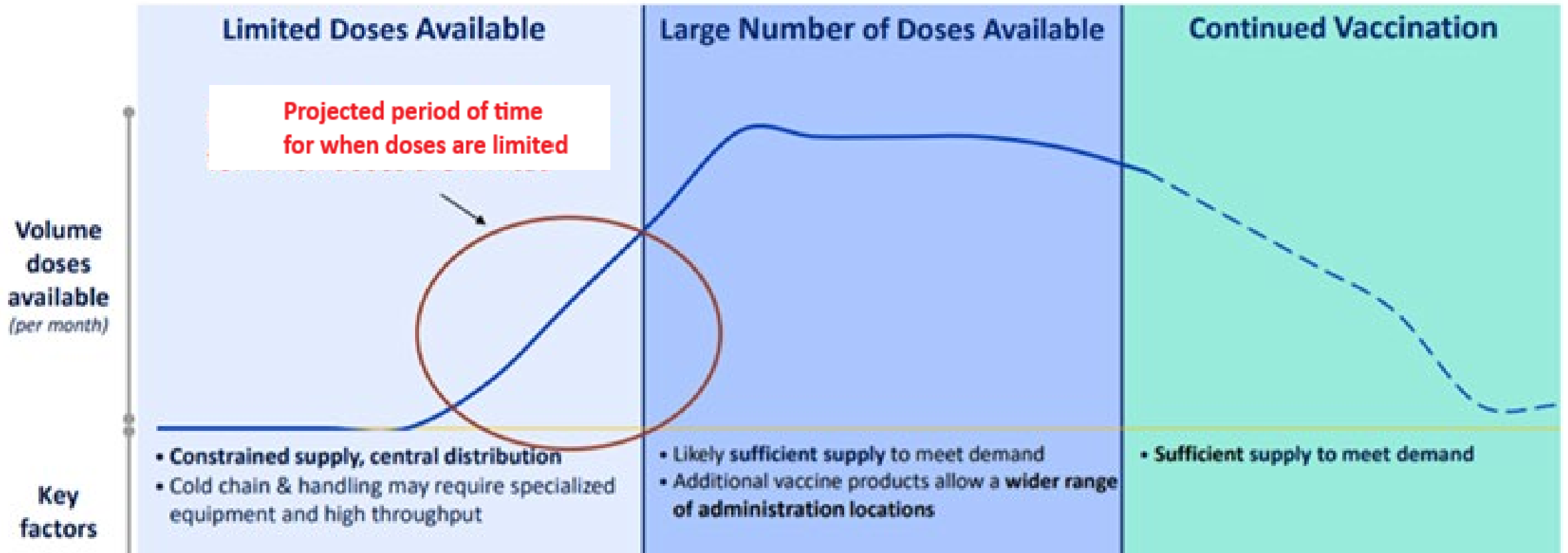
- Pfizer
 - Approved by FDA Dec. 11, 2020
 - Must be stored at -80°C
 - Must be shipped in 975 doses increments
 - 21 days between first and second doses
- Moderna
 - Approved by FDA Dec. 18, 2020
 - Can be shipped at more normal freezer temperatures
 - Minimum shipment 100 doses
 - 28 days between first and second doses



State's Role in Vaccination

- Facilitation and oversight of timely administration of doses allocated to Minnesota
- Direct the federal government where in Minnesota to send vaccine
- Ensure safe administration by vaccine providers in Minnesota

Phased Approach to Vaccination



Goals

- 80%+ of Minnesotans are vaccinated
- Vaccinate Minnesotans as fast as the supply of COVID-19 vaccines will allow
- Always ensure we get the maximum allocation possible from the federal government
- Vaccinate for greatest immediate health impact
- Consider equity in allocation, distribution and vaccination decisions

Vaccinator Ecosystem

Primary Care Clinics

- Established patient relationships and medical records
- Vaccine infrastructure in place
- Established relationship with their workforce

Community Clinics

- Established patient relationships and medical records
- Serves focus communities
- Vaccine infrastructure in place

Pharmacies

- Convenient locations
- Established patient relationships; some without a medical home
- Vaccine infrastructure in place

Vaccinator Ecosystem

Local Public Health

- Established community connections with employers, schools, congregate living facilities and others
- Traditionally provides services for the underserved
- Vaccine infrastructure in place
- Ability to hold closed and open points of dispensing; ability to be mobile

Tribal Nations

- Each Tribal Nation has its own plan to serve enrolled members, people living on reservation and employees of the Tribe
- Vaccine infrastructure in place

State of Minnesota

- Resources and infrastructure to provide fast, barrier free vaccination, coordinate w/feds
- Ability to hold closed and open points of dispensing
- Established relationship with employees and people in state-run congregate living facilities

VACCINES ARE ORDERED



TUE

Vaccines are allocated by the Centers for Disease Control and Prevention (CDC) on Tuesdays.



WED

Minnesota works with regional health care coalitions and providers to determine how many doses are needed, and where they should go.



THU

Minnesota places orders for doses on Thursdays and tells the federal government where they need to be sent.



The federal government requires each state to wait 48 hours after allocation to order vaccines.

VACCINES ARE SHIPPED



Shipping takes between 1-5 days.



The federal government ships Minnesota's vaccine order to our hubs and local public health facilities.

Hubs:

- Reallocate and ship vaccine doses to smaller hospitals and clinics around the state.
- Carefully administer their own allotment of vaccine to their staff using a staggered approach.
- Report vaccine data back to MDH...
...all while continuing to care for sick patients

Smaller clinics:

- Carefully administer their allotment of vaccine.
- Report vaccine data back to MDH...
...all while continuing to care for sick patients.

VACCINES ARE ADMINISTERED AND DOSES ARE REPORTED



Providers giving vaccines report their dose numbers to the Minnesota Department of Health (MDH).

MDH verifies, processes, and packages data on vaccine doses administered for reporting.



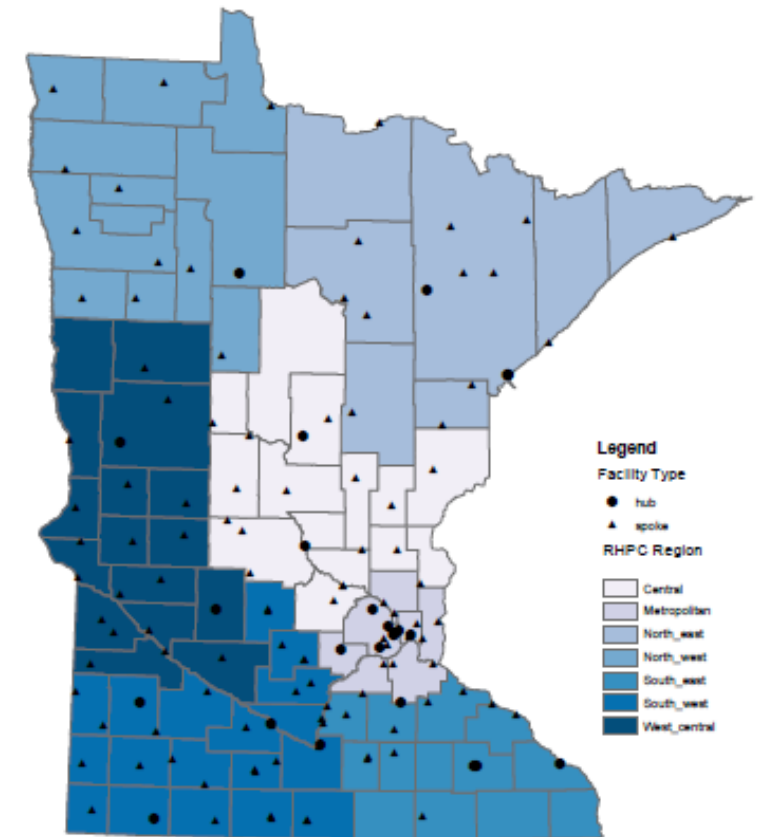
Vaccine administration data is updated daily.



Hub and Spoke Distribution Model

- Vaccine is delivered directly to hubs
- 25 hubs, 118 spokes across regional health care coalitions
- Local public health directly receives vaccine

Locations of Hub and Spoke Facilities for COVID-19 Vaccine Distribution in Minnesota



Federal Pharmacy Partnership

- Had to reserve doses in advance before the program could begin, although federal program will not administer them all at once
- Pharmacies will visit each facility three times
- Pharmacies:
 - Order vaccines and associated supplies
 - Ensure cold chain management for vaccine
 - Provide on-site administration of vaccine
 - Report required vaccination data to the local, state, and federal jurisdictions (Do not provide break out by facility, staff/residents to state)

U.S. govt partners with pharmacy chains to increase COVID-19 vaccine access

CONTRIBUTOR
Minalika Roy — Reuters

PUBLISHED
NOV 12, 2020 2:33PM EST



1a Status Update: Long-Term Care

- Skilled Nursing Facilities (n=369) – First doses complete, inventory includes second doses
- Assisted Living Facilities (n=2000+) – In progress since last week, projected completion in early February

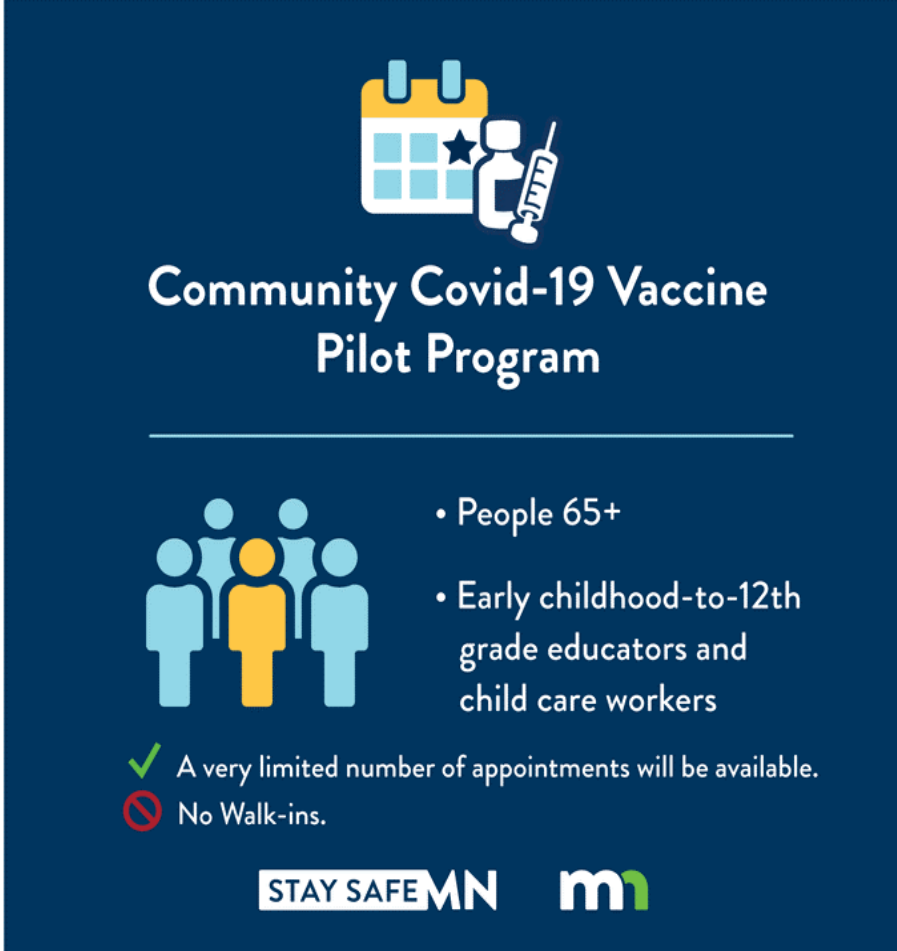
1a Status Update: Health Care Workers

- Priority 1 and 2 – Substantially complete
- Priority 3 – In progress, providers and local public health leading vaccination
- Goal for first doses scheduled in coming weeks for remaining health care workers

Community Vaccine Pilot Program

STAY SAFE MN

- 9 pilot sites across Minnesota
- Sites will serve:
 - Public sign-up process: Adults age 65 and older
 - Closed sign-up process: Prekindergarten through grade 12 educators, staff, and child care workers.
- Foundation for possible mass vaccination clinics after federal government increases vaccine supply
- Providers retain key role in vaccination



The graphic features a dark blue background with white and yellow text and icons. At the top, there is an icon of a calendar with a star, a vaccine vial, and a syringe. Below this is the title 'Community Covid-19 Vaccine Pilot Program'. A horizontal line separates the title from the target audience information. On the left, there is an icon of five stylized human figures, with one in the center colored yellow and the others in light blue. To the right of this icon is a list of target groups. Below the list are two items: a green checkmark icon followed by the text 'A very limited number of appointments will be available.' and a red 'no' symbol icon followed by the text 'No Walk-ins.'. At the bottom, there are two logos: 'STAY SAFE MN' and the 'mi' logo.

Community Covid-19 Vaccine Pilot Program

- People 65+
- Early childhood-to-12th grade educators and child care workers

✓ A very limited number of appointments will be available.
⊘ No Walk-ins.

STAY SAFE MN mi

Public Sign-Up for 65+ Appointments

- First sign-ups collected yesterday by phone and at mn.gov/vaccine
- As expected, demand far outpaced supply
- Over 1 million website hits for nearly 6000 appointments this week
- Appointments and wait lists are full for this week
- **More appointments will be listed at noon on Tuesday, January 26**
- Selected educators and child care workers will be notified by their employer

Challenges and Uncertainties

- Health care workers choose when to get vaccine, need to stagger doses, etc. impacts pace of doses administered
- Program serving majority of long term care facilities run/oversight by federal government, limited view into it
- Future supply projections and new federal plans
- Complexity at the local level: Priority to not waste doses leads to some variation
- Continuing to learn about vaccine hesitancy

Additional Vaccines on the Horizon

- Johnson & Johnson (Janssen)
 - Single dose
 - Preliminary phase 3 results expected in January
 - Possible approval in February if shown effective
- University of Oxford-AstraZeneca
 - 2 doses, 28 days apart
 - Status: Phase 3 clinical trial

Vaccine Dashboard

STAY SAFE MN



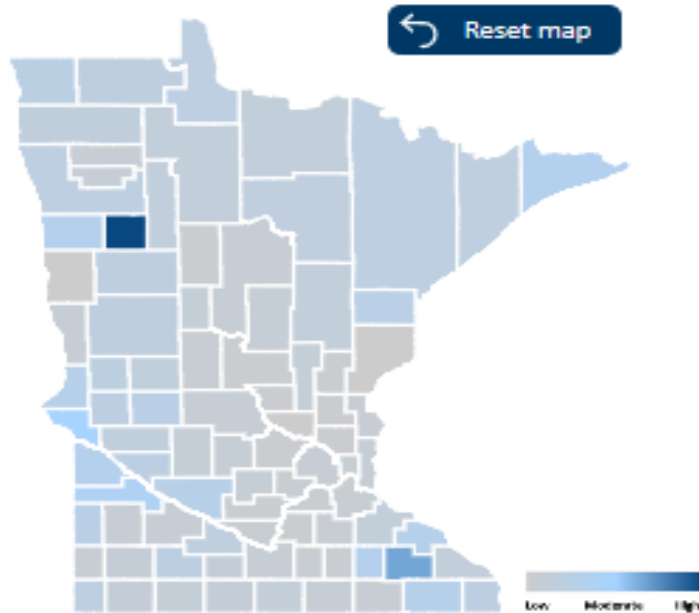
COVID-19 Vaccine Summary

Summary

Who's Getting Vaccinated

Distribution

Vaccines Administered



Statewide Data

Click on a county to narrow results. Data reported as of 1/17/2021.



People with at least one vaccine dose

200,840



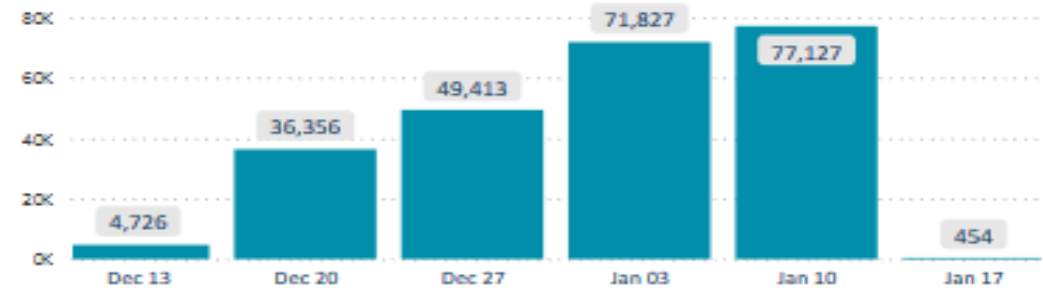
People with completed vaccine series

38,521

Vaccine Doses Administered

Weekly

Daily



Total doses promised from CDC

626,925

Updated every Friday



Doses shipped to Minnesota providers

479,525



Doses shipped for CDC long-term care vaccination program

117,100

This section last updated 1/19/2021



Percentage of doses used

40.2%

Vaccine Dashboard



Who's getting vaccinated

Summary

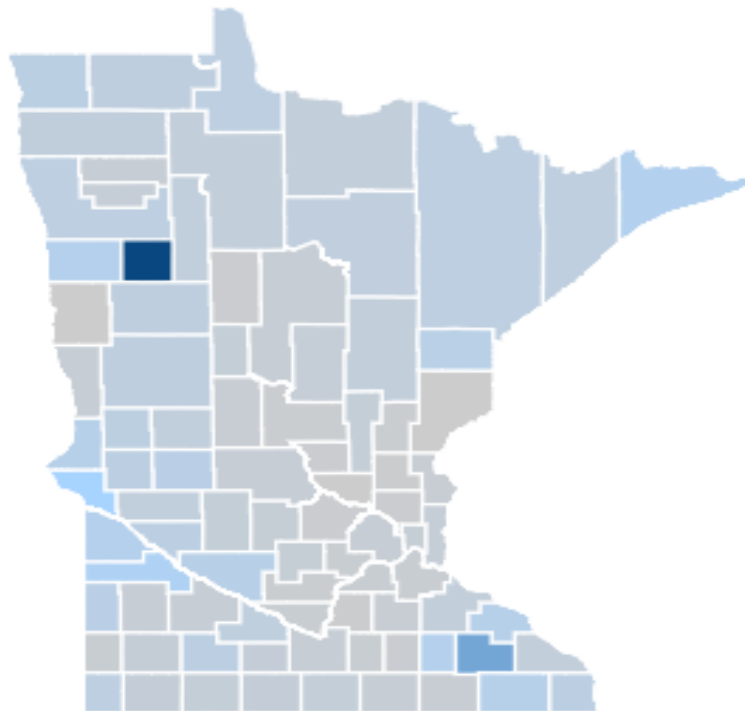
Who's Getting Vaccinated

Distribution

Vaccines Administered

County-level data represents percent of the county population who have at least one dose of a vaccine.

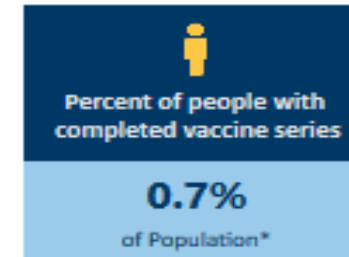
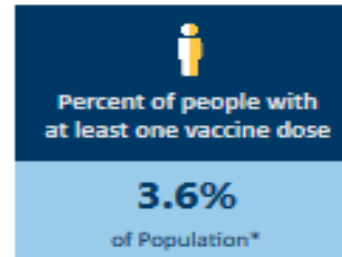
Reset map



Low Moderate High

Statewide Data

Click on a county to narrow results. Data reported as of 1/17/2021.



*Population is state or county based on selection.

Age group	% People with at least one vaccine dose	
16-17	0.1%	257
18-49	53.8%	108,097
50-64	27.8%	55,813
65+	18.3%	36,669
Unknown/Missing	0.0%	4

Gender	% People with at least one vaccine dose	
Female	68.2%	136,958
Male	30.8%	61,881
Other	0.0%	5
Unknown/Missing	1.0%	1,999

Vaccine Dashboard



Distribution

Summary

Who's Getting Vaccinated

Distribution

Vaccines Administered



Doses shipped to Minnesota providers

479,525



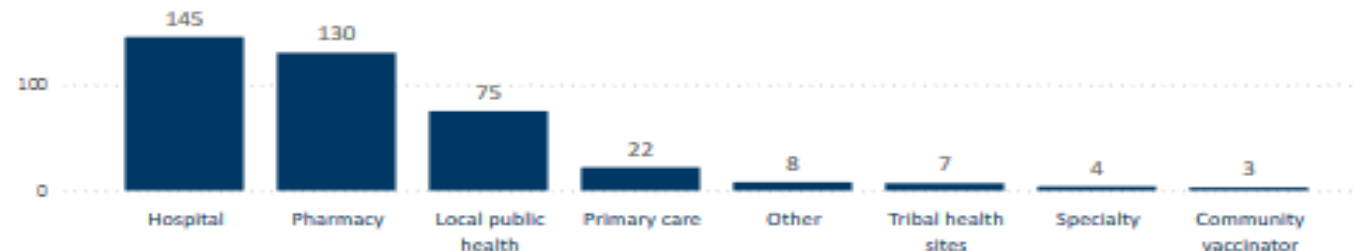
Doses shipped for CDC long-term care vaccination program

117,100

Product	Doses shipped to Minnesota providers	Doses shipped for CDC long-term care vaccination program	Total
Moderna	133,400	117,100	250,500
Pfizer	346,125	0	346,125
Total	479,525	117,100	596,625

Total provider sites receiving vaccines

394



This section last updated:
1/19/2021

Vaccine Dashboard



Vaccines Administered

Summary

Who's Getting Vaccinated

Distribution

Vaccines Administered

Select Filter:

Provider type

All

Vaccine product

All



Total vaccine doses administered

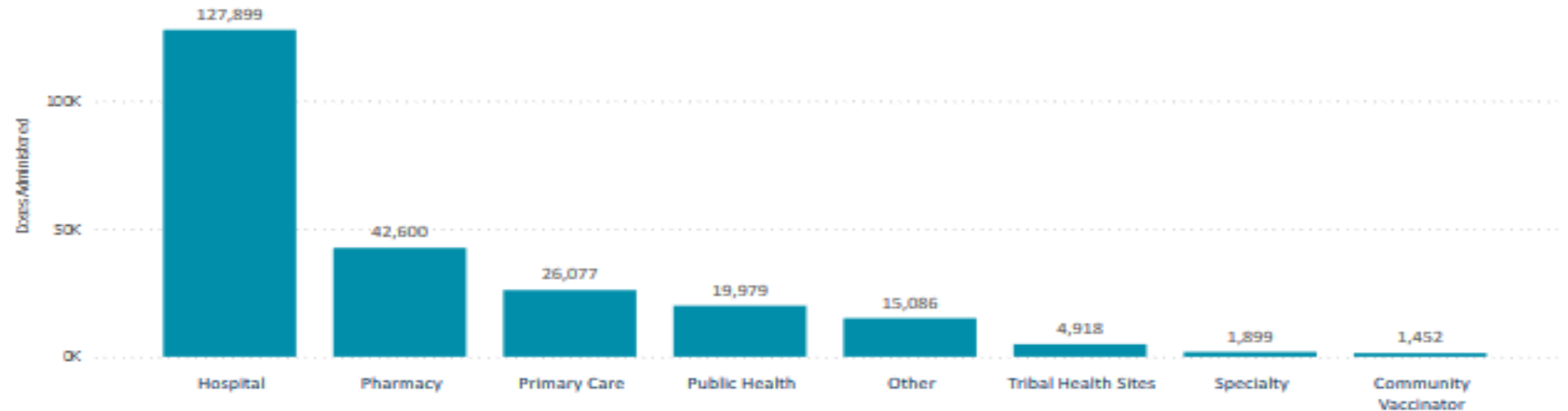
239,910

Vaccines through: 1/17/2021

Vaccines by Product

Product	% Doses Administered	Doses Administered
MODERNA	30.9%	74,020
PFIZER	69.1%	165,816
Unknown/missing	0.0%	74

Vaccines Administered by Provider Type



Data reported as of: 1/17/2021

Minnesota Population by the Numbers

- Recent weekly allocations for Minnesota: Approximately 65,000 doses
- Tier 1A: Approximately 500,000 Minnesotans
- 65+: Approximately 918,125 Minnesotans
 - Population of persons 75+ is 388,125
 - Population of persons 65-74 is 530,000