



Water Quality and Infrastructure Bonding Recommendations House Water Division

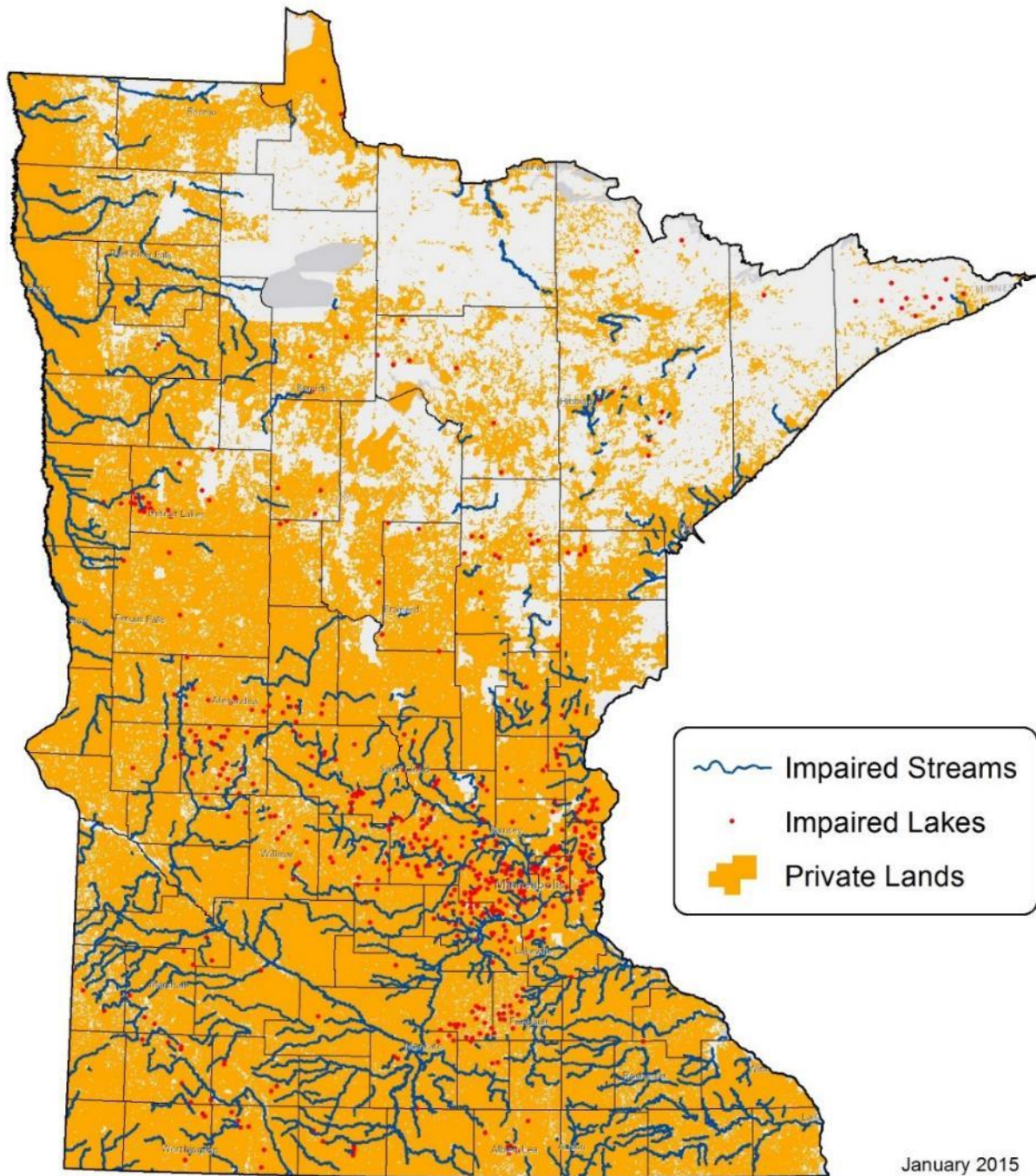
Angie Becker Kudelka | Assistant Director
February 24, 2020

BWSR Mission



Improve and protect Minnesota's water and soil resources by working in partnership with local organizations and private landowners.

Business model



Private lands

Local government
delivery system

On-the-ground results

Governor's Recommendations

Local Roads Wetland Replacement Program (\$26.4M)

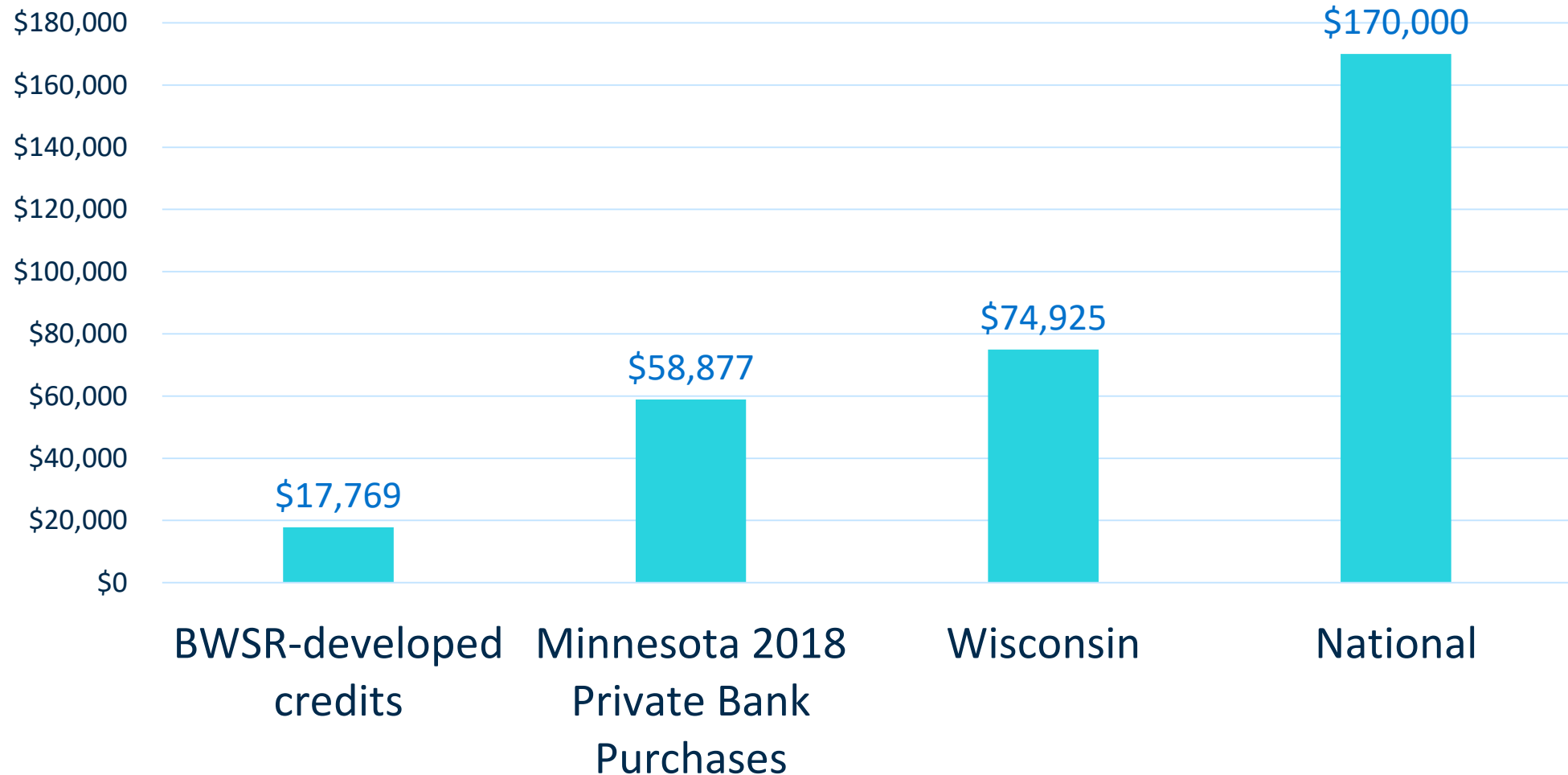
MN CREP (\$16.5M)

Local Roads Wetland Replacement Program

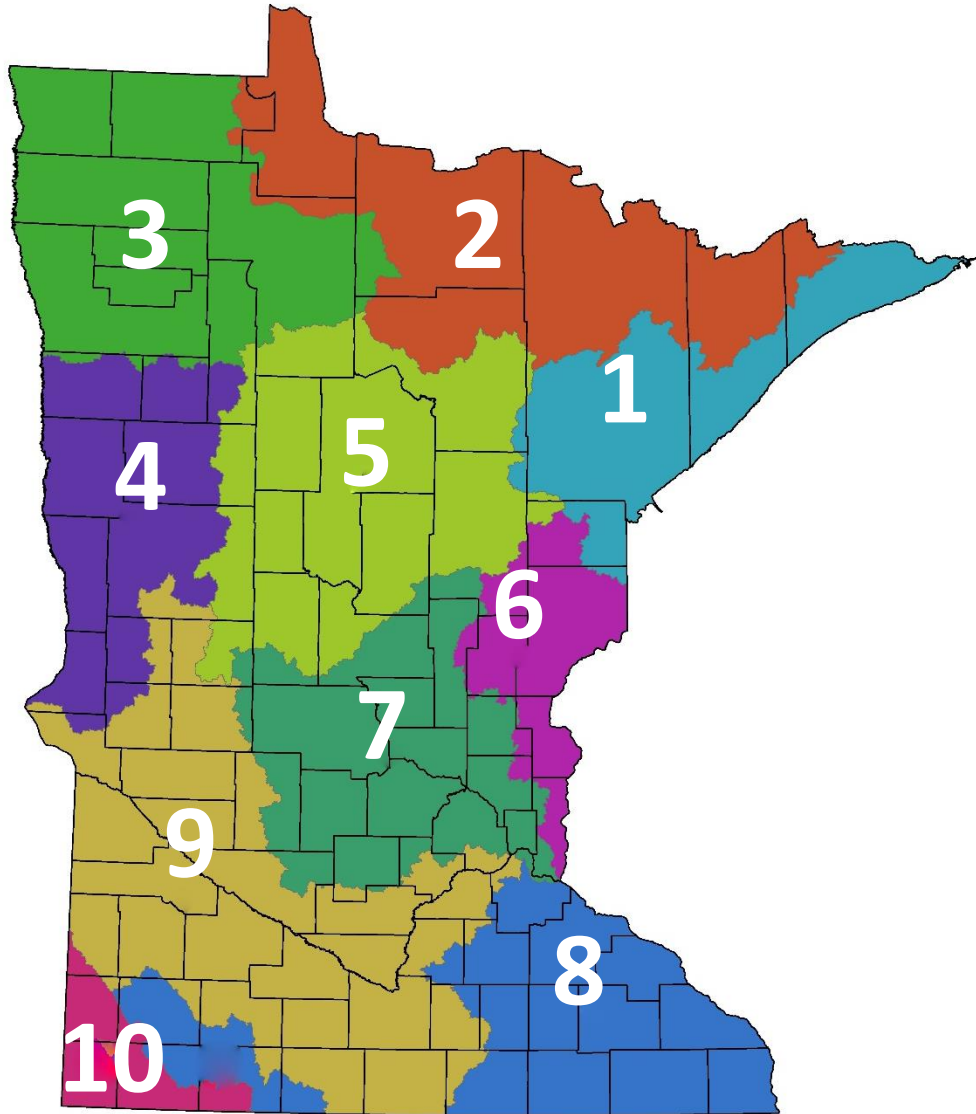


Local Roads Wetland Replacement Program

Average Cost of Wetland Credits Per Acre



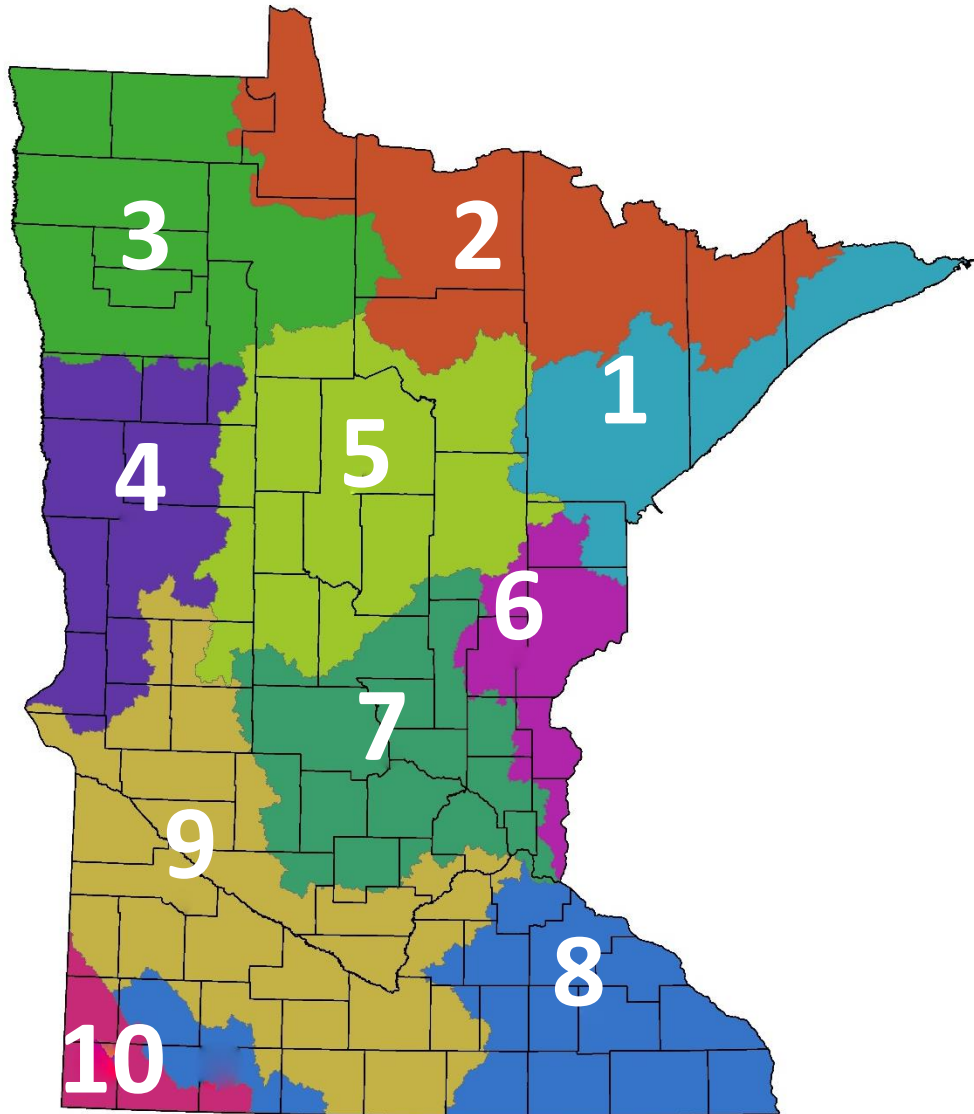
Local Roads Wetland Replacement Program



Bank Service Area	Available Credits
1	12.3
2	0
3	27.2
4	0
5	1.4
6	0
7	36.7
8	0
9	10.8
10	0.8

Status 1/20/2020

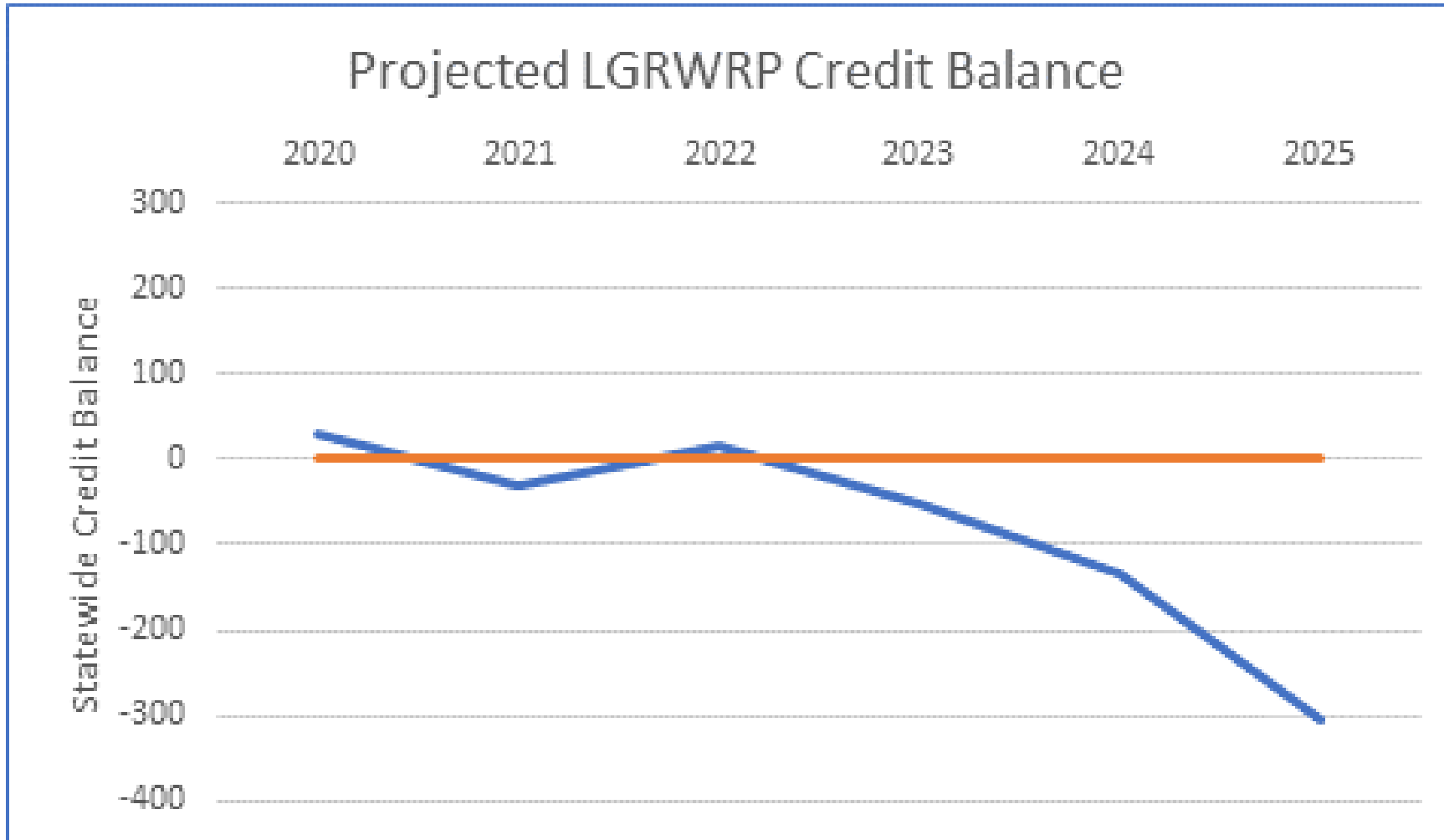
Local Roads Wetland Replacement Program



Year	Need	Bonding Appropriation
2010	\$ 8,420,000	\$ 2,500,000
2012	\$13,100,000	\$ 6,000,000
2014	\$ 5,400,000	\$ 2,000,000
2016	\$10,330,000	\$ 0
2017	\$15,000,000	\$ 5,000,000*
2018	\$16,380,000	\$ 6,700,000
2019	\$26,400,000	\$ 0
2020	\$26,400,000	

*Additionally, a one-time \$5 million appropriation from the General Fund in 2017 provided short-term program continuation.

Local Roads Wetland Replacement Program



Local Roads Wetland Replacement Program



**Governor's 2020 Bonding
Recommendation:**

\$26.4 million

Local Roads Wetland Replacement Program

Hansen Wetland Bank, Murray County



Minnesota CREP



CREP is at work for Minnesota's water quality and wildlife habitat.

CREP Status



- Voluntary approach
- Prioritizes three conservation practices:
 - buffers,
 - wetlands,
 - wellheads for drinking water
- 24,000 acres enrolled

Funding the Minnesota CREP

Federal Contribution: \$350 million

State Contribution: \$175 million

State Funding for the MN CREP Program (,000s)	Appropriated in past sessions	2020 Recommendations
Env. and Natural Resources Trust Fund (LCCMR)	\$19,500	
Clean Water Fund	\$63,250	
Outdoor Heritage Fund	\$55,790	
Capital Investment	\$20,000	\$16,500
Total	\$158,540	\$16,500

Minnesota CREP applicants



“In addition to enjoying the habitat benefits, it also made sense for us financially. We really like that the payment was spread out over 15 years compared to a onetime payment.”

Minnesota CREP applicants



Clean Water Benefits

Reductions

- Phosphorus 7,200 lbs / year
- Sediment 49,200 tons / year
- Nitrogen 480,000 lbs / year
- GHG 35,300 CO₂-e / year



Benefits to Minnesotans



- Keeps soil on the land
- Provides temporary water storage
- Protects vulnerable drinking water
- Enhances grassland and wetland habitat
- Sequesters carbon

