



Budget Proposals – March 18, 2022

Transforming lives for a safer Minnesota

Paul Schnell, Commissioner of Corrections

Chris Dodge, Chief Financial Officer

mn.gov/doc

Overview of the DOC – State Correctional Facilities



MCF-Shakopee
est. 1986
capacity: 656



MCF-Faribault
est. 1989
capacity: 2026



MCF-Lino Lakes
est. 1963
capacity: 1325



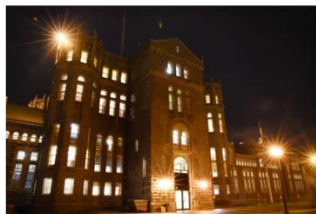
MCF-Red Wing
est. 1889
capacity: 42-A, 111-J



MCF-Rush City
est. 2000
capacity: 1018



MCF-Oak Park Heights
est. 1982
capacity: 444



MCF-St. Cloud
est. 1889
capacity: 1058



MCF-Stillwater
est. 1914
capacity: 1626



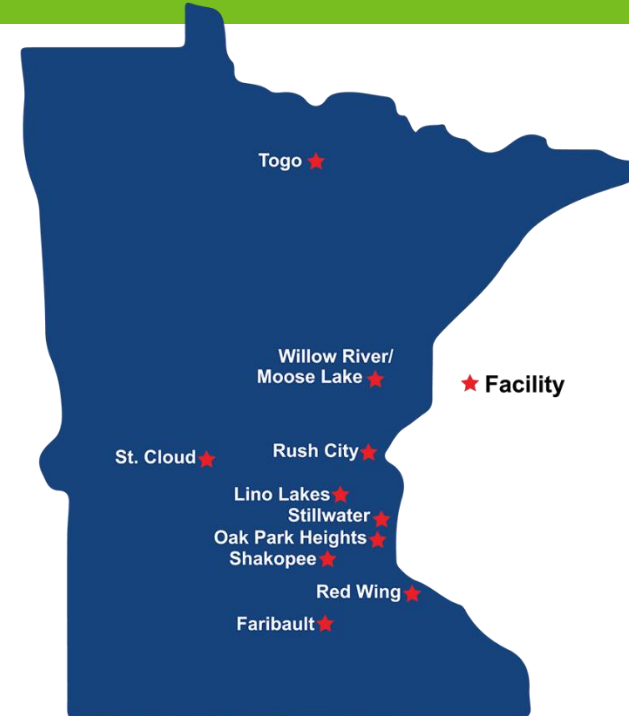
MCF-Togo
est. 1955
capacity: 75



MCF-Moose Lake
est. 1938
capacity: 1057



MCF-Willow River
est. 1992
capacity: 177



DOC - By The Numbers

- More than 4,300 employees
 - 10 prisons
 - 17 statewide district field supervision offices
 - Agency budget \$630.943M FY22
 - 97% General Fund provided
- Typical pre-COVID population: approx. 9,200
 - January 1, 2022 population: 7,511
 - Over 95% of incarcerated persons will return to their communities upon release from prison
 - During the typical month, the DOC releases approx. 600 people from its prisons

Overview – DOC 2022 Requested Investments

- Justice Reinvestment Initiative: Equitable Funding and Evidence-Based Practices in Community Supervision
- Statewide Public Safety Data Infrastructure
- Pathways to Employment
- Family Support and Connection
- Healing House Project Manager
- Body-Worn Cameras for all Cos and ISR agents
- Minnesota Rehabilitation and Reinvestment Act
- Indeterminate Sentence Review Board
- Interstate Transport Reimbursement to Counties
- Property Insurance Increases
- Project Management



Equitable Funding and Evidence-Based Practices in Community Supervision

Fully fund the recommendations of the partnership with all 87 counties and the three delivery systems to more equitably fund the state's supervision systems and implement evidence-based practices.

Equitable Funding and Evidence-Based Practices in Community Supervision

	FY 2023	FY 2024/ 2025
Formula Base Funding	\$21.3M	\$42.6M
Grants for Community-Based Programming and Services	\$2M	\$30M
Statewide Quality Assurance and Training	\$2M	\$4M
DOC Grants Management	\$939,000	\$489,000

Support collaborative agreement with counties and all partners – in both policy and budget.

- Create one formula for supervision investment for all counties, tribes, and the DOC
- Ensure effectiveness and equity across systems and across the state – using evidence-based practices
- Reduce racial disparities and geographic inequities
- Improve access to behavioral health care in the community

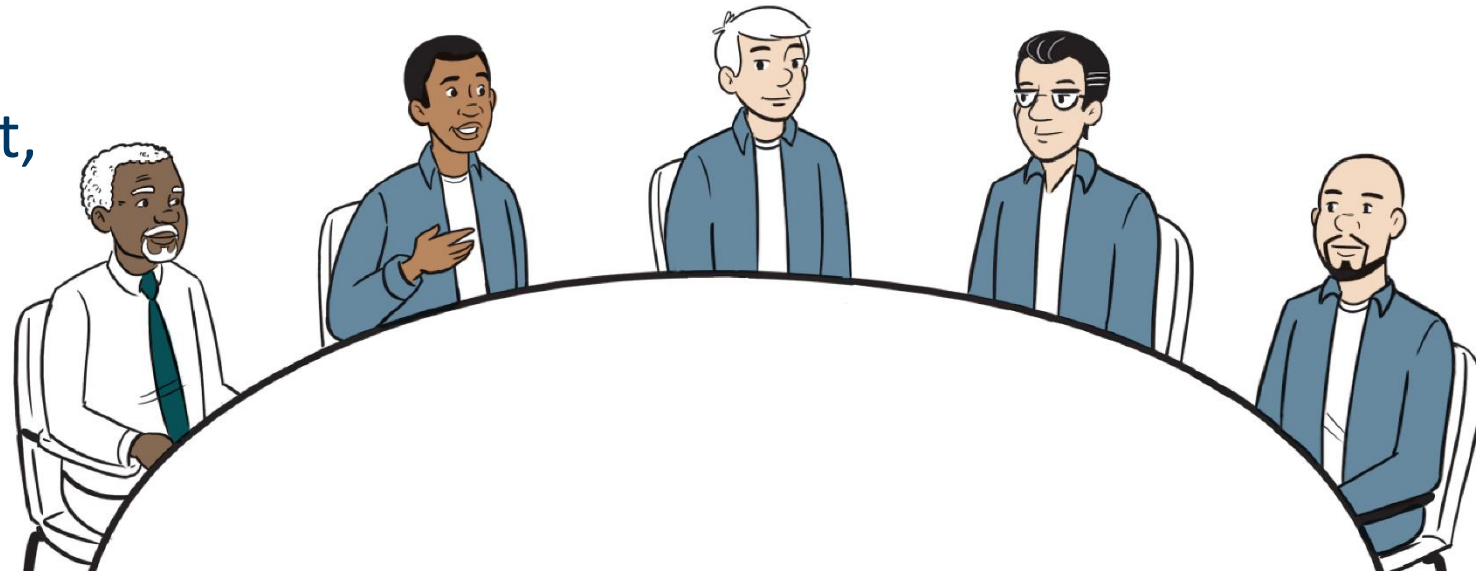


Body-Worn Cameras

- To better ensure safety and transparency on behalf of staff and the incarcerated population.
- Request is to equip all correctional officers and intensive supervised release agents.

FY22-23	FY24-25
\$1.5M	\$2M

MRRA: Requiring personalized assessments and rehabilitation plans for incarcerated people that, if meaningful engagement is shown, will result in earned incentivized release from confinement.



Minnesota Rehabilitation & Reinvestment Act – HF 2349

MRRA – HF 2349

1. Victim support services
2. Crime prevention and intervention initiatives;
3. Community-based correctional programs
4. General Fund

1. Victim support services
2. Crime prevention and intervention initiatives;
3. Community-based correctional programs
4. General Fund



Funding will establish an Indeterminate Sentence Release Board (ISRB) to review eligible life **with the possibility of parole** cases.

FY22-23	FY24-25
\$40,000	\$80,000

Indeterminate Sentence Release Board

- Five-member board to replace sole decision making by the commissioner of corrections.
- Minnesota is only one of four states where these decisions are made by one person, rather than a panel of experts.



Interstate Transport Reimbursement to Counties

FY22-23	FY24-25
\$250,000	\$500,000

- HF 2970 (Urdahl) heard on March 8
- Provides counties reimbursement for travelling to return individuals to Minnesota, in compliance with the Interstate Compact for Adult Supervision

Pilot Project: DOC Mental Health Unit Use by Counties



- Creates a pilot project to provide treatment for individuals incarcerated in county jails who have serious and persistent mental illness.
- Cost neutral to the state – counties will reimburse expenses.
- Report and recommendations due to legislature after 18 months.
- HF 4230 (Edelson) – stand alone bill

Project Management

- Provides funding for two project managers to ensure a more strategic and collaborative approach across the agency.
- Builds needed capacity to manage agency-wide collaboration
- Will enable the delivery of more transformative services, process changes, and improved outcomes for DOC staff, incarcerated individuals, and those who are under supervision.

FY22-23	FY24-25
\$230,000	\$460,000



Property Insurance

FY22-23	FY24-25
\$650,000	\$1.3M



- Annual rates increased by approximately 54% in FY2020 and have continued to increase significantly in FY2021 and FY2022
- The DOC operates and maintains 11 state-owned correctional facilities across the state with a total of 336 buildings and has the responsibility to safeguard the state's assets.



Statewide Public Safety Data Infrastructure – HF 4185

Statewide Public Safety Data Infrastructure



- Replaces critically antiquated DOC systems with data-driven service delivery.
- Response to the 2020 Office of the Legislative Auditor Report on Safety and Security.
- Invests in efficient, responsive, transparent data management systems at the DOC for more data-driven decision making.

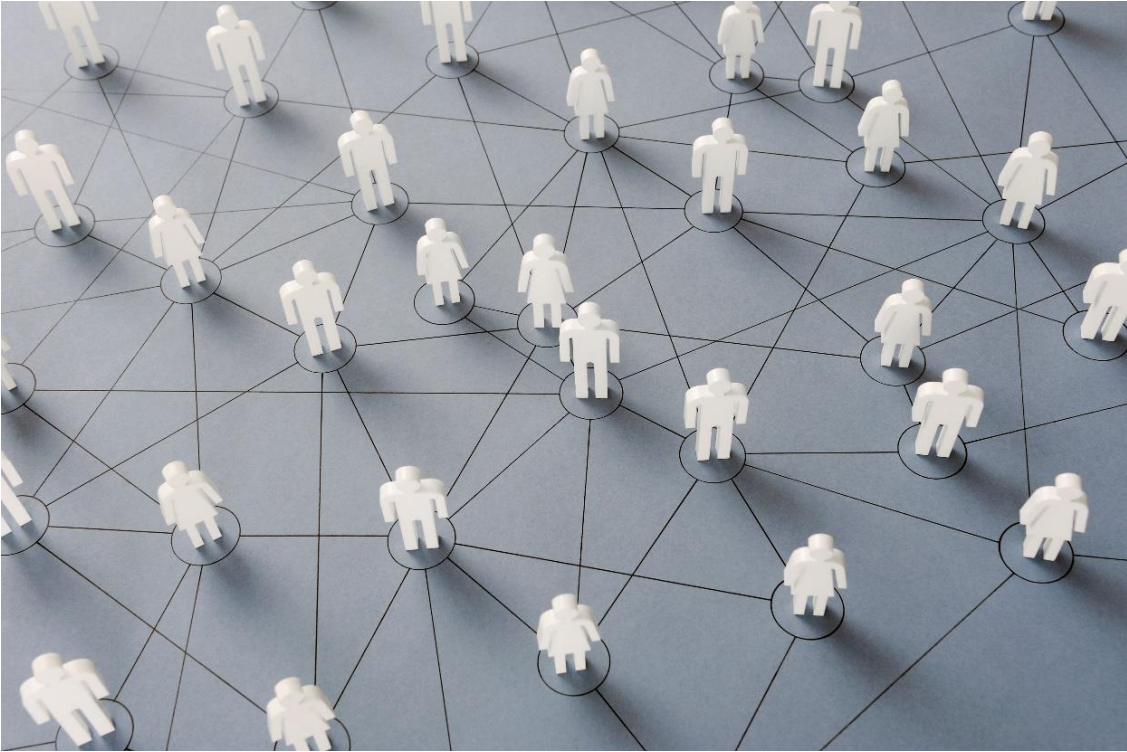
FY22-23

\$12M

FY24-25

\$35M

Statewide Public Safety Data Infrastructure



Create a statewide hub of correctional supervision data for all counties and partners

- Approx. 100,000 individuals on supervision across the state
- Yet Minnesota lacks a uniform, reliable public safety information-sharing hub for correctional supervision for all 87 counties, the Judicial Branch, law enforcement, and the DOC



Pathways from Prison to Employment – HF 4215/ SF 4074

Pathways from Prison to Employment



- Expand work release to allow community-based education to those who qualify.

- Expand partnerships higher-ed institutions for degree-track classes.
- Create a Public Safety and Economic Opportunity Unit to build pathways from training, education, and industry in prisons to job placements upon release

	FY 22/23	FY 24/25
Expand Partnerships and Create a Public Safety and Economic Opportunity Unit	\$2 million	\$7 million
Expand Work Release for Education	\$1 million	\$2 million



Healing House Project Planning – HF 4224

Healing House: a model of supportive, transitional housing, conceptualized by individuals with lived expertise, to be an intentional space for justice-systems involved Native American women to begin their journey towards healing and housing stability.

Budget for One Minnesota



One Minnesota | mn.gov/doc

Healing House Model Project Planning and Design



- Temporary staff will build partnerships with the community, philanthropy, and connecting the project with resources within MHFA, DHS, and the Missing and Murdered Indigenous Relatives Office at DPS.
- The intention is to create a space where women can address their trauma with a specific focus on sexual and domestic violence victimization.

FY22-23	FY24-25
\$150,000	\$300,000



Family Support and Connection – HF 4191

Creation of a DOC Family Support Unit and increased investments to build meaningful connections between incarcerated individuals and

Family Support and Connection



- Create a **Family Support Unit**: to develop and partner on evidence-based programming with community members and organizations
- Invest in access to phone calls and video visits and enhance programming to create meaningful connections with families and children – including expanded parenting programming for both incarcerated moms and dads

	FY 22/23	FY 24/25
Create a Family Support Unit	\$280,000	\$560,000
Invest in Meaningful Connections	\$1.5 million	\$3 million