



CITY OF NEWPORT

2060 1st Avenue
Newport, MN 55055
(651) 459-5677
ci.newport.mn.us

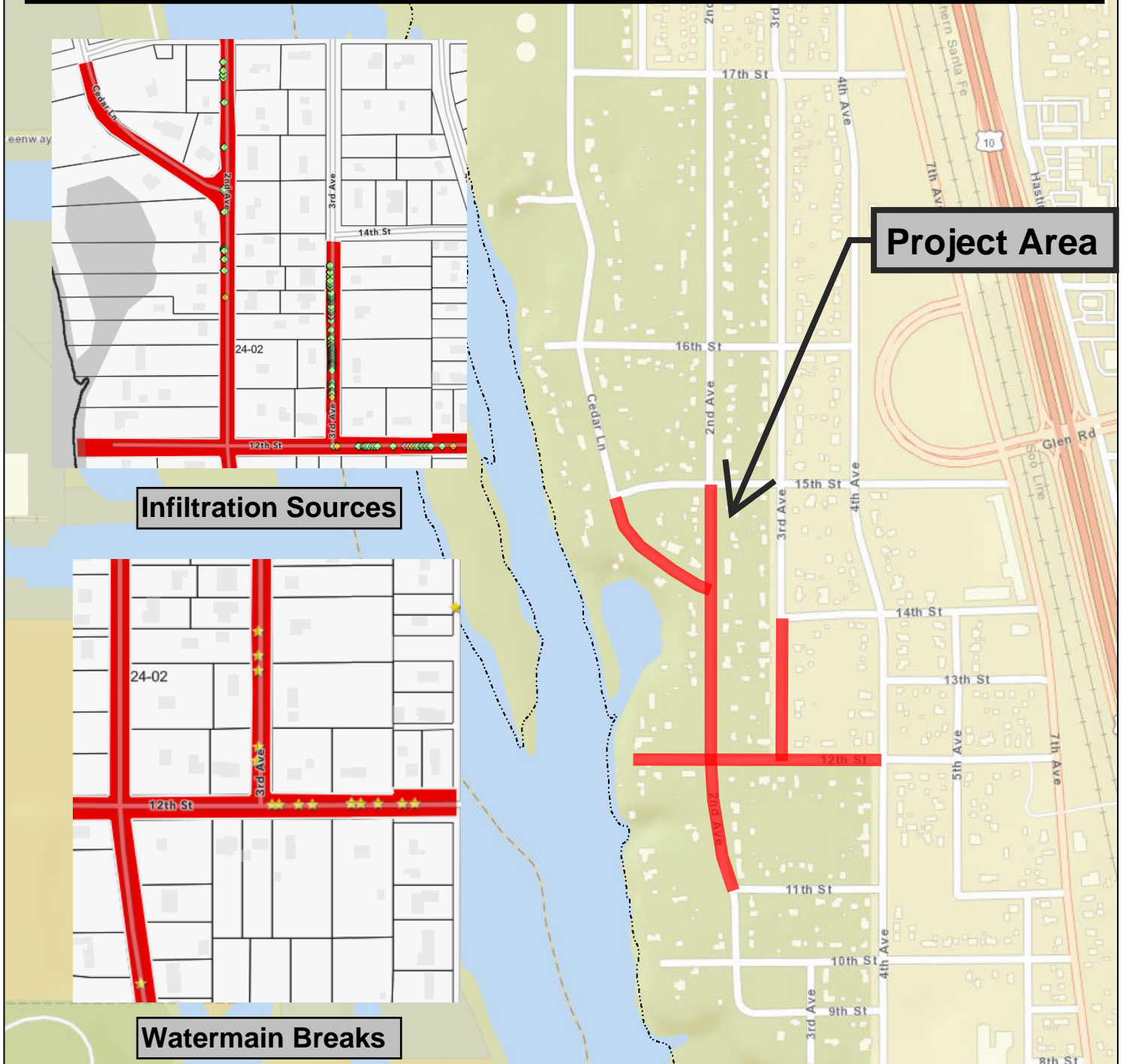
HF 2934 Newport Water & Sewer Infrastructure

- **Newport Background**
 - Population 3,800
 - Median household income \$58,000 (2021 US Census Bureau)
 - Approximately 33% BIPOC (2020 census)
 - Met Council surcharge fees for additional I&I have increased nearly 10% each year since 2013 (2022 Surcharge \$360,233 – 2013 Surcharge \$190,469).
 - During some rain events over 600,000 gallons of rainwater infiltrate.
- **Inflow and infiltration (I&I) is an environmental problem**
 - Chemicals used and created during treatment.
 - Met Council treating hundreds of thousands of gallons of water not needing to be treated.
- **Infrastructure improvements will help support future development; this project will jumpstart needed improvements.**

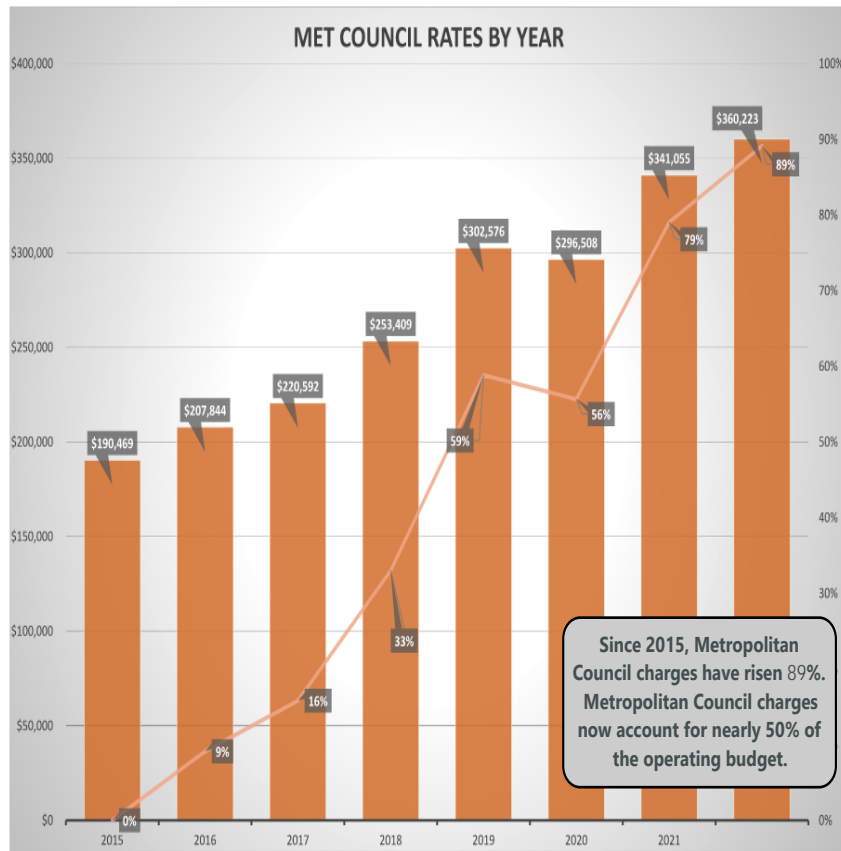
City of Newport Capital Improvements Project

Requested Appropriation: \$5,162,000

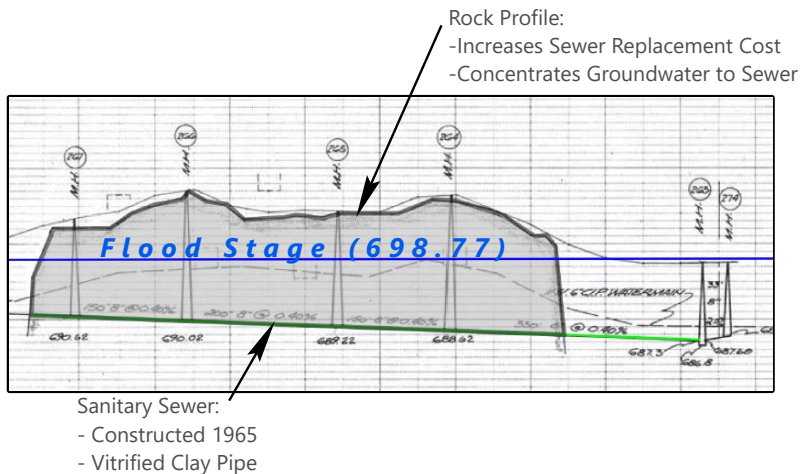
- Replace Watermain, Hydrants & Services
- Replace Sanitary Sewer, Manholes, Services
- Construct New Storm Sewer and Stormwater Treatment
- Reconstruction Street Pavement with Curbing



Newport Sewer Rates



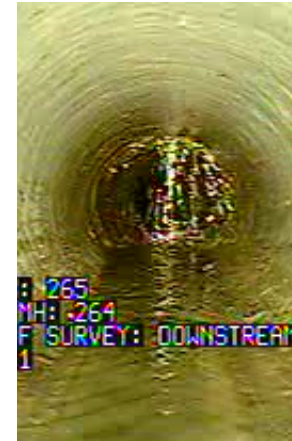
Typical Sewer Profile



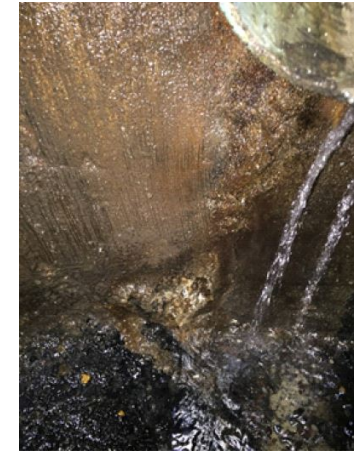
Infiltration in Action



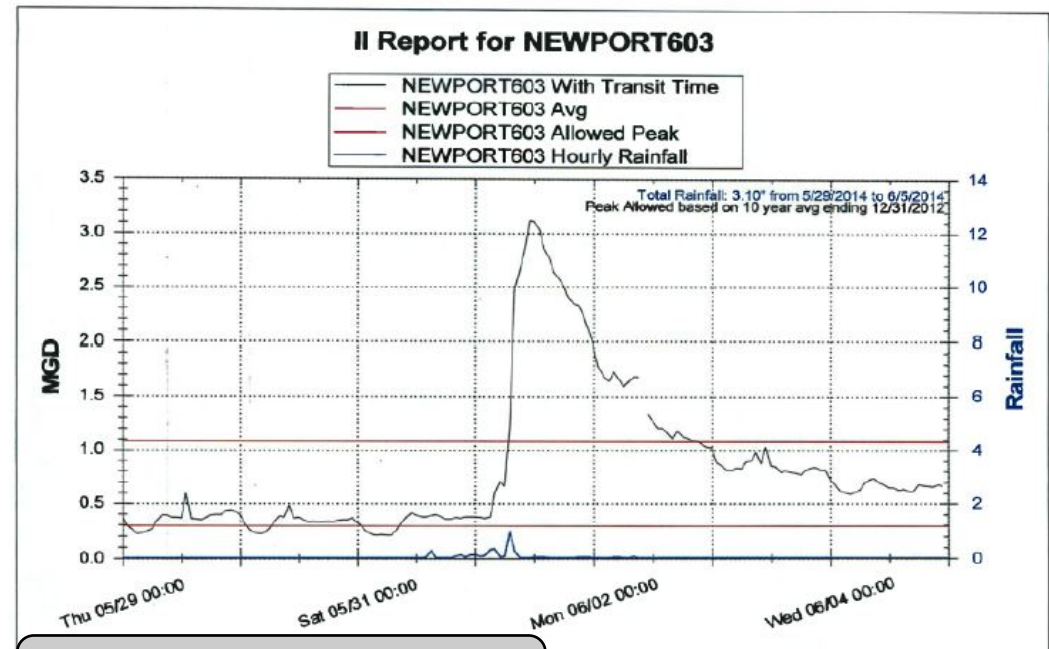
Infiltration at Manhole Structures



Infiltration at Service Connections



Infiltration at Manhole Structures



Peak Discharge to Met Council Environmental Services (MCES) 10 times above average during rain events

