

Educational Partnerships Coalition

NORTHSIDE ACHIEVEMENT ZONE (Minneapolis)

EVERY HAND JOINED (Red Wing)

NORTHFIELD PROMISE (Northfield)

ST. PAUL PROMISE NEIGHBORHOOD (St. Paul)

and

PARTNER FOR STUDENT SUCCESS (St. Cloud Area)



Educational Partnerships Coalition (EPC)

Vision Statement

Our children succeed in school and in life.
Our communities thrive.
Our state is equitable and prosperous for ALL.

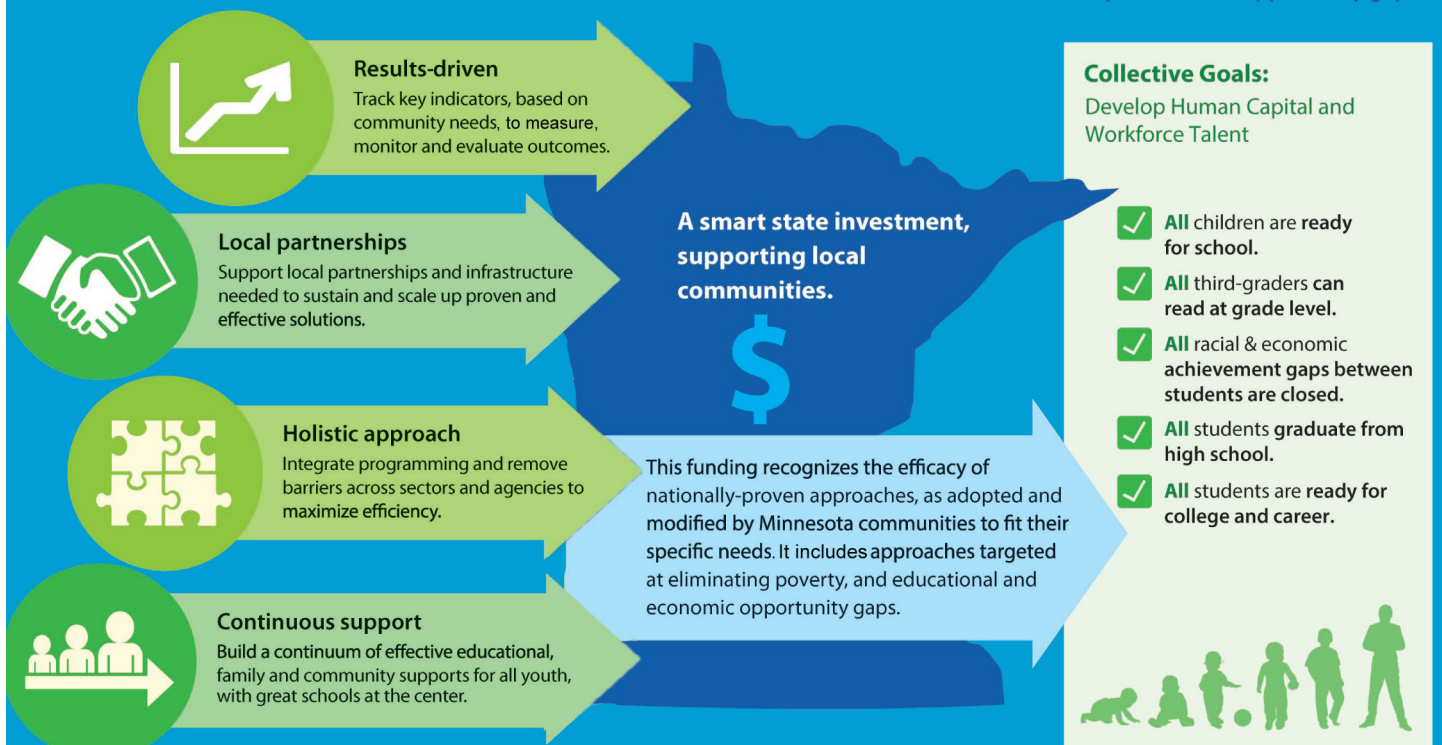


Mission Statement

Using the collective impact model, EPC builds the civic infrastructure in local communities needed to drive meaningful change and deliver measurable results for Minnesota's children across all races and income.

Educational Partnerships Fund | Aligning Efforts. Multiplying Impact.

Establishing a statewide network of comprehensive educational partnerships that emphasize local solutions and results-based accountability to close the opportunity gap



History of Partnership

In 2008, North Minneapolis community organizations and residents pulled together to explore solutions to seemingly intractable issues. Together, we formed the collaborative known today as the Northside Achievement Zone (NAZ).

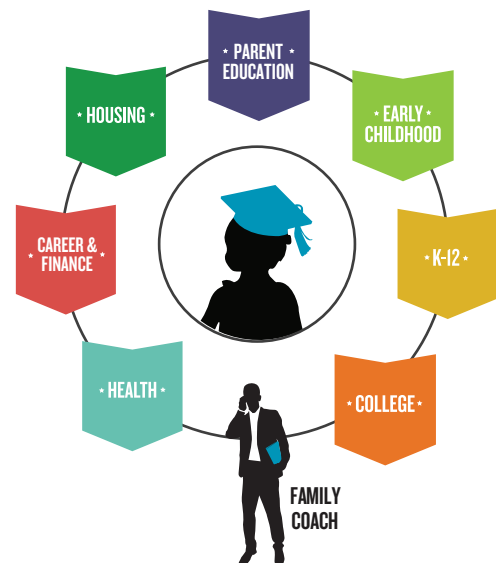
NAZ operates as a strategy across 40+ local nonprofits and schools with the shared goal of permanently closing the achievement gap and ending generational poverty.

NAZ and partners align resources that holistically address gaps and needs related to education, housing, career and finance, and health to support children's academic success. Through NAZ Family Academy courses, parents gain the support and skills they need to lead themselves out of poverty.

NAZ serves as the "backbone" for collaboration, employing Family Achievement Coaches, Academic Specialists, and subject matter experts who work directly with families. Our organization facilitates consistent communication among partners and provides the central data system used by NAZ and partner staff.

\$1 INVESTED, RETURNS \$6

NAZ's work will have an impact well beyond North Minneapolis. Wilder Research released a 2015 study that projects a [societal gain of \\$6.12](#) for every dollar invested in NAZ.



Activities Funded by State Appropriation

Funds from the State of Minnesota have been used to strengthen the NAZ collaborative's comprehensive ecosystem of support. Children and families don't come in pieces and neither do solutions. Because the collaborative is more than 40 partners strong, in FY17 enrolled families received customized wraparound support which removed obstacles to academic success. NAZ is getting results because government, businesses, and private philanthropy have all chosen to invest in our collaborative model.

Our rigorous, cross-partner data review process ensures that we're learning what works, and identifying and revising anything that isn't effective. Increasingly, we're asked to share our results and best practices with other communities around the state, country, and world.

In FY17:

- 966 families and 2,105 children participated in NAZ
- 145 parents graduated from Family Academy parent education classes
- 596 children worked with a coach
- 778 children were enrolled in expanded learning (K-8)
- 1,270 scholars (5-18 years old) had Achievement Plans created by parents to support them
- 117 children received early childhood progress monitoring with referrals to support services as needed.
- 202 parents set and achieved career-related goals.
- 209 children were enrolled in high quality early learning centers.

FY2017 = July 2016-June 2017

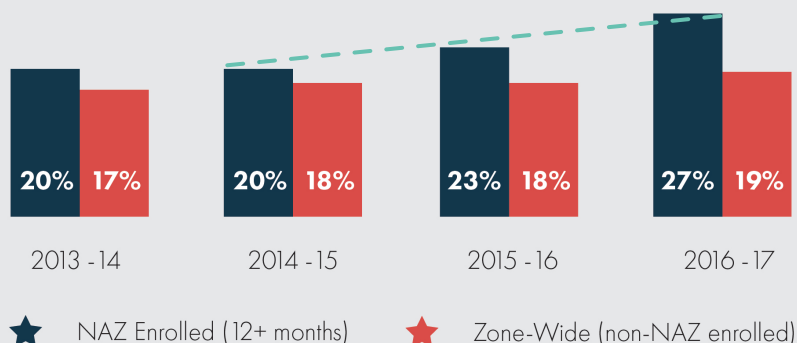
NAZ Solutions Ending Disparities

Combination of customized and layered supports yields best outcomes

READING PROFICIENCY 3-8 GRADE (MCA)

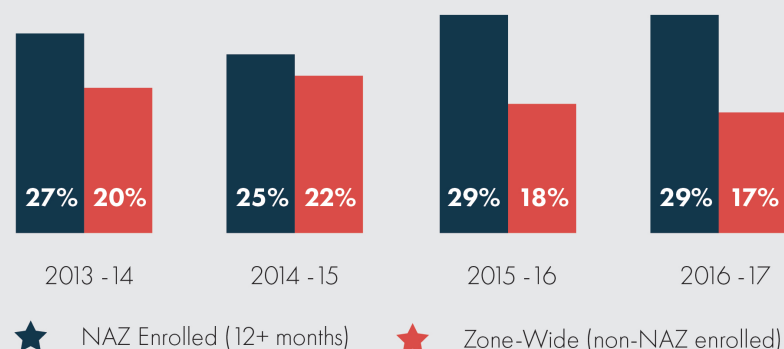
Reading proficiency among NAZ scholars was significantly higher than other comparable Northside students.

Proficiency has increased significantly from 2014-15 to 2016-17.



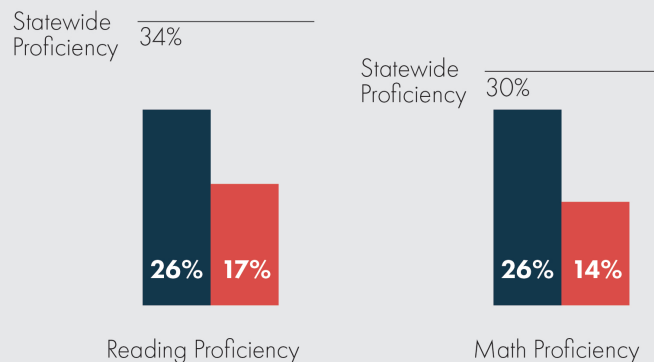
MATH PROFICIENCY 3-8 GRADE (MCA)

Math proficiency among NAZ scholars was significantly higher than other comparable Northside students.



AFRICAN-AMERICAN SCHOLARS 3-8 GRADE (MCA)

Proficiency for African-American NAZ scholars is closer to the statewide average than other comparable Northside students.



778

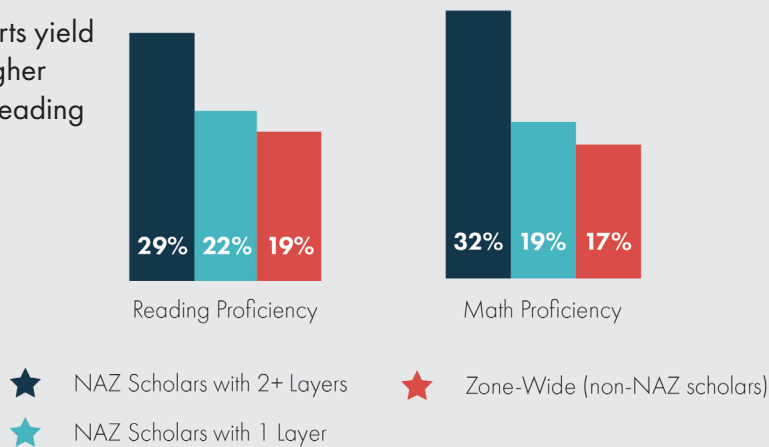
Scholars attended NAZ academic expanded learning

1270

scholars had Achievement Plans created by their parents

LAYERED SCHOLAR STRATEGIES

Layered supports yield significantly higher proficiency in reading and math.



135

Families received specialized housing support

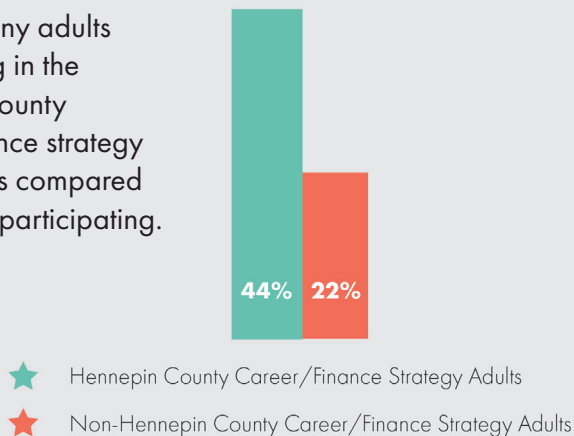
Stable housing helps children focus on school

209

Children were enrolled in high-quality early learning centers in FY17

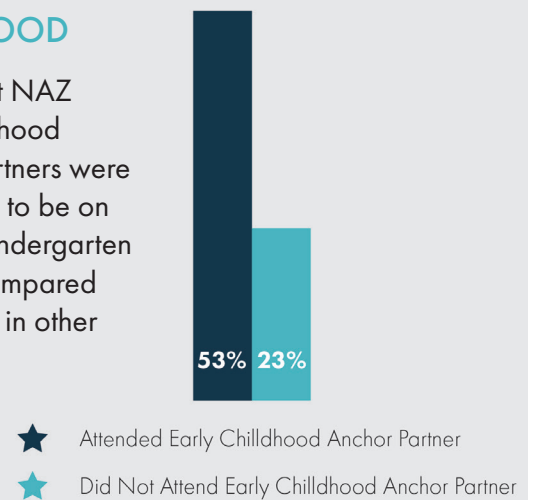
LAYERED CAREER STRATEGIES

Twice as many adults participating in the Hennepin County career/finance strategy got new jobs compared to those not participating.



EARLY CHILDHOOD

Scholars at NAZ early childhood anchor partners were more likely to be on track for kindergarten reading compared to scholars in other programs.



Northside Achievement Zone's Plan for the Next Biennium

- Focus on scaling results across the Northside by implementing what works: layered approach, full implementation of NAZ strategies at schools and early learning centers, after-school and summer programs, and parenting education and empowerment classes.
- Support growth of families into leadership roles to create a tipping point of transformation on the Northside.
- Stabilize housing for 100 families/year, and increase employment for NAZ families.
- Increased alignment with all levels of government (federal, state, county, and city).

Moving Forward

Funding from the State of Minnesota supported NAZ in building an innovative solution that's closing one of the worst achievement gaps in the nation. NAZ is unlike anything that's been done before in Minnesota. Everything we do is grounded in evidence-based best practices. Tools that NAZ developed are being adopted across the nation.

NAZ is committed to real, measurable results. Our collaboration holds each of us accountable, using data to ensure we're effective. And when the data shows something is not working, we make changes until we get it right.

Continued funding will support the implementation of highly effective practices that are supporting low-income children of color to grow into leaders of tomorrow's workforce.

* Anchor schools fully implementing NAZ strategies

History of Partnership

On September 26, 2012, leaders from Red Wing Public Schools, businesses, nonprofits, local government agencies and foundations came together to focus on Red Wing's most important resource – its youth. Since that first meeting, Every Hand Joined has been a community-wide initiative building to over 250 volunteers committed to helping all children reach their full potential and be successful in life. This commitment runs from preschool through a young person's career.



Activities Funded by State Appropriation

- Accumulate, analyze, and disseminate data through a **full-time data manager**, who monitors data and provides requested data to Every Hand Joined networks and the school district
- Focus on building social-emotional competencies in pre-kindergarten students by hosting two, 2-day workshops, **training 40 early childcare providers and professionals**
- Conducting a **pilot program using a phone app** to assist parents in the brain development of their young children
- Providing every high school junior with a **Postsecondary toolkit**, offering information for navigating the postsecondary journey
- Hosted the **4th Annual Postsecondary College Fair and Expo**
- Coordinating **FASFA workshops**
- Led **college visits** for alternative high school students
- Brought **College Possible** to Red Wing and expanded participation



PSEO College Fair

Changes in Outcome Measures

Percentage of Children Ready for Kindergarten



2014: 69%
2017: 83%

Kindergarten Student Entrance Profile, Red Wing Public Schools



Over **57%** of students in the class of 2017 completed the FAFSA, an **increase of over 3% since 2014.**

14,431 meals

served through the Every Hand Joined-coordinated 2017 Summer Food Program – a

62% increase over the previous year



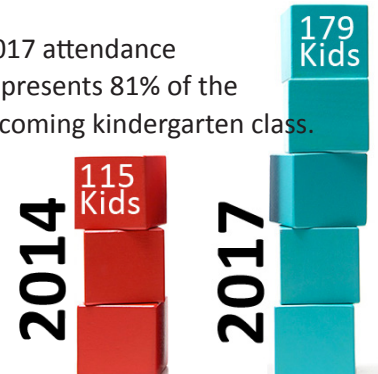
73% of Red Wing graduates **enrolled in postsecondary** within a year of high school completion – **up 12% since 2013**



Kindergarten Boot Camp

(a 4-day exposure to school for incoming kindergartners supported by Every Hand Joined) has increased from 115 children in 2014 to 179 in 2017 – a **55% increase.**

2017 attendance represents 81% of the incoming kindergarten class.



Every Hand Joined's Program Plan for the Remainder of the Biennium

- Maintain and strengthen commitment to data accumulation and analysis
- Strengthen data processes and procedures
- Support school district personnel in vertical alignment of math curriculum
- Build on success of mentoring program at the middle and high schools
- Increase awareness and participation in *College Possible*
- Analyze key data around Class of 2017 students indicating fall postsecondary enrollment but not following through
- Continue to train additional early childhood professionals in social-emotional development strategies
- Implement and support efforts to engage parents in early childhood brain development through use of a phone app
- Provide postsecondary experiences for students currently not on a post-secondary track
- Support teachers in efforts to increase reading proficiency in K-3 students
- Additional training for staff on collective impact best practices
- Continued alignment with Red Wing Public Schools' World's Best Workforce Plan
- Integrate equity into all initiatives
- Work to enhance the Summer Food Program



2018

History of Partnership

Formed in 2012, Northfield Promise is a collective impact initiative designed to achieve community-level change for children and youth growing up in Northfield, Minnesota. Northfield Promise seeks to build a culture of collaboration and shared accountability among community partners to ensure ALL our children achieve their full potential. As a data-driven initiative, Northfield Promise is not about just building new programs, but instead about aligning partners and resources to expand efforts that are seeing results.

Northfield Promise stakeholders spent 18 months and engaged over 500 community partners to help identify 10 critical community-level benchmarks for kids' academic, social-emotional and physical well-being. These begin in early childhood and culminate when youth graduate from high school with a plan for the future.

The Northfield Healthy Community Initiative provides the backbone support for Northfield Promise, recruiting and convening the partners and helping ensure the implementation of the action steps. Northfield Promise is one of 70 communities nationwide accepted into the StriveTogether network (the national leaders in collective impact work).

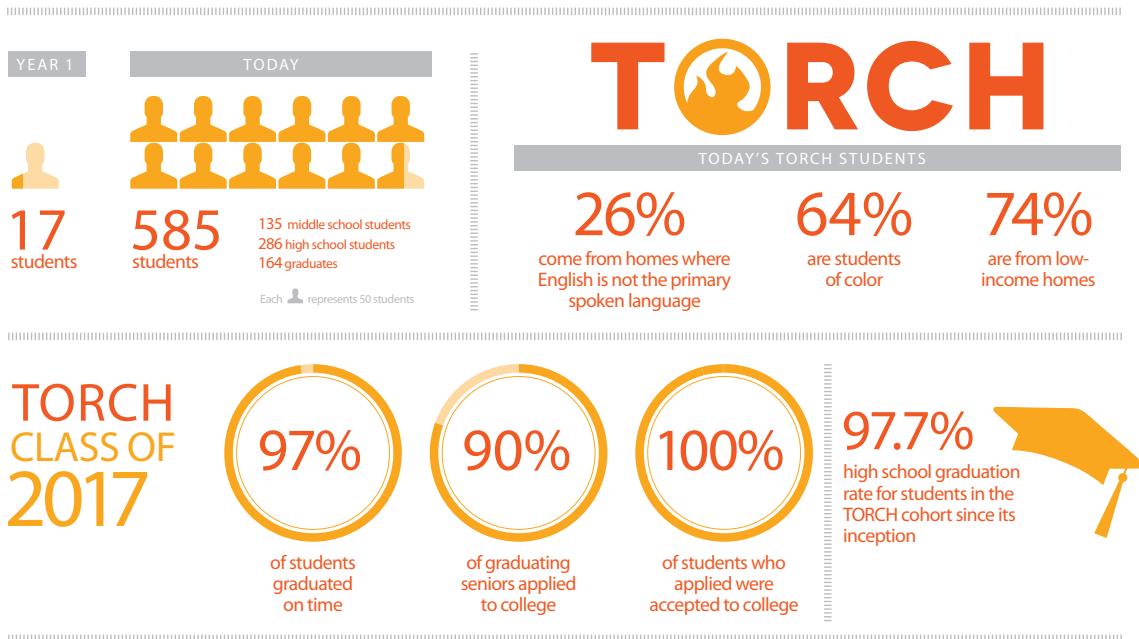


Activities Funded by State Appropriation

- Engaging more than **200 community partners** on action teams designed to focus on the Northfield Promise benchmarks
- Implementing a daily best practices early learning curriculum (Mother Goose Time) in **23 home day cares**, reaching over 140 children (no previous curriculum implemented in these day cares)
- Through the TORCH initiative, provided academic support and coaching to **more than 500 youth** in grades 6-12 (plus alumni) who are low-income, students of color and/or potential first-generation college attendees
- Became only the second Minnesota city where every medical establishment participates in the evidence-based "Reach Out & Read" program; during **every well-child check** in Northfield, pediatricians now provide literacy strategies to parents and present child with a free book
- Supporting nearly **1,400 youth** (unduplicated count) in free out-of-school-time programming
- Implemented a districtwide **kindergarten readiness assessment** recommended by the Minnesota Department of Education – Formative Assessment System for Teachers
- Worked with the Northfield Public Schools to implement **evidence-based social-emotional curricula** districtwide
- Continued a community school model at Northfield's elementary school with the highest poverty rates. Providing **more than 650 hours per year** of extended programming for youth, parents, and community members at the school. Services range from medical and dental care to early childhood programming to adult basic education
- Worked with local evaluation and statistics experts to **track community-wide progress** on each of the 10 Northfield Promise benchmarks

Winner of the 2017 Bush Prize for Community Innovation for achieving measurable results that benefit local youth

Northfield Promise at Work: TORCH Success



Northfield's Plan for the Remainder of the Biennium

THE PLAN

Starting a supported **alumni center for local graduates**, including opportunities to earn an associate's degree without leaving Northfield (thereby overcoming significant barriers seen by recent graduates)

Leading community initiative to increase the number of children who complete **early childhood screening by age 4** (thereby increasing their likelihood of connecting with early intervention resources, if needed)

Continuing best practice Mother Goose Time pilots **with over 20 in-home day care providers**

Working with Northfield Public Schools to implement new **evidence-based literacy curriculum** in grades K-5 in 2019

Increasing the number of children accessing **high-quality early childhood and out-of-school-time programs** – and collaboratively overcoming barriers (such as transportation) that prevent low-income children from taking part

Continuing to support and expand the TORCH initiative, reaching **more than 500 youth** who are low-income, students of color, and/or potential first-generation college attendees

Expanding the use of **data analysis** across Northfield's school and community programs to ensure that data is driving collective decisions

Implementing a **career and college readiness initiative** in grades 6-12, helping youth identify career interests and develop pathways (including expanded opportunities to earn postsecondary credits while still in high school)

Continuing direct alignment with Northfield Public Schools' **"World's Best Workforce"** goals and the promotion of community-supported strategies to help the district reach these targets





Saint Paul Promise Neighborhood Overview

February 2018

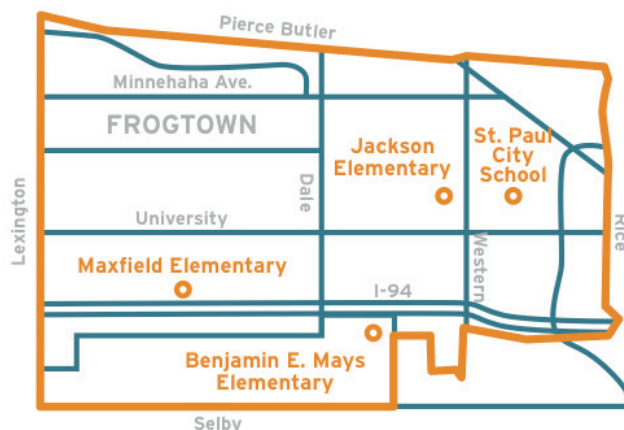
About the Saint Paul Promise Neighborhood

The Saint Paul Promise Neighborhood (SPPN) is an education partnership that brings together families, schools, and the community to put children on the pathway to college and career success.

Launched in 2010 and housed at the Amherst H. Wilder Foundation, SPPN takes a proactive approach to the education opportunity gap by focusing early in a child's life – throughout early childhood and elementary school.

Our end game is to pave pathways of opportunities leading to college and career success for children in the Frogtown, Rondo, and Summit-University neighborhoods of Saint Paul.

Using a school-based approach, we partner with four Pathway Schools in the Promise Neighborhood.



SPPN's Pathway to College and Career



EARLY CHILDHOOD



ELEMENTARY SCHOOL



MIDDLE SCHOOL



HIGH SCHOOL



POSTSECONDARY
& CAREER

Collective Ownership

Parents are the first teachers and greatest assets in our children's lives. But we know it will take the whole community to raise our future scientists and policymakers. We bring together 80+ partners to provide academic and family supports that place families at the center.



Results and Goals

Together with families, SPPN and its partners are focused on achieving seven population-level results:

Education Results

- RESULT 1** Children enter kindergarten ready to succeed in school
Goal: Improve readiness for kindergarten
- RESULT 2** Students are proficient in core academic subjects
Goal: Improve grade 3 reading scores
- RESULT 3** Students attend stable schools
Goal: Improve school attendance and reduce mobility rates
Goal: Improve school attendance for highly mobile families
- RESULT 4** Families and community members support learning in SPPN Partner Schools
Goal: Increase parent engagement in the educational process of child

Family & Community Results

- RESULT 5** Families live in stable communities
Goal: Increase housing stability
- RESULT 6** Children are healthy
Goal: Increase healthy eating and access to healthy food
- RESULT 7** Parents and SPPN Partners have the power to influence public decisions that impact their lives
Goal: Increase engagement of parents in public decision-making processes
Goal: Increase engagement of SPPN Partners in public decision-making processes

Snapshot: By the Numbers

Kindergarten readiness

400+

aligned resources to increase access to high-quality early learning programs and improve school readiness for low-income three- and four-year-old children in the Promise Neighborhood (*Multiple reports*)

Summer learning loss prevention

94%+

of children prevented summer learning loss over the past 5 summers (*Multiple reports*)

Children served

2,249

children served in the 2016-17 school year

3rd grade reading

96%

of children who completed the Sankofa reading program run by SPPN Partner, NdCAD, improved 1-7 reading levels in 9 weeks (*U of MN, 2016*)

Parent engagement

14,000+

engagement efforts were made by SPPN navigators to engage parents in the educational process of their children last school year

Housing stability

94

households (impacting 480+ individuals) have been served in the Rental Assistance Program since its inception, including families previously homeless or highly mobile (*WR, 2016*)

School stability

24

percentage point reduction in student chronic absenteeism at Maxfield Elementary School as a result of the SPPN rental assistance program. The percentage of students who are chronically absent dropped from 62% to 38% (*WR, 2016*)

SPPN's Program Plan for the Next Biennium

To successfully deliver our results and goals, SPPN has developed a four-pronged approach that supports the whole child and family through:

- 1. Navigation System:** Navigators work to increase parent participation and involvement in the schools, increase student engagement, improve communication between teachers and families, develop kinship networks, and connect families to resources. Additional investment will help reach 300 additional children.
- 2. Family Centers:** Family centers are the places where children and families can get academic and family wraparound support.
- 3. Pathway Coordinator:** Coordinators are staff at each school that understand, align, and ensure the successful implementation of programs.
- 4. 2Gen After School Strategy:** This strategy provides out-of-school time/literacy program alignment to help children meet 3rd grade reading benchmarks, and prevent the summer learning loss, as well as wraparound supports to stabilize families, allowing them to focus on the academic success of their children. SPPN offers supports like housing and employment supports, parent groups, advocacy efforts, and more.

State funding will enable SPPN to expand – delivering these high-impact strategies at scale in the Saint Paul Promise Neighborhood.





Partner for Student Success

Partner for Student Success

Greater St. Cloud Area

2018

History of Partnership

Partner for Student Success is a collaborative initiative that began in the St. Cloud Area School District in 2010. Since that time, the Sartell-St. Stephen School District and the Sauk Rapids-Rice School District have joined in the collective impact initiative, alongside St. Cloud State University, St. Cloud Technical and Community College, the St. Cloud Area Chamber of Commerce and over 50 other organizations (including businesses, education, community agencies, funders and government) in the Greater St. Cloud area. The partnership serves over 19,000 students in grades PreK-12 with 13 communities in a tri-county area.

The partnership's aim is to increase opportunities so that all students achieve academically, engage in community, and are ready for post-secondary/career training and experiences. A particular concern is expanding opportunities for students who face the significant barriers of poverty and immigrant status.



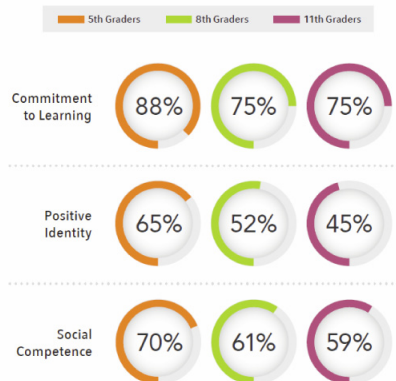
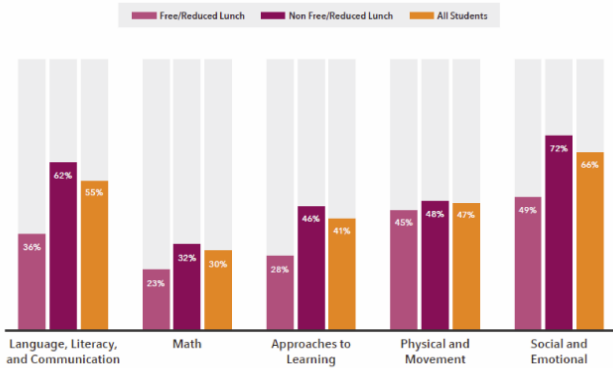
Activities Funded by State Appropriation

- Hired a part-time Data Manager to work with school and community partners to analyze local data and use data to inform programming decisions
- Continue to link student demographics and achievement data to the parent survey data to link early childhood experiences to Kindergarten readiness
- Secured a full-time executive director to convene partners and action networks
- Reached area-wide agreement on expectations for kindergarten; developed materials in English, Somali and Spanish to promote this information to parents and early childhood providers
- Held our second annual convening with a report to the community and updated baseline data for each of the community-wide benchmarks
- Continue to be a recognized member of the StriveTogether Network and have provided staff training

Moving the Needle

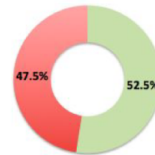
- FALL 2016 -

KINDERGARTEN ENTRY PROFILE



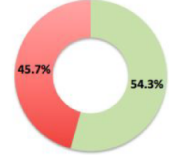
Third Grade Reading Proficiency

2016 - 52.5%
of 3rd graders were
proficient in Reading
based on the statewide
accountability tests

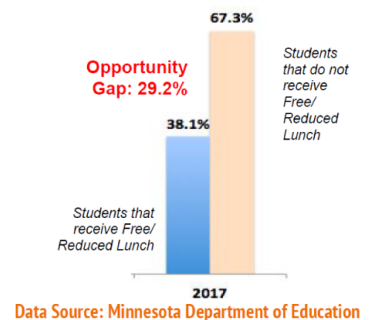
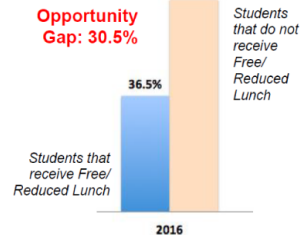


Data Source: Minnesota Department of Education

2017 - 54.3%
of 3rd graders were
proficient in Reading
based on the statewide
accountability tests



Third Grade Reading Proficiency - Opportunity Gaps



Data Source: Minnesota Department of Education

Plans for the Remainder of the Biennium

- Complete Phase Two and Phase Three analysis of the Early Childhood Experiences survey, linking demographics and achievement data to early childhood experiences
- Build upon the baseline data and analysis of the results for the three districts' Kindergarten Entry Profile (KEP), which aligns with Minnesota Department of Education-approved assessments
- Improve participation in the Early Childhood Experiences survey by parents/guardians
- Continue to educate childcare providers, private early childhood education centers and parents about the Kindergarten Expectations and Parent Toolkit
- Implement K-8 initiatives based on strategic community-wide planning with a focus on Somali-American, African-American and Free/Reduced Lunch student populations
- Work to establish experiential learning and internship opportunities for students
- Continue alignment with the three school districts' "World's Best Workforce" goals and the promotion of community support to aid in districts reaching these targets
- Support the districts' utilization of the Minnesota Career Information System with community engagement, promotion and training
- Maintain and strengthen the commitment to data accumulation and analysis

Supporting Partners

While the following entities do not seek or receive State of Minnesota appropriations, they are committed members of the Educational Partnerships Coalition (EPC). Through their involvement in the EPC, they help share best practices and guide collective strategies to deliver meaningful results for Minnesota children.

Austin Aspires



Our Vision: Austin, Minnesota, will be recognized as a leader in education with a culture of educational excellence embraced in every aspect of our community.

Our Mission: Bring together community resources and families to challenge all learners to seek excellence and equip them to achieve results through shared community vision, evidenced-based decision-making, collaborative action, and investment and sustainability. Austin Aspires is an “Emerging” member of the StriveTogether Network.

Our five goal areas are:

- All learners will be ready for kindergarten.
- All learners will be challenged to achieve their academic potential.
- Our community will support and enhance parents and mentors in their role as primary influencers of our learners.
- Our community will provide equal access to opportunities which encourage our learners to explore areas of personal interest and prepare for postsecondary education or career.
- Our community will address social, emotional, mental and physical barriers to success for all learners.

Generation Next



Our Vision: Every child has the academic, social and emotional skills to thrive in a globally-fluent world.

Our Mission: To harness the community’s knowledge, expertise and action to ensure every child can thrive.

Serving Minneapolis and St. Paul, Generation Next works across multiple sectors to influence, promote and sustain academic, social and emotional well-being from cradle to career. Leadership Council members are committed to positively change their attitudes, knowledge, behaviors, skills, perceptions, beliefs, practices, and relationships to create the conditions for success.

Generation Next works on six key goals with an emphasis on eliminating predictable disparities between racial and ethnic groups:

- Ready by Kindergarten
- Grade 3 Reading Proficiency
- Grade 8 Mathematics Proficiency
- Social Emotional Learning by 8th Grade
- High School Graduation
- Postsecondary Attainment

Growth & Justice



As a leading statewide policy research organization and education equity advocate, Growth & Justice has been at the forefront of a Minnesota movement toward more holistic, birth-to-career, community-based systems for student success. Since 2006, our policy reports and media commentary have highlighted the importance of local control and coordination of all the community resources necessary for ALL our children to realize their potential. Growth & Justice was instrumental in helping form the Educational Partnerships Coalition in 2015, bringing

together in common cause the urban Promise Neighborhood models in Minneapolis and St. Paul, and the emerging StriveTogether communities in Greater Minnesota. Through storytelling and commentary in news media, as well as direct messaging to decision-makers, Growth & Justice will continue to be a strong champion for the EPC.



Collectively, the neighborhoods and communities served by the Educational Partnerships Coalition are home to more than **61,000 Minnesota children.**

Thank you

for your support in helping youth and families across our state thrive.

While we have accomplished so much with your support, there are more children and families in need.

We look forward to continuing to work with you to close Minnesota's opportunity gap.



QUESTIONS?

PLEASE CONTACT:



Hylden Advocacy & Law

Sarah Clarke
Lobbyist

EMAIL | sclarke@hyldenlaw.com
MOBILE | 952.201.4654

METRO OFFICE | 612.206.3766 • GREATER MINNESOTA OFFICE | 320.834.2453

