

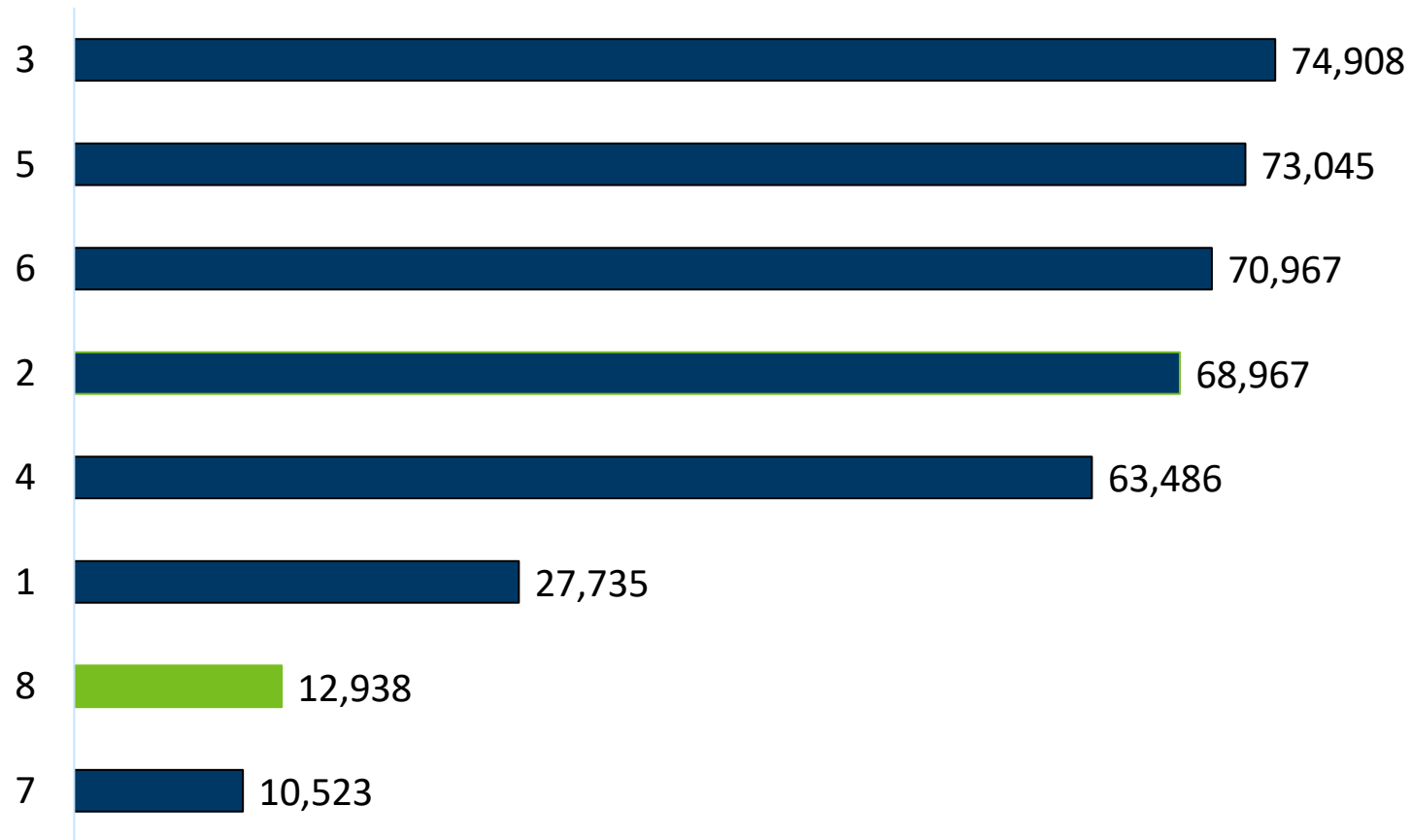


# Population Changes in Congressional District 8

Susan Brower | Minnesota State Demographer

# Growth in Minnesota's U.S. Congressional Districts

Population Change by Congressional District, 2010-2020



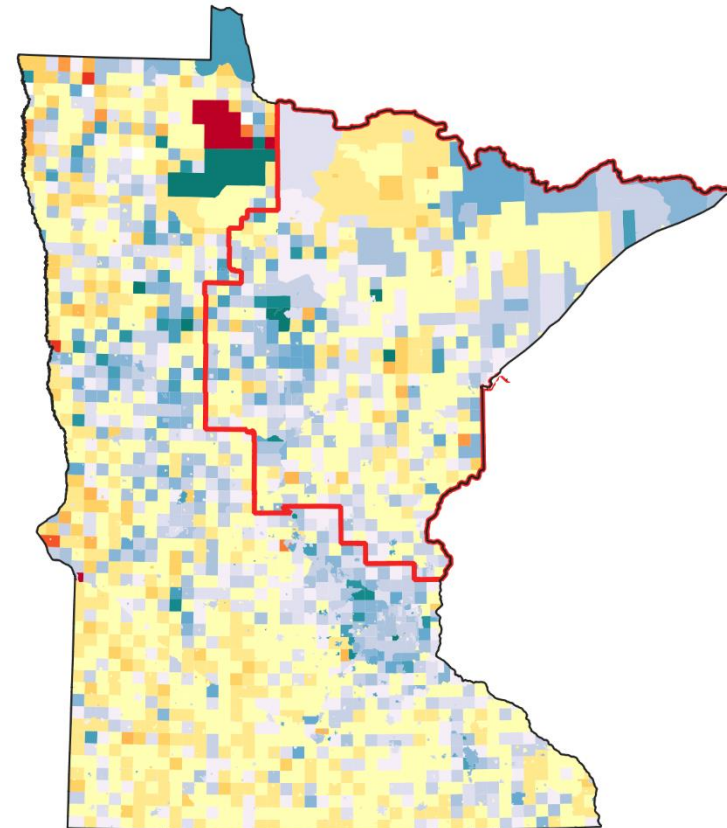
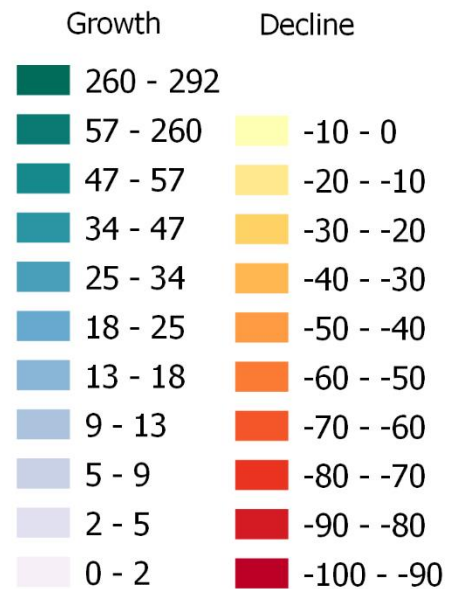
Ideal population size:  
**713,312**

CD 8 2020 Population:  
**675,929**

Difference:  
**-37,383**

# Percent Change in the Cities and Townships of Congressional District 8

Population Percent Change  
2010 to 2020



## 2020 Population in CD 8 by County

Aitkin County	15,697		Itasca County	45,014
Beltrami County	15,482		Kanabec County	16,032
Carlton County	36,207		Koochiching County	12,062
Cass County	30,066		Lake County	10,905
Chisago County	56,621		Mille Lacs County	26,459
Cook County	5,600		Morrison County	34,010
Crow Wing County	66,123		Pine County	28,876
Hubbard County	21,344		St. Louis County	200,231
Isanti County	41,135		Wadena County	14,065

Population in Tribal Areas	CD1	CD2	CD7	CD8	State Total
Bois Forte Reservation and Off-Reservation Trust Land				984	984
Fond du Lac Reservation and Off-Reservation Trust Land				4,180	4,180
Grand Portage Reservation and Off-Reservation Trust Land				618	618
Ho-Chunk Nation Reservation and Off-Reservation Trust Land	0				0
Leech Lake Reservation and Off-Reservation Trust Land				11,388	11,388
Lower Sioux Indian Community			534		534
Mille Lacs Reservation and Off-Reservation Trust Land				4,767	4,767
Minnesota Chippewa Trust Land			1	7	8
Prairie Island Indian Community and Off-Reservation Trust Land		310			310
Red Lake Reservation			5,506	0	5,506
Shakopee Mdewakanton Sioux Community and Off-Reservation Trust Land		779			779
Upper Sioux Community and Off-Reservation Trust Land			120		120
White Earth Reservation and Off-Reservation Trust Land			9,726		9,726

# Population Changes in Congressional District 8

	2010	2020	Difference	Percent Difference
White	615,773	602,106	(13,667)	-2%
Black or African American	5,755	7,605	1,850	24%
Native American	17,395	18,308	913	5%
Asian	3,797	4,844	1,047	22%
Native Hawaiian and Other Pacific Islander	152	164	12	7%
Some Other Race	255	1,974	1,719	87%
Multiple Races	11,281	28,735	17,454	61%
Hispanic or Latino	8,583	12,193	3,610	30%
Total	662,991	675,929	12,938	2%

# Data Considerations

- The 2020 Census was conducted during a world-wide pandemic, which required the Census Bureau to make several adjustments to the operational plan.
- This is the first census to implement Differential Privacy (DP) as the Disclosure Avoidance System (DAS) to protect respondents' confidentiality.
- To-date no major errors have been uncovered, but the State Demographic Center will continue to monitor quality issues as more information becomes available.

# Thank you!

**Susan Brower, PhD**

*[susan.brower@state.mn.us](mailto:susan.brower@state.mn.us)*