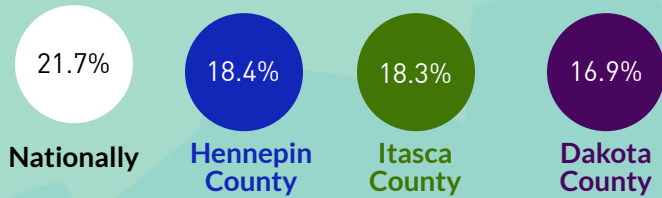


# BUILDING COMMUNITY RESILIENCE IN MINNESOTA

ACEs are an American health problem.

## Adverse Childhood Experiences (ACEs)

% children with 2+ ACEs:



## Adverse Community Environments (ACEs)

include:

- ✓ Poor housing quality & affordability
- ✓ Violence
- ✓ Discrimination
- ✓ Lack of opportunity & economic mobility

Together, these are the "**Pair of ACEs**".  
**How do they show up?**

% children 0-17 who...

...have experienced **economic hardship**  
21% 22% 20%

...witnessed **domestic violence**  
6% 4% 5%

...lived with an adult with **mental illness**  
8% 8% 8%

...had a **parent in jail**  
8% 7% 8%

...whose guardian **abuses substances**  
9% 10% 9%

## Adverse Childhood Experiences

## Adverse Community Environments



Rate of **violent crimes** (per 100,000 ppl)

**449 crimes**

**164 crimes**

**141 crimes**



% children living in **poverty**

**14%**

**15%**

**7%**



% **severely unaffordable or unsafe homes** (monthly costs over 50% of income, no kitchen, no plumbing, or over-crowding)

**16%**

**13%**

**11%**



% families with **limited access to a grocery store**

**27%**

**16%**

**33%**



Rate of **drug overdose** deaths (per 100,000 ppl)

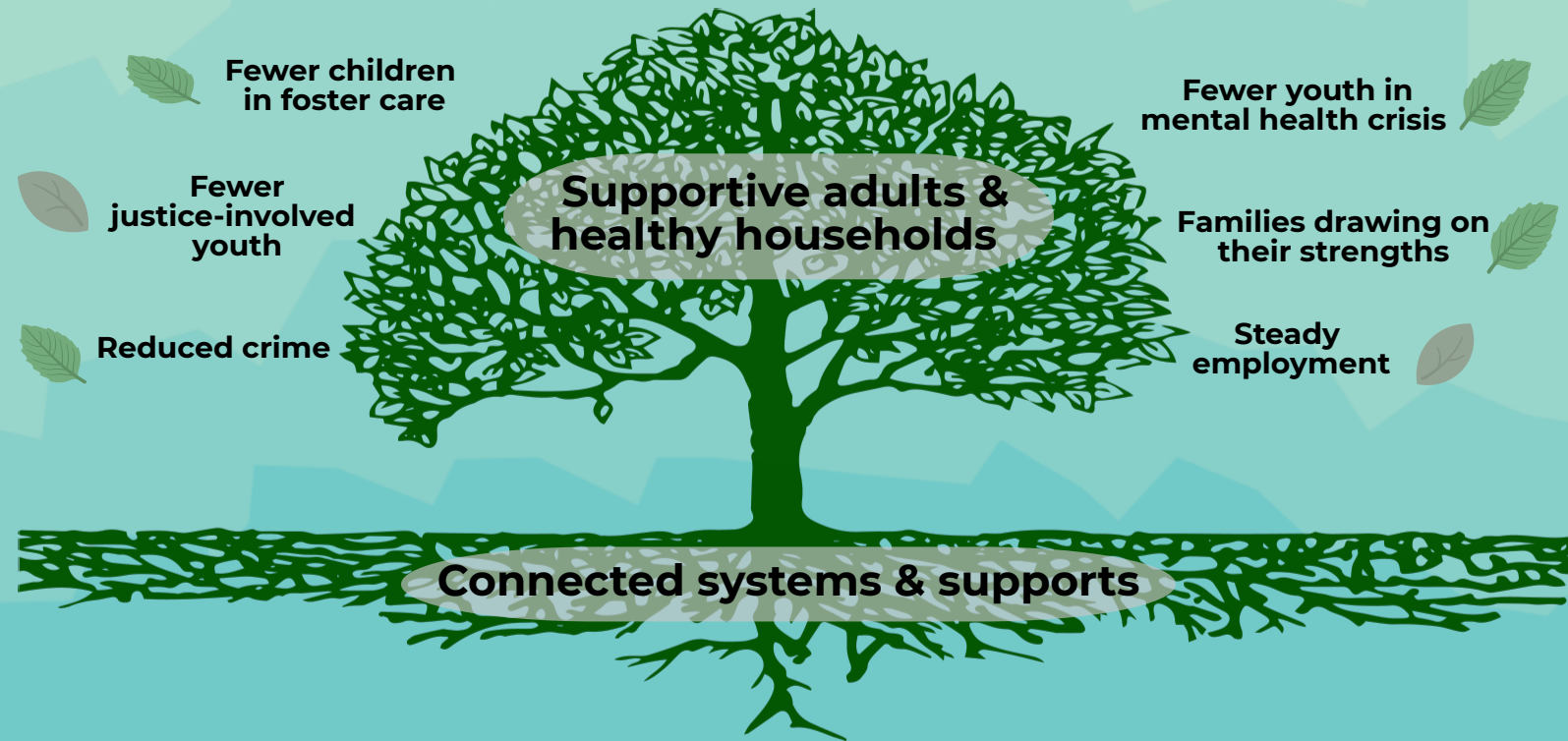
**16**

**10**

**10**

# BUILDING COMMUNITY RESILIENCE IN MINNESOTA

**BCR is working to transform program, practice, and policy across systems to improve the health and life outcomes of children, families, and communities.**



**We can build community resilience by:**



**Ensuring all children have a medical home**

**Hennepin County**

**55%**

% of children have a medical home

**Itasca County**

**60%**

**Dakota County**

**58%**



**Guaranteeing access to good, nutritious food**

**27%**

% of families do not have consistent access to healthy food

**28%**

**26%**



**Providing school-based healthcare centers with mental health services**

**5**

# of these centers in our community

**0**

**0**



**Promoting working class job growth**

**2.2%**

% job growth over 2017-2018

**N/A**

**N/A**



**Ensuring access to jobs**

**69%**

% of workers have <30 minute commute

**71%**

**65%**



**Providing access to affordable housing**

**70%**

% of families spend <30% of income on housing costs

**74%**

**75%**

[go.gwu.edu/BCR](https://go.gwu.edu/BCR)



@ResilNation



[go.gwu.edu/BCRvideos](https://go.gwu.edu/BCRvideos)



"Pair of ACEs" group

Go to [go.gwu.edu/bcrsnapcite](https://go.gwu.edu/bcrsnapcite) for data source information.