

Pilot Program for State Health Care Programs:

January 31, 2017

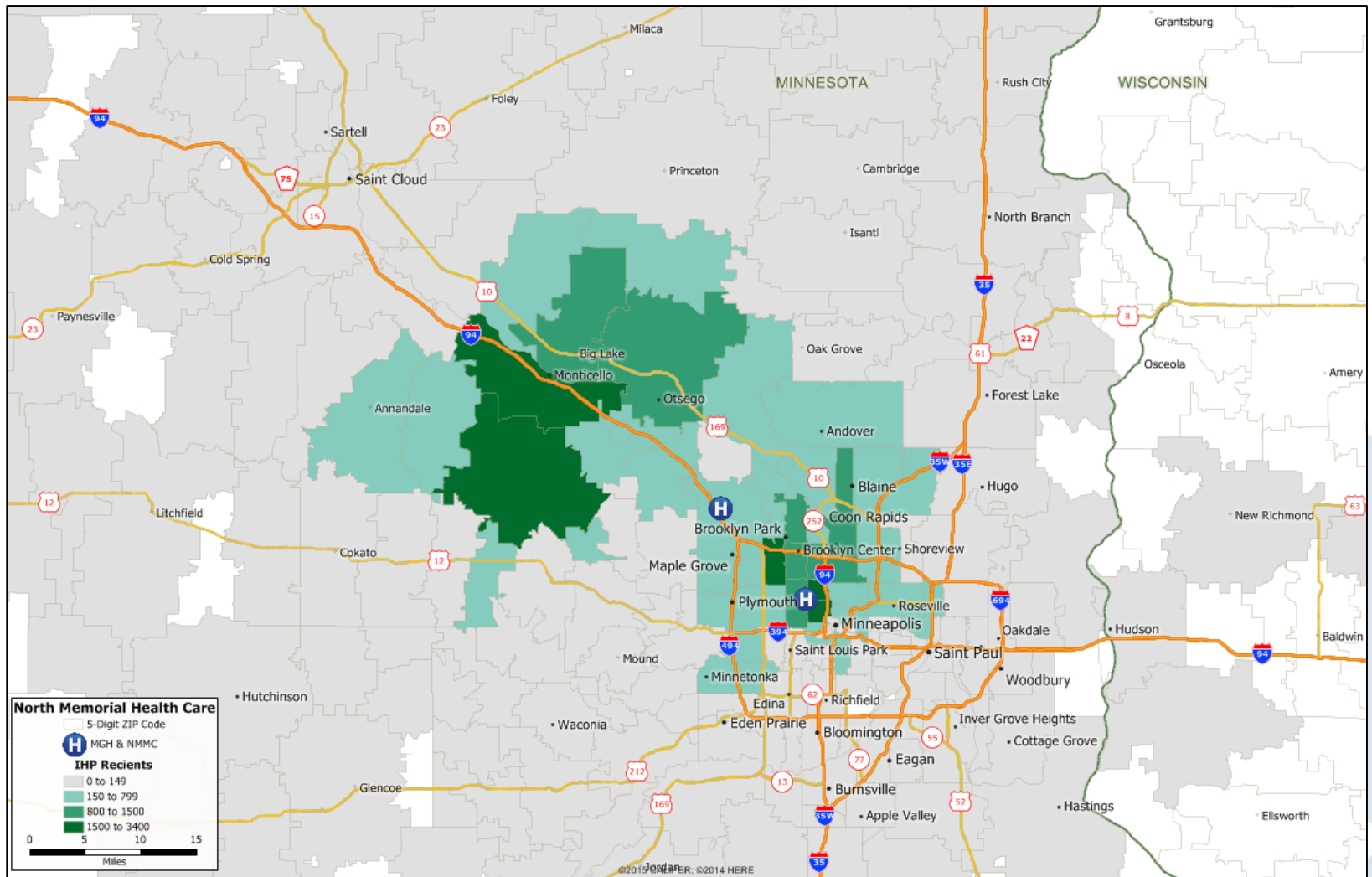


North Memorial
Health Care

North Memorial IHP at a Glance

- Participant in the IHP Program since 2013
- 30,000+ attributed members in 2016
- High quality, Low Cost provider network including:
 - Broadway Family Medicine Clinic
 - Multicare Associates
 - North Clinic
 - North Memorial Health Care
 - Northwest Family Physicians North Memorial Health Care
 - Stellis Health (FKA Buffalo Clinic)
- Successfully achieved savings in 2013, 2014, and 2015 (2016 TBD)

North Memorial IHP Service Area



Care Model Innovation: Community Paramedic

- Management of high-risk populations through:
 - Care transitions support
 - ✓ Improved experience
 - ✓ Readmission focus
 - ✓ Increased primary care access
 - Chronic disease management
 - ✓ Increased primary care access
 - ✓ In home disease monitoring
 - Community engagement
 - ✓ Education
 - ✓ Facilitating connections to community-based resources
 - ✓ Increased primary care access



Care Model Innovation: Community Partnerships

- **Portico Healthnet** – Pilot program supporting continuous enrolment
- **Vail Place** – Integration of services supporting members with SPMI
 - Vail Place case management on site at North Memorial Medical Center and at out-patient mental health clinic
 - NMHC Community Paramedic staff on site at Vail Place club house for health screenings, education, and primary care discussions
- **Turning Point** – NMHC staff on site extension of primary care services
- **Minnesota Department of Health** – Health screenings and education
- **YMCA, Second Harvest Heartland, North Market (Pillsbury United Communities), Public Schools...**

Challenges/Opportunities

- **Member Churn** – Retrospective attribution models present challenges:
 - Tracking member activity/cost
 - Financial model recognition
- **Timeliness of Incentive Payments**- Makes the current pace of experimentation and change unsustainable
 - Many services not reimbursed / under reimbursed in FFS payment model
 - Scalability, costs associated with care model redesign make it difficult scale programs beyond pilot phase