

Metropolitan Council

2022 Capital Investment Requests

metro council.org



Metropolitan Council Requests

- \$60 million for busway capital improvement program
- \$5 million for inflow & infiltration grant program
- \$3 million for regional parks and trails grant program

Busway Capital Improvement Program

Public transit

Serves the highest ridership corridors best when there's

- Faster, frequent, and more reliable service
- Limited stops at enhanced stations



Bus rapid transit provides



Improved Service



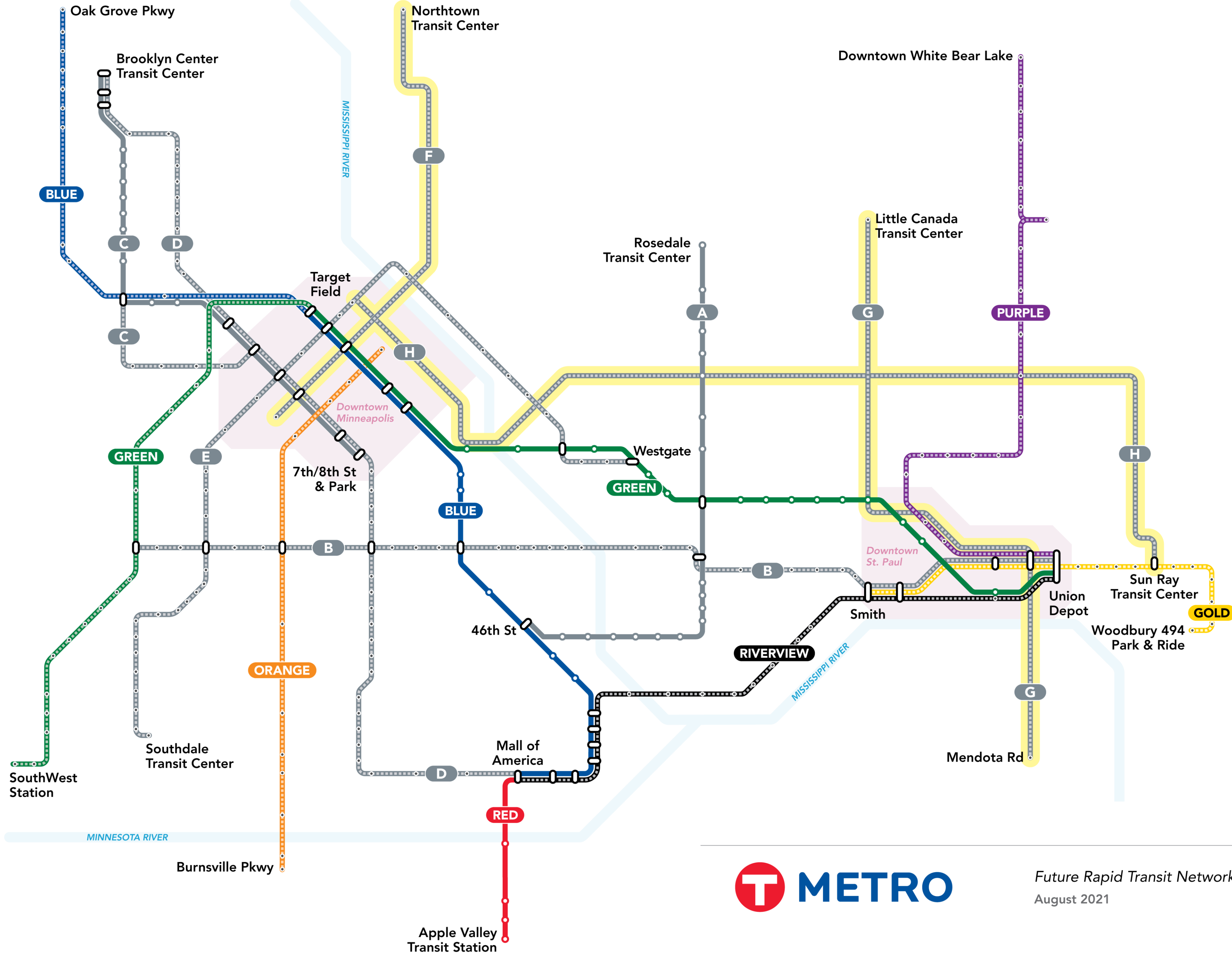
Enhanced Facilities

=
Attractive,
reliable,
efficient
service

Busway capital improvement program



- **\$60 Million**
 - ~ \$150 Million in initial federal funds would be leveraged
- F Line (Central Avenue/University to Northtown Mall)
- G Line (Rice/Robert Street West St. Paul to Little Canada)
- H Line (Como/Maryland Minneapolis to Sun Ray)
- For environmental work, right-of-way acquisition, design, construction, and other potential bond-eligible uses
- Expands network of fast, frequent, all-day transitway service



Future Rapid Transit Network
August 2021

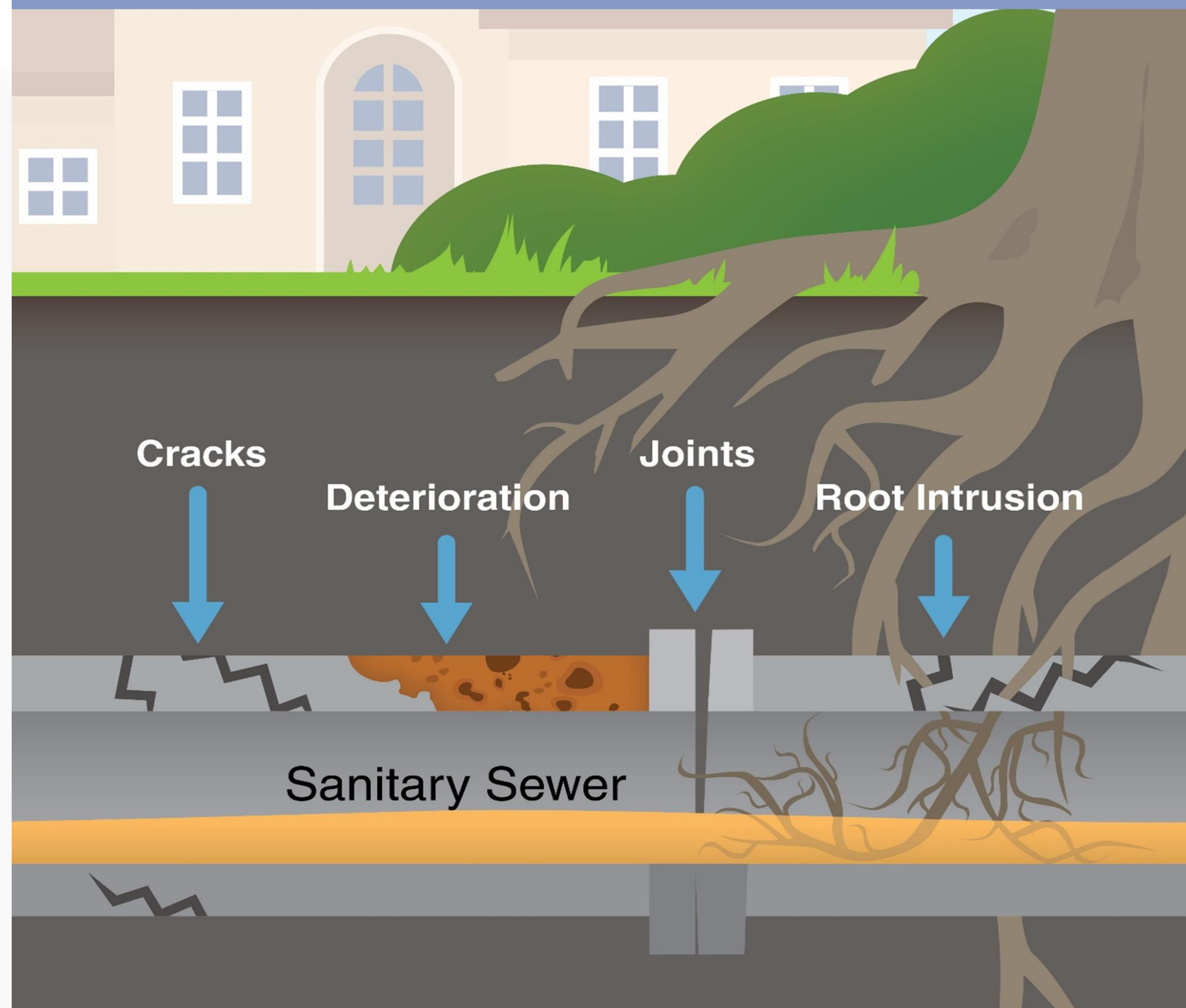


Inflow & Infiltration Grant Program

Inflow and infiltration

Keep clear water out of the wastewater

Clear water – stormwater and groundwater – through I/I sources enters the wastewater systems. Excessive I/I increases the need to build larger and more expensive sewer pipes and treatment facilities.



Clear water in the wastewater system costs in many ways:

- Unnecessarily treats clear water along with wastewater
- Causes sewer backups into homes
- Causes sewer overflows into rivers and lakes
- Increases sewers and utility fees
- Increases the need for larger and more expensive sewer pipes and treatment facilities

Wastewater system

Metropolitan Council

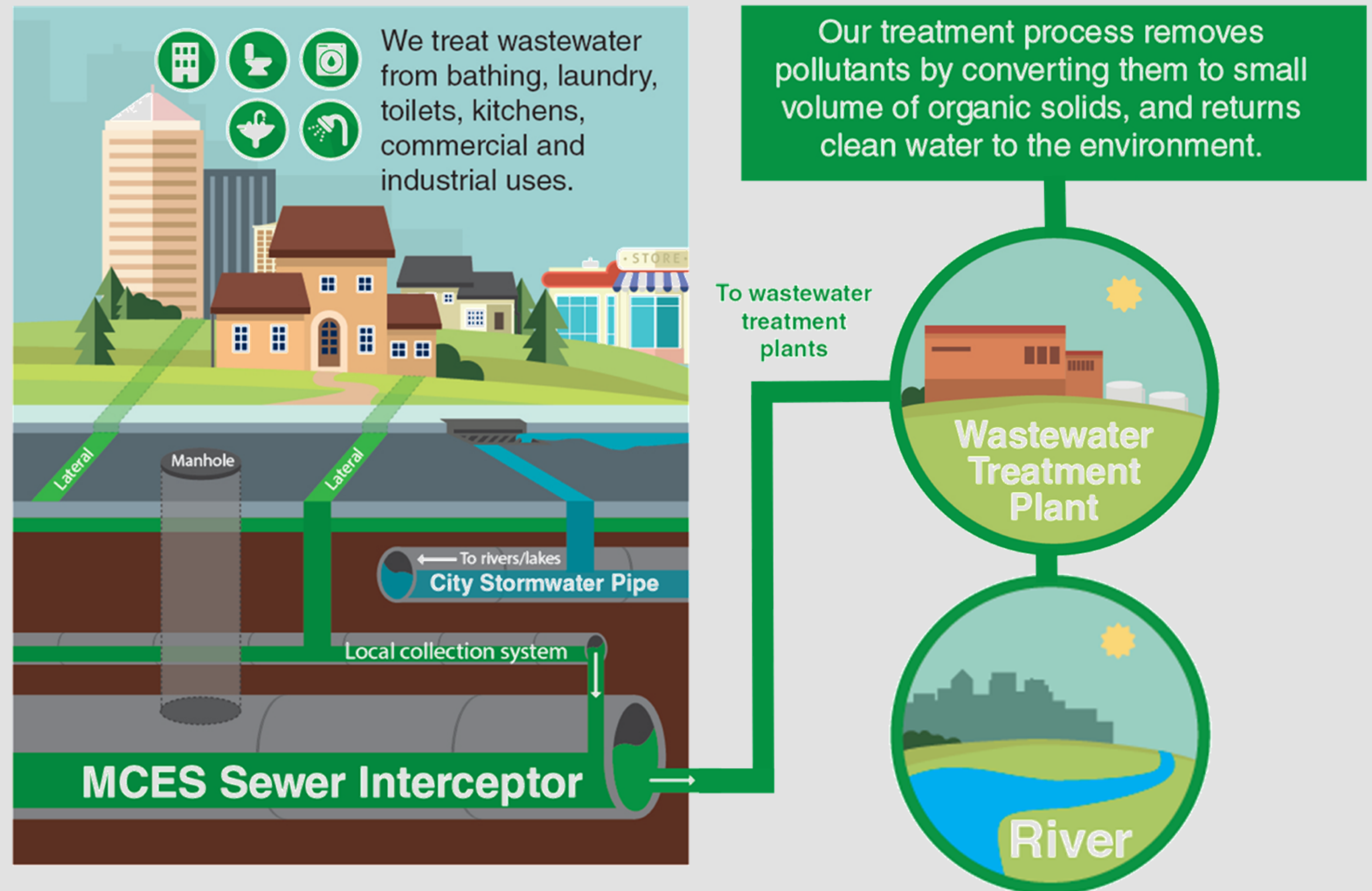
- Regional infrastructure

Cities and townships

- Connect from the street to regional infrastructure

Property owners

- Connect from the property to the street



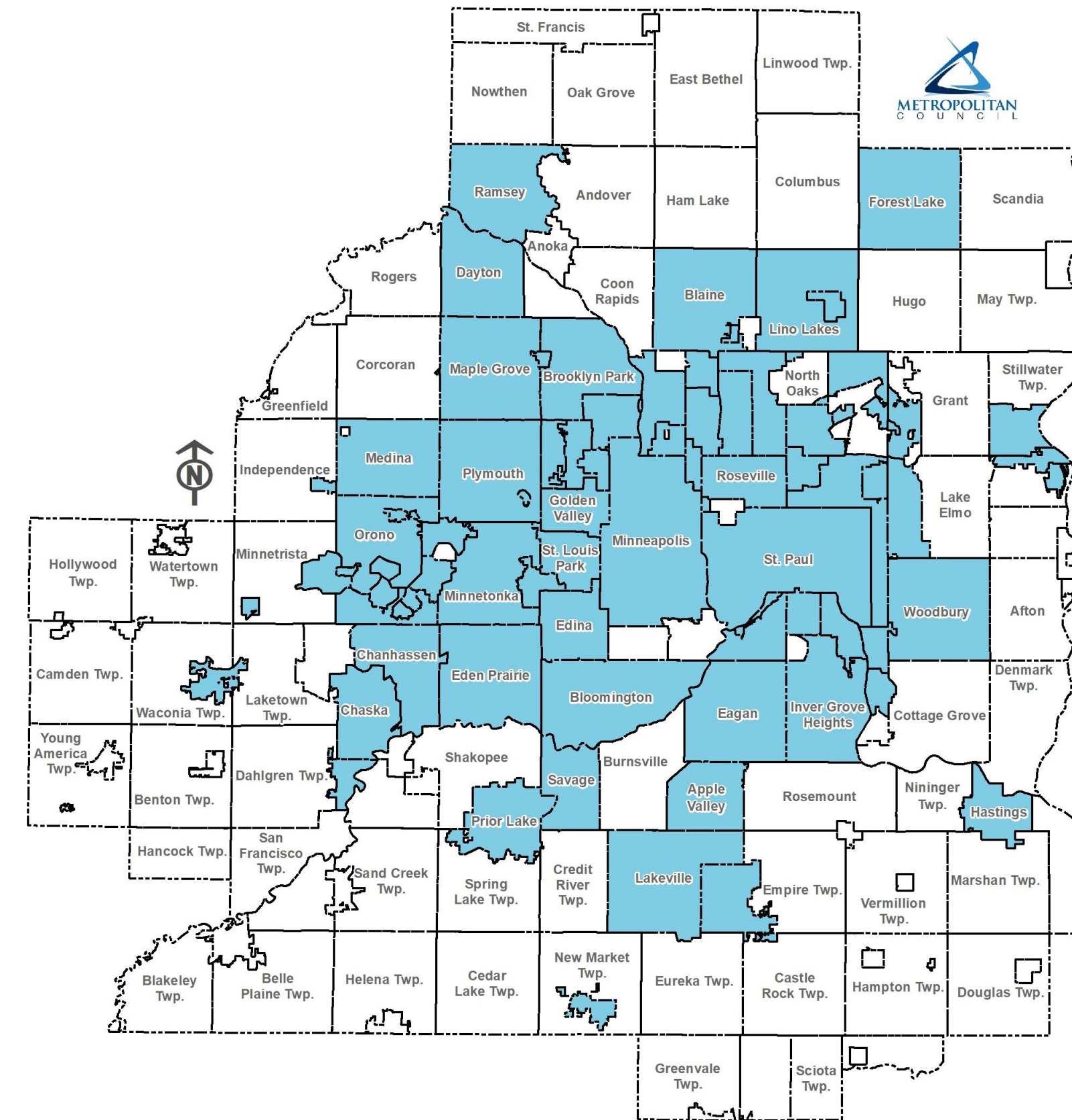
Repair pipes that connect to regional infrastructure

Municipal infrastructure capital improvements grant program

- Grants to municipalities to reduce clear water in the municipal wastewater collection system
- Grant funding covers up to 50 percent of the inflow and infiltration portion of project cost

Over 80 cities and townships

Apple Valley • Arden Hills • Bayport • Birchwood • Blaine •
Bloomington • Brooklyn Center • Brooklyn Park • Carver •
Centerville • Chanhassen • Chaska • Columbia Heights • Crystal •
Dayton • Deephaven • Eagan • Eden Prairie • Edina • Elko-New
Market • Excelsior • Farmington • Forest Lake • Fridley • Golden
Valley • Greenwood • Hastings • Hopkins • Inver Grove Heights •
Lakeville • Lauderdale • Lexington • Lilydale • Lino Lakes • Little
Canada • Long Lake • Mahtomedi • Maple Grove • Maple Plain •
Maplewood • Medicine Lake • Medina • Mendota • Mendota
Heights • Minneapolis • Minnetonka • Minnetonka Beach • Mound •
Mounds View • New Brighton • New Hope • Newport • North St.
Paul • Oak Park Heights • Oakdale • Orono • Osseo • Plymouth •
Prior Lake • Ramsey • Robbinsdale • Roseville • Savage •
Shoreview • Shorewood • South St. Paul • Spring Park • St.
Anthony • St. Bonifacius • St. Louis Park • St. Paul • St. Paul Park •
Stillwater • Spring Park • Tonka Bay • Vadnais Heights • Waconia •
Wayzata • West St. Paul • White Bear Township • Woodbury



Regional Parks & Trails Grant Program

Metropolitan Parks Act, 1974

- Identify generally the areas, which together with State facilities, will meet the outdoor recreation needs of the people of the metropolitan area
- Establish criteria and priorities for the allocation of funds for acquisition and development
- Make grants of capital funds to the Regional Park Implementing Agencies to implement the Regional Parks Policy Plan



Improving parks across the region

- \$3 Million +
 - 2/3 match from regional funds
 - Funds pass through to parks implementing agencies
- Improving trails, beaches, facilities, and accessibility features to meet wide-ranging needs



Regional parks system

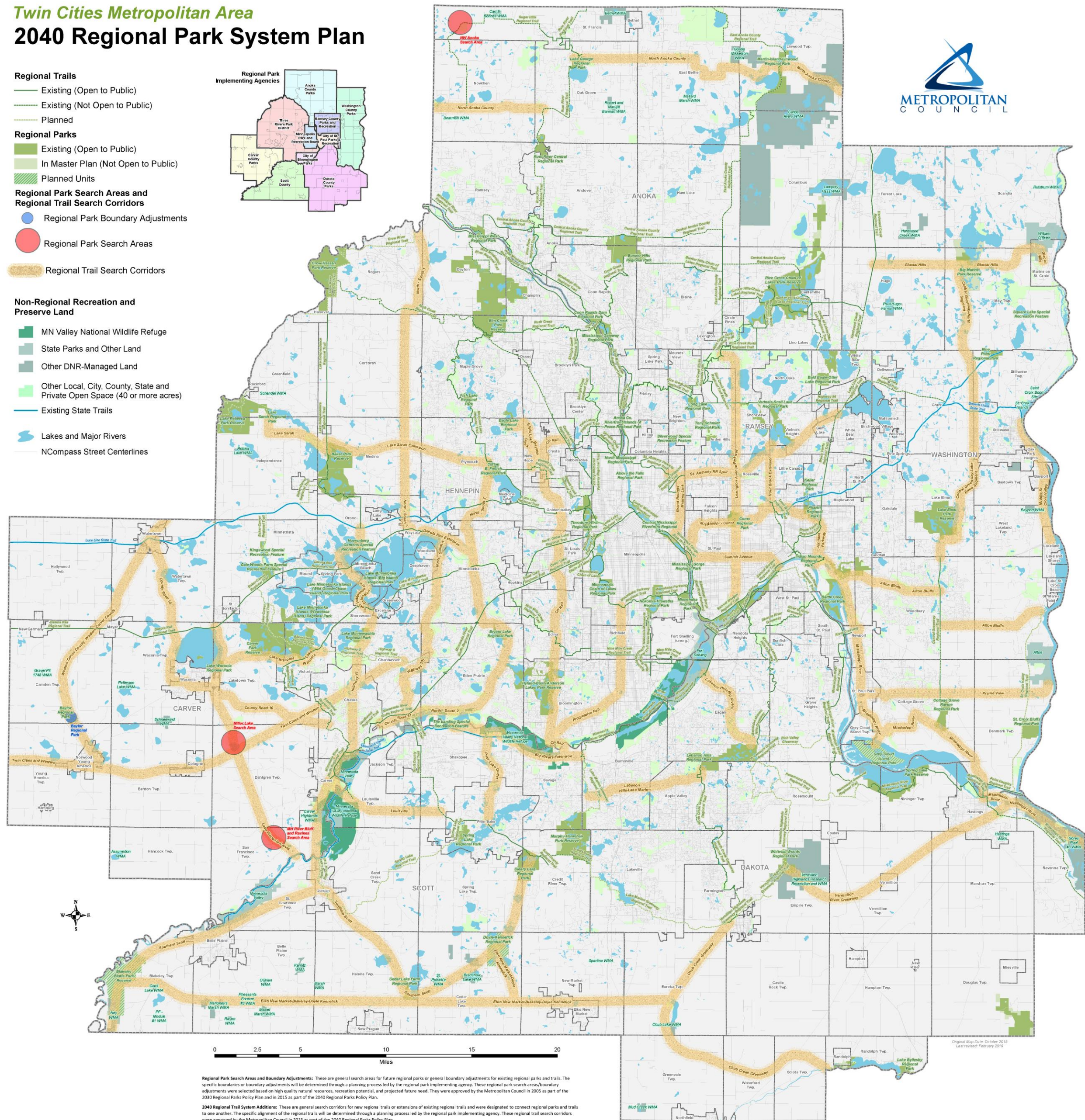
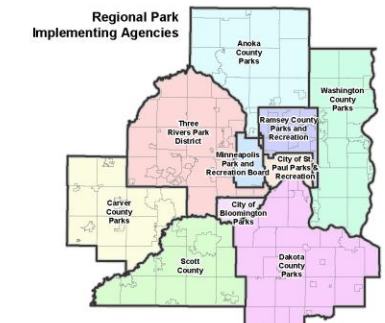
The region's parks and trails

- Connect people to the outdoors
- Protect natural resources
- Make sure everyone in the region has access and feels welcomed

Twin Cities Metropolitan Area 2040 Regional Park System Plan



- Regional Trails**
- Existing (Open to Public)
 - Existing (Not Open to Public)
 - Planned
- Regional Parks**
- Existing (Open to Public)
 - In Master Plan (Not Open to Public)
 - Planned Units
- Regional Park Search Areas and Regional Trail Search Corridors**
- Regional Park Boundary Adjustments
 - Regional Park Search Areas
 - Regional Trail Search Corridors
- Non-Regional Recreation and Preserve Land**
- MN Valley National Wildlife Refuge
 - State Parks and Other Land
 - Other DNR-Managed Land
 - Other Local, City, County, State and Private Open Space (40 or more acres)
 - Existing State Trails
 - Lakes and Major Rivers
 - NCompass Street Centerlines



Regional Park Search Areas and Boundary Adjustments: These are general search areas for future regional parks or general boundary adjustments for existing regional parks and trails. The specific boundaries or boundary adjustments will be determined through a planning process led by the regional park implementing agency. These regional park search areas/boundary adjustments were selected based on high quality natural resources, recreation potential, and proposed future needs. They were approved by the Metropolitan Council in 2015 as part of the 2040 Regional Parks Policy Plan and in 2015 as part of the 2040 Regional Parks Policy Plan.

2040 Regional Trail System Additions: These are general search corridors for new regional trails or extensions of existing regional trails and were designed to connect regional parks and trails to one another. The specific alignments of the regional trails will be determined through a planning process led by the regional park implementing agency. These regional trail search corridors were approved by the Metropolitan Council in 2015 as part of the 2040 Regional Parks Policy Plan.

Regional Trail Search Corridors: These are general search corridors for new regional trails and were designed to connect regional parks and trails to one another. The specific alignment of the regional trails will be determined through a planning process led by the regional park implementing agency. "Proposed" trails from past iterations are also now classified as regional trail search corridors. These regional trail search corridors were approved by the Metropolitan Council as part of various Regional Parks Policy Plans over the years and also affirmed in 2015 as part of the 2040 Regional Parks Policy Plan.

Thank you!

metro council.org

