

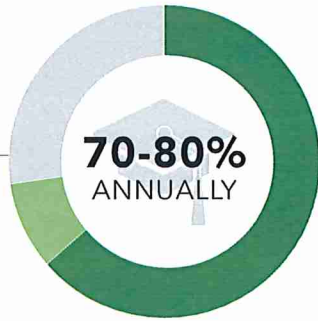
NEW BEGINNINGS

AT EAST CREEK FAMILY CENTER
SOUTHWEST METRO INTERMEDIATE DISTRICT 288

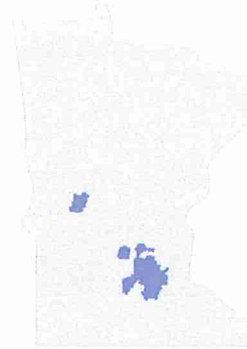
OUR IMPACT

2011-2017

GRADUATION



EXPANDED REACH



20 Districts served since 2011

SouthWest Metro is **1 of 5** Districts in the Twin Cities Metro area that offers educational support, parenting classes, and child care for pregnant and parenting teens.

Anoka-Hennepin
Minneapolis
St. Paul
Intermediate District 287
Intermediate District 288

PROVEN RESULTS



● Increased Attendance 60%

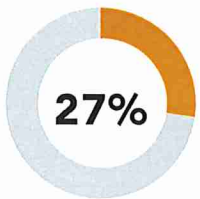


● Earned High School Credits 77%

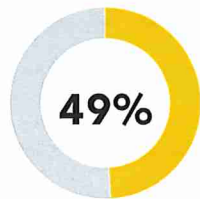


● Delayed Second Pregnancy 97.5%

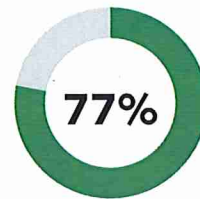
VARIED BACKGROUNDS



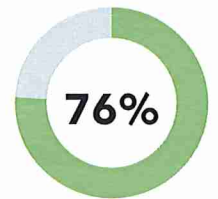
Active IEP
or 504 Plans



Students of Color*

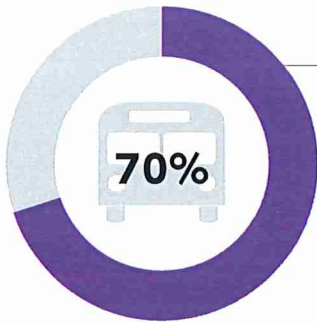


Reported
Mental Health
Issues (2014-2017)



Free / Reduced
Meals

GROWTH POTENTIAL



70% of New Beginnings students rely on district-provided transportation services

An overwhelming number of girls would be unable to regularly attend without district-provided transportation. Expanding these resources would reach more girls in need and ensure higher graduation rates among teen parents.

DARREN KERMES
SUPERINTENDENT

(952) 567-8102 | dkermes@swmetro.k12.mn.us

* Students of color were defined as students who identified themselves as African American, Asian/Pacific Islander, Hispanic/Latinx, and/or Native American/Alaska Native. Students can self-identify in multiple categories of ethnicity.



**SOUTHWEST
METRO** INTERMEDIATE
DISTRICT 288

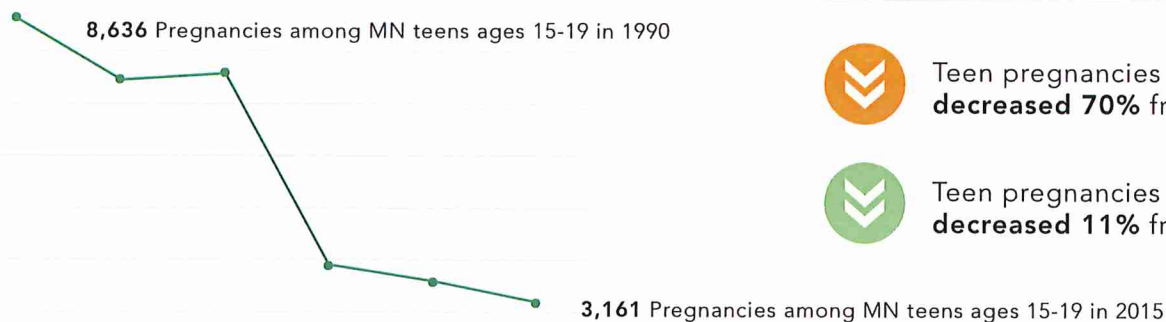
SWMETRO.K12.MN.US

@SWMetro



OUR POTENTIAL

LOWER DEMAND = LOWER COST¹



Teen pregnancies in Minnesota **decreased 70%** from 1990 to 2015

Teen pregnancies in Minnesota **decreased 11%** from 2014 to 2015

NATIONAL EFFECTS



25% of teen girls in the U.S. will get pregnant at least once by age 20²



50% of teen mothers receive a high school diploma by age 22³



17% of girls with a history of poverty were pregnant at least once by age 17⁴



60% of teen mothers do not finish high school on time⁵

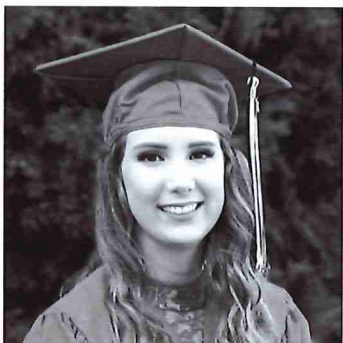
OUR STUDENTS



JOELINE

I knew I was pregnant by the time school started last fall. My mom called my high school to find out if I could attend New Beginnings in Chaska, but we were told that my district did not transport there. I do not have my own car, but my mom can sometimes take me to the program before and after school. I usually get to school an hour early and have to wait as long as an hour after school for my ride home. There are many days, however, when this option doesn't work - I have failed classes for missing too much school and I am now unable to graduate with my class and will need to return to school next fall to graduate. I've known of girls in the past that have struggled because they didn't provide transportation.

"I felt more comfortable coming here, because I wouldn't stand out. The teachers are always willing to help you and the other girls are friendly and welcoming."



NICOLE

I remember being 17 and scared of going to my home school because I would be judged. Everyone knew. It was a small town, only twenty-five minutes away, but I was never given the option of bussing. My mom had to drive me because I was a new driver and so scared with a newborn in the backseat. I just wasn't comfortable. When it snowed, I was hardly there. Some days I didn't have the motivation. Other days, my mom couldn't drive me. My attendance lacked, I barely graduated on time, and I missed out on a lot of educational opportunities in the end.

"New Beginnings was here through it all. It felt good to have someone so knowledgeable and inspiring to teach us. It still influences my attitudes and decisions today."

¹ Minnesota Department of Health (MDH), Center for Health Statistics, Minnesota Health Statistics Annual Summary, 2015.

² Author tabulations based on data in Curtin, S.C., Abma, J.A., Ventura, S.J., & Henshaw, S.K. (2013). Pregnancy Rates for U.S. Women Continue to Drop. NCHS Data Brief, 136, 1-8. Retrieved from: <http://www.cdc.gov/nchs/data/databriefs/db136.htm>.

³ Perper K, Peterson K, Manlove J. Diploma Attainment Among Teen Mothers. Child Trends, Fact Sheet Publication #2010-01: Washington, DC: Child Trends; 2010.

⁴ Garwood, S. K., Lara, G., Melissa, J.-R., Katie, P., & Brett, D. (2015). More than Poverty—Teen Pregnancy Risk and Reports of Child Abuse Reports and Neglect. *The Journal of Adolescent Health*: Official Publication of the Society for Adolescent Medicine, 57(2), 164–168. <http://doi.org/10.1016/j.jadohealth.2015.05.004>

⁵ The National Campaign to Prevent Teen and Unplanned Pregnancy, "Preventing Teen Pregnancy is Critical to School Completion," Briefly... (Washington, D.C.) July 2010.



SOUTHWEST METRO

INTERMEDIATE DISTRICT 288

2017-2018 PROGRAMS

ADULT BASIC EDUCATION

Citizenship Preparation
English as a Learned Language
Family Literacy / PACE
Food Safety Management
GED Preparation & Testing

ALTERNATIVE EDUCATION

Catalyst
CLAS (*Community Learning & Assessment Services*)
Credit Recovery
NEW! Freedom Academy
New Beginnings
ODINED (*Online Learning*)
Reflections
SouthWest Metro High School (ALC)
Targeted Services

CAREER & TECHNICAL EDUCATION

Agricultural Careers
Automotive Repair
CDA (*Child Development Associate Credential*)
Computer Repair
Computer Networking
Construction Technology
Cosmetology
Criminal Justice
Food Service Certification
Graphic Design & Print
Intro to Education / Multicultural Education
Medical Careers
Photography

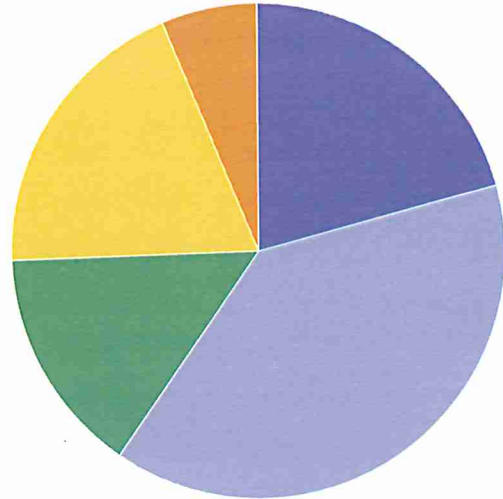
SPECIAL EDUCATION PROGRAMS

RISE (I, II, & III)
Stepping Stones
Oasis
PRIDE
ASCENT
FOCUS
ATTAIN
LinC
Passages
Transitions

RESIDENTIAL & CORRECTIONAL

Carver County Jail
JAF (*Juvenile Alternative Facility*)
NEW! Lakeside Academy

APPROXIMATELY **4,590** STUDENTS
2016-2017 SCHOOL YEAR



- Adult Basic Education 21%
- Alternative Programs 39%
- Career & Technical Education 15%
- Special Education 19%
- Residential & Correctional 6%

SPECIAL EDUCATION SERVICES

First Step / PAES Lab
(*Practical Assessment Exploration System*)
Itinerant Services
Behavior Analyst (BCBA)
Audiologist
Homebound Instructor
Interagency Resource Specialist (Help Me Grow)
Physical Therapist
Occupational Therapist
Teacher of the Deaf & Hard of Hearing
Teacher of the Physically Impaired
Teacher of the Blind & Visually Impaired / Brailist
Tactile Production

OTHER PROGRAMS & SERVICES

East Creek Child Care
Professional Development
Pearson VUE Testing Center