

OAKDALE POLICE STATION



SUMMARY

The police station has occupied its current space since 1992 and since that time, the department has grown from 20 to 32 sworn officers.

Many modifications have been required over time to adapt to the increases in staffing levels, and the department has found innovative ways to utilize every square foot available to them; however, the department's operational needs are now beyond capacity.

REGIONAL SIGNIFICANCE

In addition to serving local residents, the Oakdale Police Department is a key player in many regional initiatives including:

- East Metro Sex Trafficking Task Force
- Washington County Mobile Field Force
- Washington County SWAT team
- Tartan High School, school resource officers (SRO)

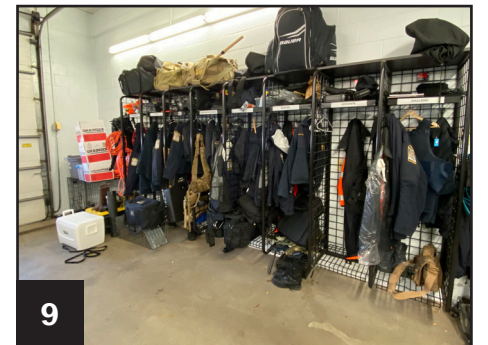
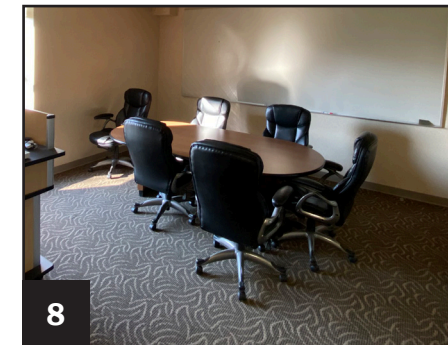
EFFICIENCY

1. Gear, including weapons, AED's, radios/pagers, and equipment bags, are located in separate locations throughout the facility, which eats up time at the beginning and end of each shift.
2. Vehicles are parked outside at all times. This causes significant inefficiencies during snow events as officers spend their time warming, clearing, and moving vehicles.
3. Records and evidence are stored in four separate locations; only two of which are in the current police station. Additional records storage is located off-site at the public works facility and a rented storage locker in the city.
4. There is no dedicated training space at the facility, requiring officers to travel as far as 50 miles one-way to participate in required range certification and tactical trainings, up to 14 per year in total.



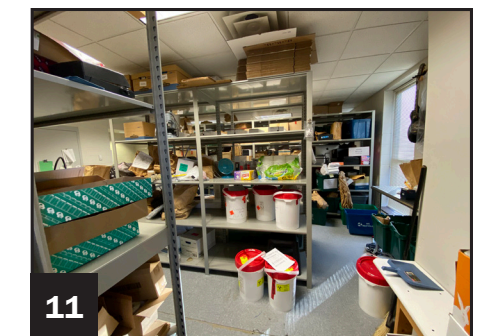
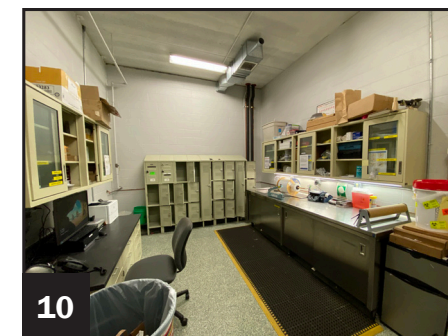
SPACE

5. Restroom and break spaces do not adequately serve staffing levels. There are two restroom stalls each for men and women (one on each floor). Additionally, the storage closet that has been re-purposed into a lunch/break room holds 2-3 people at a time.
6. Office space is scarce as many have been converted to fit other needs including the addition of a health room, charging room for tasers and radios, a weapon cleaning and maintenance space, and for general equipment storage.
7. Officers are each allotted one very small cubby to store paperwork, reference books, or any other work-related materials in, which often is not adequate.
8. The sole meeting space available seats six people, which is inadequate in the event of a large-scale investigation. Additionally, the space is not secured and is located in a heavy traffic area.
9. Locker room facilities are at maximum capacity, and do not provide officers with the space needed to sufficiently store personal effects. Additionally, equipment lockers are often shared as there is not space to add more.



SAFETY

10. Evidence enters the facility on the ground floor, where it is brought into a small locker area to be cataloged and secured until it is transferred to the evidence tech, whose work space is on the second floor. If evidence is unsafe to carry upstairs, it must be transported through the only elevator in the building, which is located in unsecured, public space.
11. The evidence tech's work space adjoins a small room where evidence is stored. As a result the evidence tech is often breathing fumes from dirty materials, drugs and/or paraphernalia, etc.



OAKDALE PUBLIC WORKS



SUMMARY

The public works facility has occupied its current space since 1985 with additions in 1993, 2001, and 2009. During that time the department has grown significantly both in staff and equipment.

REGIONAL SIGNIFICANCE

The City of Oakdale is home to 29 community parks; several of which have a regional draw. These include the Oakdale Nature Preserve, the Oakdale Bark Park, and Richard Walton Park and skatepark. In 2018 the city issued 222 permits for picnic shelter rentals.

A variety of large scale events are held in Richard Walton Park that draw an attendance in the 1,000's from across the 7-county metro area. These include Oakdale Summerfest, VetsFest, summer concert series, Family Fun Flatables and more. The Oakdale Discovery Center, located at the Oakdale Nature Preserve, attracts more than 5,000 annual daily visitors from all over the east metro. In 2018 the city issued 60 permits for Discovery Center facility rental for events including family parties, meetings, weddings, and memorial ceremonies.

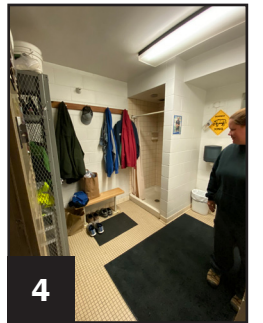
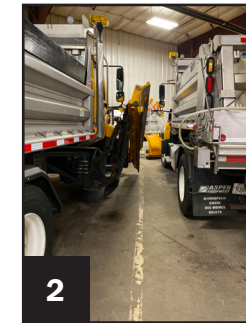
In addition to maintaining city parks and facilities, the Oakdale Public Works department is also responsible for maintaining more than 90 miles of streets. Oakdale is in the unique position that is situated between several main thoroughfares including highways I-94, I-694, 36, and 120. Because of this, many motorists traveling through the city are from surrounding communities.

The City also supplies water to Landfall, and has an emergency water connection with Woodbury.



SPACE - SITE - ENVIRONMENTAL

1. Trailers, plows, generators, dumpsters, streetlights, and other equipment is stored outside as there is not enough space inside. Constant exposure to the elements greatly shortens the useful life of equipment. Additionally, equipment is stored at other city facilities because the current site cannot hold everything in a way that safe and efficient.
2. Building is too small to effectively accommodate vehicles and modern equipment. Equipment is congested and there is no room to expand the building.
3. Lunch room doubles as training space, which hardly accommodates full-time staff. The room far exceeds capacity in summer months with seasonal staff.
4. The men's locker room is on the second floor (no elevator), which is not ADA compliant. Staff barely fits into existing space. The women's locker room has only enough space for four lockers; no gender equity.
5. There is no treatment of runoff from open dumpsters, vehicle washing, and fuel island canopy.
6. Personal vehicles are parked in operational areas due to lack of adequate employee parking space.



SAFETY

7. Mold is present on the exterior of the building due to moisture and drainage issues.
8. Exhaust fumes, caused by diesel particulate matter and carbon monoxide, exist in the building from the indoor mechanics' bay and indoor vehicle storage.
9. Due to lack of main floor storage, vehicle parts are stored on the second floor. As there is no elevator access, mechanics have to carry parts, which are often bulky and heavy, up and down stairs, causing safety concerns.
10. The computer systems that run SCADA are replaced at a higher rate than the rest of the city – causing both an increased cost to the city and potential for failure in a situation where we are connected to another city's water supply.



BUILDING CONDITION

11. Roofing is nearing age for replacement
12. Wall blocks are crumbling at the ground level where paving or sidewalks are adjacent to the building.
13. Heating and ventilation systems have reached their useful life, causing air quality and health concerns. The vents that do run are constantly cleaned and full of debris within a matter of days. Items have been removed from the walls and black outlines of the frames remain.

