

MINNESOTA'S



COVID-19 RECOVERY BUDGET

2022-2023 BUDGET RECOMMENDATIONS



Budget Presentation - March 26, 2021

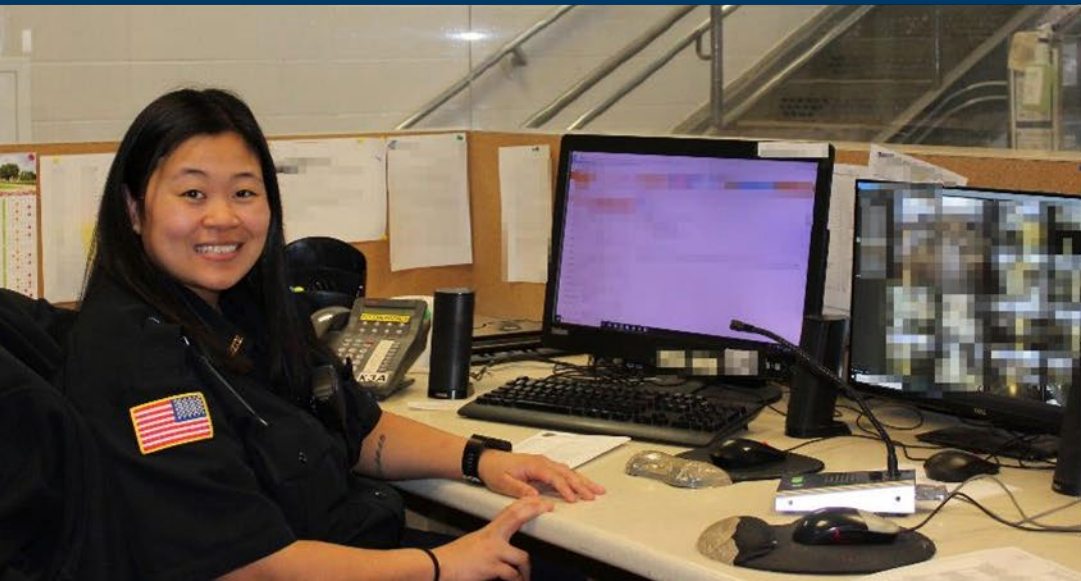
Paul Schnell, Commissioner of Corrections

Chris Dodge, Chief Financial Officer

Transforming Lives for a Safer Minnesota | mn.gov/doc

Our Mission

Transforming lives for a safer Minnesota



DOC - By The Numbers

- More than 4,200 employees
 - 10 prisons
 - 17 statewide district field supervision offices
 - About 20,000 individuals on DOC community supervision
 - Agency budget \$632M FY21
- Typical Pre-COVID: +/- 9200 prison population
 - Over 95% of incarcerated persons will return to their communities upon release from prison
 - 8,857 - March 2020 Population
 - 7,325 - January 1, 2021 Population
 - During the typical month, the DOC releases +/-600 people from its prisons

Overview of the DOC – State Correctional Facilities



MCF-Shakopee
est. 1986
capacity: 656



MCF-Faribault
est. 1989
capacity: 2026



MCF-Lino Lakes
est. 1963
capacity: 1325



MCF-Red Wing
est. 1889
capacity: 42-A, 111-J



MCF-Rush City
est. 2000
capacity: 1018



MCF-Oak Park Heights
est. 1982
capacity: 444



MCF-St. Cloud
est. 1889
capacity: 1058



MCF-Stillwater
est. 1914
capacity: 1626



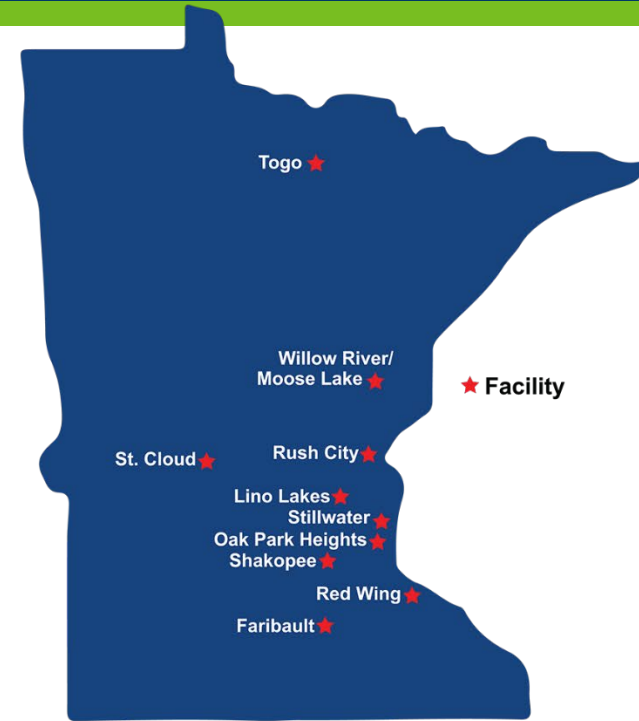
MCF-Togo
est. 1955
capacity: 75



MCF-Moose Lake
est. 1938
capacity: 1057



MCF-Willow River
est. 1992
capacity: 177



Overview of the DOC

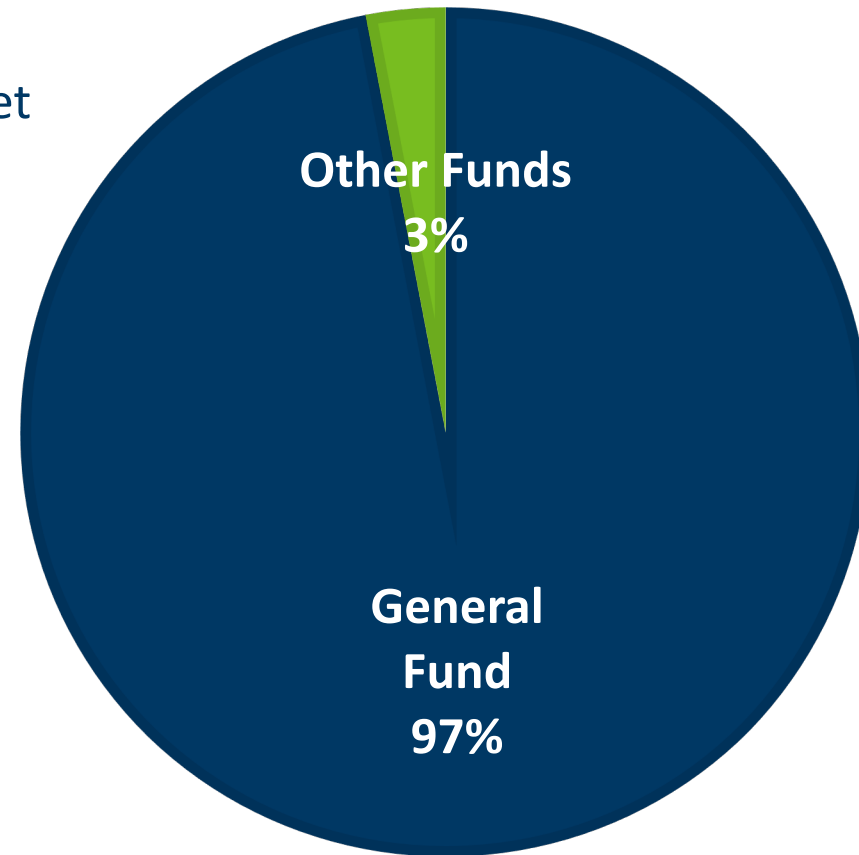
The roles and obligations of the agency:

- **Provide healthcare to those incarcerated, including substance use disorder, sexual offender treatment, mental health, and other rehabilitative programs**
- **Provide transition planning and other reentry services**
- **Provide education to those incarcerated**
- **Inspect and license county jails and juvenile detention facilities**
- **Approve Community Correction Act (CCA) County comprehensive plans and oversee the pass-through funding to CCA and county probation office counties**
- **Provide correctional supervision services in a variety of Minnesota counties**

Overview – FY2021 General Fund

Total DOC General Fund Budget \$632.104M

- Represents 2.5% of the State's total General Fund budget
- 97% General Fund



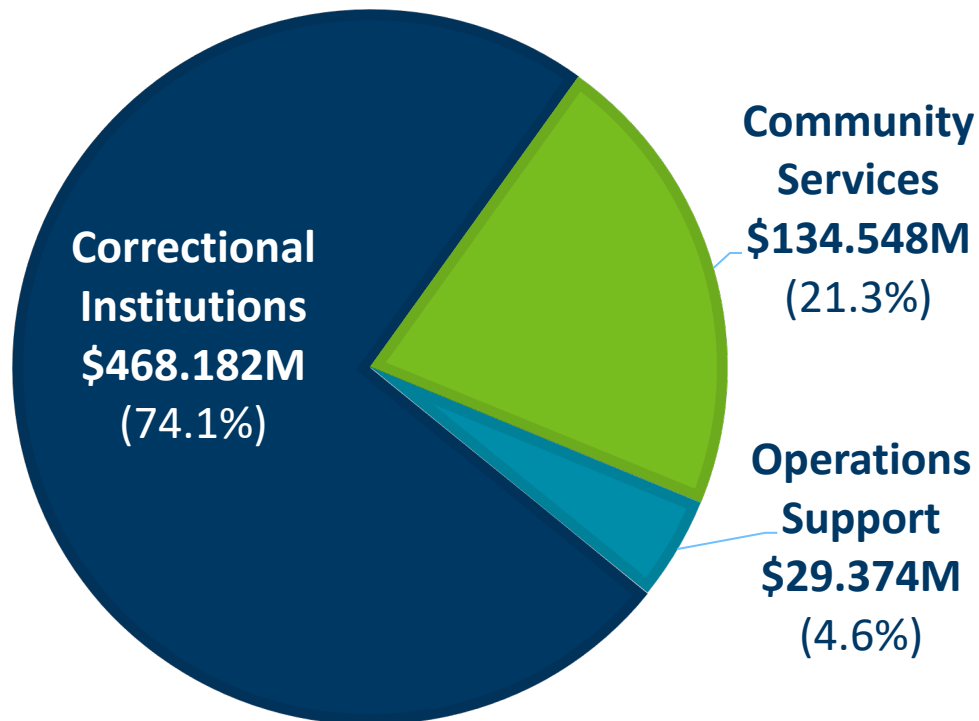
FY2021 General Fund

Total DOC General Fund Budget \$632.104M

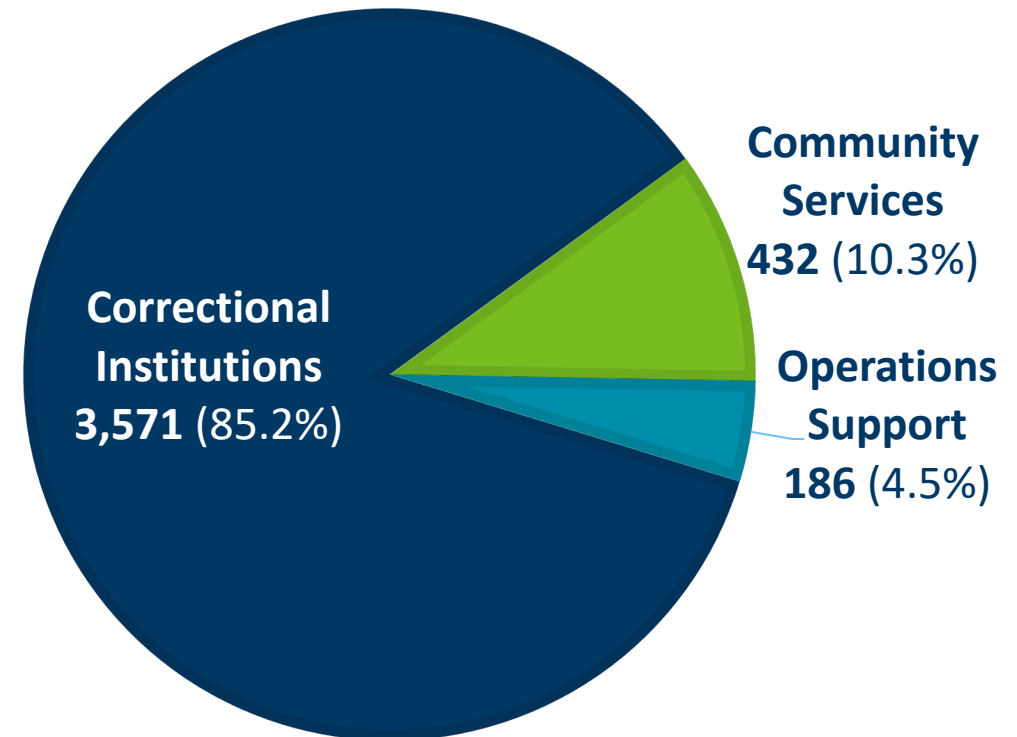
- Represents 2.5% of the State's total General Fund budget
- 97% General Fund

General Fund FTEs: 4,189

DIVISIONS

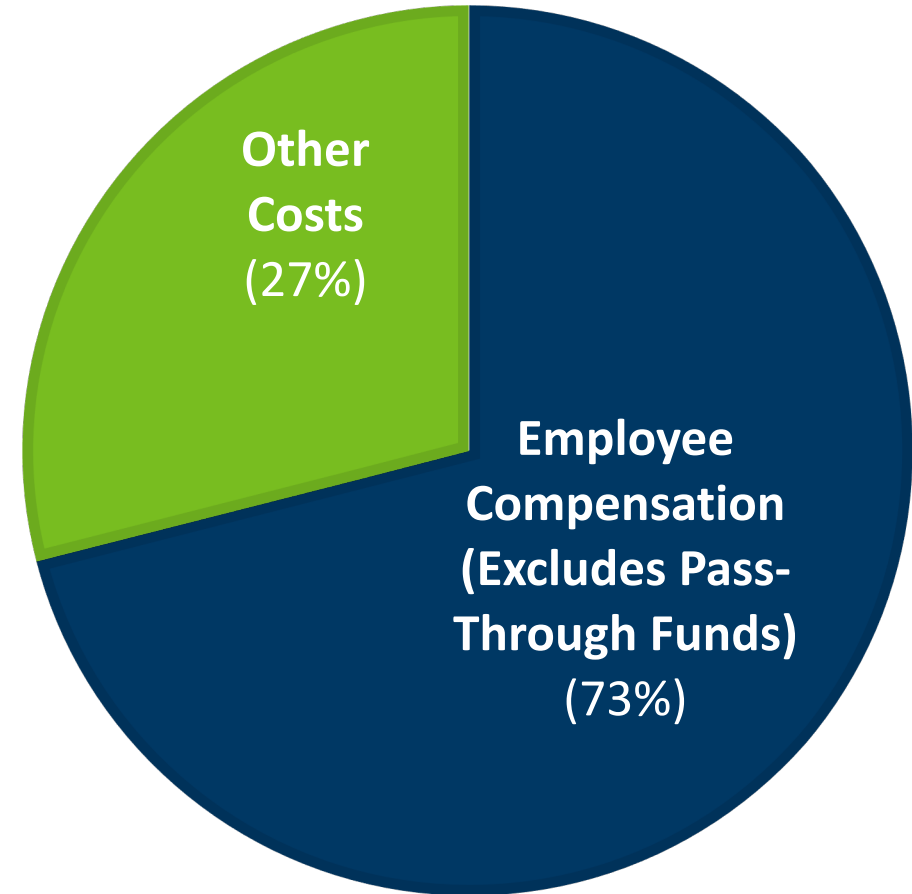
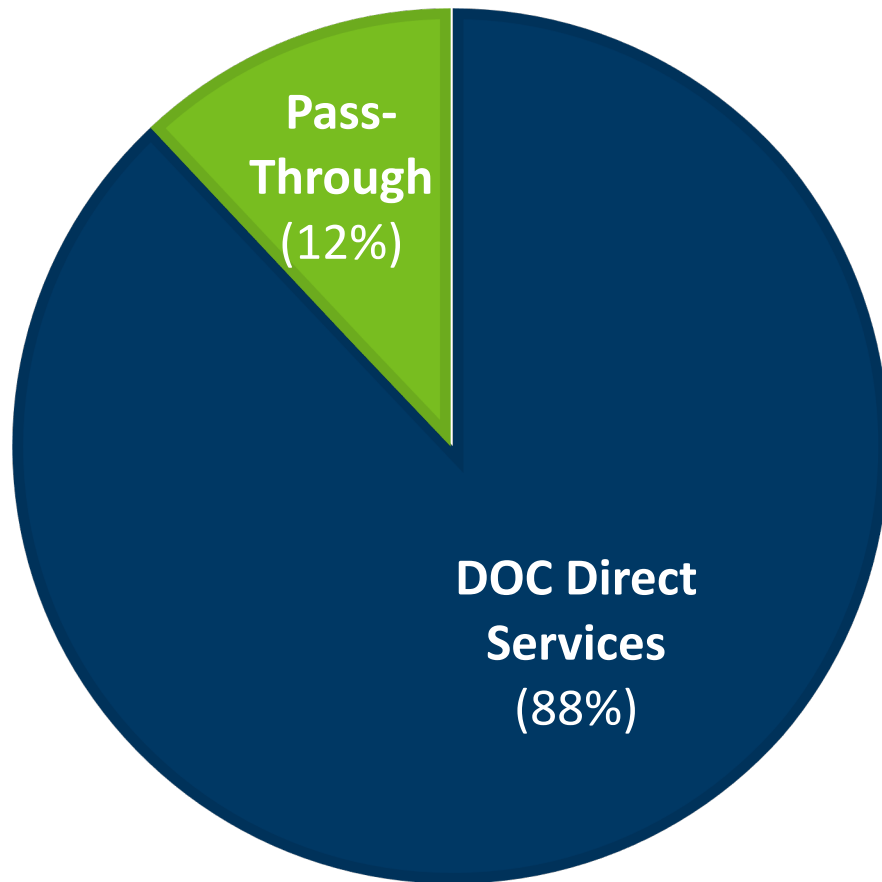


FTEs



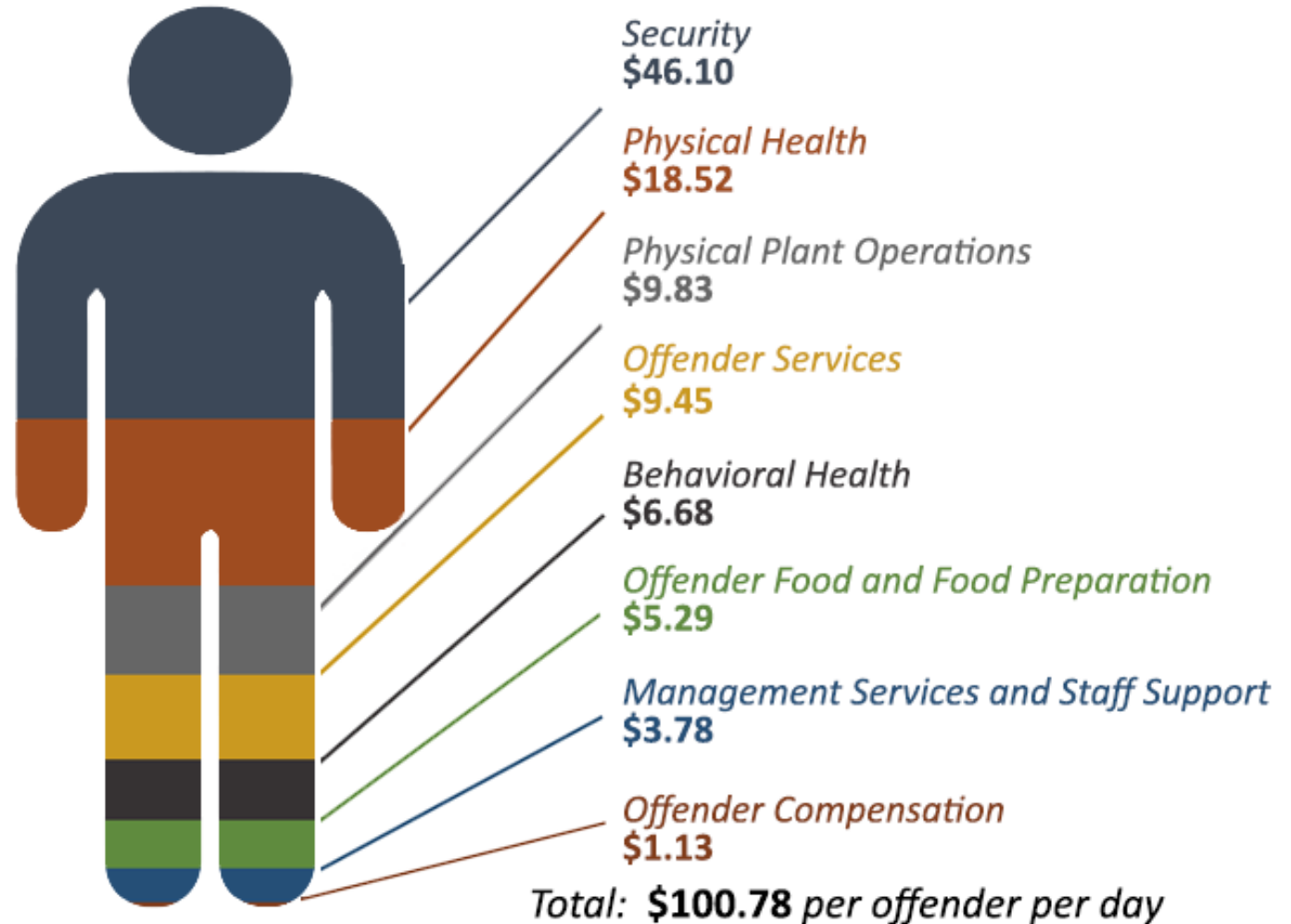
EFFICIENT, EFFECTIVE, ACCOUNTABLE

SERVICES



DAILY COST PER OFFENDER

Average adult operational per diem for FY 2018



FY2022-2023 Governor's Revised Budget Recommendations

1.	OPERATING ADJUSTMENT	\$23.335M
2.	INFORMATION TECHNOLOGY	\$3.187M
3.	JUVENILE JUSTICE DATA REPOSITORY	\$2.32M
4.	ENHANCING SAFETY IN FACILITIES	\$1.484M
5.	HEALTHY START ACT	\$400,000

2022-2023 Governor's Revised Budget Recommendations

6.	INDETERMINATE SENTENCE RELEASE BOARD	\$80,000
7.	OFFICE OF OMBUDS FOR CORRECTIONS	(\$1.322M)
8.	OPERATING REDUCTION	(\$4.3M)
9.	PRISON POPULATION REDUCTION	(\$16.794M)
10.	MINNESOTA REHABILITATION & REINVESTMENT ACT	\$0

2022-2023 Governor's Revised Budget Recommendations

11. ONE-TIME INCREASE FOR COUNTY GRANTS, REPORT \$2.642M

12. PROBATION SERVICES \$2.340M



Operating Adjustment

MINNESOTA'S

m

COVID-19 RECOVERY BUDGET

One Minnesota | mn.gov/doc

OPERATING ADJUSTMENT

FY22	FY23
\$7.769M	\$15.566M

- DOC is the third largest state agency and our budget is 97% reliant on the general fund.
- Our operating adjustment request will allow us to maintain our current operations.
- Without funding, the DOC may need to eliminate up to 84 existing FTEs in FY 2022 and up to 169 FTEs by FY2023.



Information Technology

MINNESOTA'S



COVID-19 RECOVERY BUDGET

One Minnesota | mn.gov/doc

INFORMATION TECHNOLOGY

FY22	FY23
\$1.566M	\$1.621M

- This request is to maintain the current level of information technology (IT) services provided through MN.IT.
- The MN.IT@DOC IT unit is responsible for application development and support of over **150 applications** used by DOC staff, county corrections agencies, local law enforcement and other criminal justice entities.
- The unit supports more than **5,000 workstations** and **400 servers** for employees who work on-site and employees who telework.



Juvenile Justice Data Repository

MINNESOTA'S



COVID-19 RECOVERY BUDGET

One Minnesota | mn.gov/doc

JUVENILE JUSTICE DATA REPOSITORY

FY22	FY23
\$1.66M	\$0.66M

- Request is to modernize the current juvenile management system and develop a comprehensive juvenile justice data repository to include expanded data transactions, management, analysis, and reporting to the legislature and the public.
- Supports the work of the re-established Juvenile Justice Reform Unit at the DOC.
- Focus is on data housed in various state and local systems, such as arrests, foster care placements, truancy rates, etc.



Enhancing Safety In State and Local Correctional Facilities

ENHANCING SAFETY IN STATE AND LOCAL CORRECTIONAL FACILITIES

FY22	FY23
\$992,000	\$492,000

- Request is to improve and expand the oversight of state and local correctional facilities.
- Responds to findings of two OLA reports and DOC's internal audit.
- DOC's licensing authority in statute has lacked specificity and procedural clarity and has not been substantively revised for **45 years**.



Photo credit: Pioneer Press

Healthy Start Act

HEALTHY START ACT

FY22	FY23
\$200,000	\$200,000

- Request is to create a release program for pregnant women and new mothers who are committed to the Commissioner.
- Eligible women may be alternatively placed in halfway house type settings during their pregnancy and for a short amount of time post-partum; and they would receive appropriate treatment and programming related to parenting and other assessed needs.

Healthy Start Act – In Numbers

- **77% of pregnant women sent to prison between 2003 and 2020 were revoked on technical violations of probation/supervised release.**
- **76% had governing offenses that were non-violent.**
- **4.5 months – median length of stay in prison for pregnant women.**
- **41% of those who gave birth while incarcerated reached their release dates within 90 days of giving birth; 54% within 6 months, 67% within 9 months, and 76% within 1 year.**



Indeterminate Sentence Release Board

MINNESOTA'S



COVID-19 RECOVERY BUDGET

One Minnesota | mn.gov/doc

INDETERMINATE SENTENCE RELEASE BOARD

FY22	FY23
\$40,000	\$40,000

- Request is to establish an Indeterminate Sentence Release Board (ISRB) to review eligible **life with the possibility of parole** cases.
- Those release decisions would be made by five members of the ISRB, whereby they are currently made solely by the commissioner of corrections.
- The ISRB proposal simply expands who conducts reviews and makes release decisions, not who should be eligible for a review and possible release.
- Minnesota is only one of four states where these decisions are made by one person, rather than a panel of experts.



Office of Ombuds for Corrections

OFFICE OF OMBUDS FOR CORRECTIONS

FY22	FY23
(\$659,000)	(\$663,000)

- Request is to separate the Ombudsperson for Corrections from the Department of Corrections.
- This will help to ensure the Ombudsperson for Corrections is a unique and independent agency.



Operating Reduction

OPERATING REDUCTION

FY22	FY23
(\$2.15M)	(\$2.15M)

- The reductions will be accomplished with three strategies:
 1. The renegotiation of the health care contract for incarcerated people due to lower prison population;
 2. Reducing the amount of leased space used by the DOC due to significant increases in teleworking and teleconferencing, as well as relocation of some staff to DOC-owned facilities; and
 3. Organizational restructuring that will flatten the current organizational structure and create service clusters that are person-centered.



Prison Population Reduction

MINNESOTA'S

m

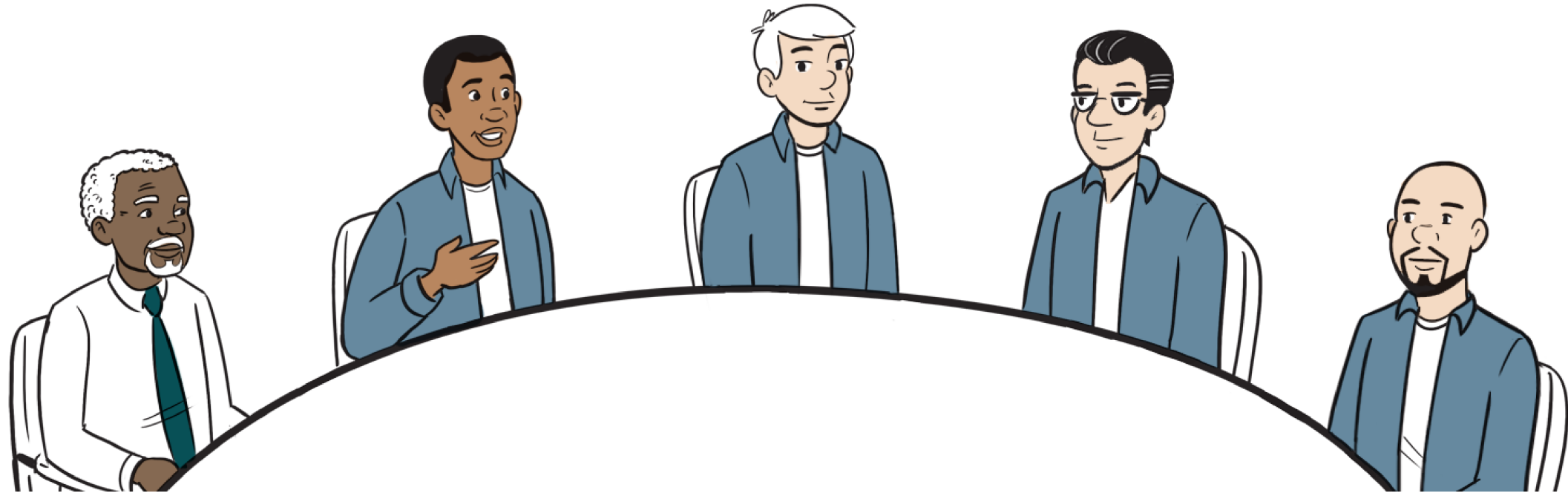
COVID-19 RECOVERY BUDGET

One Minnesota | mn.gov/doc

PRISON POPULATION REDUCTION

FY22	FY23
(\$9.001M)	(\$7.793M)

- The recommendation reduces base operating budgets used for expenses directly attributable to the incarceration of individuals in state correctional facilities; food, clothing, linens, and other direct facility costs. Jail bed rentals will be saved.
- Continued and responsible management of the pandemic crisis in correctional facilities significantly limits the extent of potential staffing, operating and organizational reductions due to social distancing strategies and other recommended protocols.



Minnesota Rehabilitation & Reinvestment Act

MINNESOTA REHABILITATION AND REINVESTMENT ACT

FY22	FY23
\$0	\$0

- The recommendation expects the commissioner of corrections to develop individualized rehabilitation plans for incarcerated people that, if objectives are met, will result in earned incentivized release from confinement.
- Savings from earned incentivized release will be reinvested equally across four areas: victim support services; strategic investments in crime prevention and intervention initiatives; reinvestment in community-based correctional programs; and the state general fund.



One-Time Increase for County Grants

MINNESOTA'S

m

COVID-19 RECOVERY BUDGET

One Minnesota | mn.gov/doc

ONE-TIME INCREASE FOR COUNTY GRANTS

FY22	FY23
\$1.321M	\$1.321M

- Request is to provide a 2% increase to pass-through funding for the Community Corrections Act (CCA) and County Probation Officer (CPO) reimbursement programs to help maintain effective community supervision services.
- This is one-time funding for the FY2022 -2023 biennium also requires submission of a collaboratively developed report with recommendations to the 2022 Legislature related to defined system-wide services and an equitable funding structure.



DOC Probation Services

DOC PROBATION SERVICES

FY22	FY23
\$1.170M	\$1.170M

- Request is for DOC-provided probation supervision services as required and administered by Minnesota Statute 244.19:
 - Meeker County transitioned to DOC-provided services on December 1, 2019; and
 - Mille Lacs County will transition to DOC-provided services on July 1, 2021; and
 - One agent was added for Renville County on July 1, 2020.
- Counties reimburse the DOC for actual costs. Reimbursements are deposited to the state’s general fund, resulting in a “no-cost” proposal.
- Lack of funding is a cut to DOC’s probation and supervised release budget.

Questions?