

Empowering Minnesota Small Communities Supporting Sustainable and Resilient Infrastructure State of Minnesota and University Partnerships

Sustainable Infrastructure Policy Committee

February 8, 2023

Regional Sustainable
Development Partnerships

UNIVERSITY OF MINNESOTA
EXTENSION



HUMPHREY SCHOOL
OF PUBLIC AFFAIRS
UNIVERSITY OF MINNESOTA

MINNESOTA DESIGN CENTER



Goals of Community/UMN/State Partnership

- Level the playing field for small communities by developing community-shaped infrastructure project proposals that can be competitive for discretionary funding and create higher ROI for state and local dollars.
- Inform robust policy, planning, and funding prioritization processes to support building sustainable and resilient projects and infrastructure systems across the state.

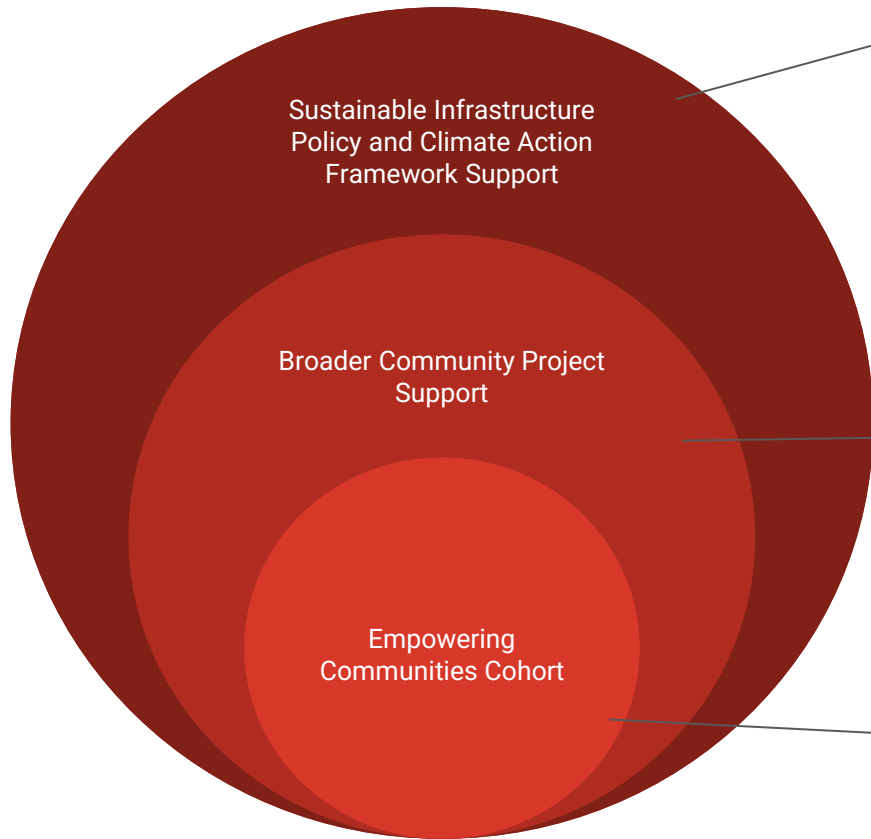


Program Tenets

Practicable work that serves community needs and challenges to create opportunities by:

- Being community-driven;
- Building upon existing community assets;
- Bringing additional capacity to small communities for project identification and development;
- Identifying and leveraging existing regional, state, and federal funding resources;
- Deploying nationally-recognized faculty and researchers in energy, infrastructure, transportation, environmental impact, and housing policy to support communities;
- Developing scenarios that deliver more community impact and value across multiple areas for program investments; and
- Supporting small communities through conception to execution.





Support the sustainable and resilient infrastructure in Minnesota by developing benchmarks and best practices for incorporating sustainability into infrastructure policy and planning.

UMN experts available to support non-cohort communities on key projects.

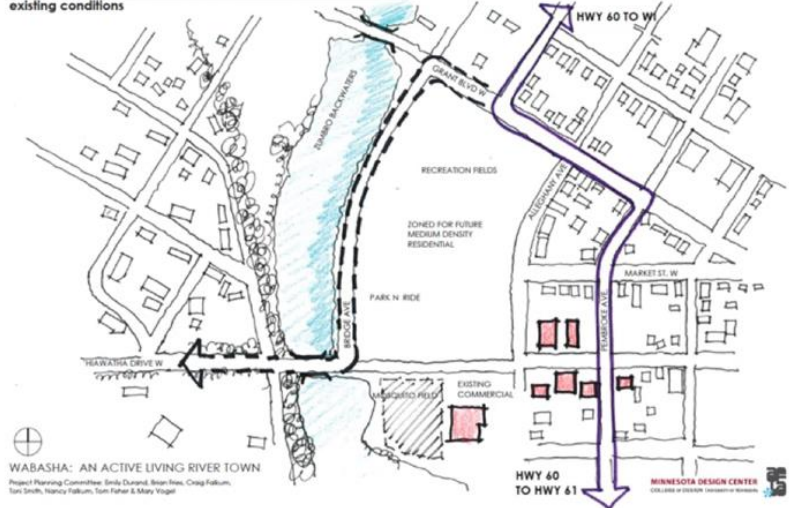
Intensive UMN-Community collaboration. A cohort of communities works with MDC and RSDP to develop broad-based project ideas to address communities needs.

Minnesota Design Center

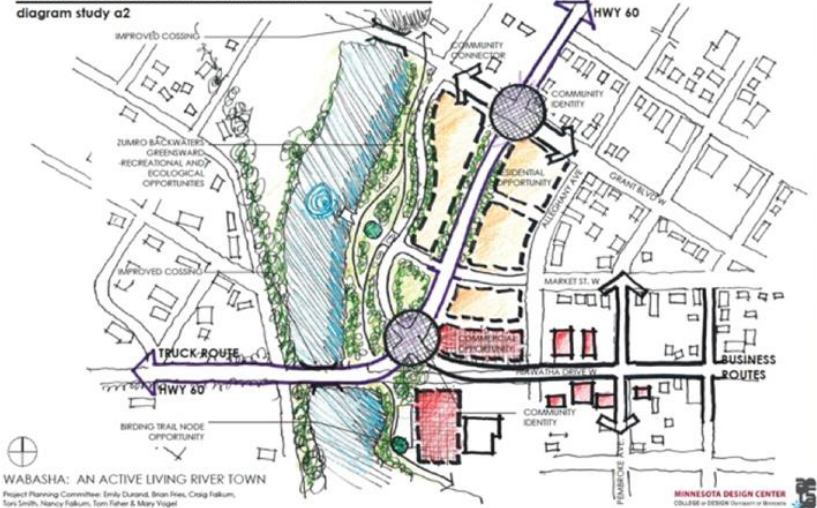
Wabasha Project Example



ZUMBRO SLOUGH/HIGHWAY 60 REALIGNMENT
 existing conditions

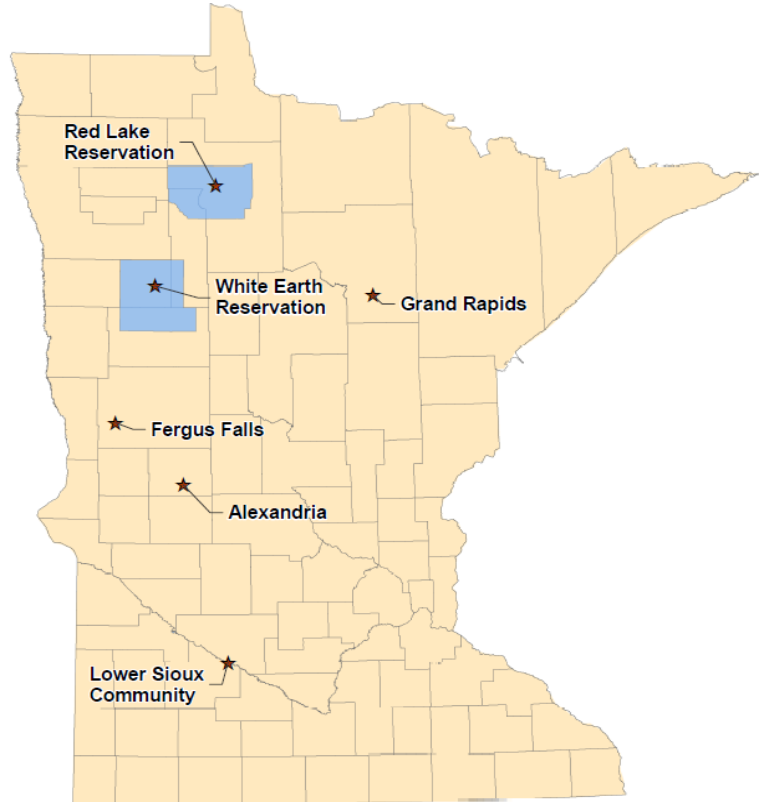


ZUMBRO SLOUGH/HIGHWAY 60 REALIGNMENT
 diagram study a2



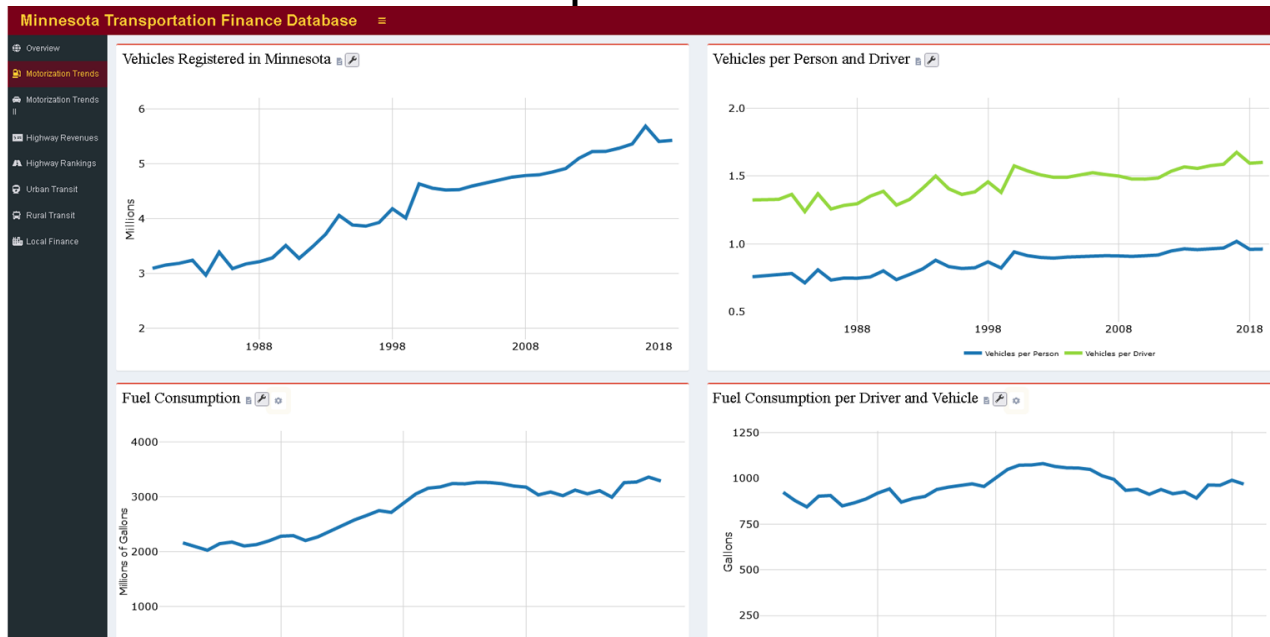
Humphrey School of Public Affairs

- Nationally-recognized faculty and researchers in energy, infrastructure, transportation, environmental impact, and housing policy
- Engaged research with small Minnesota communities and tribal communities



Humphrey School of Public Affairs

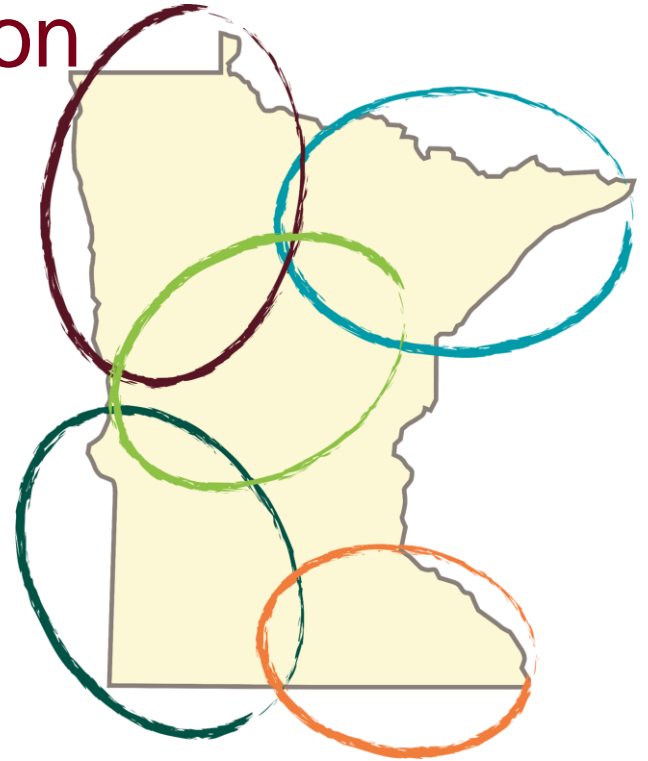
- Experience in developing and implementing policy
 - IURIF/TPEC Transportation Finance Database



Regional Sustainable Development Partnerships, UMN Extension

Numerous projects with small communities across a range of topics.

- A New Downtown for Thief River Falls
- Lower Sioux Community Residential Heating
- Red Lake River Corridor



Center for Transportation Studies

- UMN System-wide, interdisciplinary unit.
- Large scale administrative experience, including national transportation center and support of statewide programs.
- Coordinated large-scale RFPs and funding across University programs.



Potential Funding

Program would be **\$2.5 to \$3 million/year** depending on final scope.

Empowering Communities Cohort, \$1 million/year.

- Minnesota Design Center and Regional Sustainable Development Partnership work with 15-20 communities.

Broader UMN Project Support, \$1 million/year.

- Additional support for small communities from “deep bench” of UMN system SME’s.

Sustainable Infrastructure Policy and Practice Development, \$200k-500k/year.

- Development of sustainable infrastructure policies and project frameworks. Could expand to include work to document infrastructure assets and lifecycles.

Administration and Support, \$300k-500k/year.

- Program and project management, communications, and potential grant writing capacity at UMN dedicated to supporting communities.



Structure

- To be developed in partnership with Legislature.
- Could be standalone program or part of a larger effort for technical assistance and infrastructure planning.
- UMN will develop internal process to ensure streamlined administration and effective identification of pertinent SME's.



Contacts

Dr. Kyle Shelton, Director, Center for Transportation Studies,
shelt169@umn.edu

Professor Tom Fisher, Professor and Director, Minnesota Design Center,
University of Minnesota, tfisher@umn.edu

Ms. Mary Vogel, Senior Fellow, Minnesota Design Center. Former Director
Center for Changing Landscapes, University of Minnesota,
vogel001@umn.edu

Mr. Frank Douma, Director of State and Local Policy & Outreach, Institute for
Urban and Regional Infrastructure Finance, University of Minnesota
Humphrey School of Public Affairs, douma002@umn.edu

Ms. Linda Kingery, Interim Statewide Director, Regional Sustainable
Development Partnerships, kinge002@umn.edu



Questions/Discussion

