

BUILDING COMMUNITY RESILIENCE IN MINNESOTA

ACEs are an American health problem.

Adverse Childhood Experiences (ACEs)

% children with 2+ ACEs:

21.7%

Nationally

16.8%

Minnesota

Adverse Community Environments (ACEs)

include:

- ✓ Poor housing quality & affordability
- ✓ Violence
- ✓ Discrimination
- ✓ Lack of opportunity & economic mobility

Together, these are the "**Pair of ACEs**".
How do they show up?

% children 0-17 who...



...have experienced **economic hardship**

21% 21%



...witnessed **domestic violence**

6% 5%

Adverse Childhood Experiences



...whose guardian **abuses substances**

9% 9%



...lived with an adult with **mental illness**

8% 8%



...had a **parent in jail**

8% 7%

Adverse Community Environments

Nationally

Minnesota



Rate of **violent crimes** (per 100,000 ppl)

386
crimes

236
crimes



% children living in **poverty**

18%

12%



% **severely unaffordable or unsafe homes**
(monthly costs over 50% of income, no kitchen,
no plumbing, or over-crowding)

18%

14%



% families with **limited access to a grocery store**

19%

24%



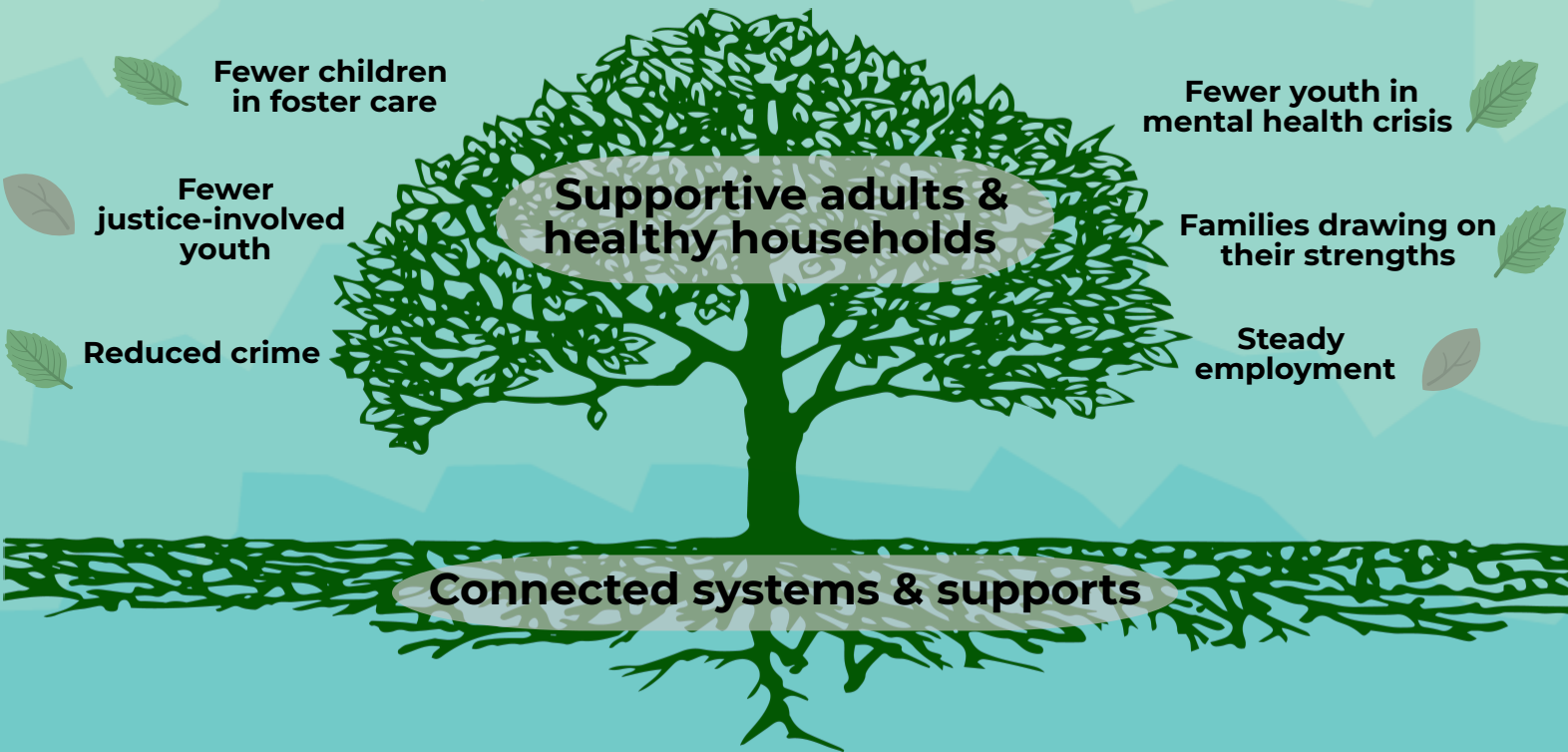
Rate of **drug overdose** deaths (per 100,000 ppl)

22

12

BUILDING COMMUNITY RESILIENCE IN MINNESOTA

BCR is working to transform program, practice, and policy across systems to improve the health and life outcomes of children, families, and communities.



We can build community resilience by:



Ensuring all children have a medical home

Nationally

49%

% of children have a medical home

Minnesota

54%



Guaranteeing access to good, nutritious food

32%

% of families do not have consistent access to healthy food

28%



Providing school-based healthcare centers with mental health services

2,584

of these centers in our community

15



Promoting working class job growth

1.5%

% job growth over 2017-2018

0.7%



Ensuring access to jobs

62%

% of workers have <30 minute commute

69%



Providing access to affordable housing

68%

% of families spend <30% of income on housing costs

73%

go.gwu.edu/BCR



@ResilNation



go.gwu.edu/BCRvideos



"Pair of ACEs" group

Go to go.gwu.edu/bcrsnapcite for data source information.