

BOND REQUEST: INVESTING TODAY, HARVESTING TOMORROW

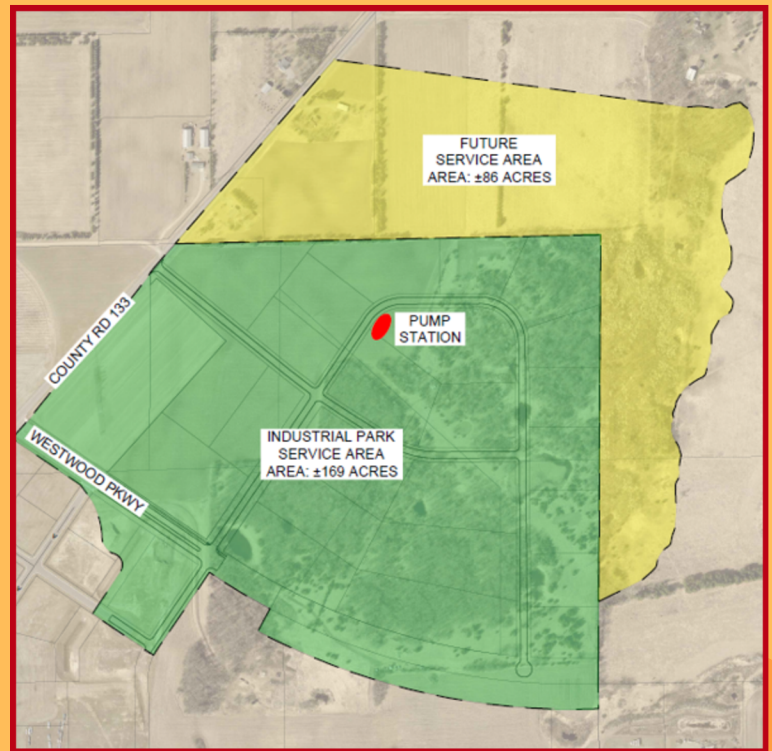
A \$2.25 million request for State Funding to build Phase Two of Northland Business Center Industrial Park.

- A \$2.25 million bonding request, matched by a \$2.25 million city/developer contribution, represents a shared commitment to long-term economic growth.
- **Proven Return on Investment:** In less than five years Phase 1 went from an undeveloped greenfield of 74 acres into 200+ full-time jobs, over 500,000 square feet of new building space and over \$41 million in total building valuation (to-date).
- **Significant Growth Potential:** Phase 2 has the capacity to double both job creation and building square footage of 1st phase, multiplying the economic impact.
- **Regional Impact:** Project strengthens the region by attracting employers, expanding the workforce, and generating ripple effects that benefit surrounding communities through high paying jobs.

The City of St. Joseph Northland Business Center Industrial Park will help to increase economic development, increase tax base and meet the demands of workforce needs as part of the region.

Created for the City of St. Joseph, MN, by Flaherty & Hood, P.A. 2/17/26.

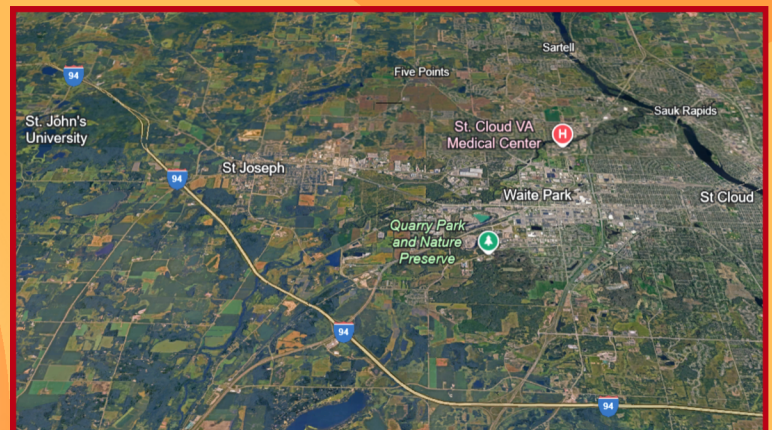
CONTACT US



Detailed site map.



Future planned site.



Project location in region.

Adam Scepianiak

Mayor

(320) 333-9122

ascepianiak@cityofstjoseph.com

David Murphy

City Administrator

(320) 229-9424

dmurphy@cityofstjoseph.com

TIMELINE: GROWTH OF PHASE 1

