



The **Mission** of the Red River Watershed Management Board (RRWMB) is to institute, coordinate, and finance projects and programs to alleviate flooding and assure the beneficial use of water in the watershed of the Red River of the North and its tributaries.

Contact Information:

Robert L. Sip
Executive Director
Rob.sip@rrwmb.org
218-474-1084 (Cell)

Lisa Frenette
Legislative Liaison
frenettela@gmail.com
651-785-5202 (Cell)

Nikki Swenson
Executive Assistant
Nikki.swenson@rrwmb.org
218-784-9500 (Office)
Fax: 218-784-9502

Office Address:

11 Fifth Avenue East Suite B
Ada, MN 56510

Facebook Page:

<https://www.facebook.com/RedRiverWatershedManagementBoard>

Website:

www.rrwmb.org

FEBRUARY 2021

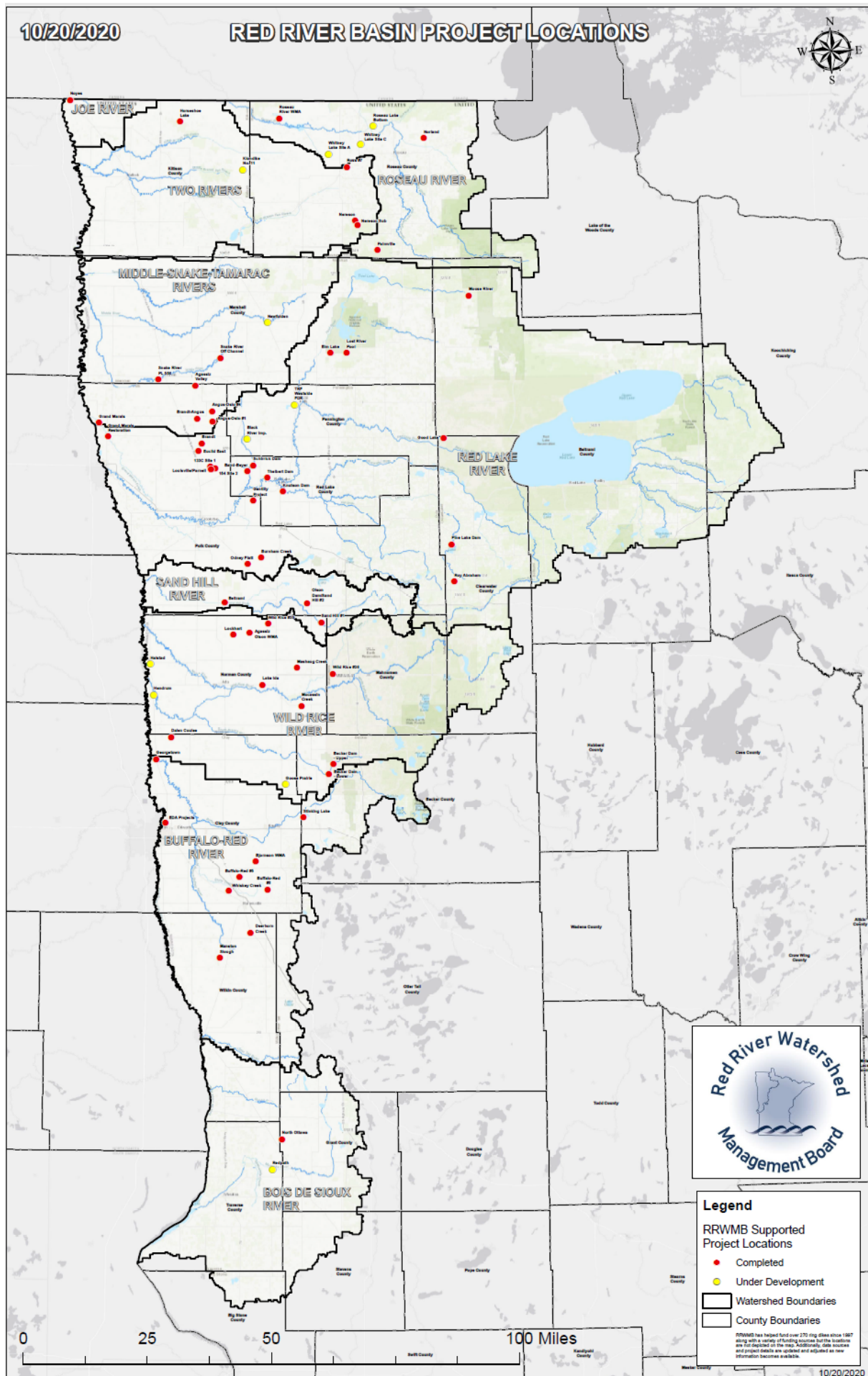
RRWMB CLIMATE ADAPTATION AND RESILIENCY EFFORTS

Background: The RRWMB was created by the Minnesota Legislature in 1976 to address reoccurring flooding in the Red River Basin (RRB) of Minnesota. The RRWMB has taxation authority and uses its financial resources to fund Flood Damage Reduction (FDR) and water quality projects of its member Watershed Districts (WD). Climate change has dramatically affected the RRB over the past 50 years. It is the goal of the RRWMB to address these concerns through the following efforts which have been completed or are ongoing to address climate adaptation and resiliency in the RRB. While this is not an all-inclusive list, the information in this document illustrates progress that has been made since 1976 by the RRWMB and its member WD's.

- **FDR Projects:** Sixty (60) FDR projects have been funded by the RRWMB with eleven more currently in the RRWMB funding process (refer to the map of projects on the backside of this document). Approximately 200,000 acre-feet of storage has been developed in the RRB of Minnesota alone.
- **Water Quality Projects:** Ten (10) water quality projects are in the RRWMB funding process through the RRWMB Water Quality Program that was adopted in March 2020.
- **RRB Flood of 1997:** Prompted more change but it is difficult to plan and adapt for mega storms or events such as 500-year plus events. Projects are engineered and designed according to current standards and requirements. Some examples of change include but is not limited to:
 - **RRB Cities:** Are largely protected but there is still some work to complete. Several city levees have been recently upgraded along with road raises in cooperation with the RRWMB, WD's, and local and state road authorities.
 - **Ring Dikes:** The RRWMB has co-funded approximately 300 farmstead ring-dikes with the RRWMB, WD's, landowners, State of Minnesota, and the federal government (\$11 million has been spent since 1997). Much work is left to reduce agricultural land flooding.
 - **Flood Buyouts:** Have been conducted and proper zoning continues to be an important tool to prevent new construction in designated floodways such as the Red River and larger tributaries.
 - **Public and Private Drainage Systems:** Are regulated, and culvert sizing and other best management practices are invoked to reduce downstream flooding and water quality impacts.
- **1998 RRB Flood Mediation Agreement:** Was enacted and is overseen by the RRB Flood Damage Reduction Work Group. FDR projects may now include habitat and water quality components because of the Agreement.
- **Long-term Flood Solutions (LTFS):** Was developed and there is now a 20 percent flow reduction strategy for the RRB. An LTFS update is underway.
- **Distributed Detention Studies:** Have been developed to illustrate where water storage can take place on the landscape and additional hydrologic modelling is currently underway to further inform decision-making.
- **Implementation:** The RRWMB vision, mission, strategic plan, governing documents, and enabling legislation guides our efforts.

10/20/2020

RED RIVER BASIN PROJECT LOCATIONS



Investing in and Managing the Watershed of the Red River Basin