

WARREN

*Your New Hometown*



**NORTHLAND**  
COMMUNITY & TECHNICAL COLLEGE



**ARNSBERG**

# **A TransAtlantic Partnership**

Using Technology To Save Money

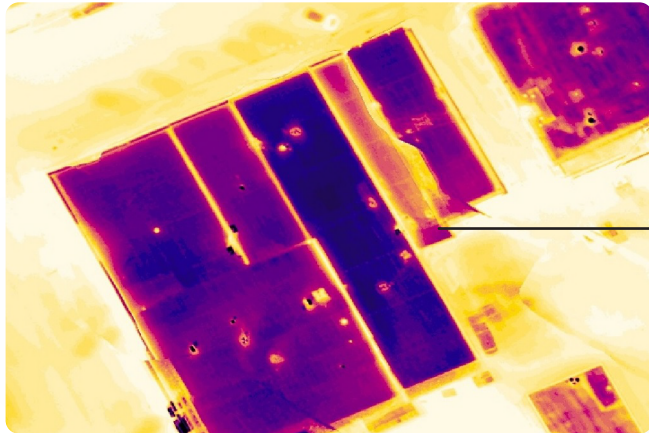
# **City Of Warren**

120 E. Bridge Ave.  
Warren, MN 56762

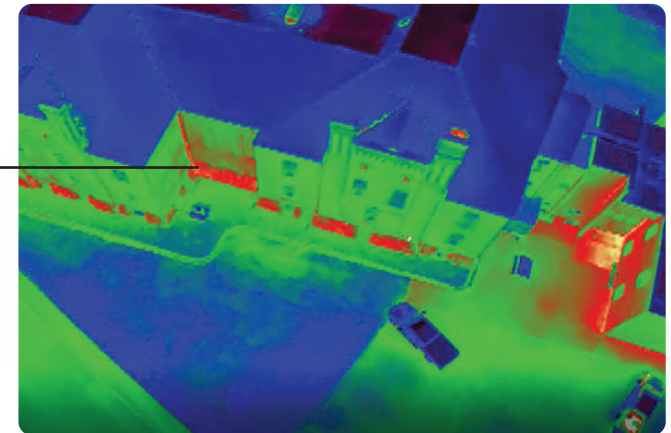
[warrenminnesota.com](http://warrenminnesota.com)  
(218) 745-5343

# USING DRONES TO IDENTIFY ENERGY LOSS

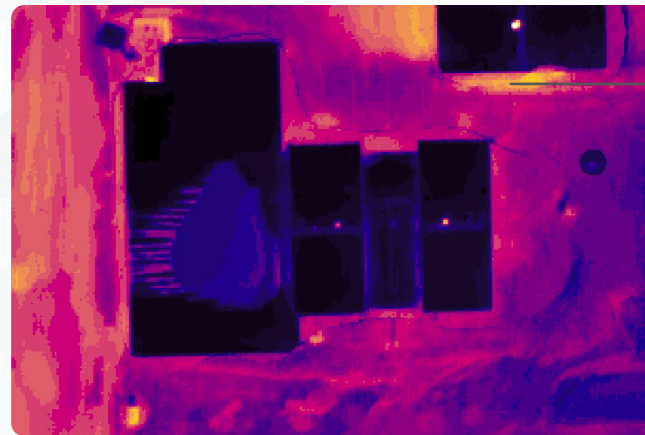
Thermal imaging can help identify the greatest energy loss in your home. You can pinpoint energy efficient projects to provide the greatest savings.



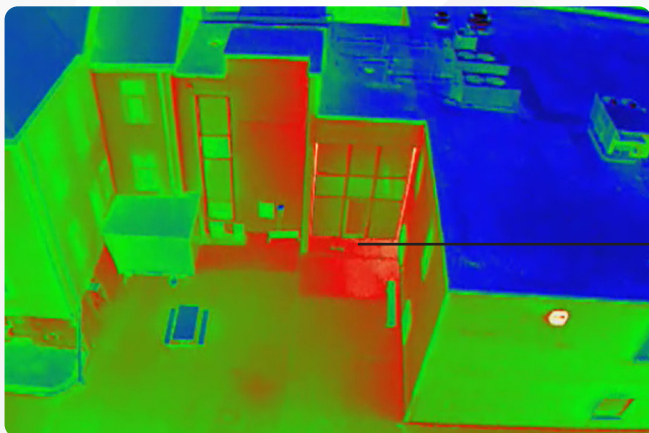
○ There is energy loss showing in the roof, this could possibly be from a lack of insulation.



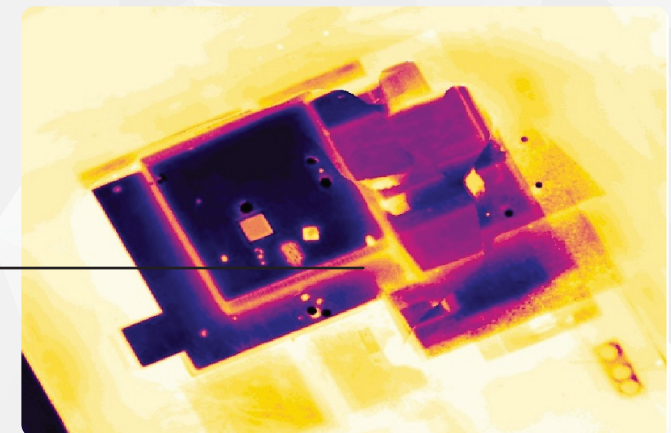
Bright red indicates ○ potential energy loss occurring.



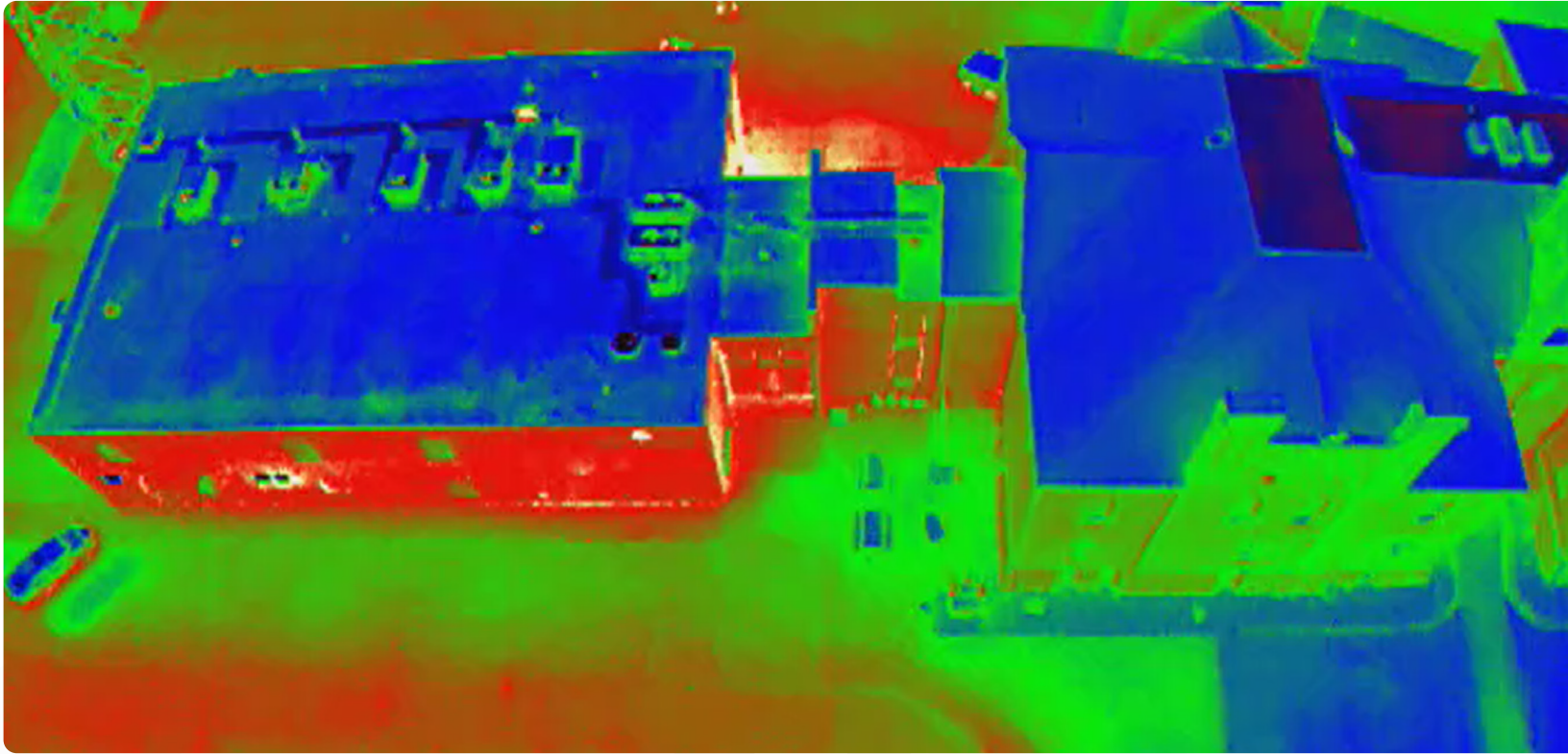
○ The yellow areas could be vents.



○ The banks of the windows are showing excess energy loss.



There is energy loss ○ where the buildings connect.



## Thermal Overview Using Thermal Image Drones

Warren, Minnesota and Arnsberg Germany participate in the Climate Smart Municipalities program. Together, they have been conducting thermal scans using drones. Northland Community and Technical College, from Thief River Falls, Minnesota, has been working with Warren to complete the pilot program. Together we are smarter.

