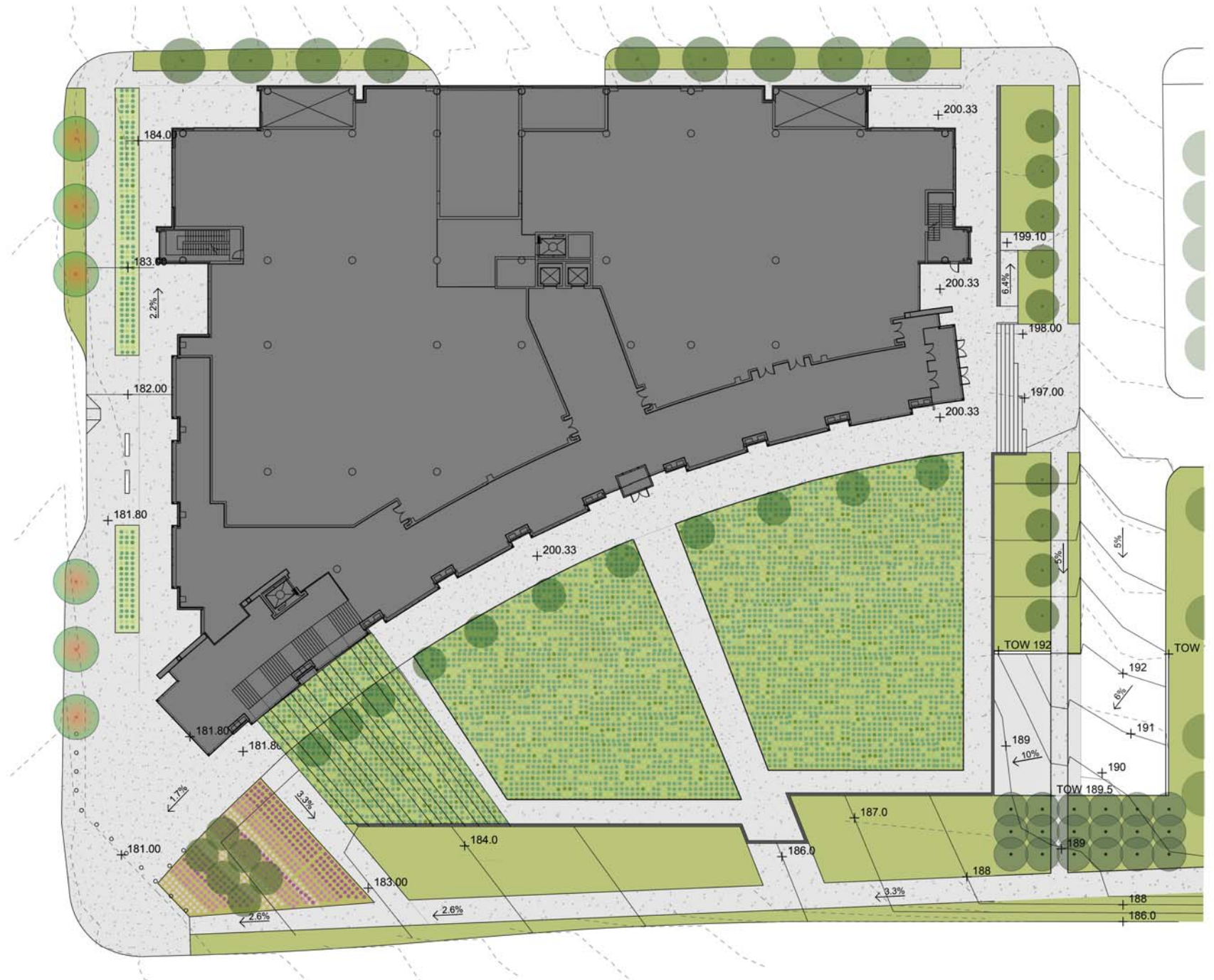


# CAPITOL OFFICE BUILDING

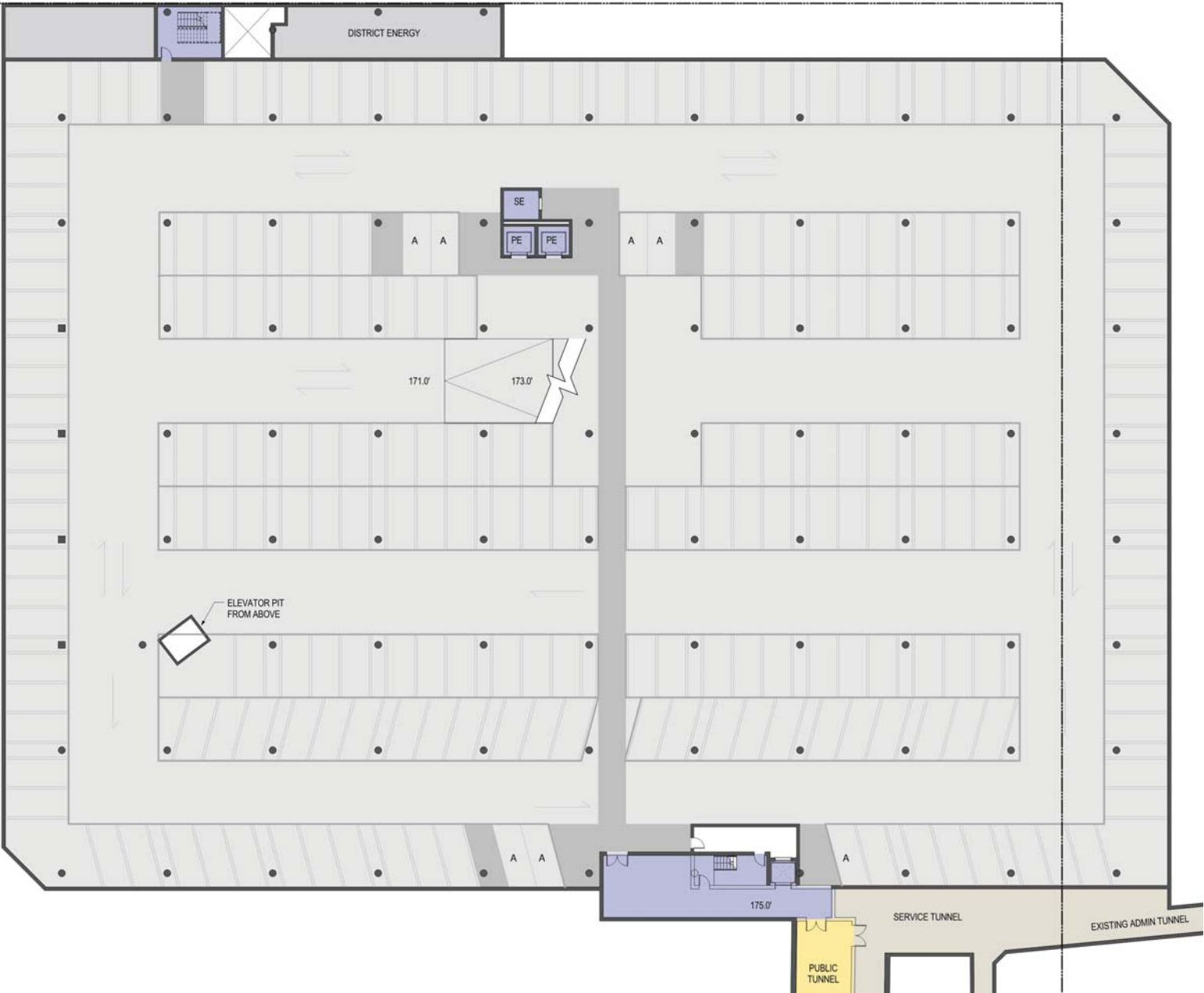
MINNESOTA HOUSE OF REPRESENTATIVES

RULES AND LEGISLATIVE ADMINISTRATION COMMITTEE

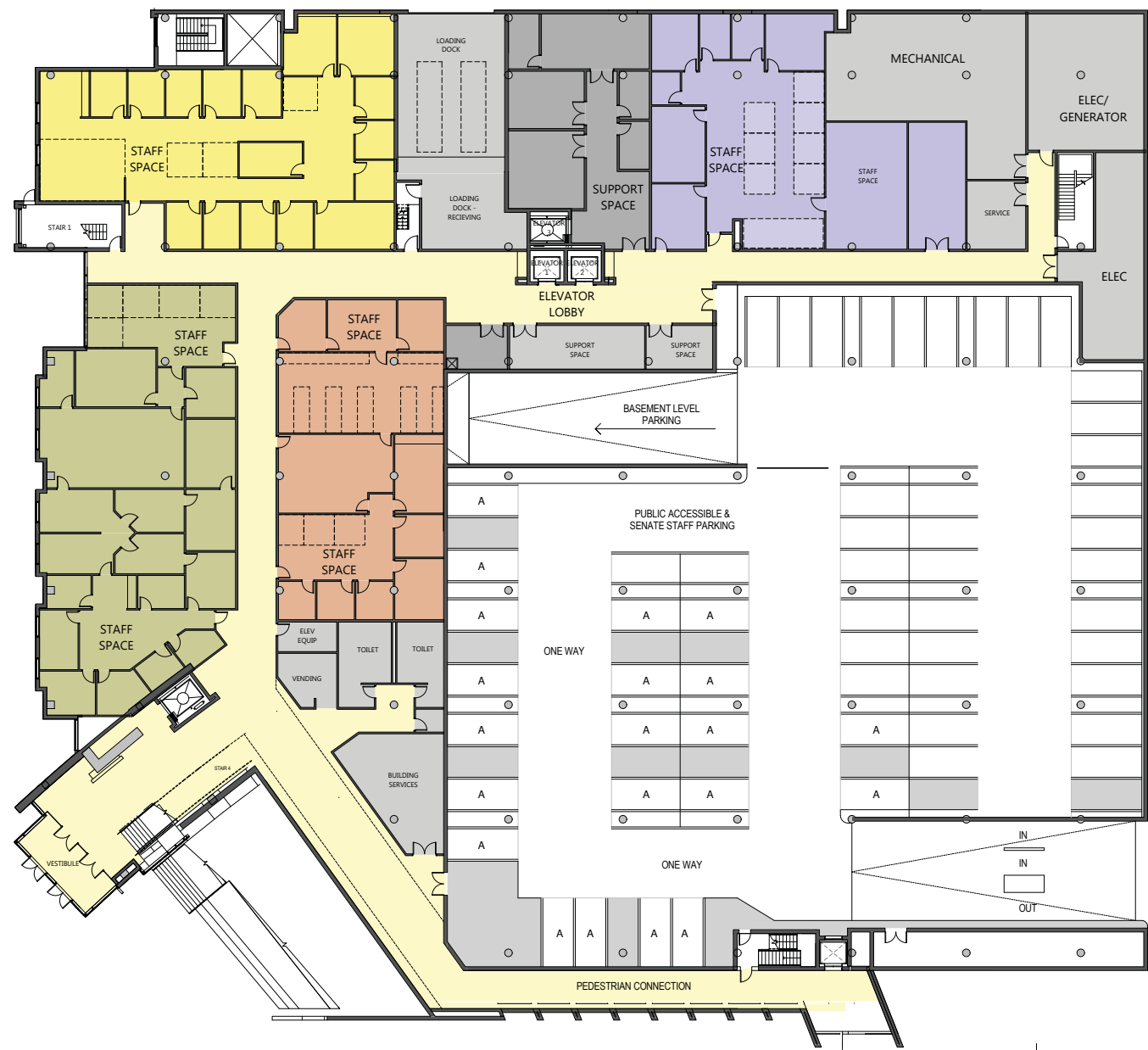




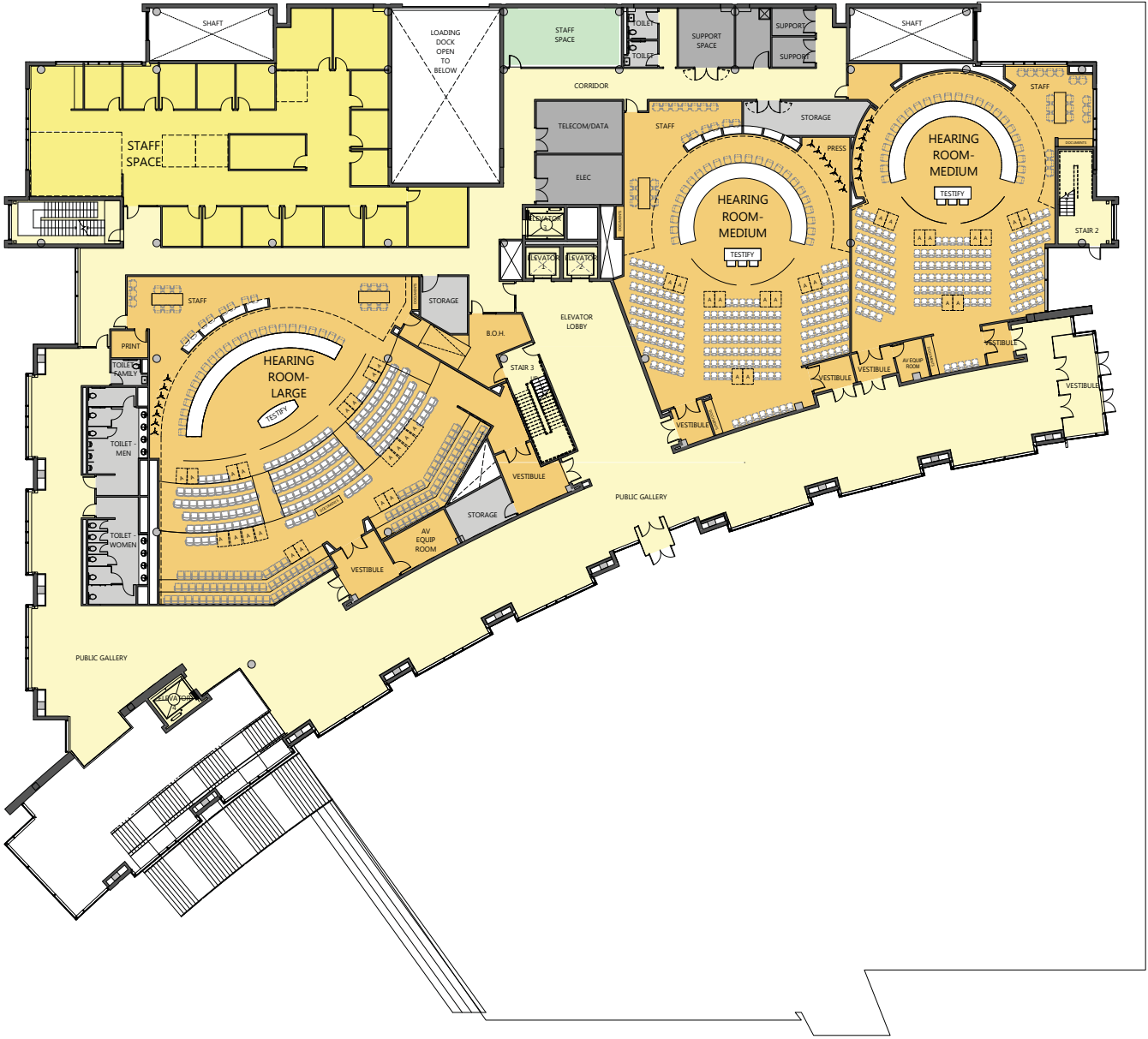
LEVEL B  
BASEMENT FLOOR



LEVEL G  
GROUND FLOOR



LEVEL 1  
FIRST FLOOR



LEVEL 2  
SECOND FLOOR (FLEX SPACE)



LEVEL 2A  
SECOND FLOOR



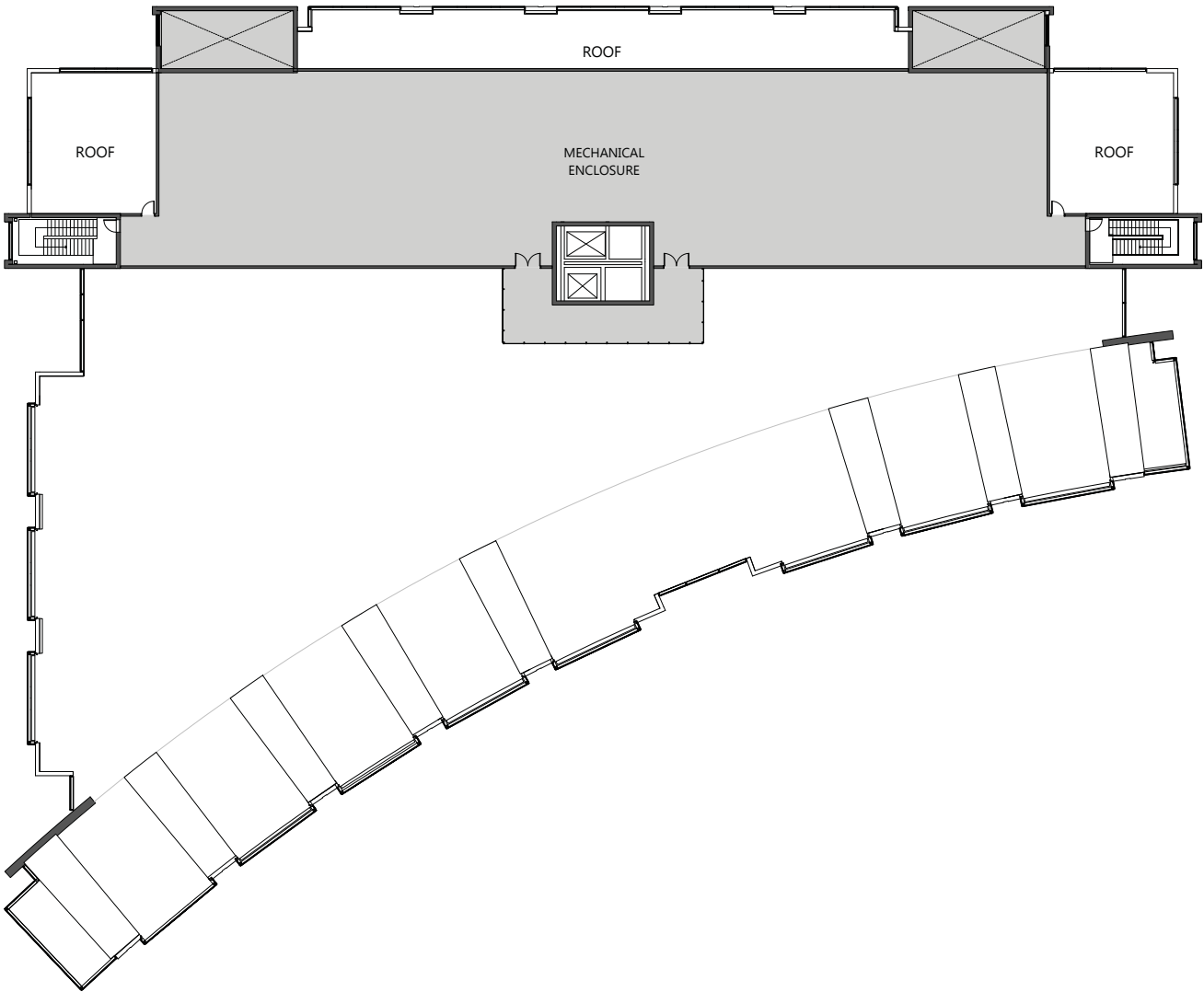
LEVEL 3  
THIRD FLOOR (FLEX SPACE)



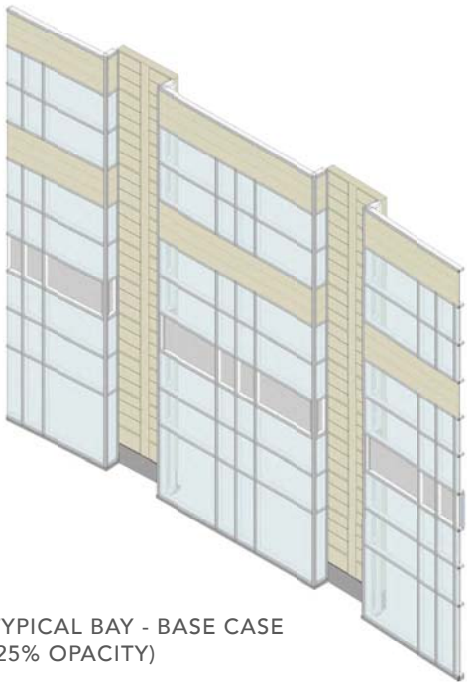
LEVEL 3A  
THIRD FLOOR



LEVEL R  
MECHANICAL ROOF LEVEL



KEY CHANGES FROM ORIGINAL CONCEPTS:  
EXTERIOR MODIFICATIONS



TYPICAL BAY - BASE CASE  
(25% OPACITY)



TYPICAL BAY - REVISED  
(44% OPACITY)



SOUTH ELEVATION - REVISED (44% OPACITY)

1. Elimination of exterior sun shade and columns
2. Elimination of reflecting pool
3. Mechanical moved to rooftop - creating interior space for 67 Senators
4. Reduction in conference room quantity and office size - creating interior space for 67 Senators
5. Simplification of the North facade - less articulation  
Less glass on the South facade - more opacity
6. Reduction in the number of landscape trees
7. Reduction in the landscape paver scope
8. Elimination of the service tunnel at parking level
9. Elimination of the 'blade' at roof level
10. Elimination of skylight options at roof level and green roof
11. Simplification of interior material palette
12. Potential elimination of exterior stair and or elevator



