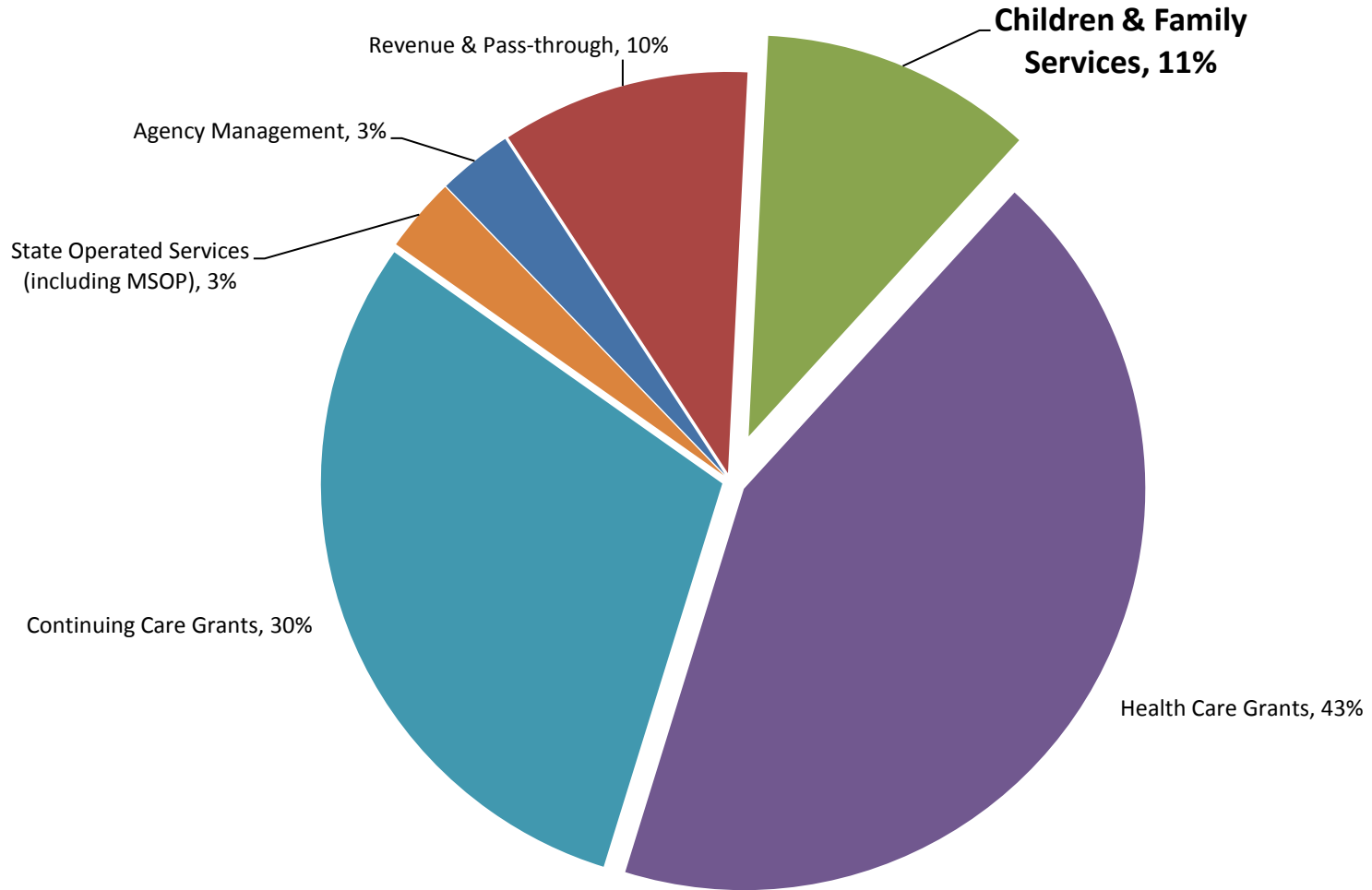


Children and Family Services

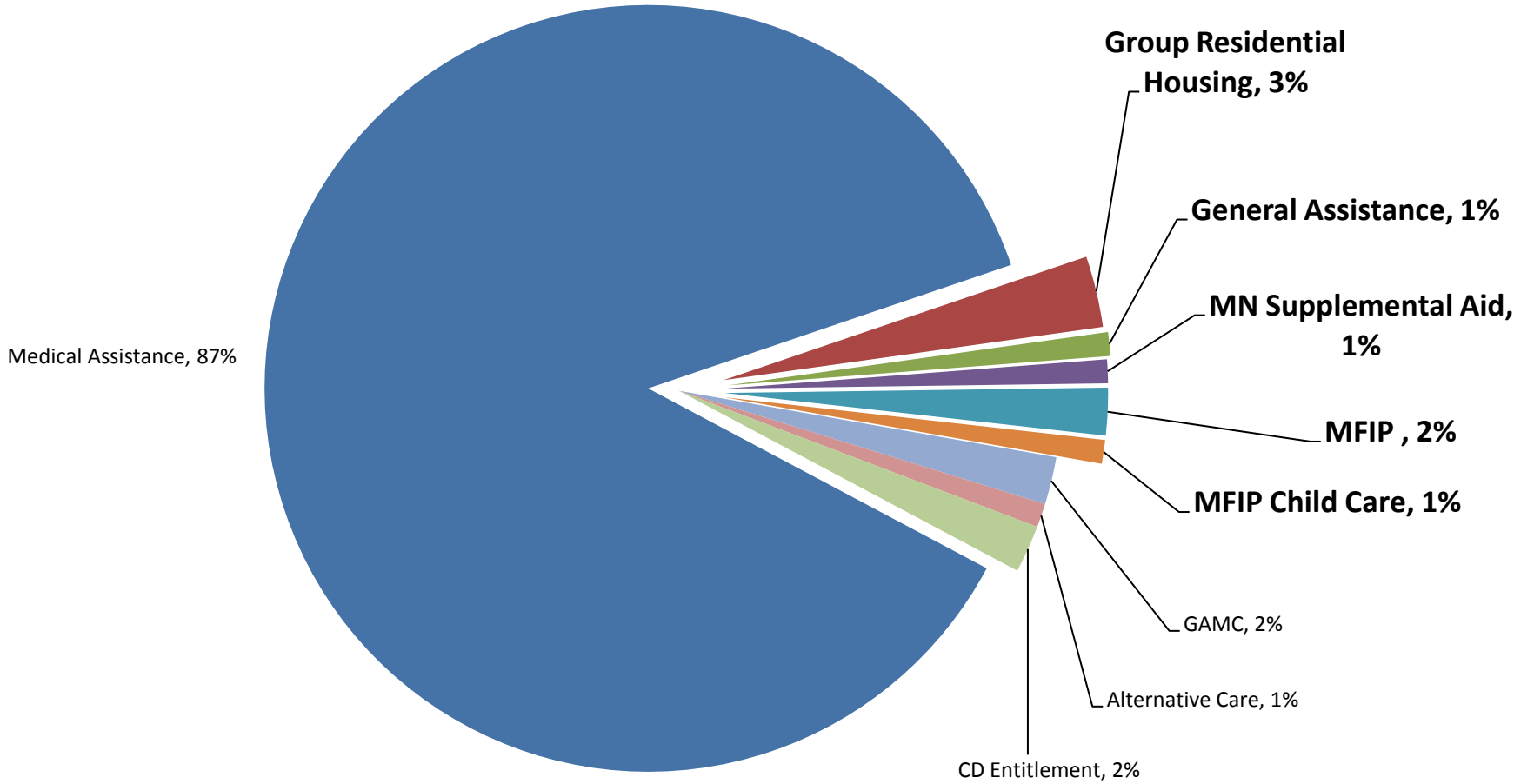
Minnesota Department of Human
Services 1/25/2011

Handouts

DHS All Fund Expenditures (CFS Grants: 11%)



Forecasted General Fund (CFS Grants: 8%)



How CFS is Staffed/ What is CFS Budget

		General Fund	TANF Fund	Special Revenue (incl. Systems)	Federal Fund	Other Fund	Total
		dollars in thousands					
PERSONNEL							
	Budget	\$6,681	\$1,069	\$31,854	\$8,231	\$2,493	\$50,329
	FTEs	83	12	367	99	35	595
NON-PERSONNEL							
	Budget	\$2,009	\$1,091	\$41,222	\$2,096	\$1,344	\$47,762
GRANTS							
	Budget	\$513,371	\$216,034	\$45	\$757,805	\$12,387	\$1,499,642
TOTAL							
	Budget	\$522,061	\$218,194	\$73,121	\$768,132	\$16,224	\$1,597,733

Major Federal Block Grants in CFS

Temporary Assistance for Needy Families (TANF) - \$263 million per year

- Provides funding to meet needs of low-income families to accomplish TANF purposes:
- Provide assistance to needy families
- End dependence of needy parents by promoting job preparation, work and marriage
- Prevent and reduce the incidence of out-of-wedlock pregnancies and encourage formation and maintenance of two-parent families.
- There is federal MOE requirement of \$176 to \$188 million per year, based on whether or not state meets federal work participation rate requirements.

Child Care Development Fund (CCDF) - \$79.8 million in FFY 2010

- Supports low-income working families through child care financial assistance and promotes children's learning by improving quality of early care and education and afterschool programs.
- Purpose is to increase availability, affordability and quality of child care services.
- There is federal match and maintenance of effort (MOE) requirements of \$48 million per year, in order to draw maximum funding available.

Social Services Block Grant (SSBG) Title XX - \$29 million per year

- Provide social services best suited to meet needs of individuals that must be directed to one or more of five broad goals:
 - Achieving or maintain economic support to prevent, reduce or eliminate dependency
 - Achieving or maintain self-sufficiency, including reduction or prevention of dependency
 - Preventing or remedying neglect, abuse or exploitation of children and adults unable to protect their own interest or preserving, rehabilitating or reuniting families
 - Preventing or reducing inappropriate institutional care by providing for community-based care, home-based care or other forms of less intensive care
 - Securing referral or admission for institutional care when other forms of care are not appropriate or providing services to individuals in institutions
- There is no federal match or maintenance of effort requirement.

Community Services Block Grant (CSBG) - \$8.3 million per year

- Grants to Community Action Agencies used to focus local, state and federal resources to support low-income families and individuals to attain the skills, knowledge and motivation to become more self-reliant.
- There is no federal match or maintenance of effort requirement.

CFS Forecast Programs

SFY 2012 as of November Forecast

Program/Description	State \$	Federal \$	Number of People Served/Average Payment
<p>MFIP/DWP Cash and Food Assistance Minnesota Family Investment Program (MFIP), Diversionary Work Program (DWP) and Work Benefit (WB) grants provide cash benefits for low-income families. MFIP is Minnesota’s Temporary Assistance for Needy Families (TANF) program and combines cash and food support. There is a lifetime limit of 5 years. DWP is a short-term, work focused program to help families avoid longer term assistance. Available for up to four months. Work Benefit is a \$25 monthly cash grant given to families who exit MFIP/DWP programs while working the number of hours required to meet federal work participation rate. Eligible families may receive WB for up to 24 months.</p>	\$84,050	\$257,361	<p>Average of 44,711 MFIP/DWP/WB families a month, with average monthly payment of \$655. Average federal food portion for MFIP family is about \$378 per month.</p> <p>Average of 3,734 DWP cases, with average monthly cash payment of \$412 Average of 3,095 WB cases, with average monthly cash payment of \$27.</p> <p>Federal funds are from TANF Block Grant and federal food support from U.S. Department of Agriculture, Food and Nutrition Service (FNS).</p>
<p>MFIP/Transition Year Child Care Assistance Grants provide financial subsidies to help low-income families pay for child care so that parents may pursue employment or education leading to employment and so that children are well-cared for and ready to learn. See also Basic Sliding Fee Child Care below.</p>	\$70,147	\$49,995	<p>Average of 9,778 families a month, with average monthly payment of \$1,024.</p> <p>Federal funds are from Child Care and Development Fund (CCDF) which is block grant to states.</p>

Program/Description	State \$	Federal \$	Number of People Served/Average Payment
<p>Minnesota Supplemental Aid (MSA) Grants provide state-funded monthly cash supplement to people who are eligible for federal Supplemental Security Income (SSI) benefits and are disabled, aged or blind.</p>	\$39,033	\$0	<p>Average of 30,444 cases a month, with average monthly payment of \$107. MOE agreement with federal Social Security Admin whereby MN agrees to provide State supplementary payments to recipients of SSI and agrees to pass along increases in federal SSI benefits. Amount that is considered part of our MOE agreement is MSA base supplement (MSA standards). Excluded from MOE are all special needs items including special diets/other special needs payments, which include payment for representative payee services, guardian or conservator service fees and necessary non-recurring home repairs. Of total MSA expenditures, all but around \$5 million per year are included in MOE.</p>
<p>General Assistance Grants provide monthly cash supplements for individuals and childless couples who cannot fully support themselves, usually due to illness/disability. Grant helps meet some of their monthly basic and emergency needs.</p>	\$50,861	\$0	<p>Average of 21,171 cases a month, with average monthly payment of \$200.</p>
<p>Group Residential Housing (GRH) Grants provide income supplements for room, board and other related housing services for people whose illnesses or disabilities prevent them from living independently. To be eligible for GRH payments, setting must be licensed by DHS as adult foster home or by Dept of Health as board and lodging establishment, a supervised living facility, a board and care home, or in some cases a housing-with-services establishment.</p>	<p>\$122,935 This includes a county share of \$1.5 m. per year.</p>	\$0	<p>Average of 19,033 people a month, with average monthly payment of \$538.</p>

CFS Non-Forecast Programs

Program/Description	State \$	Federal \$	Number of People Served/Average Payment
<p>Support Services Grants provide employment, education, training and other support services to help low-income families and people avoid or end public assistance dependency. Also fund a portion of county administration for MFIP, DWP and Work Benefit programs.</p>	\$8,715	\$110,559	MFIP employment services are provided to 6,400 people per month.
<p>Basic Sliding Fee Grants (BSF) Child Care Assistance Grants provide financial subsidies to help low-income families pay for child care so that parents may pursue employment and so that children are well-cared for and ready to learn.</p>	\$44.835 There is a county match of \$2.9 m. per year.	\$48,239	An average of 9,334 families a month, with an average monthly payment of \$857. Federal funds are from Child Care and Development Fund (CCDF) block grant to states.
<p>Child Care Development Grants promote school readiness and improve quality and availability of child care in Minnesota by providing consumer education to parents and providing activities that increase parental choice.</p>	\$1,487	\$9,016	Provides 27,000 child care referrals annually, awards 2,300 grants per year to providers to improve quality and availability of child care, supports high quality training for providers through classes offered to 35,000 participants, enrollment of more than 500 providers in the Professional Development Directory, and more than 200 scholarships for provider education and training each year. Issued over 300 Parent Aware ratings to early learning programs serving over 11,000 children in 2010.

Program/Description	State \$	Federal \$	Number of People Served/Average Payment
<p>Child Support Enforcement Grants help strengthen families by providing concrete supports in times of need. Child support is an important component in helping many families become self-sufficient and stay off welfare. Child support enforcement is administered at local level by counties acting under state’s direction and supervision. Grants provide administrative funding to counties primarily based on their performance.</p>	\$3,355	Counties earn FFP on these grants and on county expend. on child support admin.	<p>In 2009, there were approximately 247,000 child support cases and \$629 million in child support was collected and disbursed. Of that amount, \$472 million was for current support and \$157 million for overdue support. Average collection per open case with a court order was \$3,001. \$10.5 million was collected and distributed to families receiving MFIP benefits. Federal government matches 66 percent of state and county spending. It also provides funding based on performance outcomes and collection base, which is passed on to counties. In 2010, \$12 million federal incentive grants and approximately \$86 million FFP earned by counties</p>
<p>Children’s Services Grants fund a continuum of statewide child welfare services for children who are at risk of abuse or neglect, have been abused or neglected, are in out-of-home placements, are in need of adoption, or are under state guardianship.</p>	\$45,127	\$36,749	<p>In 2009: 22,000 children were assessed for abuse or neglect; 4,900 children were determined to be abused or neglected; 11,700 children were in out-of-home placements; more than 650 children under state guardianship were adopted and more than 9,000 children were supported in adoptive and relative homes.</p>
<p>Children & Community Services Grants provide funding to counties to purchase or provide social services to children and families. Includes services to clients who experience dependency, abuse, neglect, poverty, disability, chronic health conditions, mental health conditions, or other factors that may result in poor outcomes or disparities.</p>	\$64,301	\$32,275	<p>Over 350,000 people annually</p> <p>Federal funding is through the Social Services Block Grant (SSBG).</p>

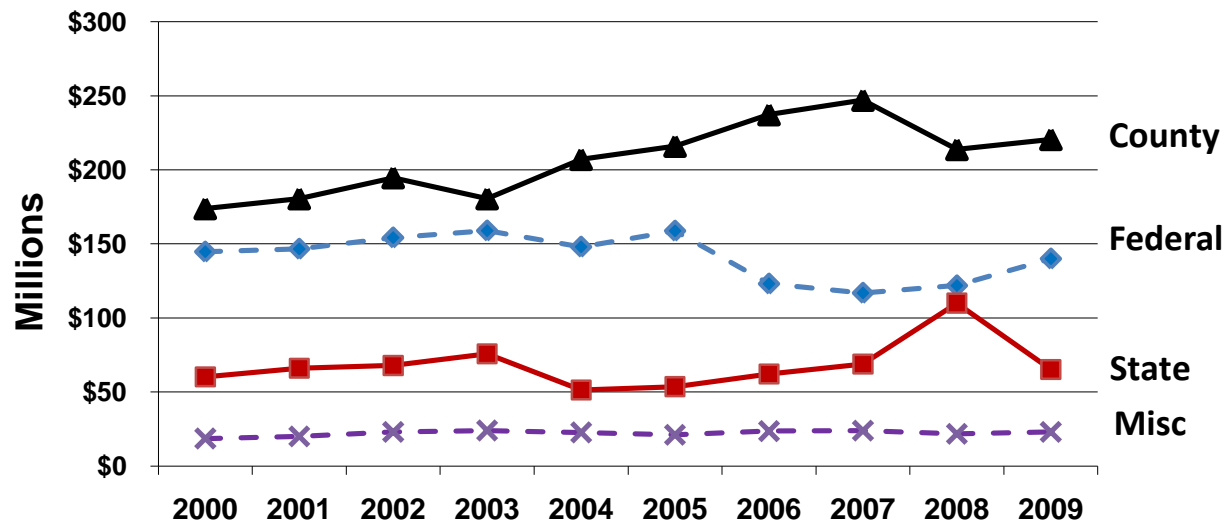
Program/Description	State \$	Federal \$	Number of People Served/Average Payment
<p>Children & Economic Support Grants provide funding for housing, food, and other services to low-income families and individuals in transition to economic stability.</p>	\$16,305	<p>\$376,918</p> <p>Of this, approx \$354 million is food support benefits</p>	<p>Provides transitional housing to 4,500 people annually and food support to more than 400,000 people each month.</p>
<p>Refugee Services Grants provide federally-funded resettlement services to help refugees rebuild their families and integrate as new Minnesotans.</p>	\$0	\$9,137	<p>A monthly average of 200 people receive federal Refugee Cash assistance, 200 receive Refugee Medical Assistance and 534 receive Social Services.</p>

Children's Services Revenue Shares – 10 year trend*

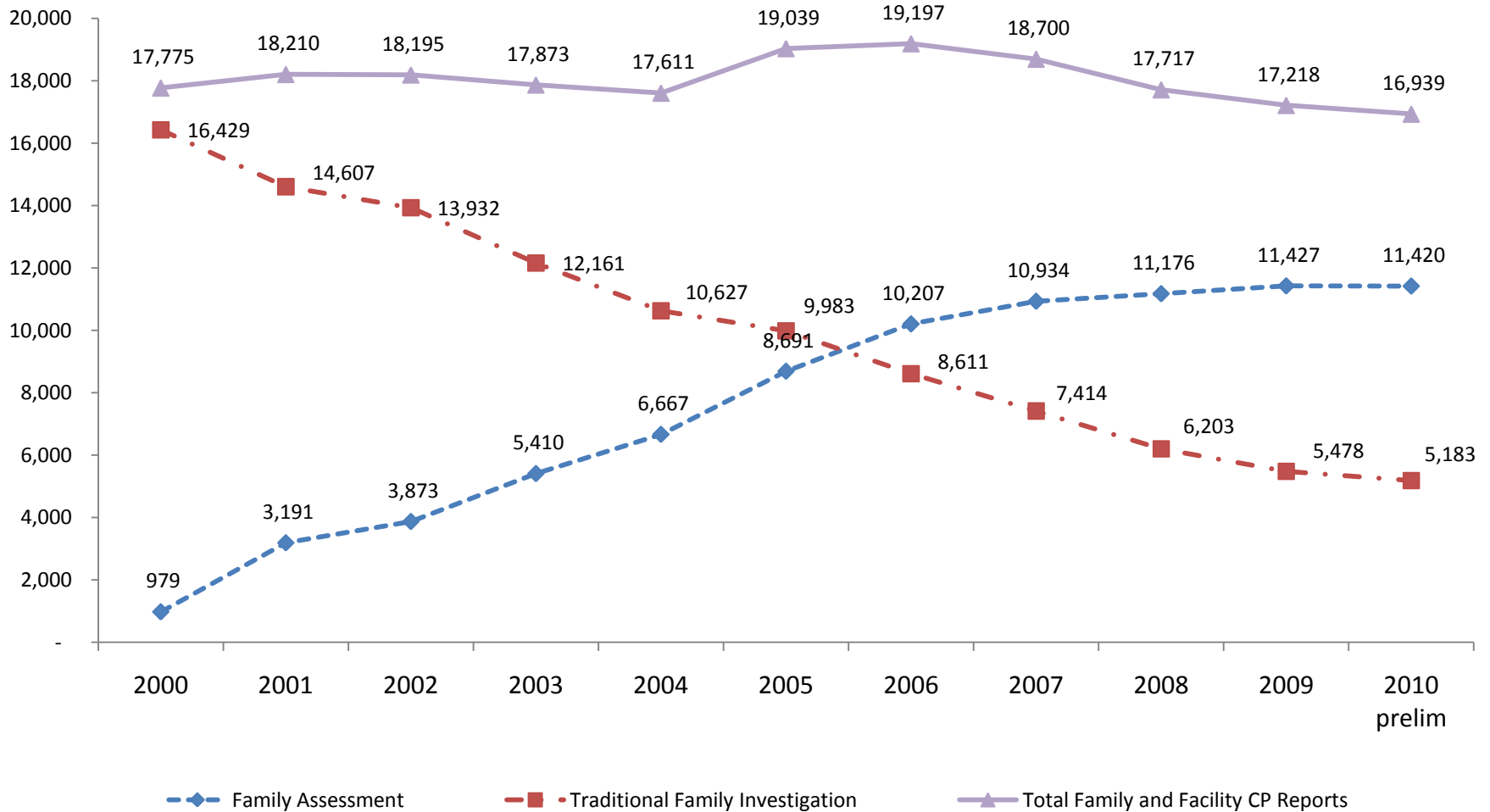
Rounded Dollars in Millions										
	2000	2001	2002	2003	2004	2005	2006	2007	2008	2009
Federal	144.7	146.6	154.2	158.9	148.0	158.8	123.1	116.9	121.9	140.0
State	60.2	66.1	67.9	75.8	51.3	53.6	62.1	68.9	110.0**	65.2
County	173.8	180.5	194.7	180.5	207.1	216.0	237.3	247.1	213.8	220.6
Misc	18.6	20.0	23.0	24.0	22.7	21.1	23.6	23.9	21.8	23.1
Total	397.3	413.3	439.9	439.3	429.2	450.2	446.3	457.0	467.7	448.9

*2000-2008 State from published data: Minnesota County Human Services Cost Report. 2009 is unpublished data as of 09/16/10

**State revenue share in 2008 included a one-time distribution of \$32.7 million from the targeted case management contingency reserve fund authorized by the 2007 legislature. Minus this one-time distribution state share would be \$77.3 million. The 2009 Minnesota Legislature recovered these funds back to the general fund.



Child Protection Reports, Family Assessments, & Family Investigations 2000–2010



Children in out-of-home care, 2000–2010

