

Personal Care Assistance Program

Department of Human Services

House Health & Human Service Finance

February 2, 2011

Brief History

- Personal Care Assistance (PCA) started 1977
- Began serving non-elderly adults with physical disabilities who could direct their own care
- Provided assistance with basic activities of daily living (ADLs)
- Goal – to prevent unnecessary and more costly admissions to nursing facilities

Changes over Time

Program expanded to serve:

- Those with intellectual and developmental disabilities
- Those with behavioral and mental health needs
- Persons of all ages
- Those who cannot direct their own care but will have services overseen by a responsible party

Services include assistance with:

- Health-related procedures/tasks
- Observation & redirection for behaviors

Impetus for 2009 PCA Changes

- DHS program integrity:
 - internal workgroup
 - external advisory group
- 2009 OLA Report on PCA
- Budget pressures

2009 PCA Reforms

- Improve accountability
- Improve provider standards
- Improve consumer protections
- Simplify and clarify requirements
- Shape the program so it is sustainable into the future

Terminology

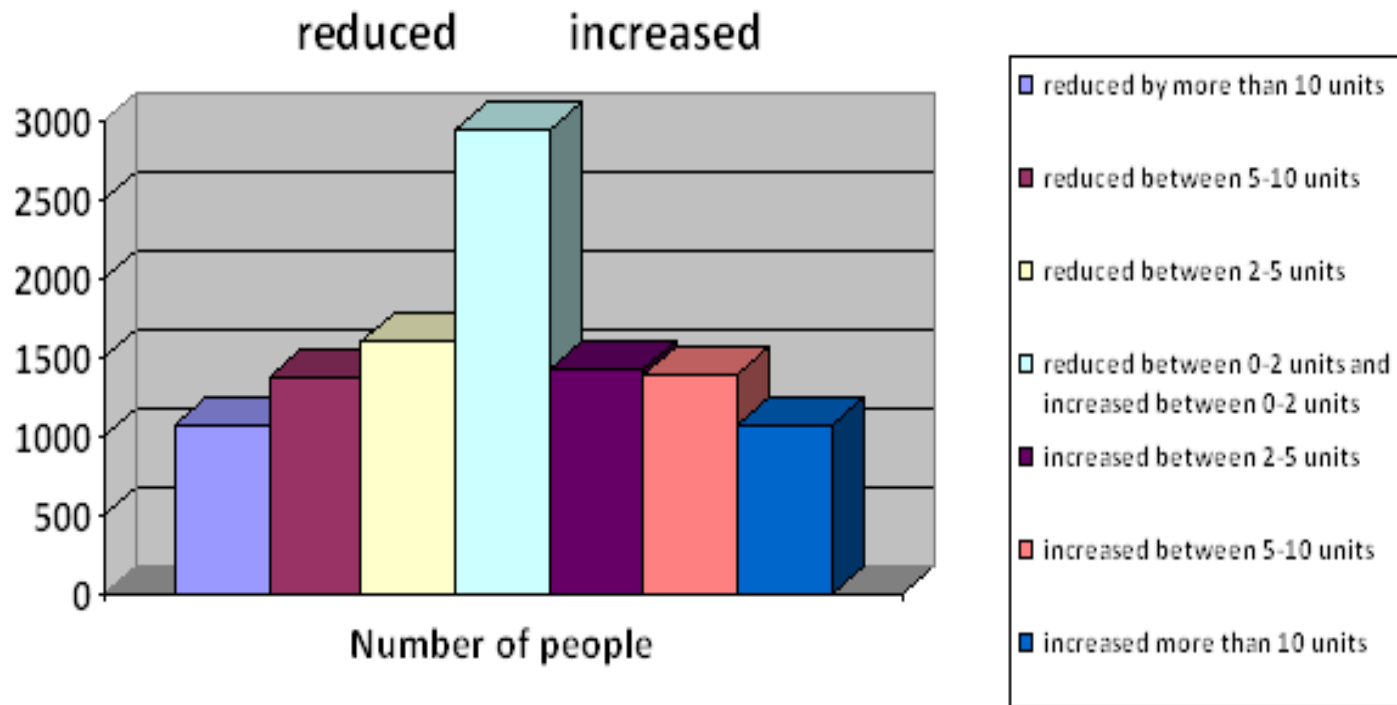
- ADLs: Eating, Toileting, Grooming, Bathing, Positioning, Mobility, Transferring, & Dressing
- Critical ADLs : Eating, Toileting, Transfers, & Mobility
- Complex Health-related: IV therapy, Tube feedings, Catheter care, Neurological interventions, Respiratory interventions, Wounds, Bowel program, & other acquired or congenital diseases/conditions
- Behaviors:
 - 1) Physical aggression towards self, others or destruction of property
 - 2) Resistive to care, verbal aggression
 - 3) Increased vulnerability due to cognitive deficits or socially inappropriate behavior

IADLs – not included in HC rating, but care can be provided
(Instrumental Activities of Daily Living)

Assessment Reform

- Assessment restructured to be more objective and consistent
- Assessment Home care rating and units now determined by:
 - (1) Dependency in activities of daily living;
 - (2) Complex health-related procedures and tasks;
 - (3) Level 1 behaviors;
 - (4) Number of critical activities of daily living
- Trainings held for assessors initially & refresher classes
- Reassessments completed for all recipients

Impact on Recipients



PCA Provider Agencies

- Background study – PCAs, Qualified Professional, Provider Agency owners & managers
- Required agency training
- Required qualified professional for supervision of PCAs
- Annual review of enrollment as a Provider

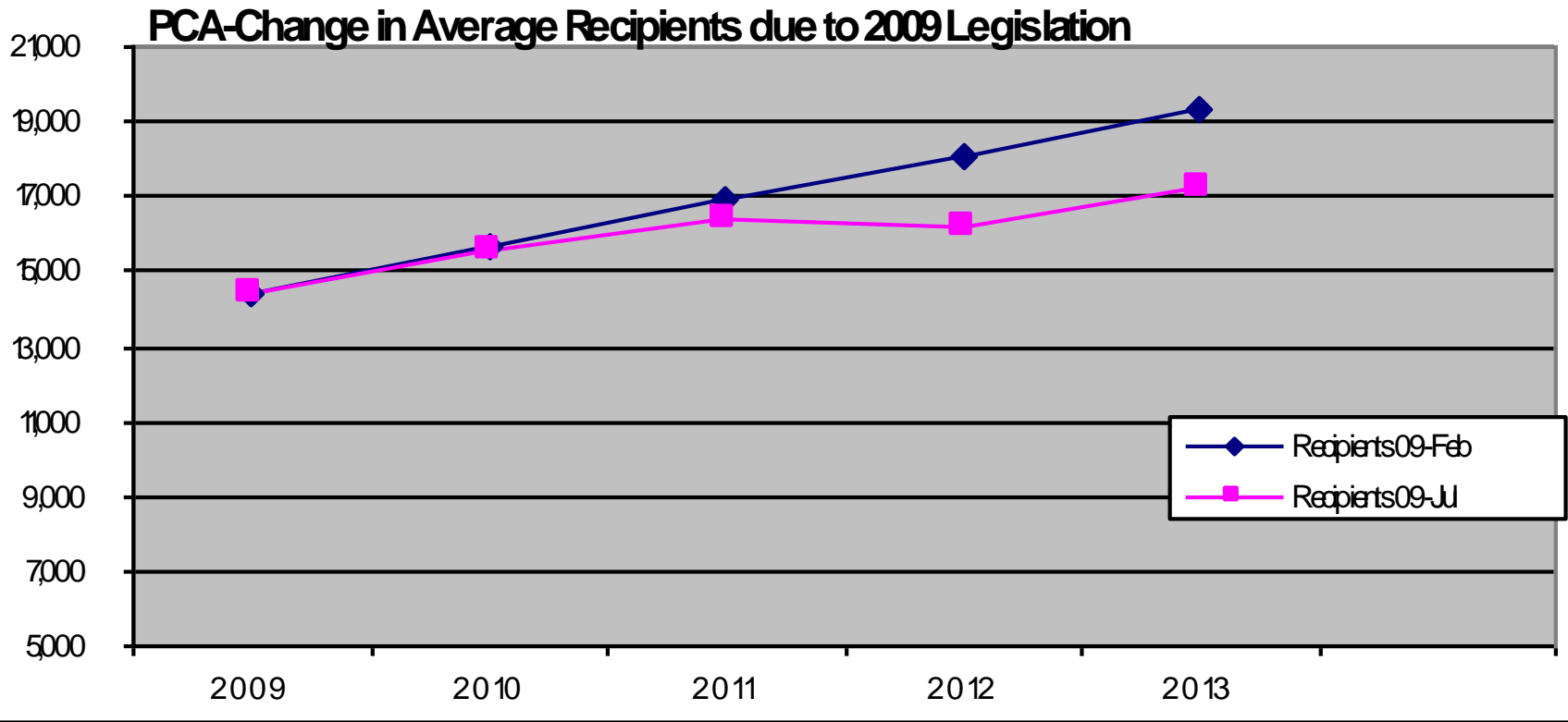
Individual PCAs

- Must pass background study prior to providing services
- Must complete an online training and pass the required test
- Required to demonstrate competency , attend trainings, and be regularly supervised

Upcoming access changes

- July 1, 2011 -implementation of access criteria change
- About 2100 Fee for Service recipients will be no longer meet access criteria
- More robust referral process
- \$4 million appropriated for alternative services
 - FY 2012 =\$3,237,000
 - FY 2013 = \$4,856,000

Impacts of 2009 Reforms-FFS



Impacts of 2009 Reform-FFS

