

2026 Inflow and infiltration grant program

Protecting health, homes, and environment

Gov. Walz recommends **\$5 million** in general obligation bonds to the Metropolitan Council for grants to cities to repair sewer pipes that connect to the regional wastewater system. This grant program traditionally covers up to 50% of the inflow and infiltration repairs of a project's cost.

BENEFITING COMMUNITIES

Protecting public and environmental health by preventing sewer overflows to basements and waterways.

Allowing our economy to grow and prosper without the cost of building larger infrastructure.

Saving money by reducing the amount of water that needs to be transported and treated.

INVESTING IN INFLOW AND INFILTRATION REPAIRS

Since 2004, the Met Council's inflow and infiltration program has benefited from local, regional, and state investments to reduce clear water's impact on the system. Many of those dollars have gone to improve pipes maintained by local governments, or to the regional sewer interceptor system.

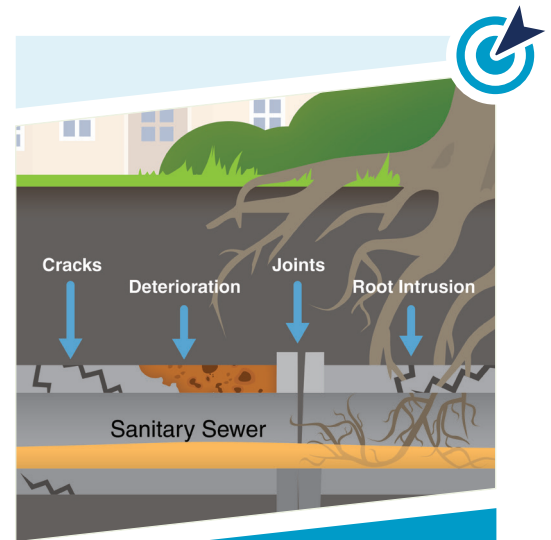
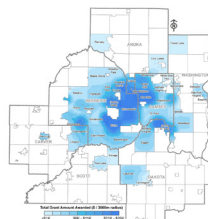
- Deferred an estimated \$1 billion in capacity improvements.
- Allows the existing system to serve the anticipated regional growth – estimated 13% population growth between 2030 and 2050.
- Helps keep the Met Council's wastewater rates competitive – about 36% below the national average of peer agencies.

GRANTS INVESTED ACROSS THE REGION

State bonding grant allocations

2010-2020 - \$24.25 million

The Met Council is also allocating an additional \$27 million in state bonds from the 2023 and 2025 legislative sessions.



KEEPING CLEAR WATER OUT OF WASTEWATER

When pipes in the local wastewater collection system experience the cracks and deterioration that come with age, or when roots break through the pipes, that allows stormwater and groundwater into the system. That water is called inflow and infiltration. When it overloads the system, it can cause costly sewer backups into homes and buildings, or sewer overflows into rivers and lakes.

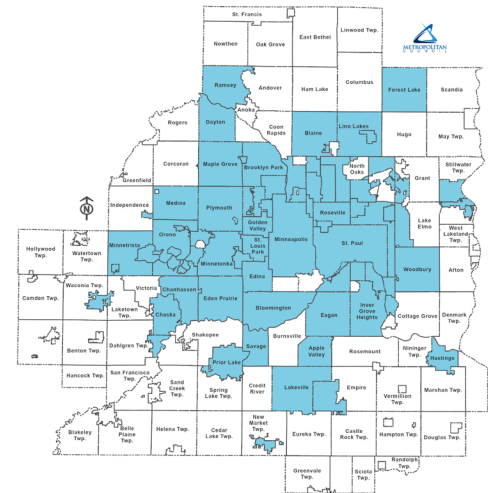
COMMUNITIES IMPACTED BY INFLOW AND INFILTRATION

Apple Valley	Hopkins	Oakdale
Arden Hills	Inver Grove Heights	Orono
Bayport	Lakeville	Osseo
Birchwood	Lauderdale	Plymouth
Blaine	Lexington	Prior Lake
Bloomington	Lilydale	Ramsey
Brooklyn Center	Lino Lakes	Robbinsdale
Brooklyn Park	Little Canada	Roseville
Carver	Long Lake	Savage
Centerville	Mahtomedi	Shoreview
Chanhausen	Maple Grove	Shorewood
Chaska	Maple Plain	South St. Paul
Columbia Heights	Maplewood	Spring Park
Crystal	Medicine Lake	St. Anthony
Dayton	Medina	St. Bonifacius
Deephaven	Mendota	St. Louis Park
Eagan	Mendota Heights	St. Paul
Eden Prairie	Minneapolis	St. Paul Park
Edina	Minnetonka	Stillwater
Elko-New Market	Minnetonka Beach	Tonka Bay
Excelsior	Minnetrista	Vadnais Heights
Falcon Heights	Mound	Waconia
Farmington	Mounds View	Wayzata
Forest Lake	New Brighton	West St. Paul
Fridley	New Hope	White Bear Township
Golden Valley	Newport	Woodbury
Greenwood	North St. Paul	
Hastings	Oak Park Heights	

For more information on inflow and infiltration

Visit <https://metro council.org/Wastewater-Water/Planning/Wastewater/Inflow-and-Infiltration.aspx>

Contact Judd Schetnan at judd.schetnan@metc.state.mn.us



Our wastewater rates are **36%** below the national average