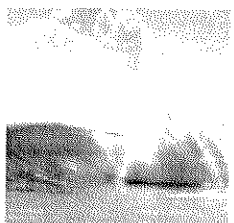
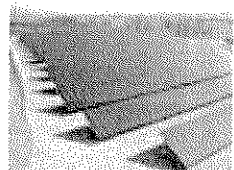
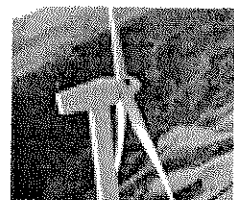


EDF RENEWABLE ENERGY

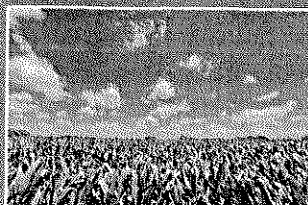
HOUSE ENERGY COMMITTEE

January 2013

INTEGRATED OPERATOR IN NORTH AMERICA



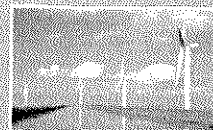
**Origination and
Development**



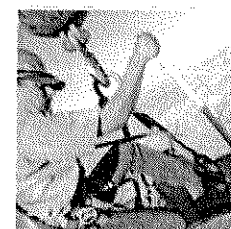
**Transaction and
Construction**



**Generation and
Sale of assets (DSSA)**



**Operations and
Maintenance**



**4.5 GW
developed**

**1.3 GW
under
construction
in 2012**

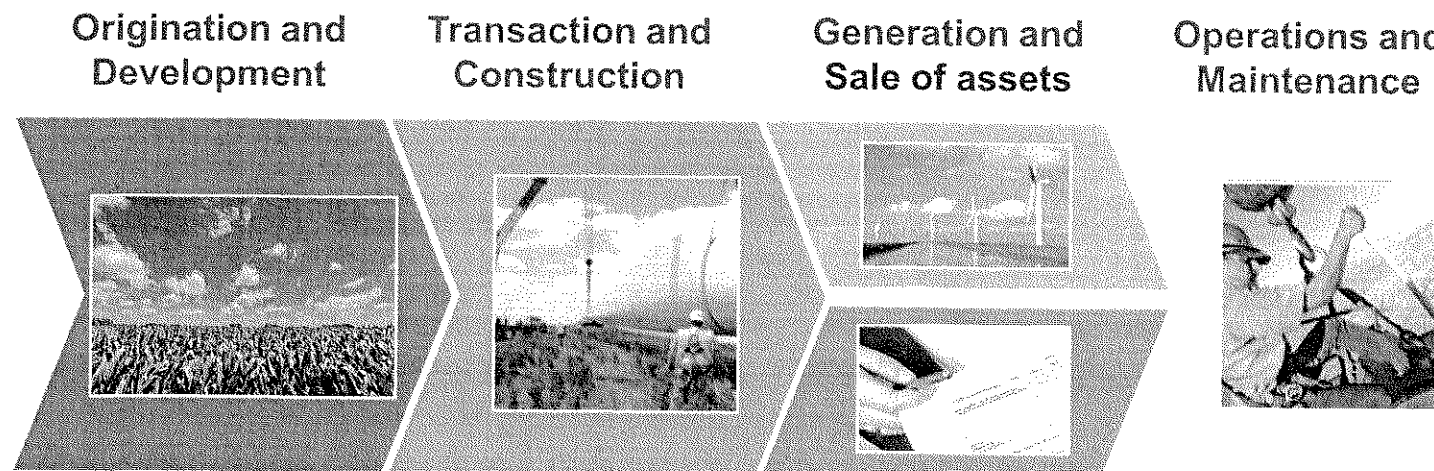
**1.6 GW
owned and
operated**

**6 GW
operated**

As of September 30 2012

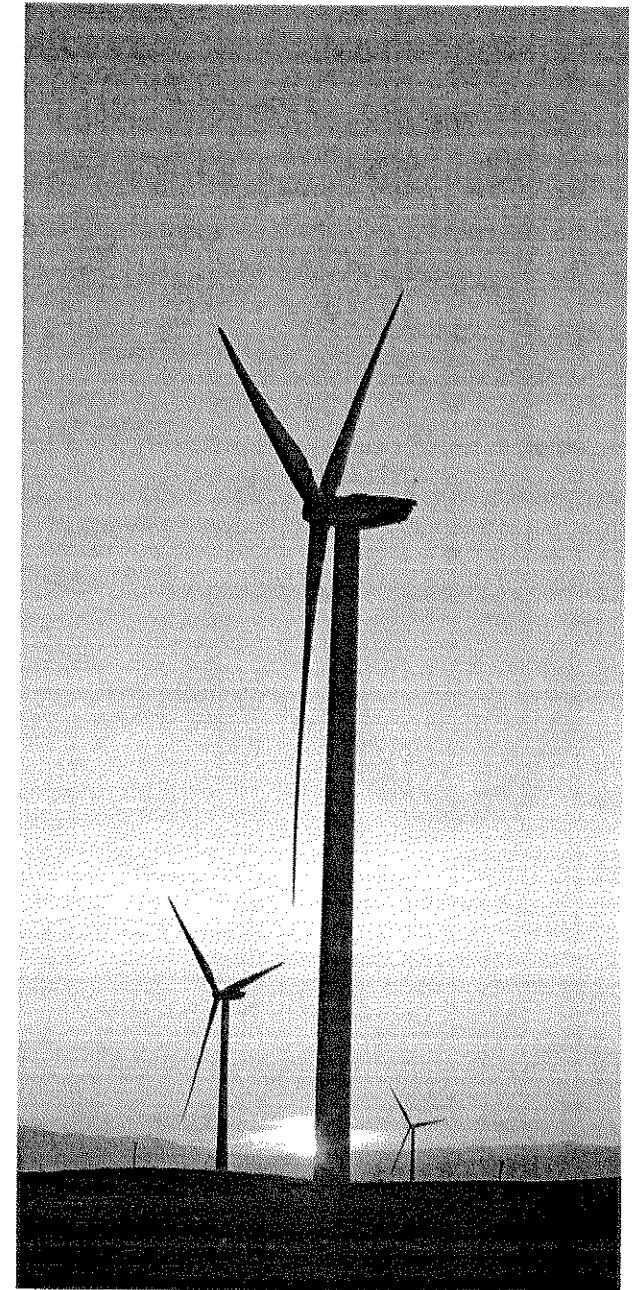
THE DEVELOPMENT CYCLE

- ❖ The timeframe for the development cycle can vary from two to ten years. Long leads times are attributed to due diligence in a range of areas from geographic and environmental factors to title and financing.
- ❖ During the development process consultants in a variety of areas are hired throughout Minnesota, including, but not limited to, surveyors, environmental specialists, law firms, general contractors and engineers.
- ❖ During construction, hundreds of Minnesotans are employed as electricians, construction workers, crane operators, administrative assistants, truck drivers, etc.

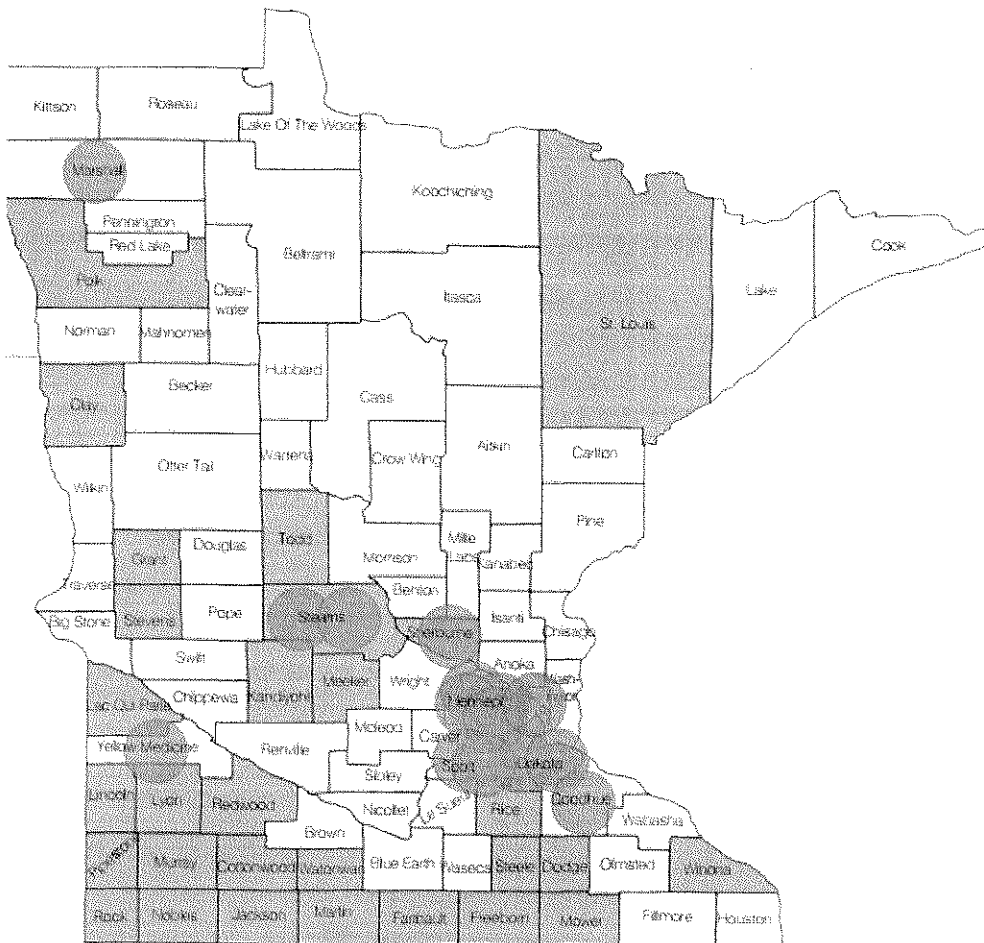


POST CONSTRUCTION: OPERATIONS AND MAINTENANCE

- ❖ Operations and Maintenance facilities throughout Minnesota provide long term, full time employment in rural areas throughout Minnesota
- ❖ Economic benefit to rural communities
 - Community outreach, scholarship, sponsorships
 - Sustainable income to farmers
 - Income and employment by the farm
 - Increased tax base paid by the project owner



INNOVATIVE POLICY HAS MADE MINNESOTA A LEADER IN WIND



- ❖ Minnesota ranks fifth in the nation in most installed capacity, trailing Illinois by 140 MW
- ❖ 12.7% of electricity is from wind
- ❖ Minnesota has 2,717 MW of wind online
- ❖ Approximately 3,000 jobs were supported by wind in 2011 in MN
- ❖ Over \$7.6M was paid in local property taxes
- ❖ Over \$8M was paid to landowners in land lease payments

Blue counties have wind projects.

Green dots are online wind energy manufacturing facilities.