



Center for Excellence in Supported Decision Making

Minnesota House Committee on Human Services
Finance and Policy

February 15, 2022

1

Where we are headed

- ◆ Who is Volunteers of America
- ◆ Our Minnesota footprint
- ◆ Our impact
- ◆ Helping at-risk and/or vulnerable older adults- Center for Excellence in Supported Decision Making (CESDM)



2

Volunteers of America Minnesota founded in 1896

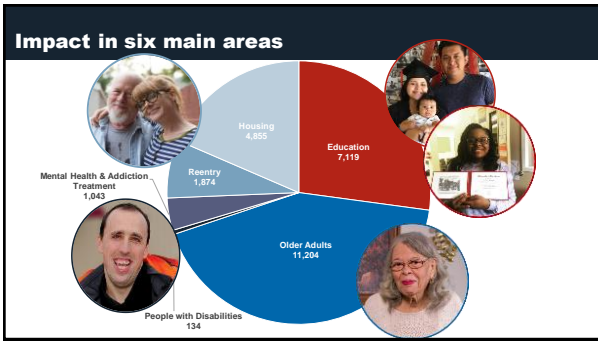


TODAY



- ◆ 1,875 staff in 92 locations
- ◆ \$110 million in services
- ◆ Over 22,000 people served

3



4

HF 2840 Preserves Minnesota's Center for Excellence in Supported Decision Making

Minnesota has the power to help families navigate complex decisions and systems

5

What is guardianship?

www.voatmnwi.org/cedm

GOAL – PROTECT AT-RISK OLDER ADULTS

- Position of being legally responsible for the care of someone who is unable to manage their own affairs
- Typically recommended for an adult with a cognitive, psychiatric or intellectual disability
- Guardianship removes considerable rights, so should be carefully considered

6

Why do people seek guardianship?



www.voamnwi.org/cesdm

SUPPORTING AT-RISK ADULTS & CAREGIVERS

- ◆ People seek guardianship or conservatorship because they are **concerned about safety**
- ◆ Caregivers may not know the spectrum of decision-making **options**
- ◆ Families and professionals **need guidance** to thoroughly evaluate less restrictive interventions – **because it's the law**

7

Guardianship is personal, complicated and expensive



www.voamnwi.org/cesdm

AN EMERGING ISSUE

- ◆ **26,203** Minnesota adults live under guardianship
- ◆ **2175+** new guardianship petitions filed in 2020
- ◆ **\$4,000 to \$6,000** the estimated cost to establish a guardianship
- ◆ **20%** the percent of people aged 65 by 2030, which represents a **doubling of the population**

8

Our solution – Statewide model of excellence to improve guardianships and promote alternatives




www.voamnwi.org/cesdm

CESDM ESTABLISHED IN 2016

- ◆ **Awarded** Federal Administration for Community Living 2-year grant of \$1million
- ◆ **Expanded** upon work of Protective Services
- ◆ **Built upon partnerships and collaboration** from non-profits, guardianship providers, DHS, Ombudsman, advocacy organizations
- ◆ **Evaluated** by Wilder Research

9

CESDM impacts individuals/families/caregivers, communities and whole systems



Center for Excellence in Supported Decision Making (CESDM)

WHAT ?

- ▶ Conduct in-depth **phone-based consultation, information, advice and referral**; virtual Guardianship Info Clinic
- ▶ Provide **in-person assessments and caregiver support**
- ▶ Offer **legal/technical advice** and facilitation of legal tools
- ▶ **Train professionals and community**

WHO ?

Works with **older adults and individuals with disabilities and their families**, as well as **cross-sector professionals**

WHERE ?

Serves people **across the state**

10

CESDM builds tools to empower informed decision making



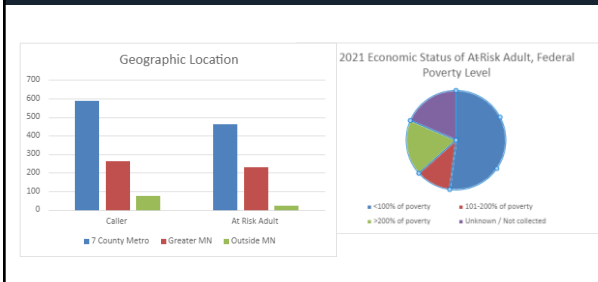
www.vcammnwi.org/cesdm

2021 BY THE NUMBERS

- ▶ Fielding **1017+ in-depth consultations** on the Guardianship Information Line
- ▶ **43 trainings** completed with **3300+ professionals and community members**
- ▶ Built the WINGS MN network to over **1590+ people across the state**

11

In 2021, the Guardianship Information Line reached older adults, caregivers and providers across the state

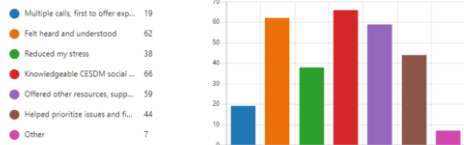


12

In 2021, the Guardianship Information Line reached older adults, caregivers and providers across the state

7. What was most helpful to you about your interaction with CESDM social worker(s)? Check all that apply.

[More Details](#)



13

Leverages cross-sector collaborators



CO-FACILITATOR OF WINGS MN

- ◆ MN Judicial Branch, district courts, private sector and legal aid attorneys
- ◆ MN Department of Human Services
- ◆ Offices of Ombudsman of LTC and MH/DD
- ◆ Professionals and non-profit guardians
- ◆ Families

14

Focus on outcomes-based results



www.voamnwj.org/cesdm

HELP FOR AT-RISK ADULTS

- ◆ **Reduction of court costs** and petitions for Guardianship
- ◆ General improvement of **statewide standards and practices**
- ◆ **Reduction** of unnecessary loss of rights
- ◆ **Improvement of well-being** and quality of life

15

Focus on state-wide impact



www.voanrwi.org/cesdm

MICRO, MEZZO, MACRO LEVEL STATE-WIDE IMPACT

- ▶ **Making data-informed decisions** that improve lives through research and evaluation
- ▶ **State-wide client impact**
- ▶ **Whole systems impact**, detecting and responding to trends

16

HF 2840: Investment in Supported Decision Making



Center for Excellence in Supported Decision Making



- ▶ Support **Guardianship Information Line** and **direct social work & legal representation**, regardless of ability to pay
- ▶ Investment in **training, education, consultation and network building** to explore alternatives to guardianship



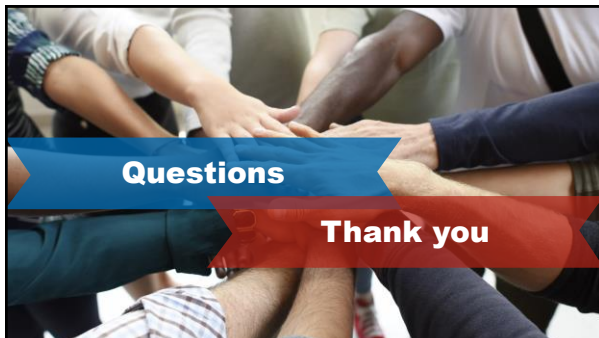
- ▶ Greater **accountability and policies**
- ▶ **Build a system** that supports families and protects rights while promoting safety and health

INVESTMENT



- ▶ **Requires \$600,000 public sector support**

17



18

Contact Information

◆ **Julie Manworren**
President & CEO
Volunteers of America Minnesota
julie.manworren@voamn.org or 952.945.4004

◆ **Anita Raymond LISW, CMC**
Program Director
Center for Excellence in Supported Decision Making
araymond@voamn.org or 952.945.4172
