

**Mission, Vision, Values, Priorities**

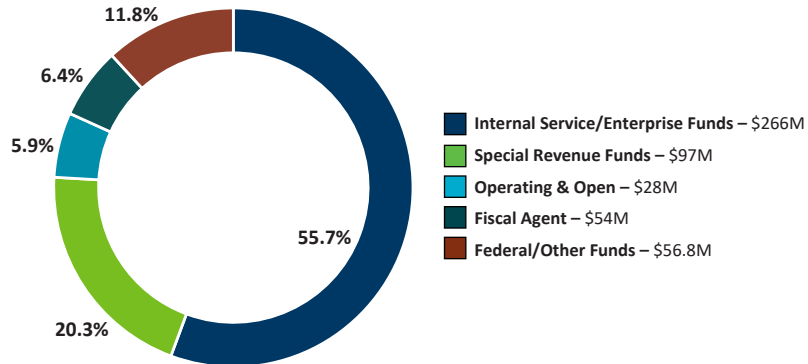


**Recent Accomplishments**

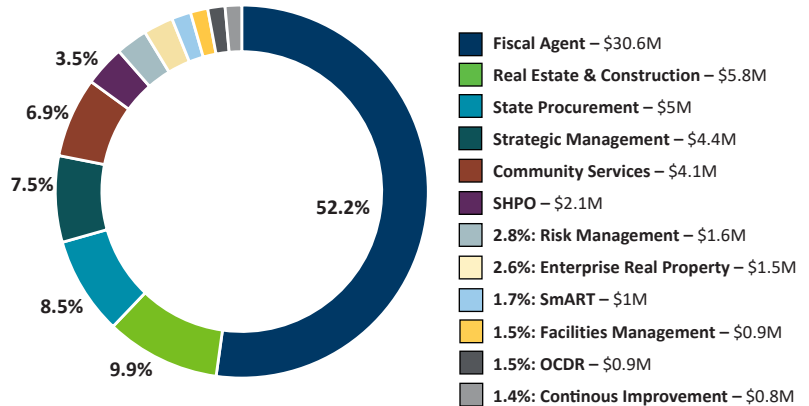
- \$29M state contracts cost avoidance for government entities in FY21 & FY22 by negotiating better pricing.
- 16% reduction in energy consumption in the 23 state buildings operated by Admin since 2008.
- \$22M returned to state agencies as a result of 4,649 surplus property items sold via Admin auctions.
- Increased fuel efficiency to 31 miles per gallon, on average, for vehicle replacements in FY22.
- Helped prevent more than 5,000 injuries to state employees by leading the statewide injury reduction effort, MnSAFE.
- Processed 16M pieces of mail and achieved \$1.7M in postage savings in FY22.
- More than doubled the number of small agencies and boards that are served by our HR managerial and fiscal services support since 2019.

**FY2022-2023 Budget**

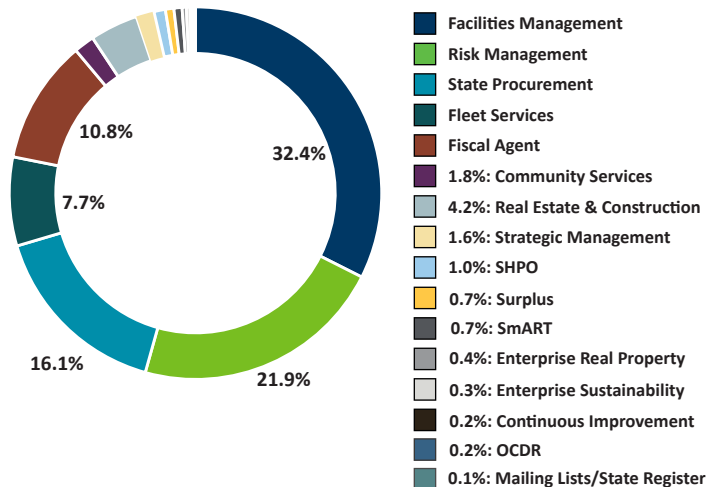
**All Funds (\$501.8M)**



**General Fund (\$58.7M)**



**All Funds by Division**



## By the Numbers

## Major Functions



**\$3 billion**

*goods and services purchases*

### State Procurement

Enterprise-wide coordination of state procurement helps achieve best value for government by consolidating purchases, standardizing processes, aggressively negotiating contract pricing, and using common technology solutions.



**23**

*state-owned buildings*

### Facilities Management

Maintenance, engineering, and energy retrofits ensure well-maintained, efficiently run buildings for the daily operations of government.



**800**

*property leases*

**290**

*construction projects*

### Real Estate and Construction

Provide oversight and management of capital construction projects, ensure facility solutions that meet state agencies' space needs, and maintain a database of all state-owned assets.



**3,500**

*stakeholders trained on data practices*

### Community Services

Educate citizens on their rights to access government data, support certain disability services, promote use of assistive technology, provide relevant demographic analysis, provide archaeological services, and assist the enterprise with grants management.



**2,030**

*fleet vehicles*

### Fleet and Surplus Services

Manage the state fleet and assist agencies with liquidating assets that are no longer needed.



**5,000**

*fewer injuries to state employees*

### Government-to-Government Services

Small agency administrative support, workers compensation for state employees, insurance of state property (buildings and automotive).



**53.7%**

*reduced Capitol Complex carbon emissions since 2008*

### Enterprise Sustainability

Assist state agencies' efforts to reduce greenhouse gas emissions and to achieve the state's sustainability goals.

## Highlighted Initiatives

### Facilities Strategic Plan

Develop a plan to address the future workplace and changing office space needs across state government.

### Office of Equity in Procurement

Advance contracting opportunities for Minnesota small businesses owned by women, minorities, and veterans.