

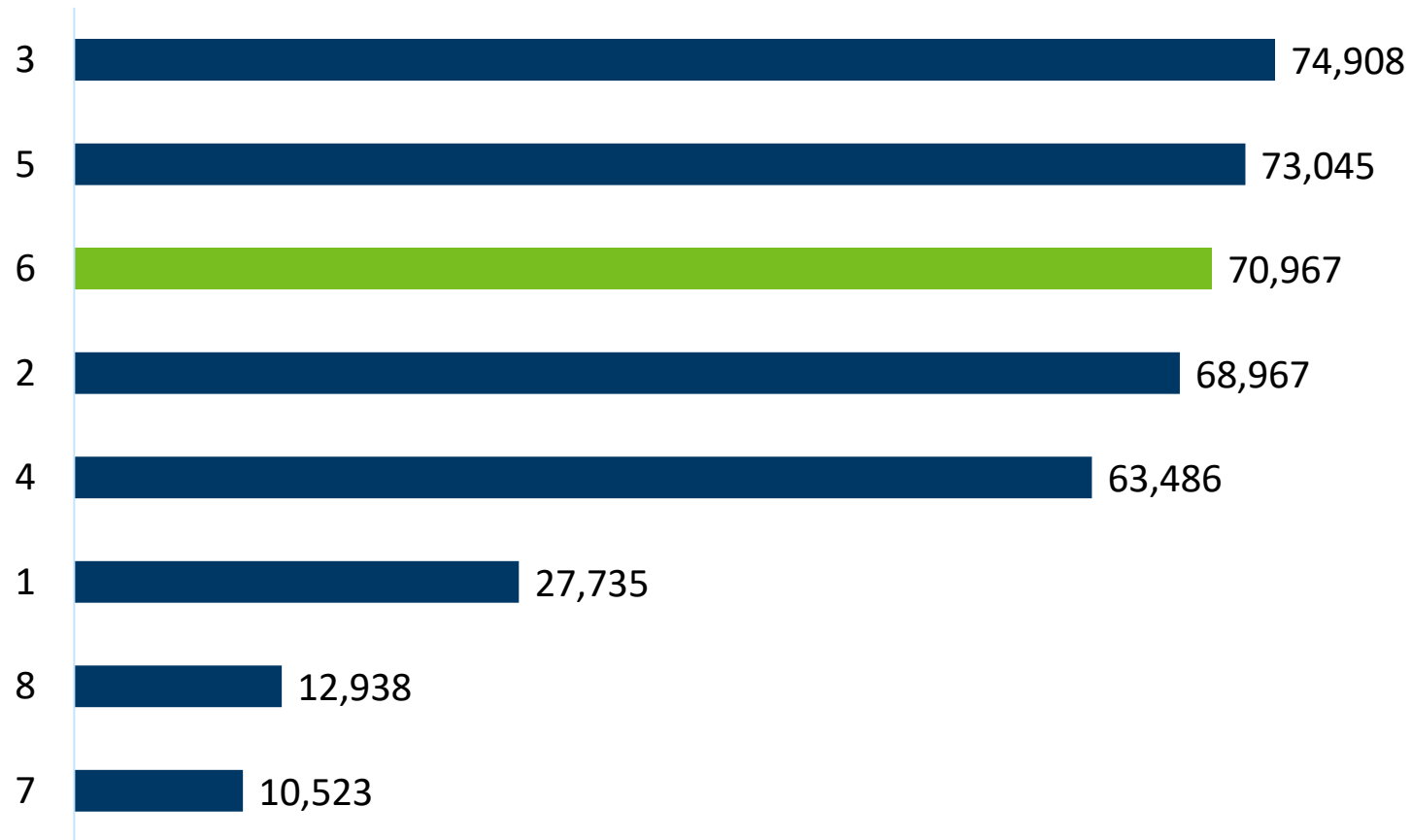


Population Change in Congressional District 6

Susan Brower | Minnesota State Demographer

Growth in Minnesota's U.S. Congressional Districts

Population Change by Congressional District, 2010-2020

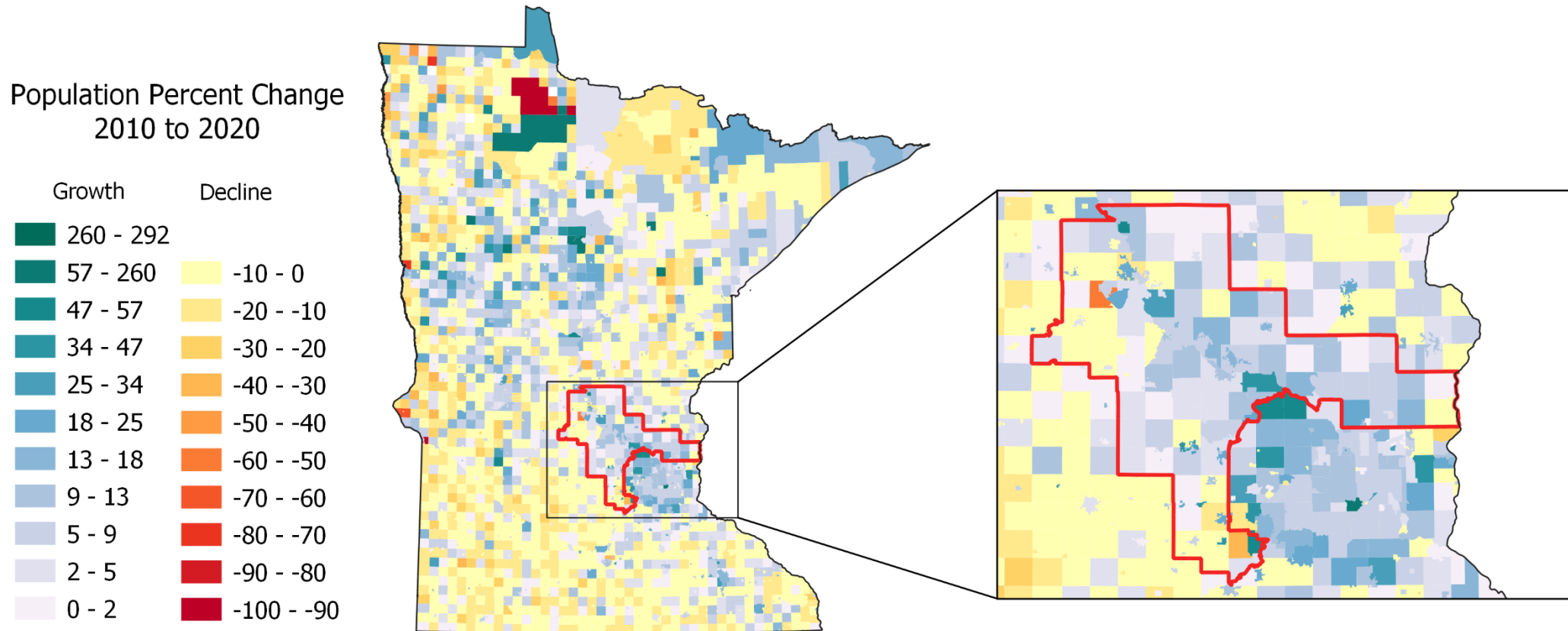


Ideal population size

- 2020: 713,312
- 2010: 662,991

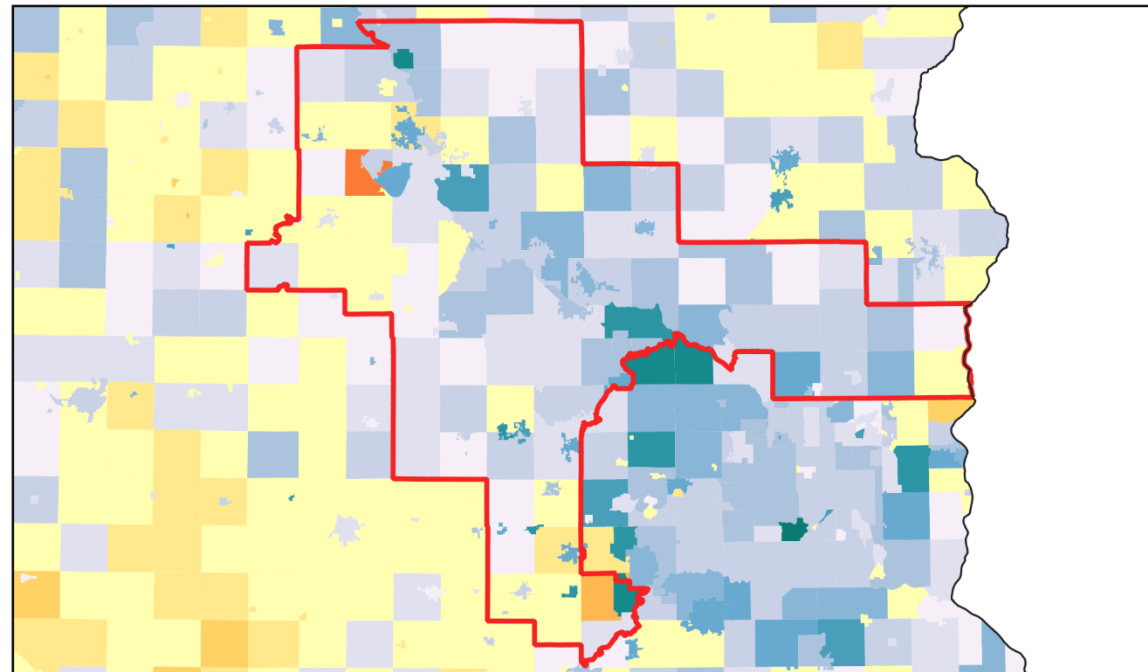
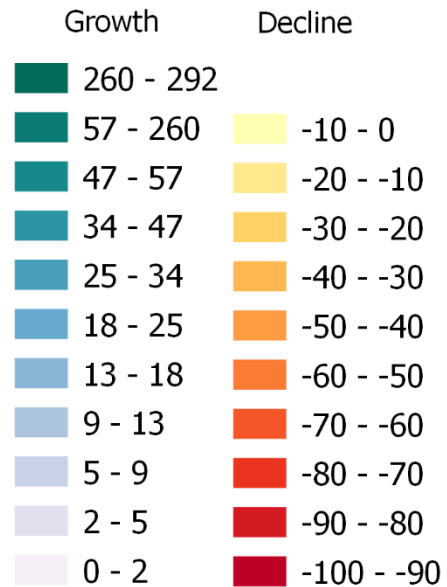
Source: U.S. Census Bureau, 2010 and 2020 Censuses

Percent Change in the Cities and Townships of District 6



A Closer Look at the Change in District 6

Population Percent Change
2010 to 2020



Population Change in Congressional District 6

	2010	2020	Percent Difference
White	605,506	621,045	2.6%
Black or African American	13,765	33,231	141.4%
Native American	2,511	2,520	0.4%
Asian	15,226	20,030	31.6%
Native Hawaiian and Other Pacific Islander	169	194	14.8%
Some Other Race	423	2,422	472.6%
Multiple Races	10,048	29,041	189.0%
Hispanic or Latino	15,342	25,474	66.0%
Total	662,990	733,957	10.7%

Changes in Data Collection

- Changes to the race and ethnicity questions on the 2020 Census allowed for more opportunity to write in racial and ethnic groups.
- This has painted a better picture of how individuals view themselves, which in turn has shown that we are a more multiracial society than previous data has been able to show.
- While not solely responsible for the changes, it has corresponded with an increase in the “Some other race” and Multiple race categories.

Other Data Considerations

- The 2020 Census was conducted during a world-wide pandemic, which required the Census Bureau to make several adjustments to the operational plan.
- There was unprecedented uncertainty regarding aspects of the Census—even before the pandemic—that caused concern regarding individuals' willingness to respond to the Census.
- This is the first census to implement Differential Privacy (DP) as the Disclosure Avoidance System (DAS) to protect respondents' confidentiality.

Thank you again!

Susan Brower, PhD

susan.brower@state.mn.us