



# RICHFIELD EMERGENCY WATER INTERCONNECT 2026 CAPITAL INVESTMENT REQUEST

**The provision of water is an essential Municipal service**  
Richfield's water distribution system is strong but not infallible

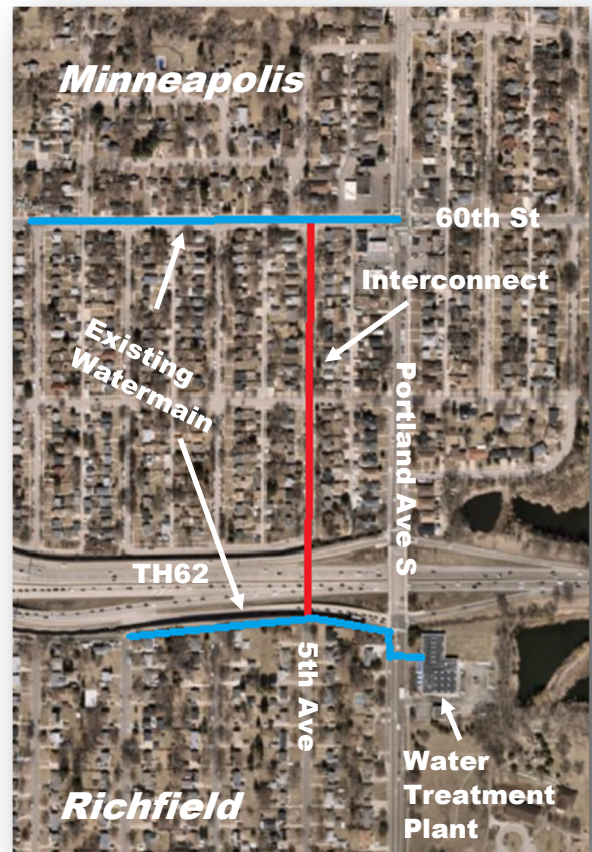
The **Richfield Emergency Water Interconnect** is a drinking water infrastructure project that will hydraulically connect the drinking water systems of Richfield and Minneapolis. The project involves the installation of an 18-inch water supply line from Minneapolis' transmission watermain to an interconnection point with Richfield's distribution system. The project's funding package, construction, and ownership will rest with the City of Richfield.

## Project Benefits

- **Strengthens** the City's critical infrastructure;
- **Establishes** drinking water and storage redundancy;
- **Ensures** a clean reliable secondary source of potable water for residents and businesses in Richfield in the event of any measurable changes to the water quality from existing groundwater source water;
- **Provides** an alternate water source for Richfield in the event of planned or unplanned water treatment plant outages or cyber attacks on the water system;
- **Creates** opportunities for Richfield to take action on other critical water system improvement projects that are not possible without a secondary source of water; and
- **Satisfies** EPA Safe Drinking Water Regulations for Emergency Preparedness.

## Project Rationale

MDH and MnDNR have consistently sent the message that public water utilities make the investment in a water system interconnect and explore viable source water alternatives to improve infrastructure resiliency. Since 2009, Richfield has been exploring alternatives for an emergency backup for the water distribution system. In 2023, a study was commissioned to ascertain which neighboring municipality could provide the requisite water supply to satisfy Richfield's demand. Interconnections with Edina, Bloomington, and Minneapolis were evaluated. The results of that study revealed that the most favorable connection is with Minneapolis because their system is adjacent to the Richfield Water Treatment Plant and has enough capacity to satisfy the current and future demands of the residents and business owners of Richfield.



**Est. Project Cost: \$5,000,000**

**2026 Capital Request: \$2,500,000**

**Construction year: 2027**

**Questions:**

**Kristin Asher, Public Works Director  
612-861-9795 or [kasher@richfieldmn.gov](mailto:kasher@richfieldmn.gov)**