

LEGACY FUND RESERVE CALCULATIONS
(November 2023 Forecast)

Outdoor Heritage Fund				
	<i>November 2023 Forecast</i>		<i>November 2023 Forecast</i>	
	FY 2024	FY 2025	FY 2026	FY 2027
Balance Forward	160,320	36,968	188,302	345,852
tax receipts	146,835	151,614	157,337	163,226
Investment Income	8,636	375	213	159
Total Resources	315,791	188,957	345,852	509,237
Expenditures	278,823	655	-	-
Balance Before Reserve	36,968	188,302	345,852	509,237
5% Reserve	7,342	7,581	7,867	8,161
Amount Available to Appropriate with 5% Reserve	29,626	180,721	337,985	501,076

Arts and Cultural Heritage Fund				
	<i>November 2023 Forecast</i>		<i>November 2023 Forecast</i>	
	FY 2024	FY 2025	FY 2026	FY 2027
Balance Forward	44,360	12,536	15,572	109,905
tax receipts	87,879	90,739	94,164	97,688
Investment Income	1,856	1,225	169	99
Total Resources	134,095	104,500	109,905	207,692
Expenditures	121,559	88,928	-	-
Balance Before Reserve	12,536	15,572	109,905	207,692
5% Reserve	4,394	4,537	4,708	4,884
Amount Available to Appropriate with 5% Reserve	8,142	11,035	105,197	202,808

Clean Water Fund				
	<i>November 2023 Forecast</i>		<i>November 2023 Forecast</i>	
	FY 2024	FY 2025	FY 2026	FY 2027
Balance Forward	123,138	32,479	25,637	183,231
tax receipts	146,835	151,614	157,337	163,226
Investment Income	4,842	1,043	257	174
Total Resources	274,815	185,136	183,231	346,631
Expenditures	242,336	159,499	-	-
Balance Before Reserve	32,479	25,637	183,231	346,631
5% Reserve	7,342	7,581	7,867	8,161
Amount Available to Appropriate with 5% Reserve	25,137	18,056	175,364	338,470

Parks and Trails Fund				
	<i>November 2023 Forecast</i>		<i>November 2023 Forecast</i>	
	FY 2024	FY 2025	FY 2026	FY 2027
Balance Forward	46,659	8,111	9,434	77,479
tax receipts	63,406	65,470	67,941	70,484
Investment Income	1,735	308	104	70
Total Resources	111,800	73,889	77,479	148,033
Expenditures	103,689	64,455	-	-
Balance Before Reserve	8,111	9,434	77,479	148,033
5% Reserve	3,170	3,274	3,397	3,524
Amount Available to Appropriate with 5% Reserve	4,941	6,161	74,082	144,509

*5% reserve calculation is made using the tax receipts number

**all values in thousands of \$

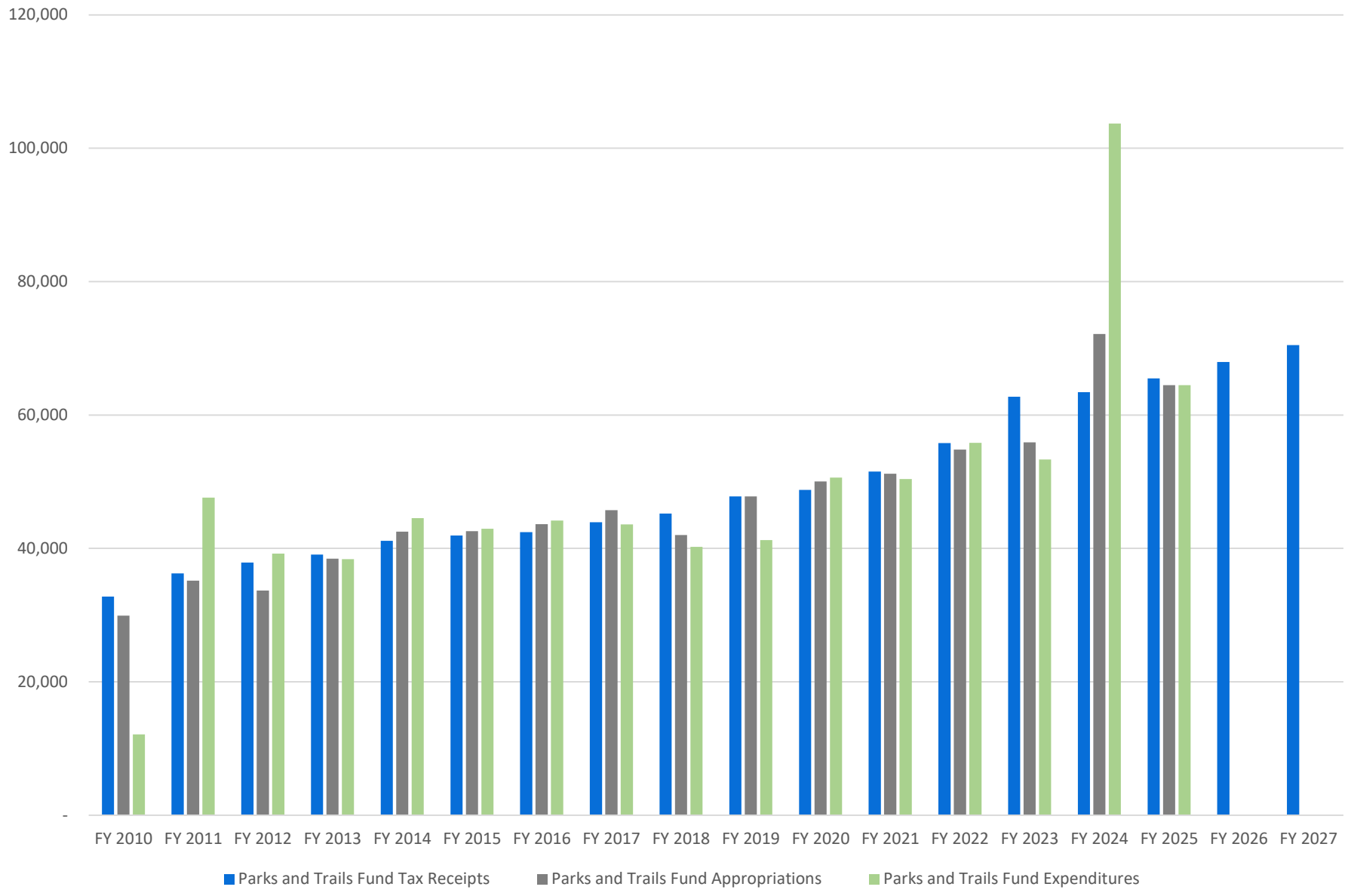
***FY 2025 "Amount Available to Appropriate with 5% Reserve" is the total amount available for the biennium

Legacy Funds: Historical Tax Receipts, Appropriations and Expenditures
 \$ in thousands

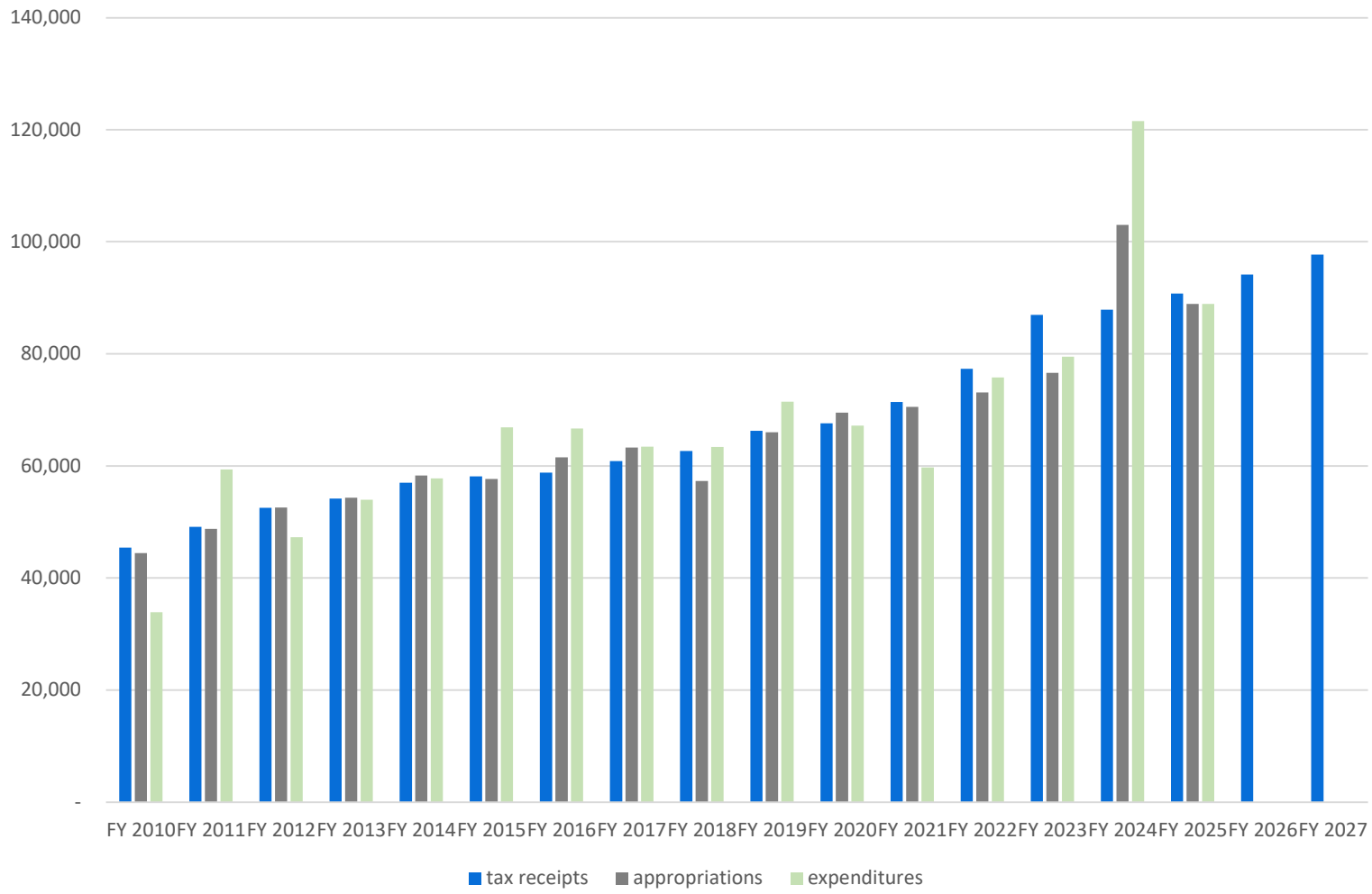
	FY 2010	FY 2011	FY 2012	FY 2013	FY 2014	FY 2015	FY 2016	FY 2017	FY 2018	FY 2019	FY 2020	FY 2021	FY 2022	FY 2023	FY 2024	FY 2025	FY 2026	FY 2027	
Outdoor Heritage	tax receipts	75,885	82,891	87,742	90,479	95,243	97,145	98,236	101,674	104,734	110,712	112,931	119,284	129,234	145,295	146,835	151,614	157,337	163,226
	appropriations	69,532	76,939	86,484	100,391	90,750	109,320	97,198	110,454	102,605	115,881	127,127	118,480	127,837	159,606	171,135	655		
	expenditures	55,138	72,528	61,101	83,756	119,254	133,423	108,678	91,962	101,352	116,110	141,508	119,376	113,134	148,964	278,823	655		
Clean Water	tax receipts	75,885	82,891	87,742	90,481	95,243	97,145	98,236	101,674	104,734	110,712	112,931	119,284	129,234	145,295	146,835	151,614	157,337	163,226
	appropriations	69,522	82,923	90,517	94,912	97,301	98,805	114,263	111,273	100,497	111,373	134,518	126,743	126,711	130,081	158,897	159,499		
	expenditures	45,477	74,909	65,428	87,832	84,290	107,114	108,999	133,395	107,038	121,313	133,327	147,604	131,993	134,439	242,336	159,499		
Parks and Trails	tax receipts	32,769	36,250	37,889	39,071	41,128	41,941	42,420	43,905	45,226	47,807	48,766	51,509	55,806	62,741	63,406	65,470	67,941	70,484
	appropriations	29,917	35,180	33,676	38,468	42,509	42,596	43,628	45,722	41,989	47,775	50,052	51,205	54,797	55,884	72,155	64,455		
	expenditures	12,137	47,598	39,224	38,375	44,542	42,943	44,181	43,595	40,227	41,259	50,621	50,393	55,825	53,327	103,689	64,455		
Arts & Cultural Heritage	tax receipts	45,416	49,152	52,512	54,151	57,001	58,128	58,790	60,850	62,682	66,259	67,588	71,390	77,345	86,957	87,879	90,739	94,164	97,688
	appropriations	44,470	48,750	52,600	54,329	58,309	57,659	61,542	63,262	57,328	66,036	69,504	70,518	73,132	76,617	103,024	88,928		
	expenditures	33,889	59,364	47,303	53,945	57,802	66,861	66,691	63,433	63,386	71,482	67,193	59,713	75,795	79,513	121,559	88,928		

*all values in thousands of \$

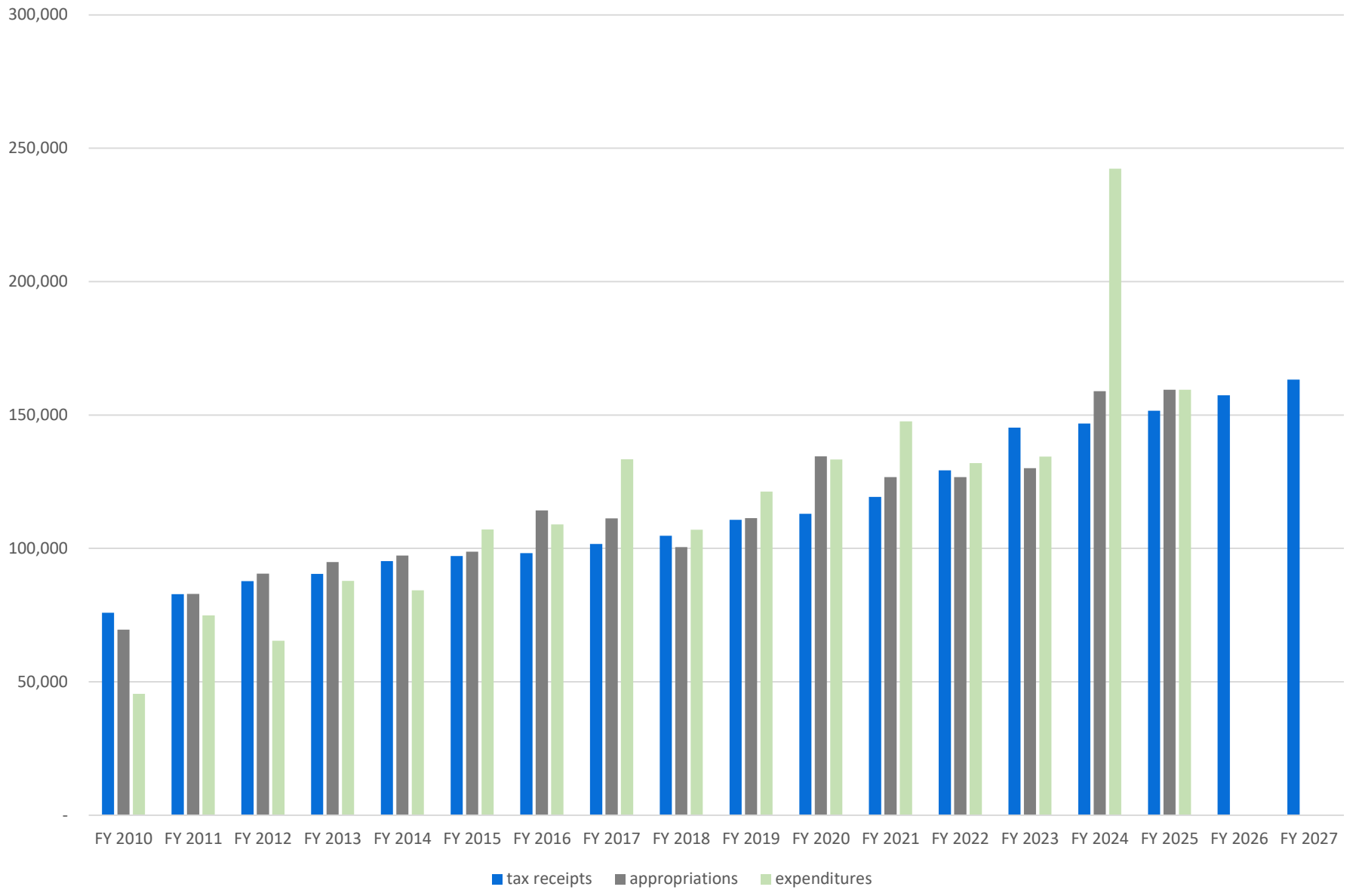
Parks and Trails Fund: Historical Funding \$ in thousands



Arts & Cultural Heritage Fund: Historical Funding \$ in thousands



Clean Water Fund: Historical Funding \$ in thousands



Outdoor Heritage Fund: Historical Funding \$ in thousands

