



EXPANDING THE SAFETY AND WELLBEING OF MINNESOTA'S CHILDREN



15,000+ children served

Who is CornerHouse?

CornerHouse is a nationally-accredited Children's Advocacy Center with a 34 year history of creating and training on evidence-based practices. We are a successful example of partnering with child protection, county agencies, and law enforcement to provide a collaborative response for children who disclose abuse. CornerHouse is a trauma-informed center focused on identifying, intervening, and interrupting violence. We focus on improving safety, supporting families, reducing trauma, and increasing wellbeing.

With more than 30,000 of Minnesota's children connected to a child maltreatment report, nearly 10% of all children self-reporting sexual abuse, and alarming rates of anxiety, depression, self-harm, and suicidality, it is critical that we create a space that can see more children to offer child abuse response, trauma screenings, advocacy, mental health services and safety training. For nearly 35 years, CornerHouse has been a local expert providing those services for children in Hennepin County and for families across the state partnering with 26 police departments, the University of Minnesota Masonic Children's Hospital, child protection departments across the Twin Cities area, county attorney's offices, the FBI, and area schools responding to the most serious or complicated cases of abuse.

The Project

CornerHouse has outgrown its current space and is struggling to respond to the number of children needing help. In just the first six weeks of 2023, requests for our services have grown by 58% and yet our site is unable to keep up with the demand simply because our space is unable to accommodate multiple families at a time. In completing pre-development for new space, our project team determined that we need a minimum 20,000 square feet of space to accommodate our services and more families, and our current space is less than 9,500. Our complicated IT footprint with forensic evidence and HIPAA compliance has struggled to function simply because we are tethered to the owners of our current space. As a statewide training center, we need to centralize training within our space to allow staff to flow between direct services and training and we need to have access to similar spaces for group therapy.

Your Support

CornerHouse requests \$2.75 million in cash funds for the acquisition of a new building Supporting the acquisition of a new campus provides:

- Services for more than 300 additional children every year
- Allows CornerHouse to provide in house group therapy for children and caregiver
- Establishes a statewide training center increasing the number of trainings provided and professionals training every year
- Allows us to expand our geographic reach
- Provides space for community-based space including prevention
- Creates multi-use space for training and group therapy



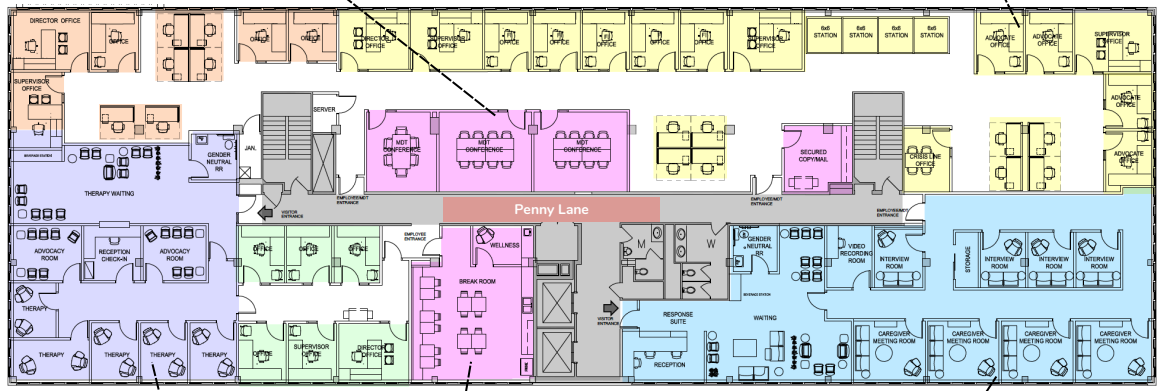
\$436

per child
over just 5 years

Multiple interviews can happen concurrently with increased MDT space

Visual Space Program

All advocates will have a confidential space to meet with caregivers

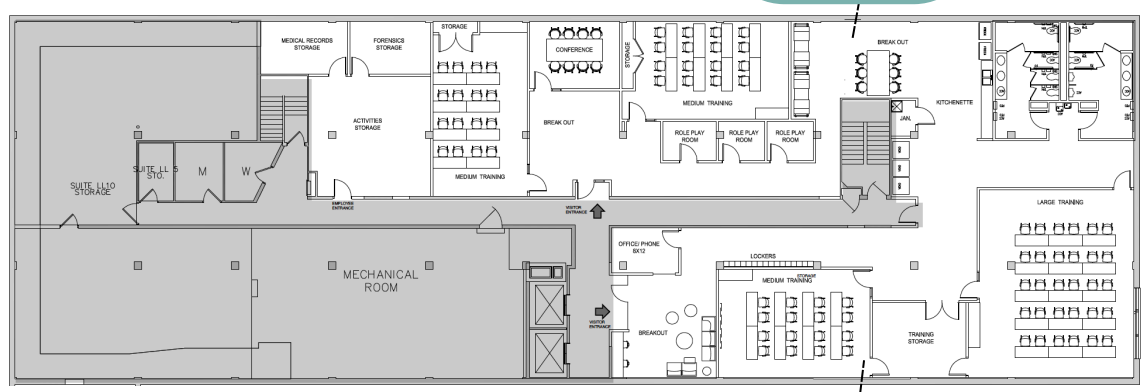


Increased therapy space allows families to begin treatment faster

Peaceful space for staff to rest and rejuvenate

Increased capacity for forensic interviews and caregiver support

Community prevention, forensic interview training, and support groups



Multi-purpose space - training by day & group therapy in the evening

Why fund CornerHouse?

Our comprehensive and nationally-accredited services are the solution to improve the wellbeing of children, help parents provide safer and more supportive homes, and prevent families from re-entering child protection. CornerHouse is recognized for developing a leading evidence-based protocols training in Minnesota, throughout the U.S. and abroad impacting the field.



Contact Us



Mitzi Hobot, MPA, MBA
 Executive Director
 651-403-0778
 mitzi@cornerhousemn.org

Michael Mollner
 Christopherson Advocates
 612-987-3297
 michael@christophersonadvocates.com