

# Metropolitan Council Inflow & Infiltration Mitigation Program

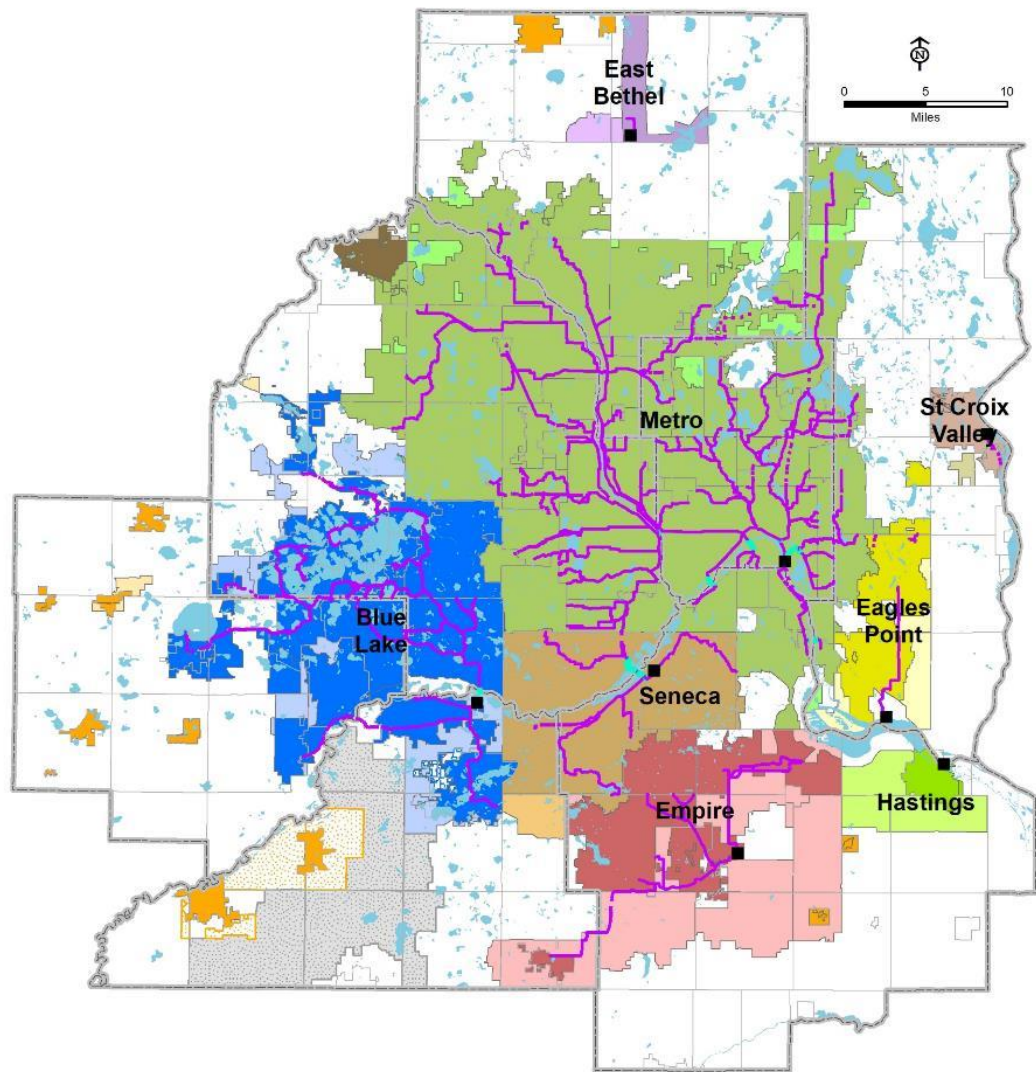


**Jeannine Clancy**  
Assistant General Manager, Wastewater Planning & Capital Project Delivery, Metropolitan Council Environmental Services

**Kyle Colvin**  
Manager, Wastewater Planning & Community Programs, Metropolitan Council Environmental Services



# MCES Wastewater System



Protects  
public health  
and safety



Protects  
the  
environment



Fosters the  
economic growth  
of the region

## WHO WE SERVE

7-county Twin Cities Metro Area

110 communities

2,700,000+ people

## OUR FACILITIES

9 wastewater treatment plants

640 miles of interceptors

250 million gallons per day (avg.)

## OUR ORGANIZATION

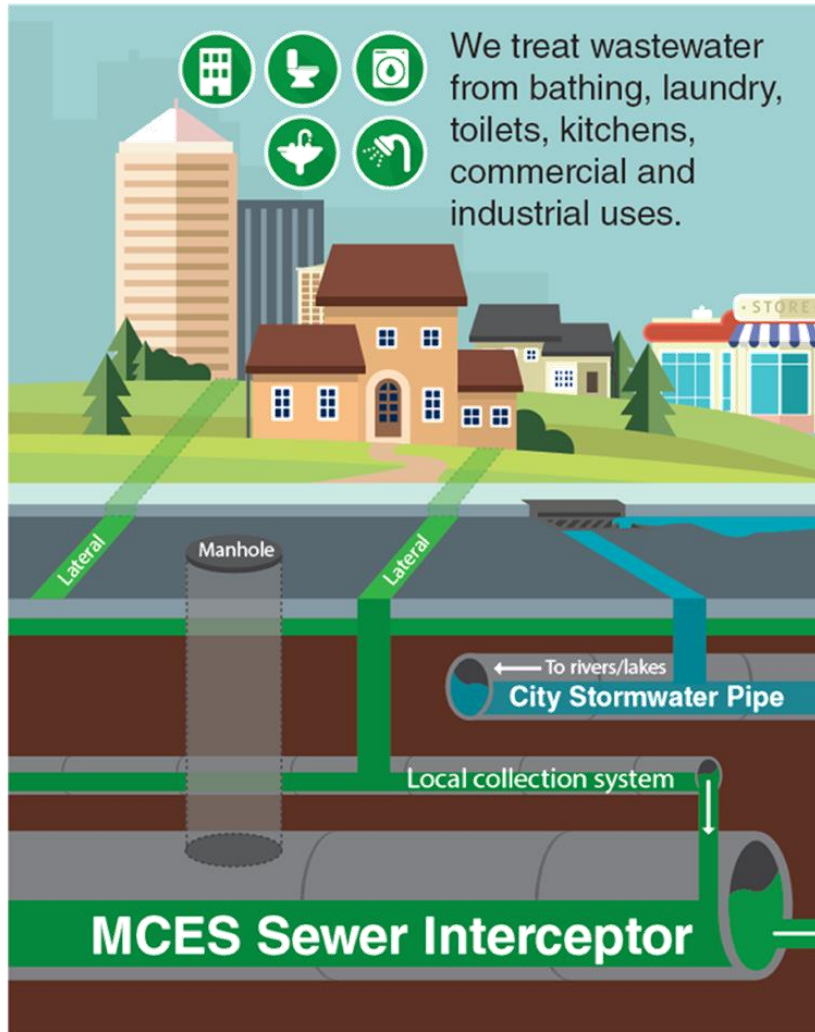
600+ employees

\$7 billion in valued assets

\$150 million / yr capital program

**MCES Serves ~50% of the State's Population**

# Regional and Local Wastewater Systems



Our treatment process removes pollutants by converting them to small volume of organic solids, and returns clean water to the environment.

To wastewater  
treatment  
plants

Wastewater  
Treatment  
Plant

River

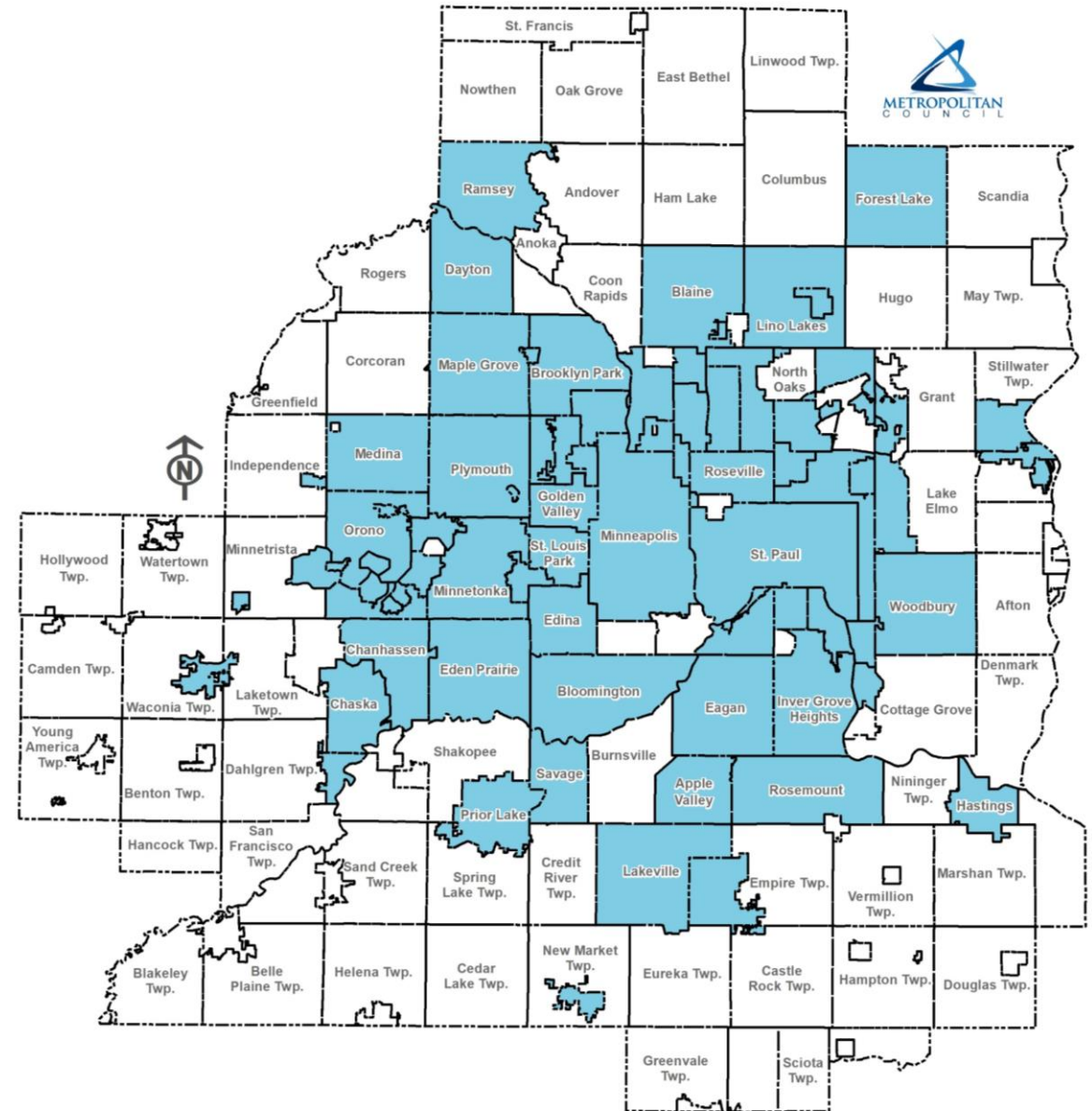
Communities Served are  
Customers and Partners  
in Protecting Public Health  
and the Environment



# Communities Impacted By I/I

## 81 Communities:

Apple Valley	Hopkins	Oakdale
Arden Hills	Inver Grove Heights	Orono
Bayport	Lakeville	Osseo
Birchwood	Lauderdale	Plymouth
Blaine	Lexington	Prior Lake
Bloomington	Lilydale	Ramsey
Brooklyn Center	Lino Lakes	Robbinsdale
Brooklyn Park	Little Canada	Rosemount
Carver	Long Lake	Roseville
Centerville	Mahtomedi	Savage
Chanhassen	Maple Grove	Shoreview
Chaska	Maple Plain	Shorewood
Columbia Heights	Maplewood	South St. Paul
Crystal	Medicine Lake	Spring Park
Dayton	Medina	St. Anthony
Deephaven	Mendota	St. Bonifacius
Eagan	Mendota Heights	St. Louis Park
Eden Prairie	Minneapolis	St. Paul
Edina	Minnetonka	St. Paul Park
Elko-New Market	Minnetonka Beach	Stillwater
Excelsior	Mound	Tonka Bay
Farmington	Mounds View	Vadnais Heights
Forest Lake	New Brighton	Waconia
Fridley	New Hope	Wayzata
Golden Valley	Newport	West St. Paul
Greenwood	North St. Paul	White Bear Township
Hastings	Oak Park Heights	Woodbury



# I/I Program Goals



**Protect Public Health** by avoiding backup of sewage into basements



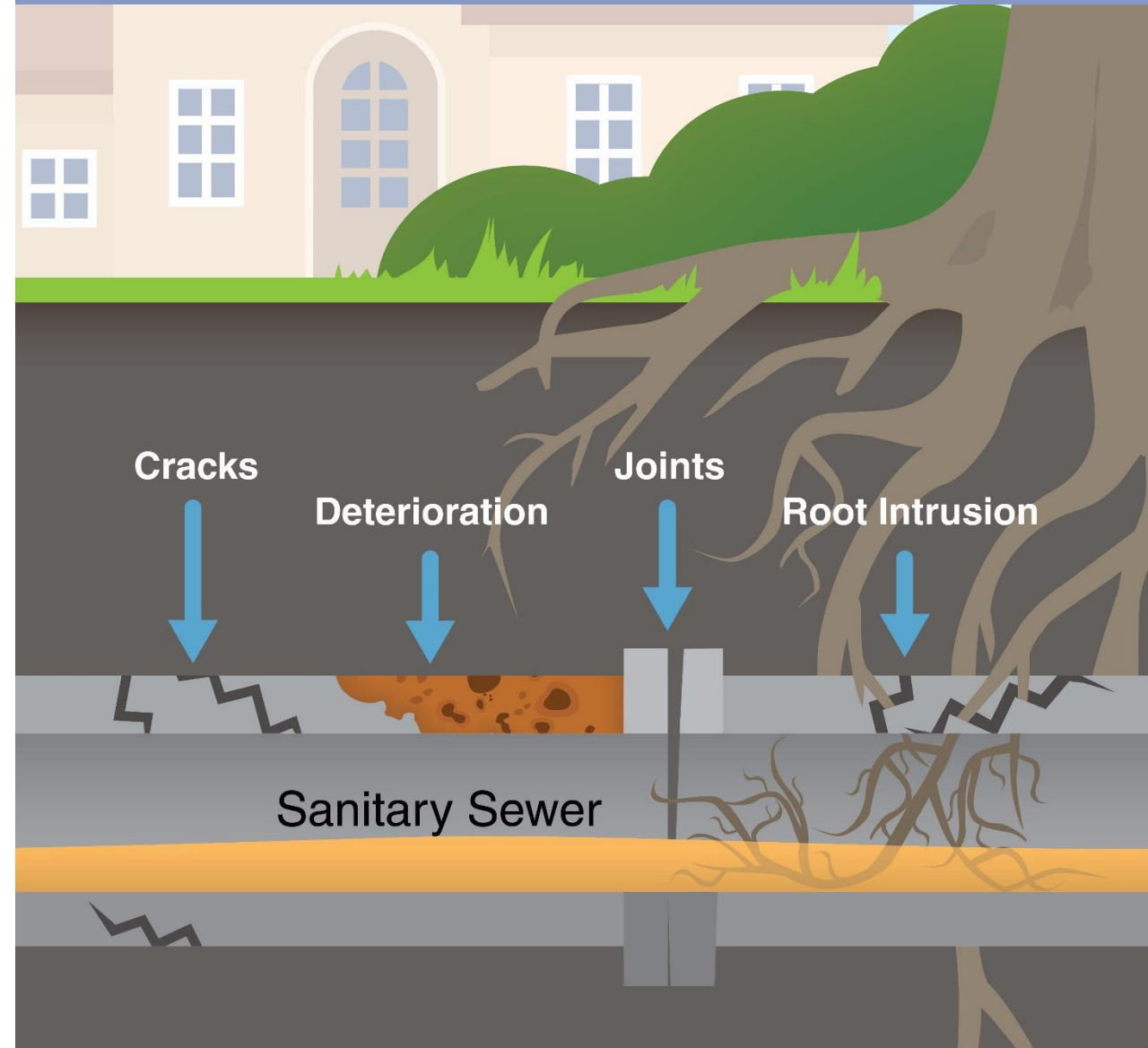
**Protect Water Quality** by avoiding spills to lakes and rivers



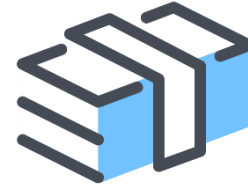
**Maintain Economic Efficiency** by avoiding unnecessary expansion of sewers and treatment plants

## Keep clear water out of the wastewater

Clear water – stormwater and groundwater – through I/I sources enters the wastewater systems. Excessive I/I increases the need to build larger and more expensive sewer pipes and treatment facilities.



# Local and Regional Investments to Reduce I/I



## 2004-2018:

Communities  
invest over \$160M  
in public local  
collection system  
to reduce I/I

## 2004-2018:

MCES invests over  
\$100M in  
interceptor system  
improvements to  
reduce I/I

## 2010-2020:

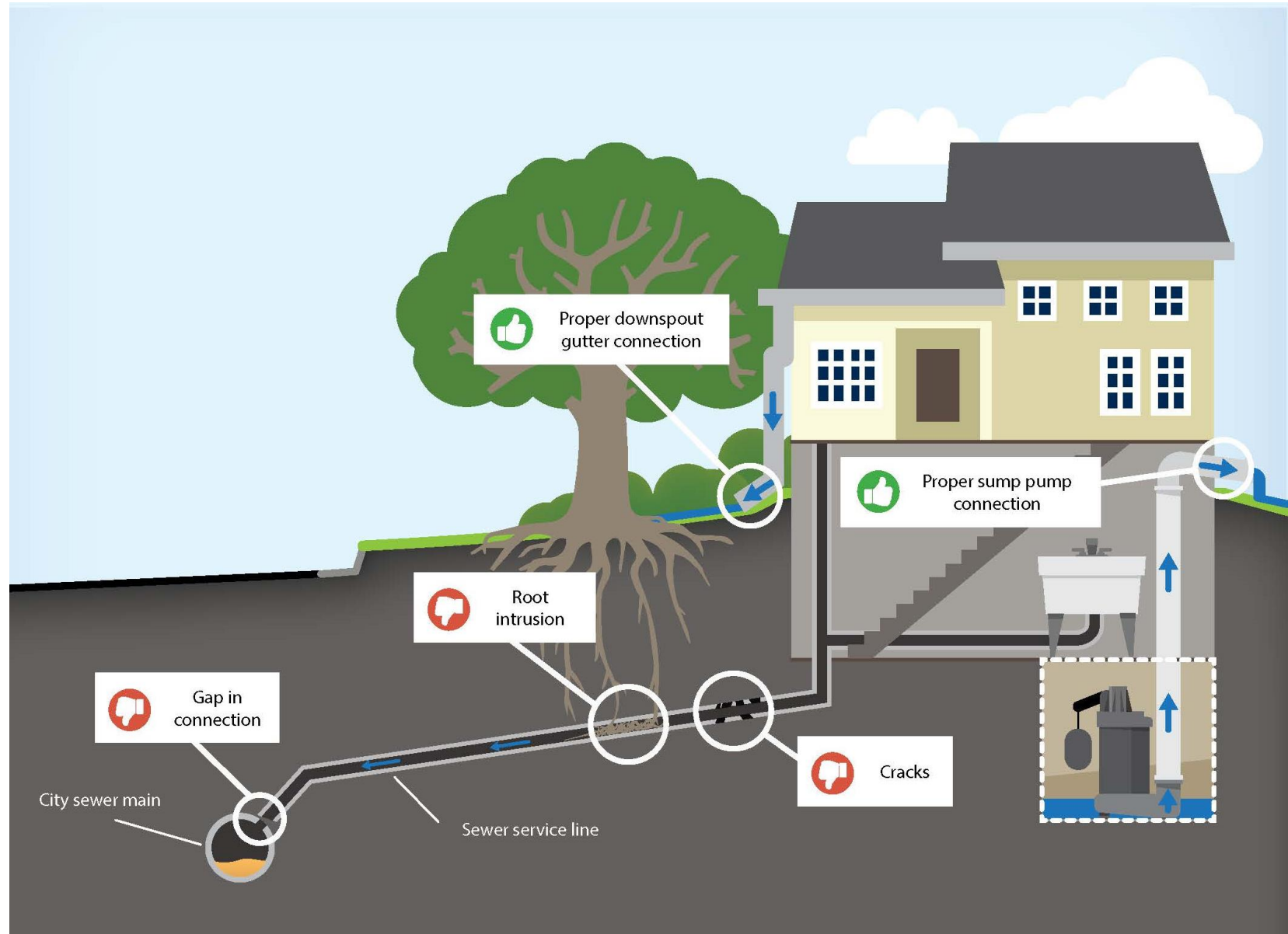
\$24.2M public  
infrastructure  
bonds for grants  
for I/I mitigation

## 2013:

\$1M Clean Water  
Legacy Funds for  
private property I/I  
mitigation

# Need for Private Property I/I Funding

- Met Council currently does not have authority to use its own revenues to assist cities with private property I/I programs.
- The average cost to repair or replace a private service lateral ranges between \$2,500 to \$7,000.
- State bond funds cannot be used for private property investigation nor improvements and multiple attempts to obtain State Clean Water Legacy funding was only successful once in 2013 resulting in an unreliable, and inconsistent funding source for property owners to investigate and repair private service laterals.



# Proposed Authorization

## MN 471.342 Inflow and Infiltration Program

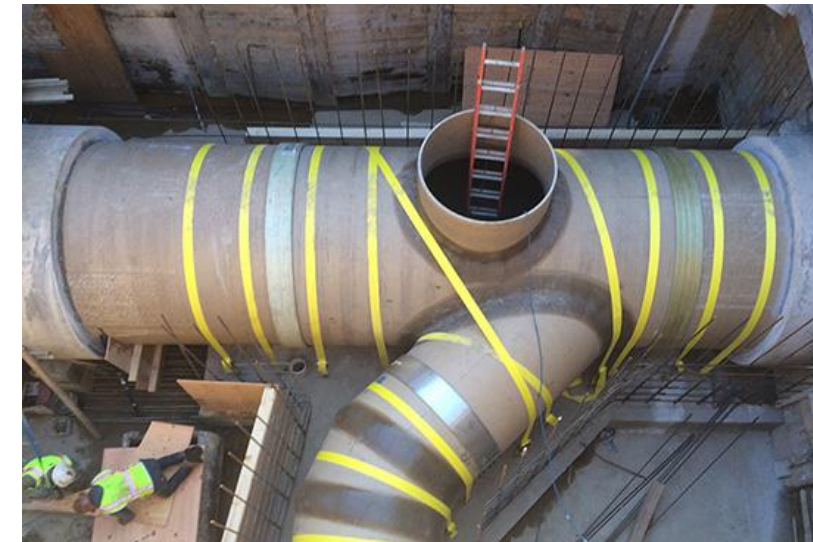
- Expand authorization to establish an I/I program that could assist homeowners with mitigation efforts.
  - In this section, “city” means a home rule charter or statutory city, **township, or any political subdivision of the state with statutory sewer ownership or operational responsibilities.**
- The Metropolitan Council program would be funded through a small portion of the Municipal Wastewater Charge (MWC). The MWC is a fee paid by wastewater system customers used to fund operations and maintenance.
  - Criteria and guidelines would be established with stakeholders through a public process.



# Inflow/Infiltration Program Results

## Key Results:

- Metropolitan Council has been able to **defer capacity improvements, estimated at \$1B**, that would have been required had I/I not been addressed
- Regional population has increased by 12% between 2005 and 2019 which has been accommodated within the existing regional collection system, despite increase in annual precipitation.
- Wastewater rates are competitive and are 40% below the national average.



**Key to public and environmental health, and wastewater affordability.**

# Questions

## **Jeannine Clancy**

Assistant General Manager,  
Wastewater Planning and Capital Project Delivery  
Jeannine.Clancy@metc.state.mn.us  
651-602-1210

## **Kyle Colvin**

Manager, Engineering Programs,  
Wastewater Planning and Capital Project Delivery  
Kyle.Colvin@metc.state.mn.us  
651-602-1151



**METROPOLITAN**  
C O U N C I L

**Thank you!**