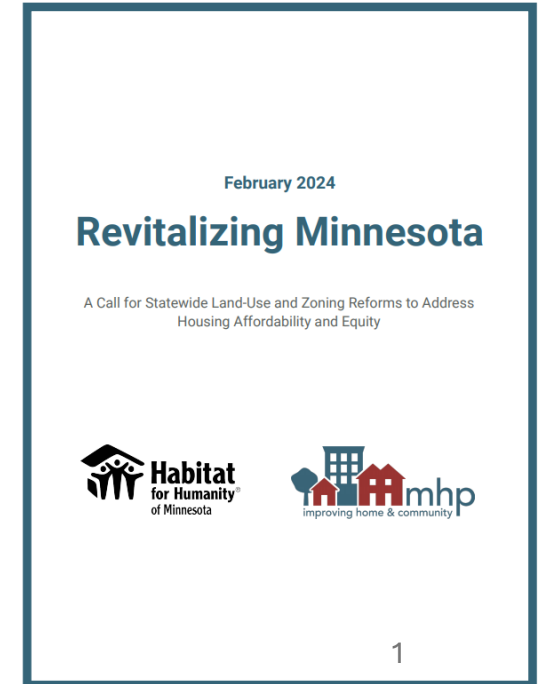


# Yes to Homes

## **Enable, Incentivize, and Expedite**

All types of homes, especially affordable,  
in every corner of the state



# Why Homes Matter – housing is the foundation

**Strong communities are built on stable homes.**

**Where you live  
affects nearly  
everything in  
your life.**

**MINNESOTA IS STRONGER  
WHEN EVERYONE CAN AFFORD  
A SAFE, STABLE HOME.**



# Our housing system is broken

For households with extremely low incomes, there are few homes to rent.

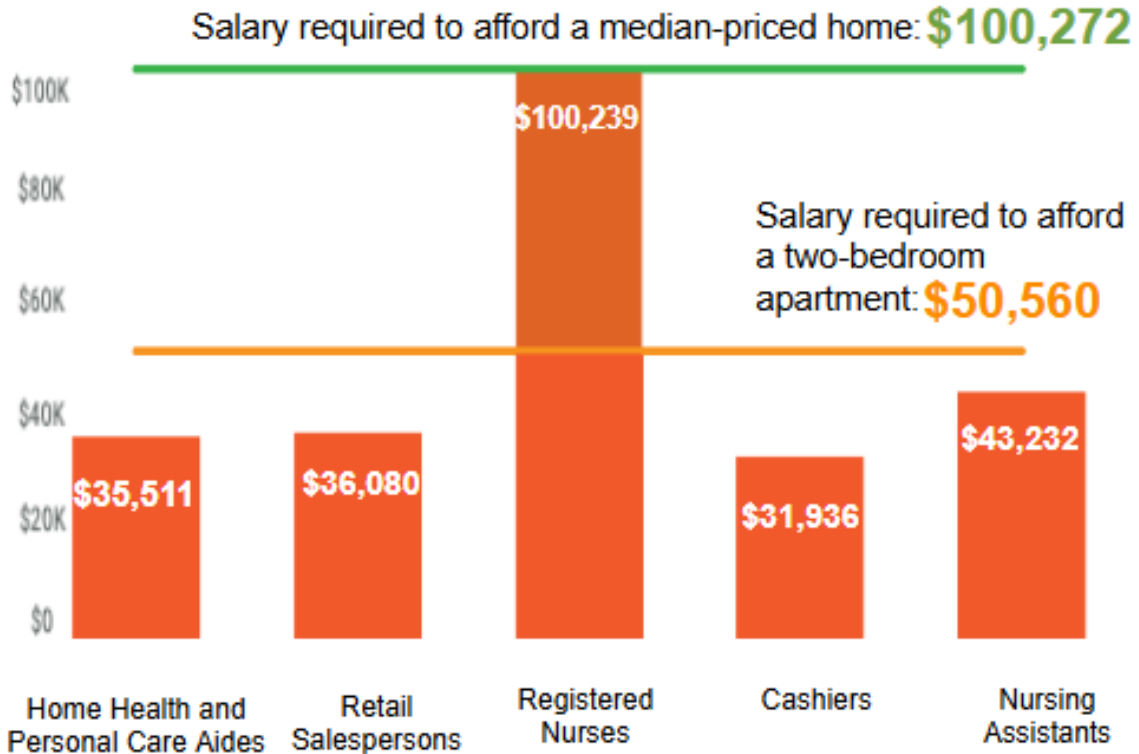
Minnesota ELI renter households: **173,025**  
Households without affordable/available homes **114,131**



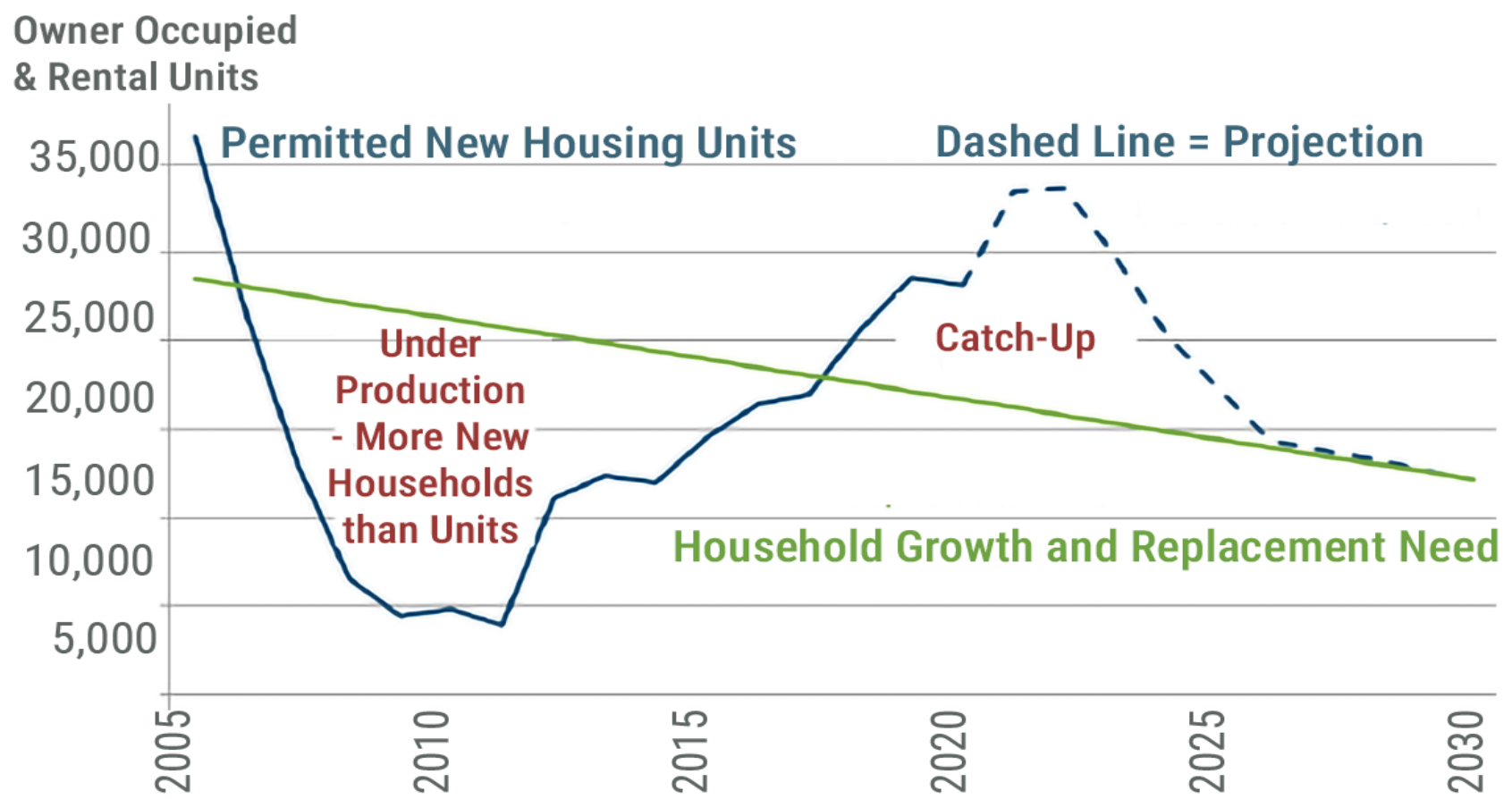
ELI stands for "Extremely Low-Income," or households earning under \$30,190 annually.



## Minnesota's In-Demand Jobs Don't Cover Housing Costs

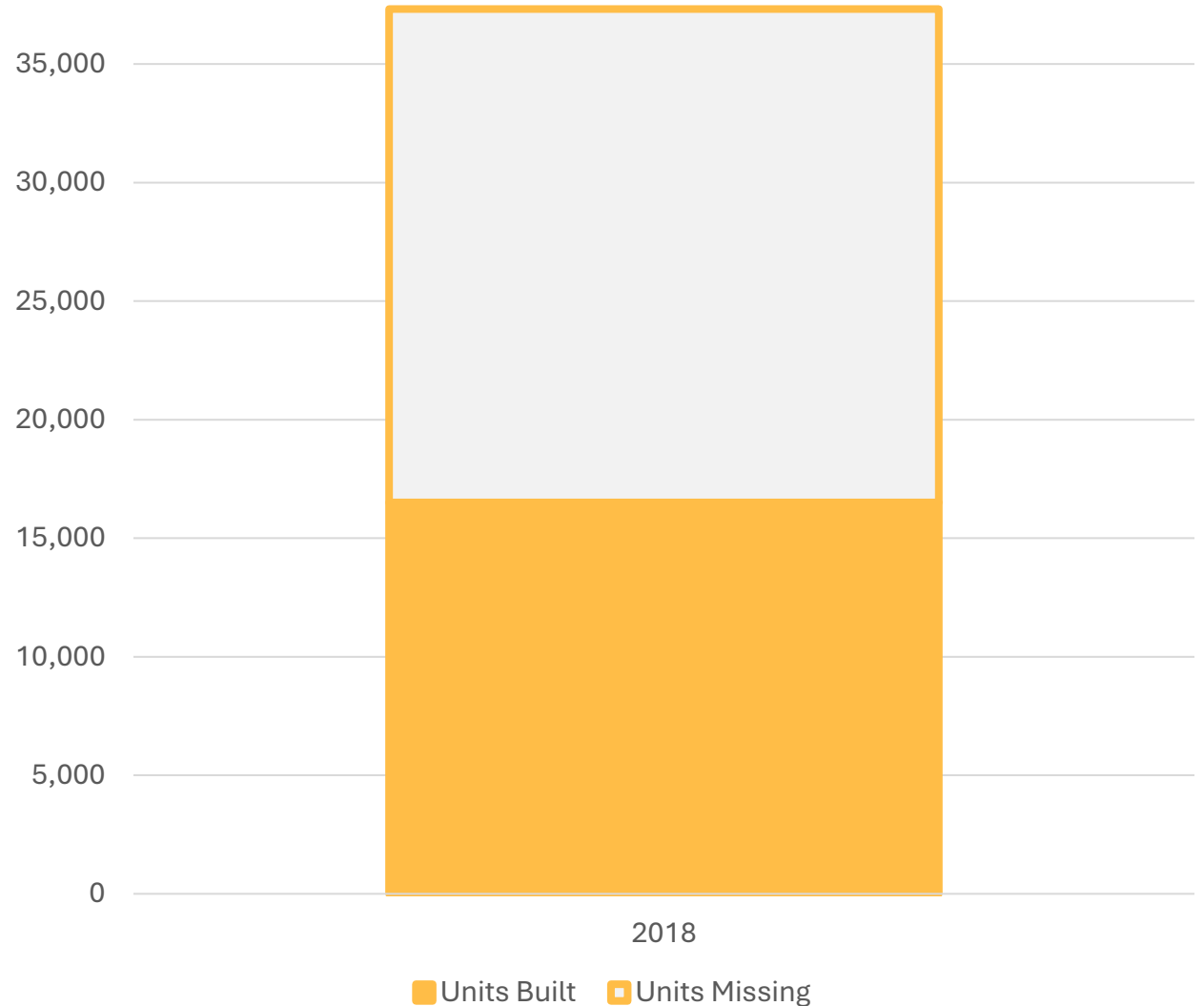


# New Production is Behind



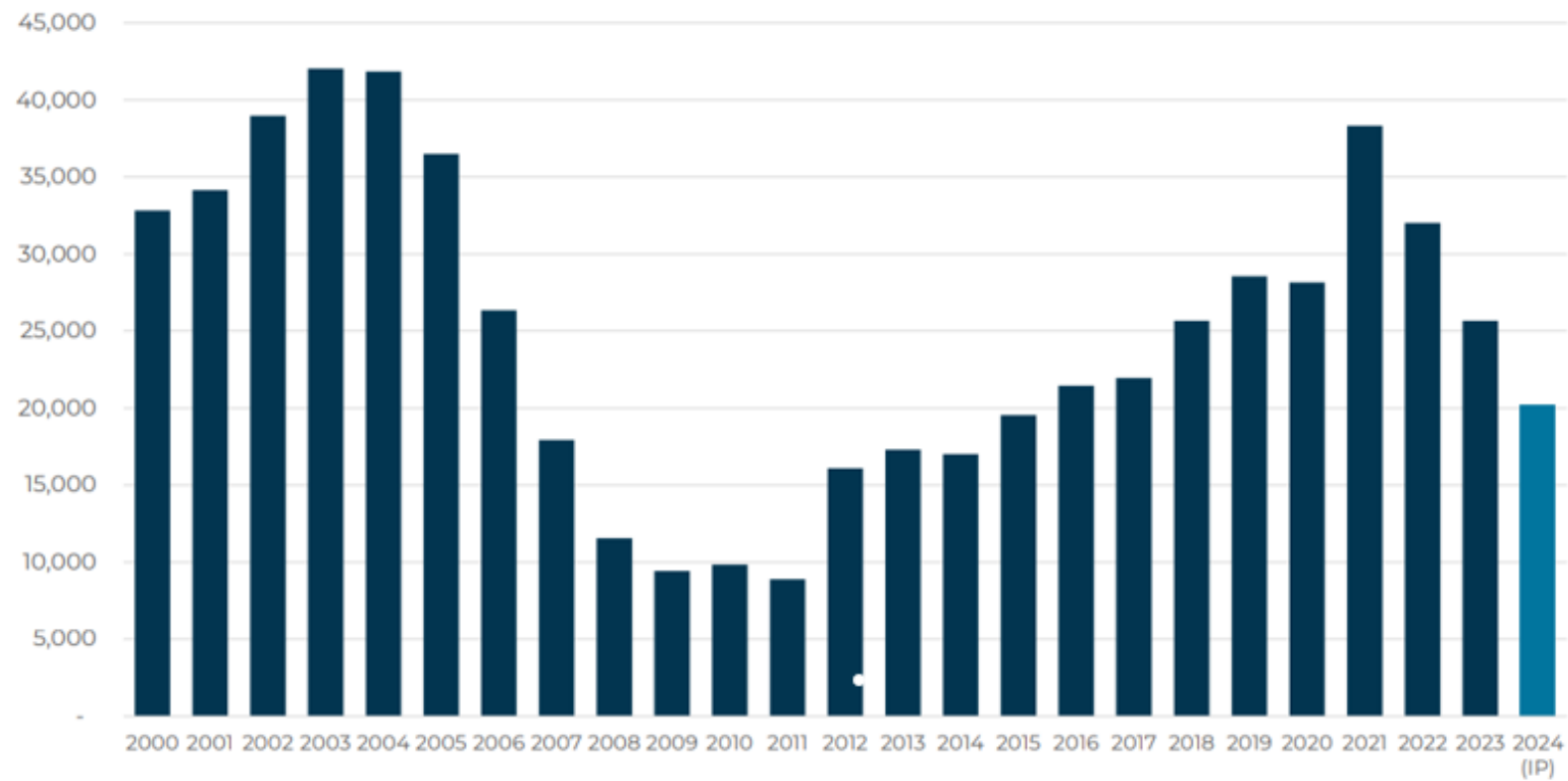
# Minnesota is NOT meeting these housing goals...

**In the past decade, the 7-county Twin Cities region met only 44% of its affordable housing goal.**



# New home starts are down

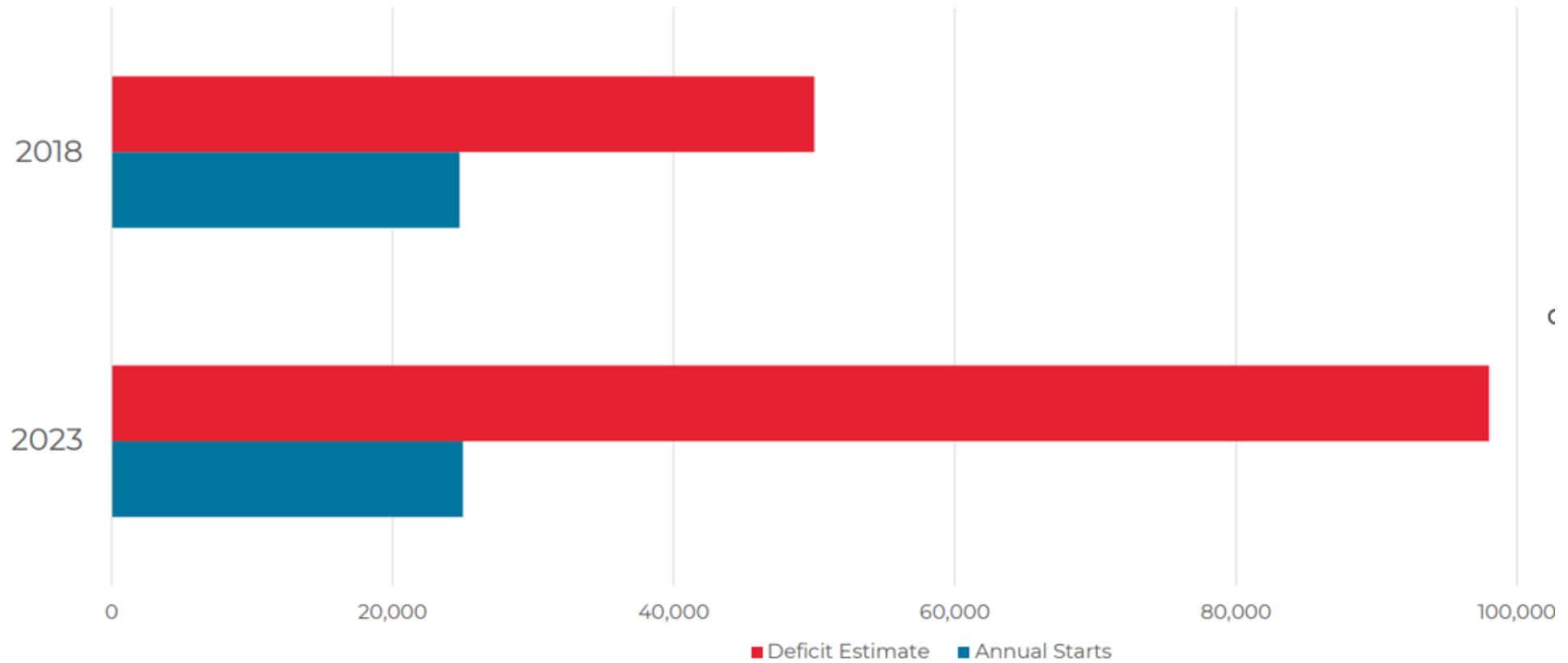
Minnesota New Housing Units



Source: US Census Bureau

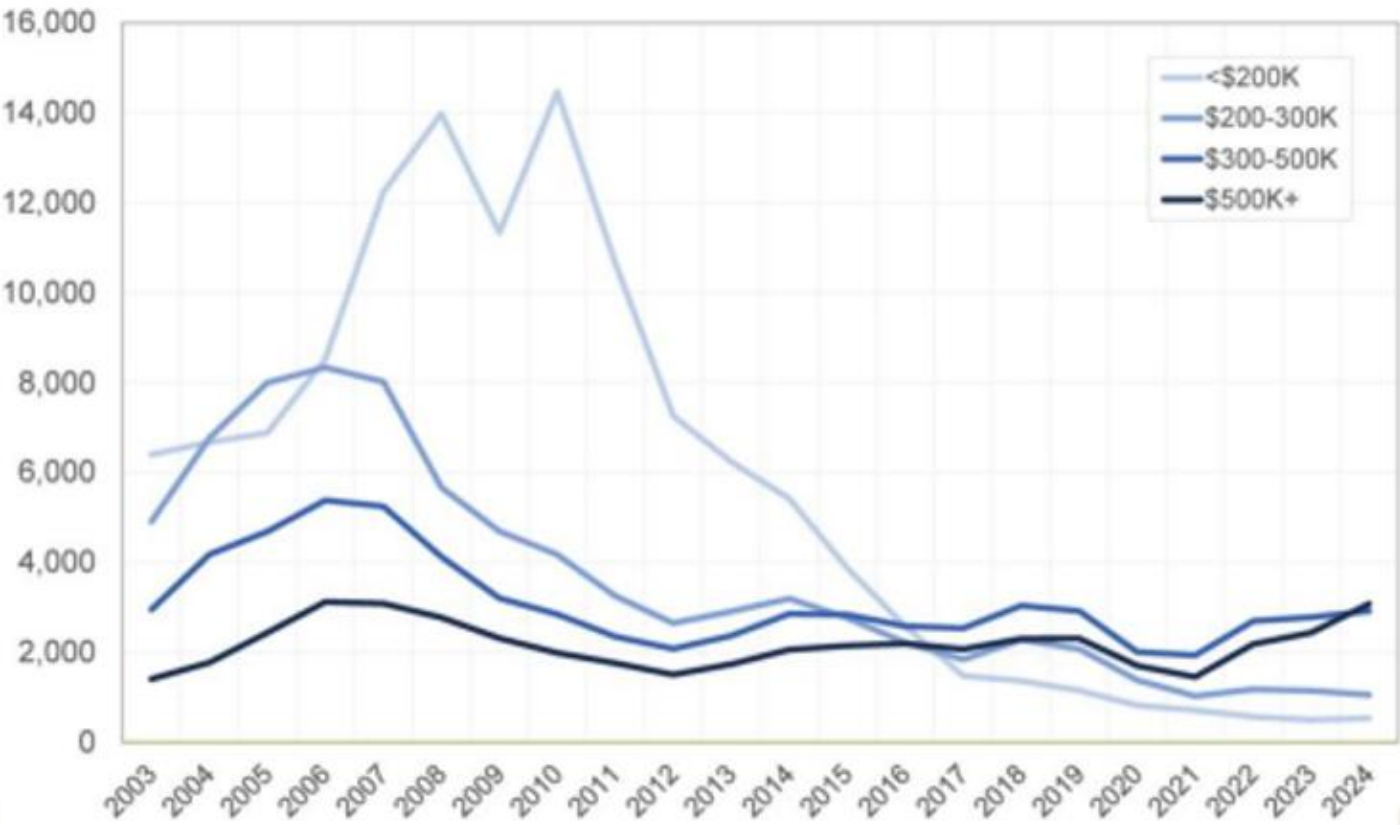
# The deficit is getting worse

## Minnesota's Growing Housing Deficit



# Home under \$200K are scarce

Inventory by Price Range  
Twin Cities

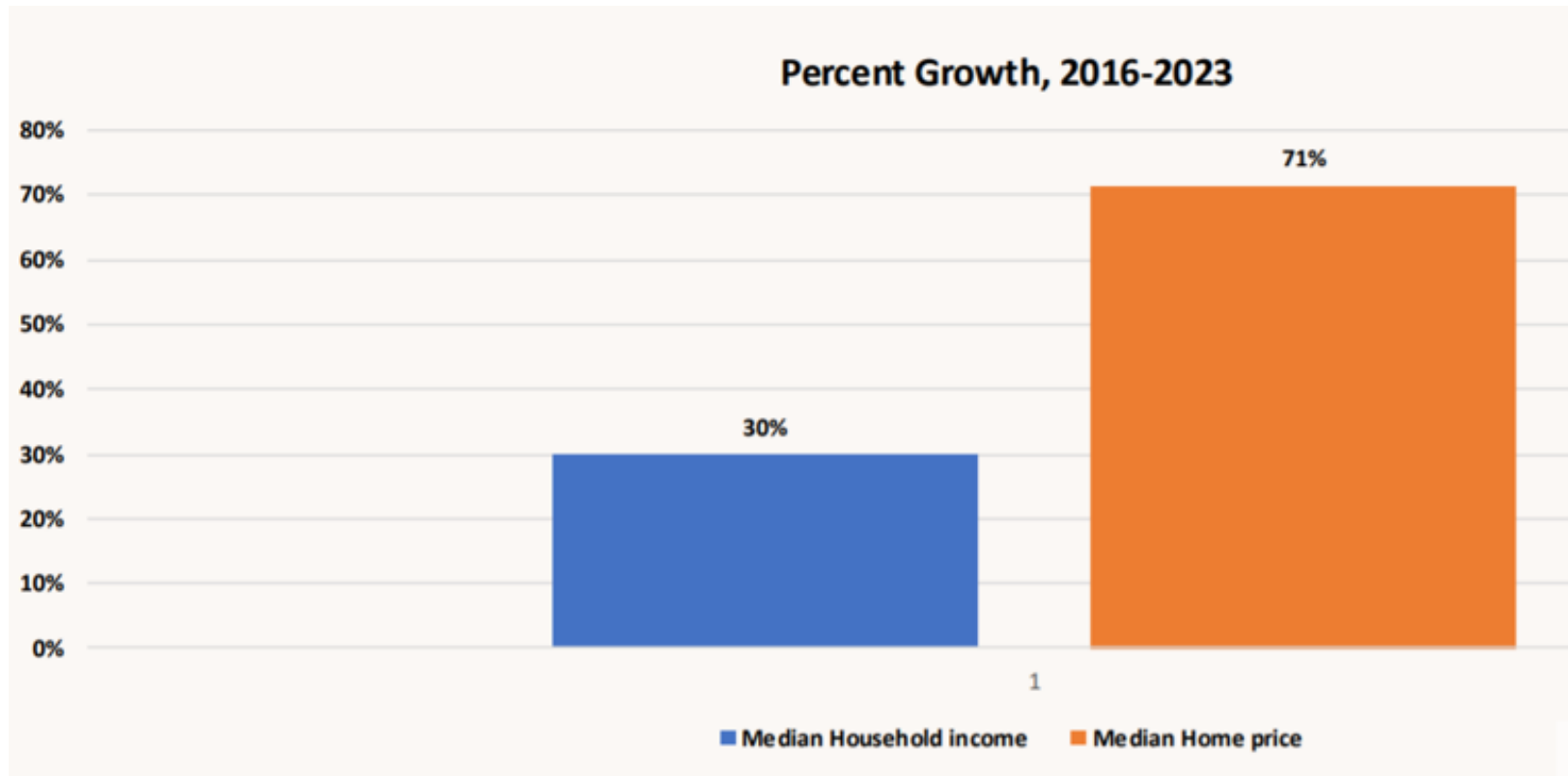


Source: MN Realtors



# Scarcity drives price growth

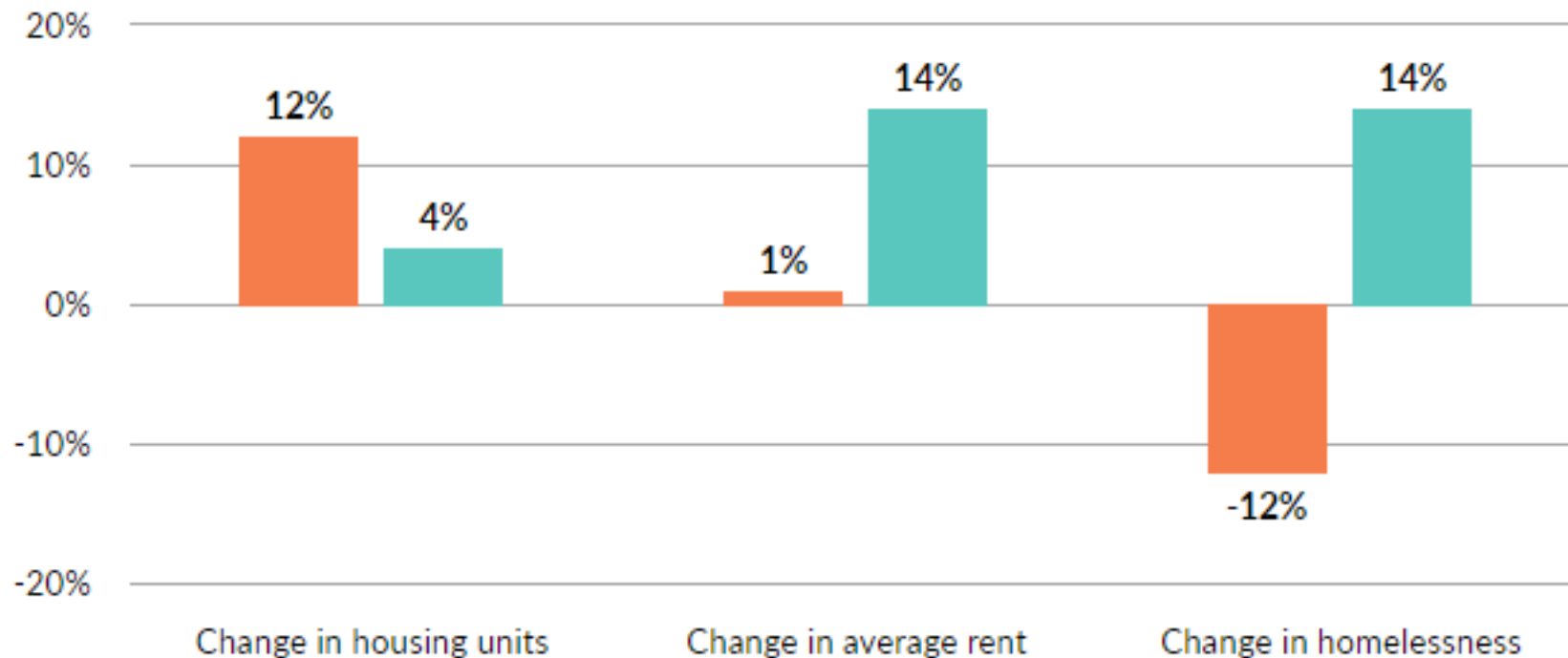
## MSP Home Price Growth



# The Solution – more homes of all kinds at all price points

## Minneapolis' Rent Growth Was Much Lower Than Minnesota's

Percentage change in housing stock, average rent, and homelessness, 2017-22



# Status quo – long-term consequences

Demand  
exceeds supply



Rents & home prices increase faster than  
incomes



Affordability gap gets wider



Cost burden increases

# Systemic impacts

- Limited economic mobility – zip code predicts outcomes
- Lost wages for workers
- Persistent disparities (wealth generation, education, health, and more)
- Poorer student performance
- Poorer health outcomes
- Higher carbon emissions
- Reduced GDP – workers can't recruit and retain skilled talent and workers can't relocate to higher paying jobs