

# Metropolitan Council

## Regional Parks System and Water Resources

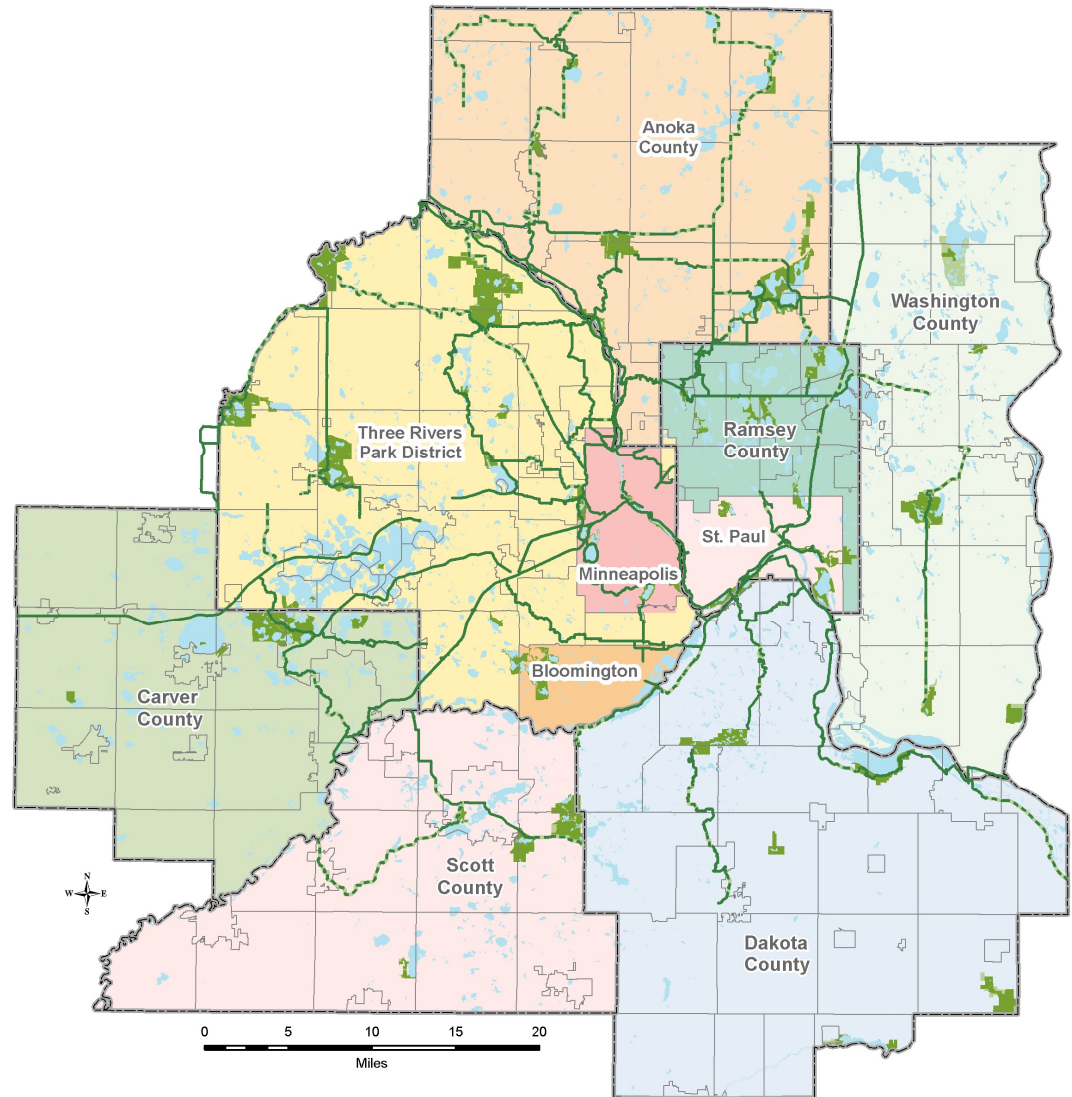


House Environment & Natural  
Resources Finance and Policy  
Committee

LisaBeth Barajas, Community Development Director, Metropolitan Council  
Leisa Thompson, General Manager, Metropolitan Council Environmental Services

# Regional Parks System

- Nearly 55,000 acres of park land
- 415 miles of regional trails
- Over 63 million visits in 2019



January 28, 2021

# Regional Parks Grant Programs

Program	<ul style="list-style-type: none"><li>• Funding Source</li><li>• Distribution Methodology</li></ul>
Operations & Maintenance	<ul style="list-style-type: none"><li>• State General Fund and Lottery in Lieu</li><li>• Formula</li></ul>
Parks & Trails Legacy	<ul style="list-style-type: none"><li>• State matched by Council funds</li><li>• Formula</li></ul>
Parks Acquisition	<ul style="list-style-type: none"><li>• State matched by Council funds</li><li>• Part Legacy, Part ENRTF</li><li>• 1st come, 1st served</li></ul>
Bonding	<ul style="list-style-type: none"><li>• State matched by Council funds</li><li>• Formula</li></ul>
Equity Grant Program	<ul style="list-style-type: none"><li>• Council funds</li><li>• Competitive</li></ul>

- 5 grant programs are funded by multiple state sources and Council funds
- Council passes through 100% of state funding to Park Implementing Agencies
- Current portfolio is over 160 grants valued at ~\$187M
- \$192M in grants are programmed in the current Council Authorized Capital Improvement Program (2021-2026)



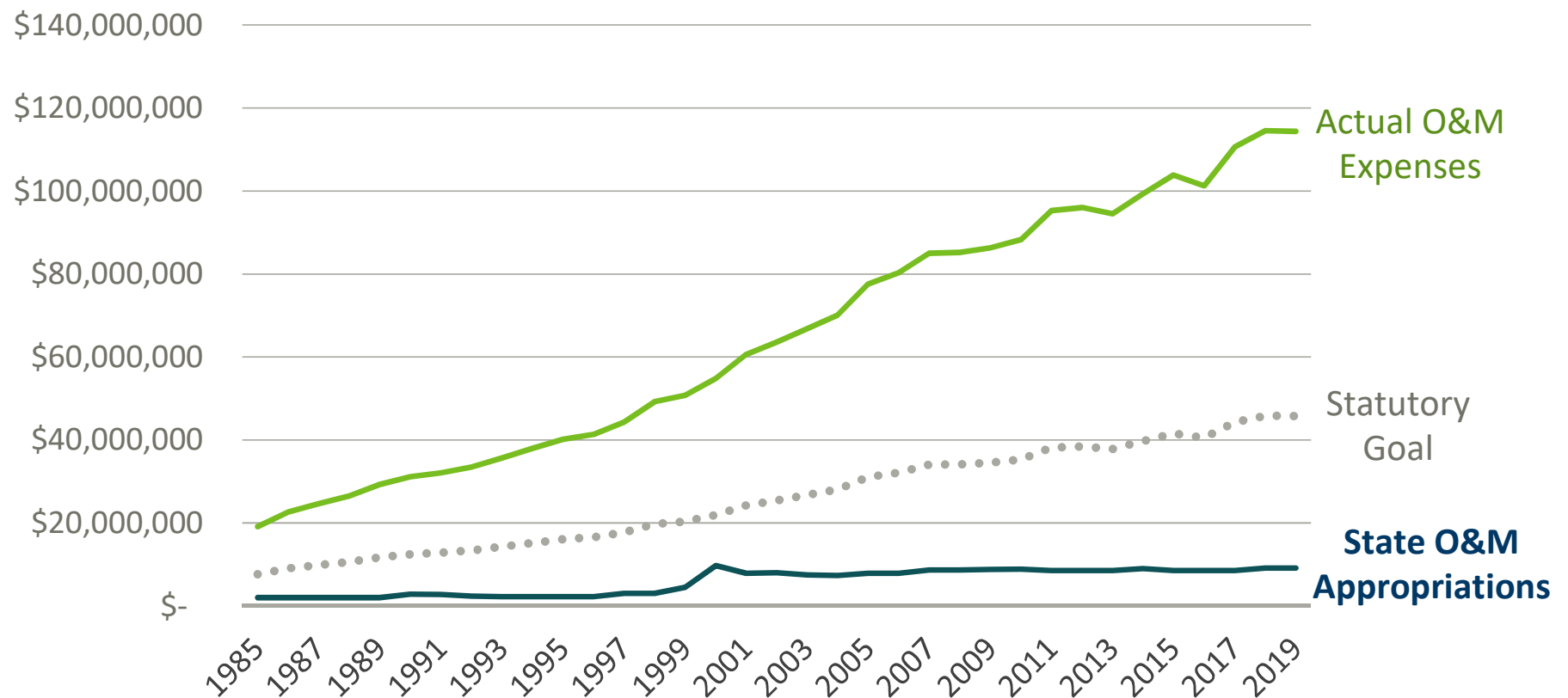
# Governor's Proposal

The Governor supports stable Operations and Maintenance funding for the Regional Parks System:

Fund	Annual Amount
General Fund	\$2.54 million
Lottery-in-Lieu of Taxes	\$6.60 million
<b>TOTAL</b>	<b>\$9.14 million</b>

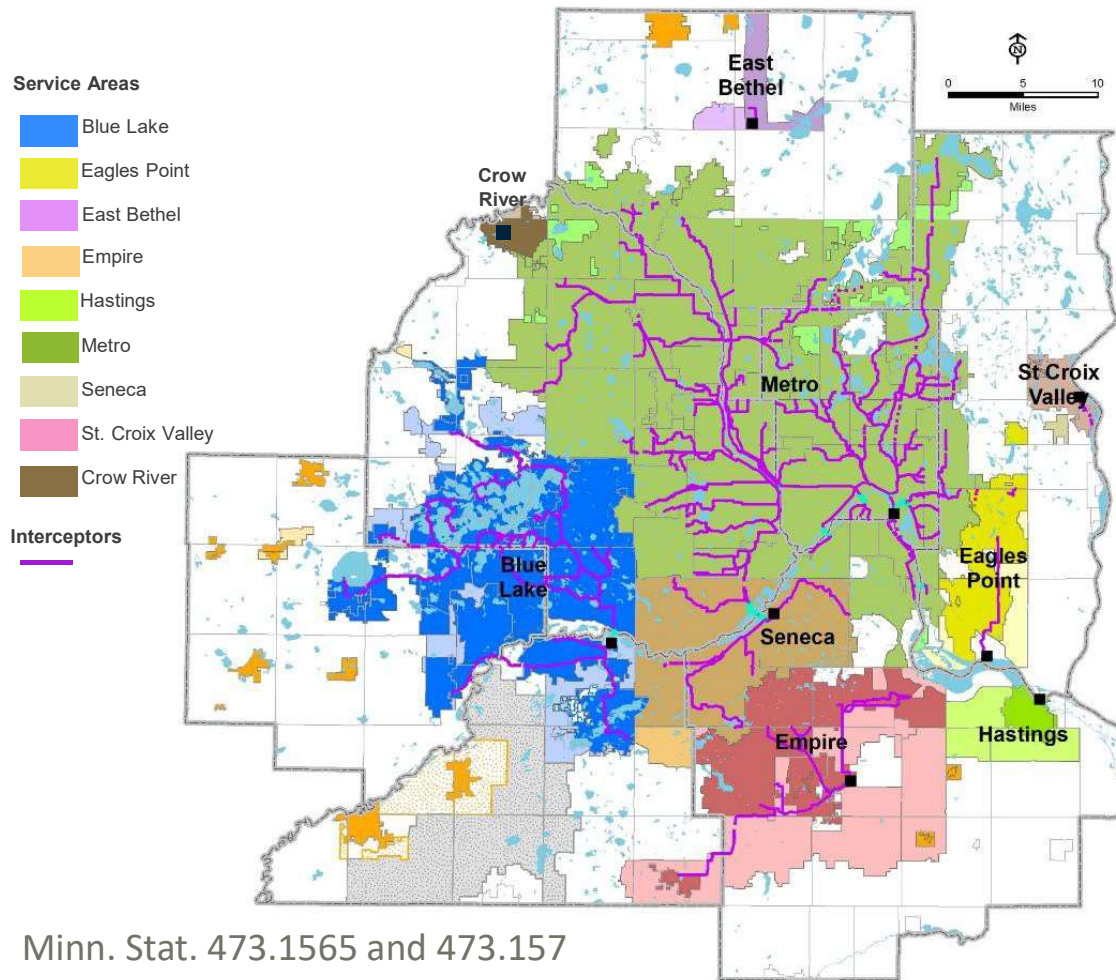


# State Appropriations have not kept up with Operations & Maintenance Costs



January 28, 2021

# Wastewater Service Area and Facilities



**We serve ~50% of  
Minnesota's population**

## WHO WE SERVE

7-county Twin Cities Metro Area  
110 communities  
3,000 square miles  
2,600,000+ people

## OUR FACILITIES

9 wastewater treatment plants  
610 miles of interceptors  
61 pump stations  
250 million gallons per day (avg)

## OUR ORGANIZATION

600+ employees  
\$7 billion in valued assets  
\$150 million per year capital program  
\$323 million annual budget

# Water Resources Planning and Programs

## Thrive MSP 2040



## Water Resources

Wastewater System Plan

Master Water Supply Plan



### Program

- Funding Source
- Distribution Methodology

### Water Demand Reduction Grants

- State – Clean Water Fund matched by Cities funds
- Formula

### Water Supply Sustainability

- State – Clean Water Fund
- Regional and Subregional priority Directive

### Water Monitoring

- River and stream monitoring funded by wastewater fees
- Lake monitoring - fees charged to participants
- Cooperative agreements – fee for service for some stream and river work

### Technical Assistance

- Regional assessments of water data collected
- Water planning assistance to watersheds and LGUs
- Research and guidance



# Questions?

