



Aitkin	Carlton	Cook	Itasca	Lake of the Woods
Becker	Cass	Crow Wing	Koochiching	Pine
Beltrami	Clearwater	Hubbard	Lake	St. Louis

Friday March 4th, 2022

SUBJECT: 2022 Minnesota Association of County Land Commissioners Legislative Priorities

As I'm sure you're aware, our organization represents fifteen northern Minnesota counties that collectively manage 2.7 million acres of land for the various resources the forest provides. During the September 29, 2021 Minnesota Association of County Land Commissioners (MACLC) meeting, the 2022 legislative priorities for our association were discussed. The priorities fall into three categories: leases, blighted properties, and conservation easements.

1. Leases: giving Counties greater flexibility in length and dollar limit for leases
2. Blighted Property: create or allow additional funding sources for blighted property remediation
3. Conservation Easements: allow Counties to put conservation easements on tax forfeited land for ecosystem services including carbon offsets and wetland banks

I, as chair, am willing to help testify for any of these items.

Sincerely,

Nate Eide
Chair of MACLC

Special Legislation - 2022

MAP PARCEL	LEGAL	TWP	RGE	SEC	COMMENTS
1 010-0230-03300	LOTS 23 THRU 30 INC PART OF VAC ALLEY ADJ, BAY VIEW ADDITION TO DULUTH NO 2	49	15	11	Private Sale - Stucture Encroachment
2 Part of 430-0010-02916	LOT 2 EX S 760 FT	62	20	18	Private Sale - Part of, Stucture Encroachment



St. Louis County Land & Minerals Department Tax Forfeited Land Sales - Special Legislation

Map 1

CITY OF DULUTH

PARCEL: 010-0230-03300

LEGAL: LOTS 23 THRU 30
INC PART OF VAC ALLEY
ADJ, BLOCK 54, BAY VIEW
ADDITION TO DULUTH NO 2



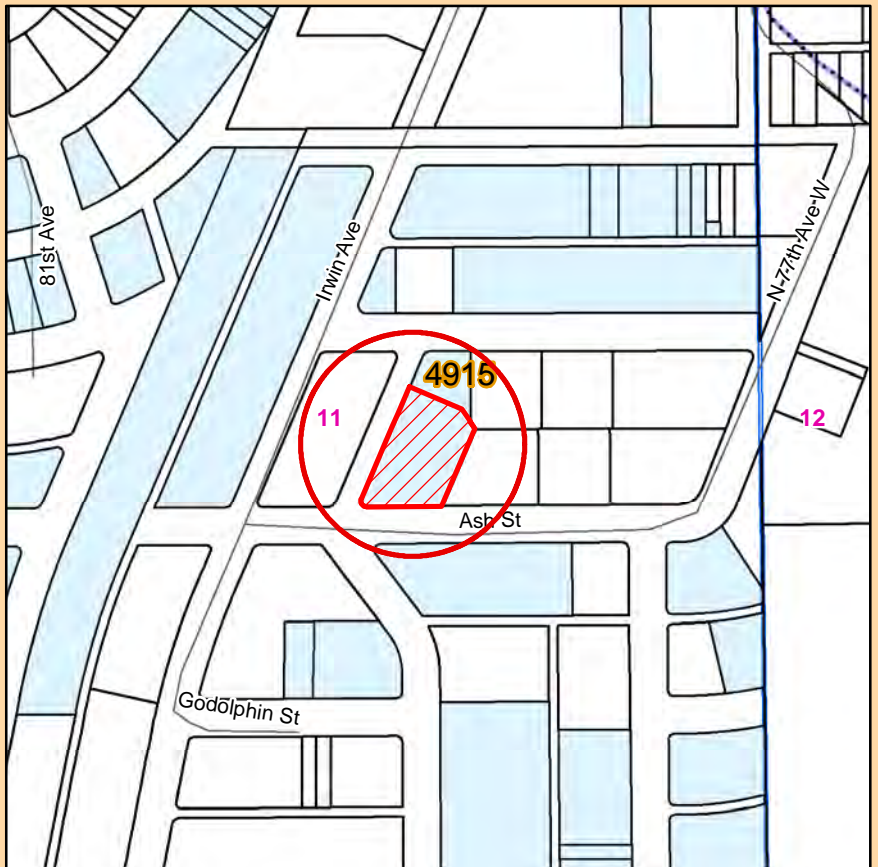
State Tax Forfeited Land
 Water
 Road
 Area of Interest
 Tract

St. Louis County, Minnesota

This drawing is neither a legally recorded map nor a survey and is not intended to be used as such. This drawing is a compilation of recorded information and data located in various city, county, state and federal offices. St. Louis County is not responsible for any incorrectness herein.

**St. Louis County
Land and Minerals Department**

2021





St. Louis County Land & Minerals Department Tax Forfeited Land Sales - Special Legislation

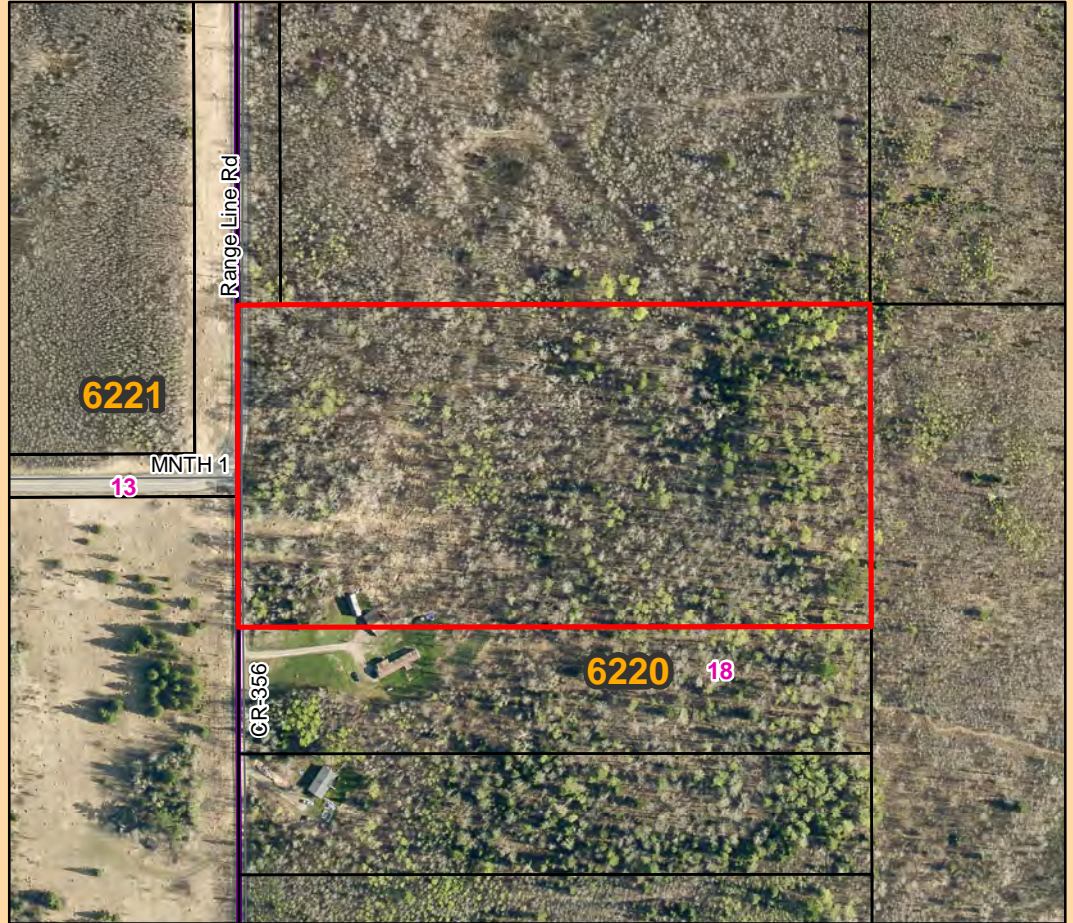
TOWN OF LINDEN GROVE

PARCEL: 430-0010-02916

LEGAL: LOT 2 EX S 760 FT,
Sec 18 Twp 62N Rge 20W

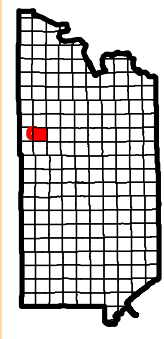
ADDRESS: 1796 Range Line
Rd, Cook, MN 55723

Part of, to resolve
encroachment and meet
setbacks.



Legend

- State Tax Forfeited Land
- Water
- Road
- Area of Interest
- Tract

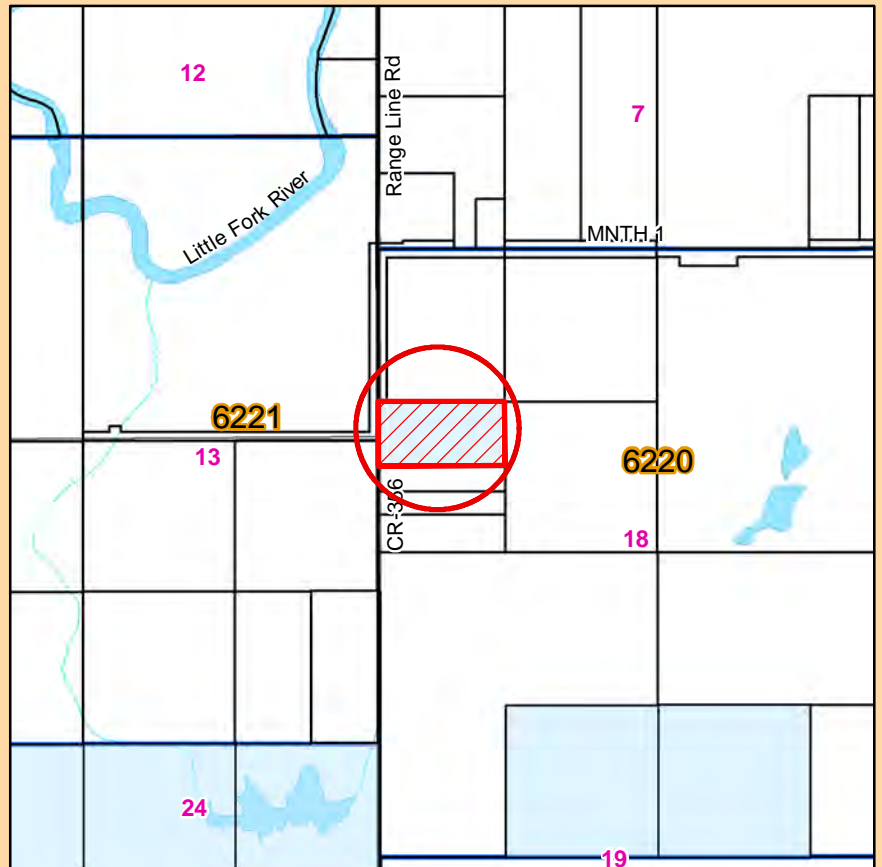


St. Louis County, Minnesota

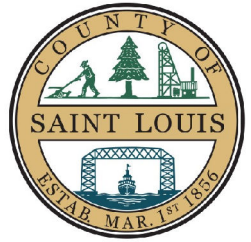
This drawing is neither a legally recorded map nor a survey and is not intended to be used as such. This drawing is a compilation of recorded information and data located in various city, county, state and federal offices. St. Louis County is not responsible for any incorrectness herein.

**St. Louis County
Land and Minerals Department**

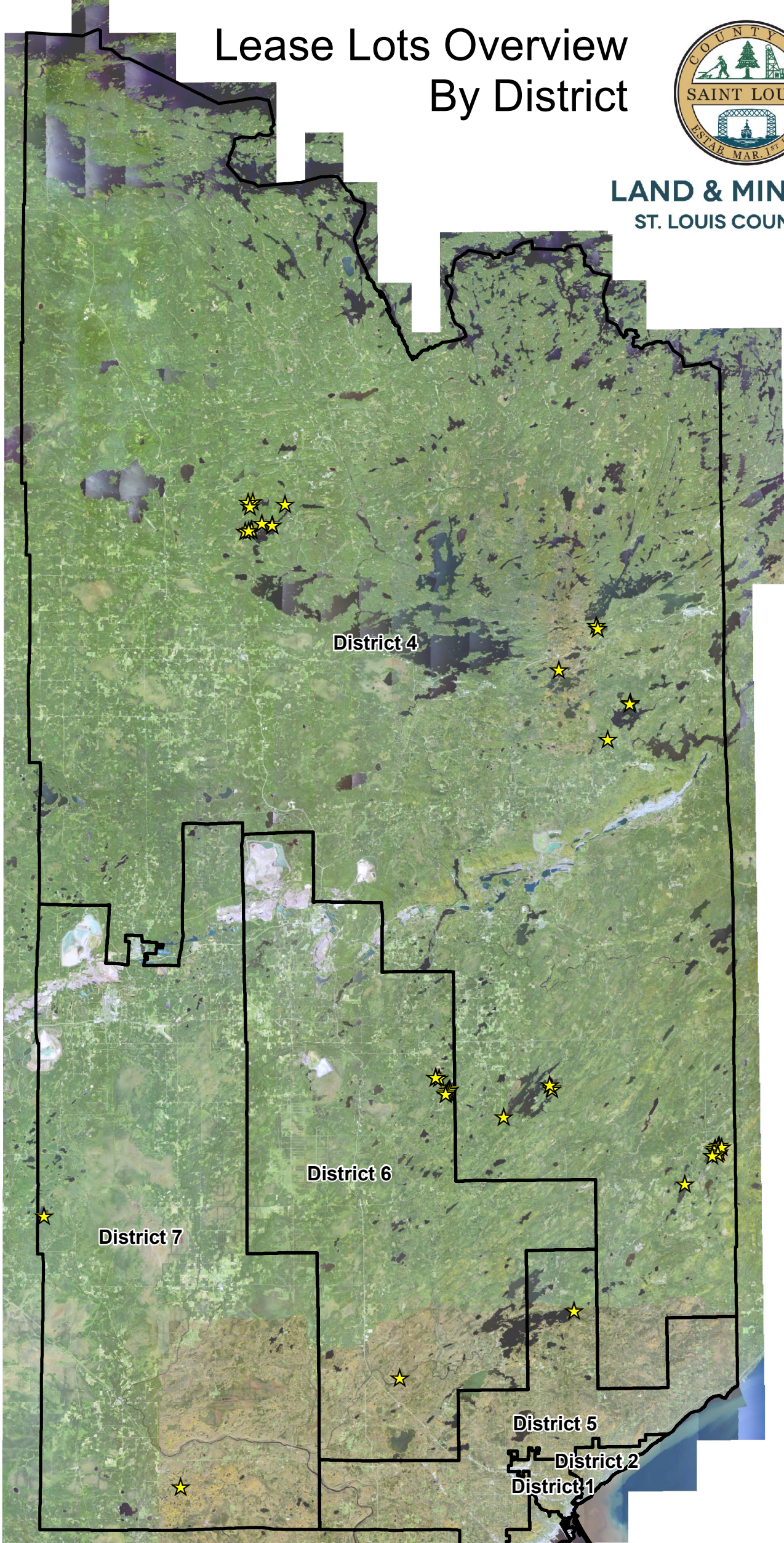
2021



Lease Lots Overview By District



LAND & MINERALS
ST. LOUIS COUNTY, MN



Legend

★ Shoreland Lease Lots



This drawing is neither a legally recorded map nor a survey and is not intended to be used as such. This drawing is a compilation of recorded information and data located in various city, county, state and federal offices. St. Louis County is not responsible for any incorrectness herein.

Created on
Date: 2/14/2022