



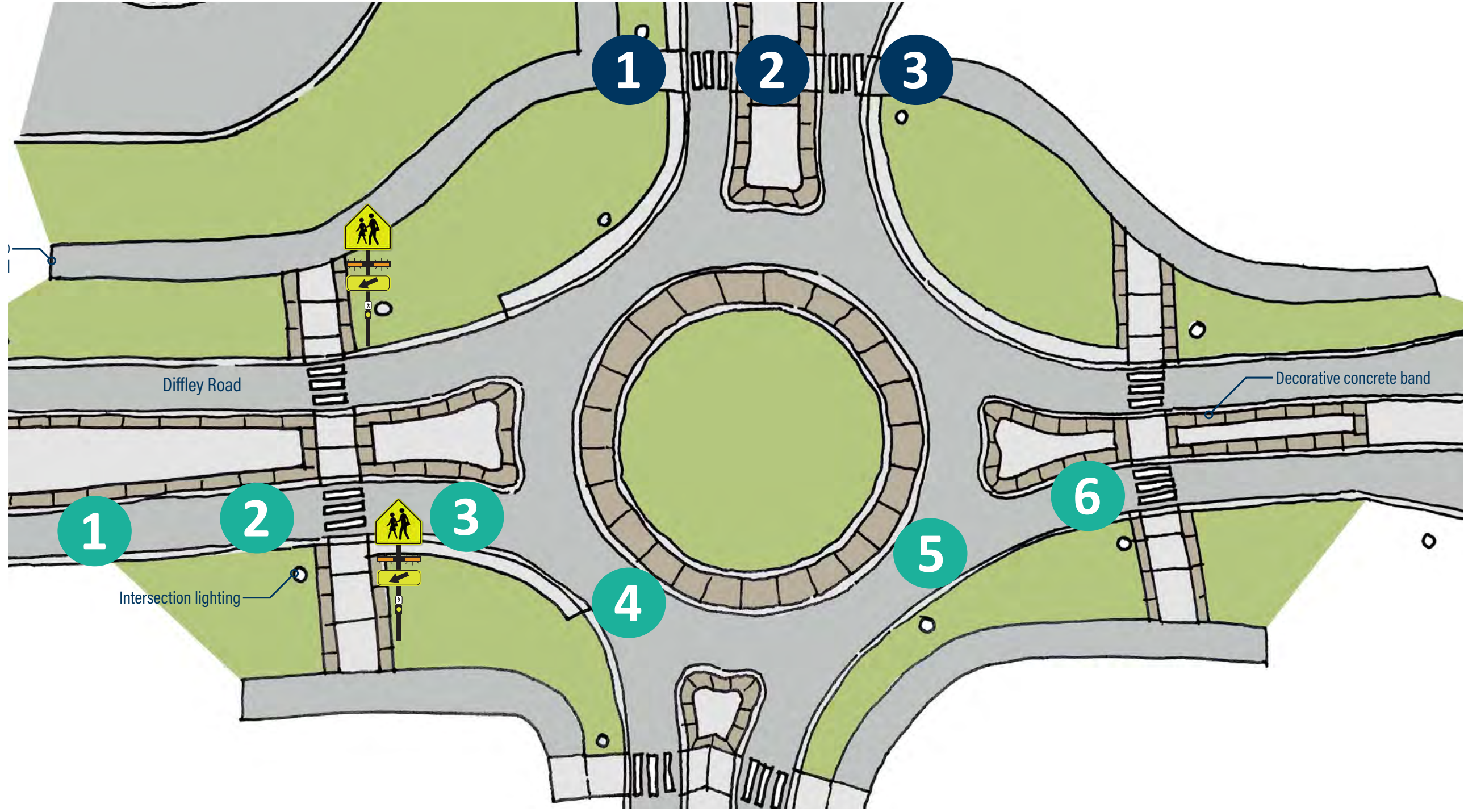
# DIFFLEY ROAD (COUNTY RD 30) SCHOOL AREA IMPROVEMENTS



## HOW TO PROPERLY NAVIGATE A ROUNDABOUT

### Driver Instructions

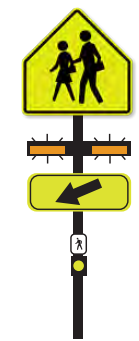
- 1 Slow down as you approach the roundabout.
- 2 Stop for any pedestrians in the crosswalk.
- 3 Yield to oncoming vehicles in the roundabout.
- 4 Find a gap to enter the roundabout.
- 5 Proceed to your exit.
- 6 As you depart, stop for any pedestrians in the crosswalk.



### Pedestrian Instructions

- 1 Wait on the sidewalk for a safe gap in traffic.\*
- 2 Cross to the raised center island.
- 3 Wait on the island until there is another safe gap in traffic.\*

\*Before crossing a travel lane always look in the direction of approaching traffic to ensure vehicles are slowing down or stopped.



Also check out the RRFB informational board!

### New Project Education & Enforcement

- Drivers education classes will provide a focus on how to properly navigate a roundabout.
- A Safe Routes to School (SRTS) Map shares the recommended student walking and biking routes and roadway crossings to travel to and from the schools.
- The City of Eagan Police are committed to extra patrol within the project area to help encourage drivers and pedestrians to properly use the new infrastructure.



**Benefits** A single-lane roundabout is designed to improve safety for all users.

**87%** fewer pedestrian injury crashes compared to a signalized intersection.

**2** pedestrian/vehicle interaction points vs. **6** interaction points in a traditional intersection

**REDUCES** CONGESTION DELAYS SERIOUS INJURY CRASHES

Roadway crossing distance is **1/2** the distance of a traditional intersection





# DIFFLEY ROAD (COUNTY RD 30) SCHOOL AREA IMPROVEMENTS



## HOW TO USE A PEDESTRIAN ACTIVATED RAPID FLASHING BEACON (RRFB) An **activated warning** to allow pedestrians to signal to drivers to stop so they can safely cross the road.

### *Pedestrian Instructions:*

- 1** Press the button to activate the flashing lights and alert motorists that you intend to cross.
- 2** Look in the direction of approaching traffic to ensure vehicles are slowing or stopped. *You can also signal your intention to cross by raising your arm.*
- 3** Once you see a safe gap in traffic, cross part way to the raised center median.
- 4** Press the button to activate the flashing lights and wait for a gap in traffic before crossing.
- 5** While crossing, continue to look for approaching vehicles.

### *RRFBs were installed at...*

- the Diffley Marketplace Crossing
- the west legs of the Daniel Drive and Braddock Trail roundabouts
- the Ventnor Avenue and Pennsylvania Avenue entrances of the Eagan High School Parking Lot



### *Benefits*

**REDUCES**



PEDESTRIAN  
CRASHES BY

**47%**

(National Cooperative Highway Research Program)

DRIVER YIELD RATES  
INCREASE FROM



**18% to 81%**

(National Cooperative Highway Research Program)

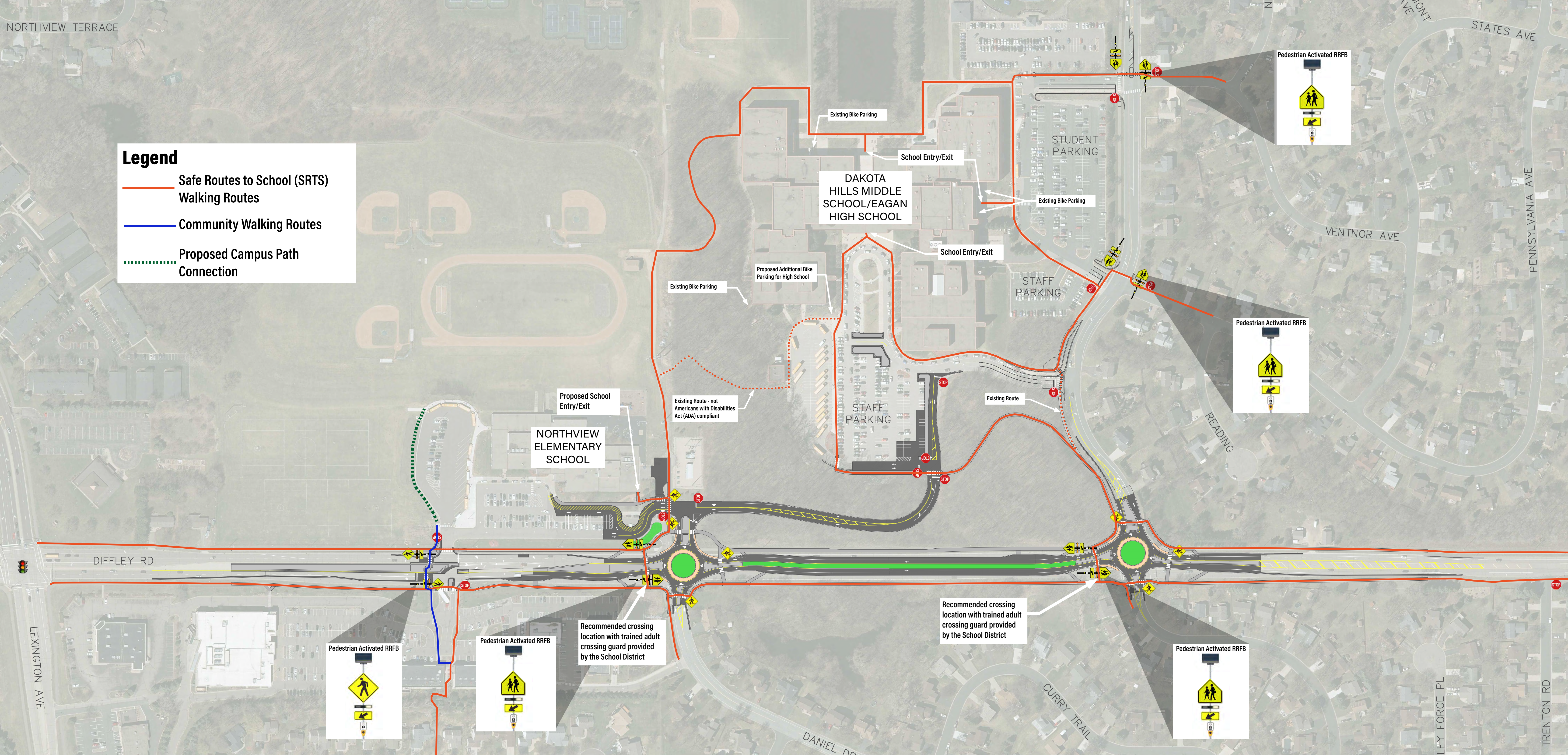




# DIFFLEY ROAD (COUNTY RD 30) SCHOOL AREA IMPROVEMENTS



## SAFE ROUTES TO SCHOOL (SRTS) MAP







# DIFFLEY ROAD (COUNTY RD 30) SCHOOL AREA IMPROVEMENTS



## SCHOOL ACCESS ROUTES

