



Regional Transportation

House Transportation Finance and Policy Committee



January 2023

Chair Charlie Zelle

metro council.org



Contents

Metropolitan Council Overview	2
Metro Transit	6
Metropolitan Transportation Services	13
Metropolitan Planning Organization	18
Metro Mobility	22
Other Regional Transit Providers	24
Budget	25

Metropolitan Council Overview



Metropolitan Council



Policy-making, planning, and coordination

- 17 members appointed by and serve at the pleasure of the Governor

Strategic investments, and services support regional economic vitality

- Create a financially sustainable 21st century transportation system
- Invest in infrastructure that supports economic development

Metropolitan Council

Community Development

Environmental Services

Transportation

Economic Development & Housing Grants
MN 473.251

Regional Land Use Planning
MN 473.851-867

Housing Services
MN 473.195

Wastewater
MN 473.511

Surface Water Quality
MN 473.157

Water Supply Planning
MN 473.1565

Regional Transportation Planning
MN 473.146

Transitway Development
MN 473.399

Transit Services
MN 473.385

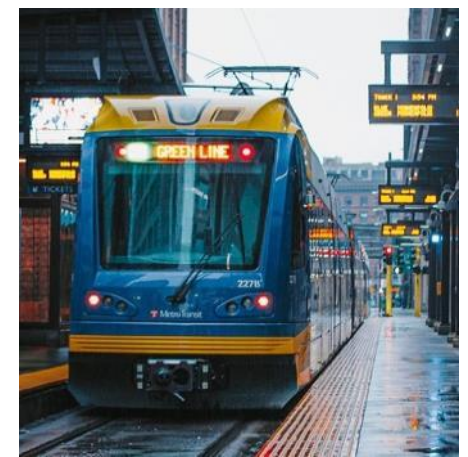
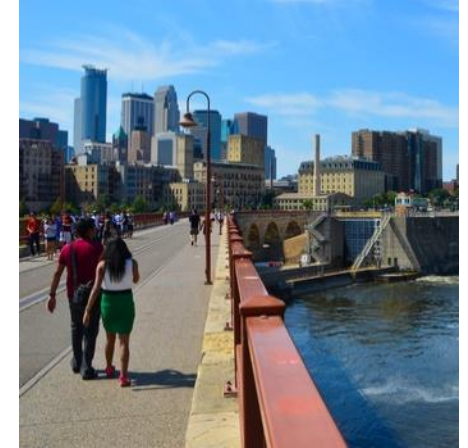
Transportation

Planning

- Serves as the region's federally required **Metropolitan Planning Organization**
- Performs long-range **transportation system planning**
- Shorter term federal transportation funds programming with the **Transportation Advisory Board**

Transit operations

- Provide, contract for, and coordinate **metropolitan transit operations**
- Provide financial assistance to other **regional transit providers**





Metro Transit

Metro Transit

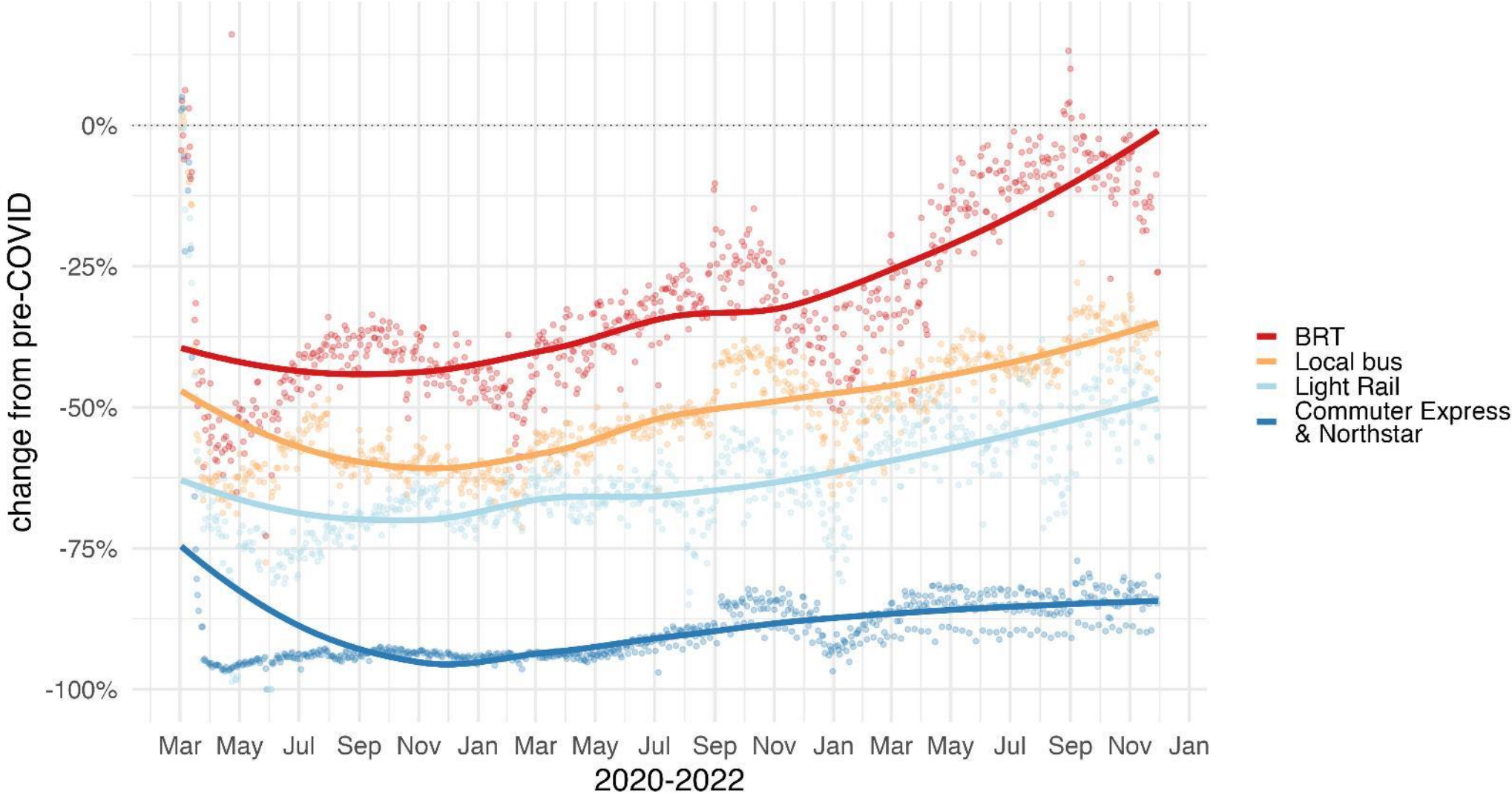


About

- Division of the Metropolitan Council
- Largest transit provider in the region
- Operates bus, light rail, and commuter rail

Metro Transit ridership is rebounding

- Averaging about 130,000 rides per weekday
- Systemwide, about 55% of pre-COVID ridership (45% down)



Trip purpose changes during COVID



A 2021 on-board travel behavior survey of the busiest Metro Transit lines found:

- Strong retention of trips for “life maintenance” activities (shopping, errands, appointments)
- Drop in share of 9 to 5 commutes
- Drop in trips for social and community purposes
- Similar transit use for trips to school and off-peak work commutes

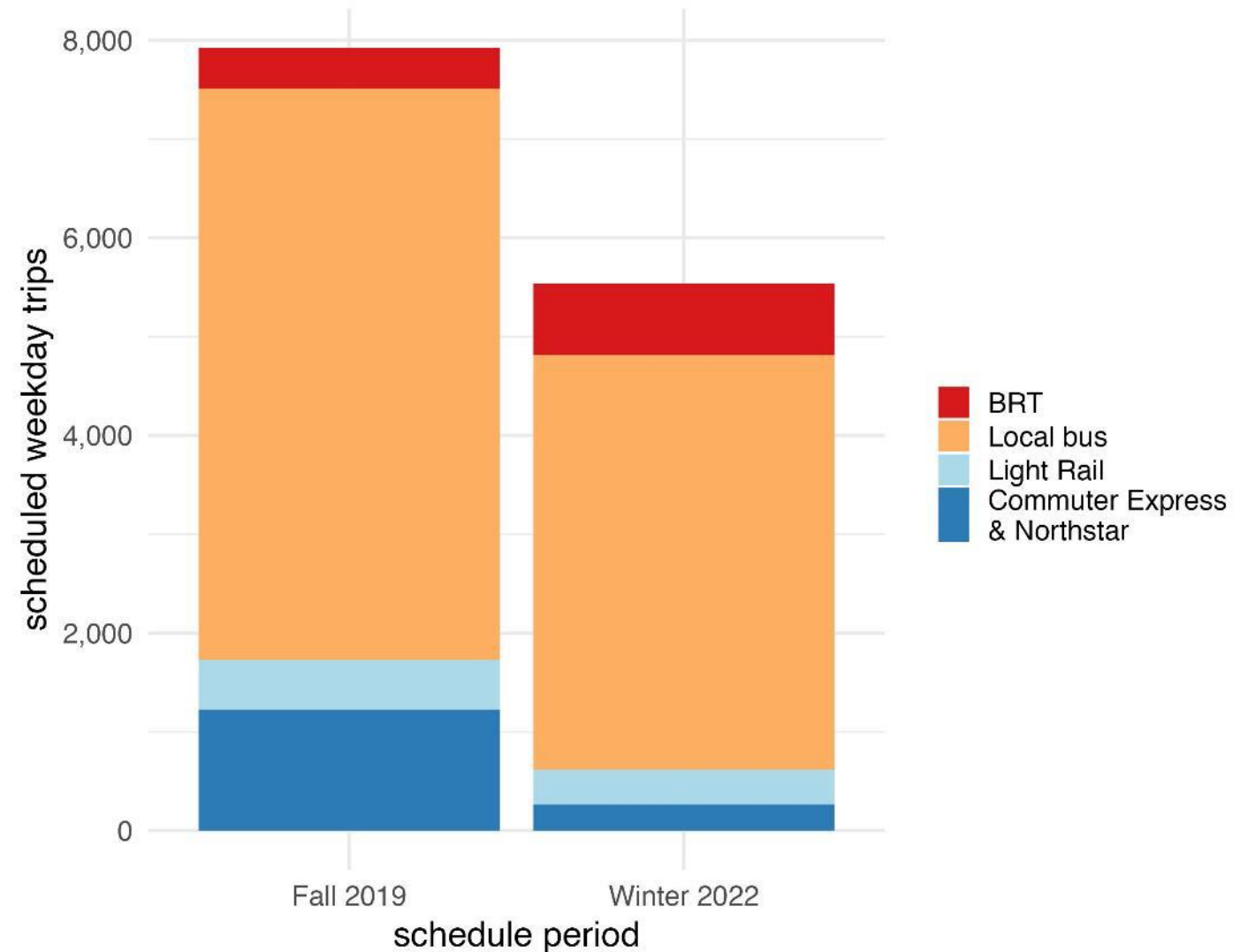
Full transit network survey results coming 2023

Metro Transit service levels



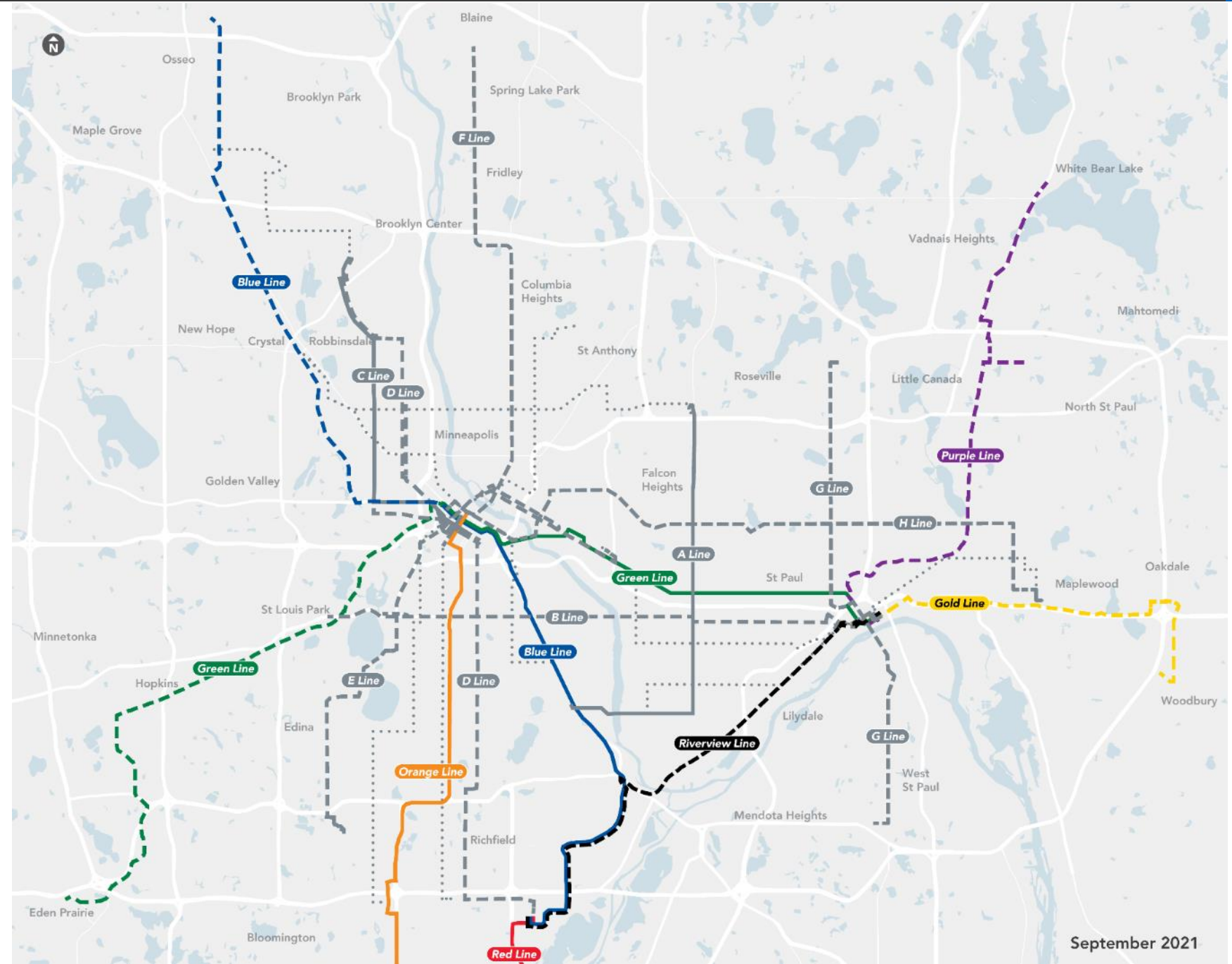
Current service hours are approximately 68% of 2019 service hours

Recent service reductions due to the shortage of operators



Strengthening the regional transit network

METRO line	Opened/Opening
Blue Line	2004
Green Line	2014
A Line	2016
C Line	2019
D Line	2022
B Line	2024
E Line	2025
Gold Line	2025
Purple Line	2026
F Line	2026
G Line	2025-2030
H Line	2025-2030
Green Line Extension	2027
Blue Line Extension	TBD

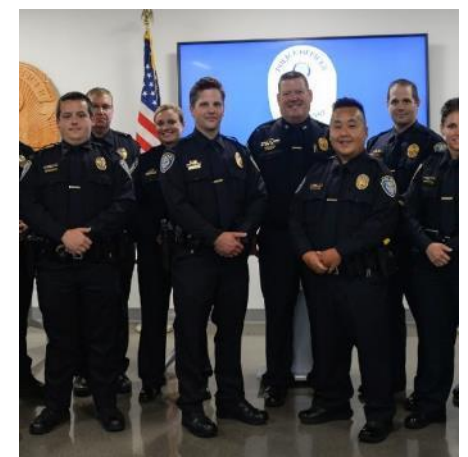


September 2021

Additional Metro Transit initiatives

Examples

- Safety & Security Action Plan
- Workforce Recruitment and Development
- Zero Emissions Bus Transition Plan
- Speed & Reliability Program
- Pass Programs, including new U of M Universal Transit Pass



Metropolitan Transportation Services



Transportation Services

Planning

- Serves as the region's federally required Metropolitan Planning Organization (MPO)
- Performs long-range transportation system planning for all modes
- Shorter term federal transportation funds programming

Transit operations

- Provide, contract for, and coordinate metropolitan transit operations
 - Metro Mobility
 - Fixed route bus
 - Transit Link
 - Metro Transit micro
 - Vanpool

Grants

- Administer transportation grants to local agencies and transit operators
- Provide financial assistance to local transit providers

Governed by state and federal law

State Law – Minnesota Land Planning Act (MS 473.146)

“The Council is the designated planning agency for any long-range comprehensive transportation planning...[and] shall assure administration and coordination of transportation planning with appropriate state, regional and other agencies, counties, and municipalities.”

Federal Law and Rules

- Metropolitan Transportation Planning 23 USC §134
- National Environmental Policy Act
- 1990 Clean Air Act and Conformity Rule
- Title VI Environmental Justice

Regional transportation planning



Transportation Policy Plan

- Long-range comprehensive policy plan for transportation
- Represents two of four required regional system plans: surface transportation and aviation
- Provides guidance on the regional transportation system for developing local comprehensive plans
- Council reviews local plan consistency and conformance with regional system plans

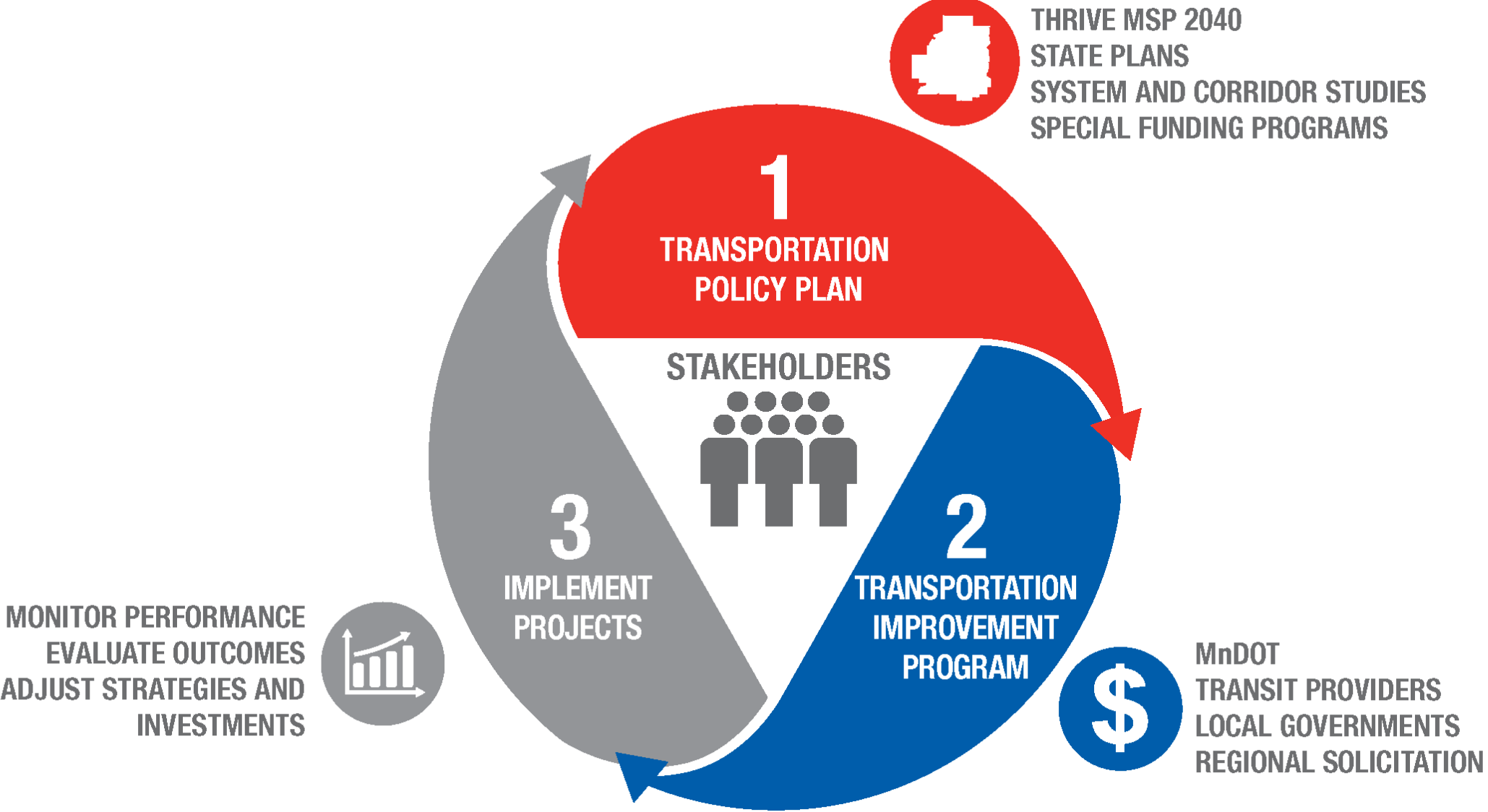
Transportation Policy Plan



Goals

- Transportation System Stewardship
- Safety and Security
- Access to Destinations
- Competitive Economy
- Healthy and Equitable Communities
- Leveraging Transportation Investments to Guide Land Use

Metropolitan Planning Organization



Transportation Advisory Board



34-member board

- 18 elected officials
 - 10 elected officials appointed by Metro Cities
 - 7 county board members
 - 1 Suburban Transit Association
- 4 agency members
 - Met Council, MnDOT, MPCA, MAC,
- 8 citizen members from each Met Council district
- 4 transportation mode members
 - 2 transit, 1 freight, 1 non-motorized

**State Statute 473.146
Subd. 4. Transportation planning**

Transportation Advisory Board



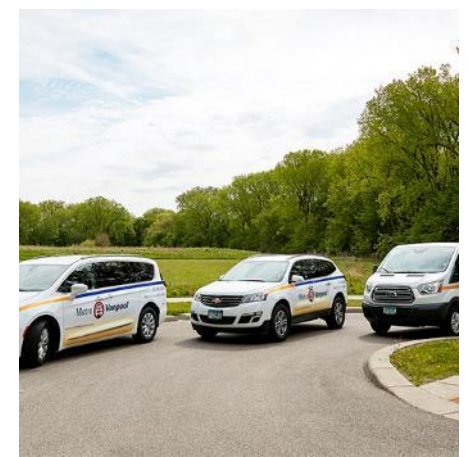
Functions

- Provides forum for state, regional and local officials, transportation providers and community members
- Reviews and comments on regional and statewide plans
- Solicits, evaluates and recommends local and regional projects to receive federal transportation funding
- Recommends the region's Transportation Improvement Program
 - Includes all regional projects that have federal transportation funds being spent over the next four years.

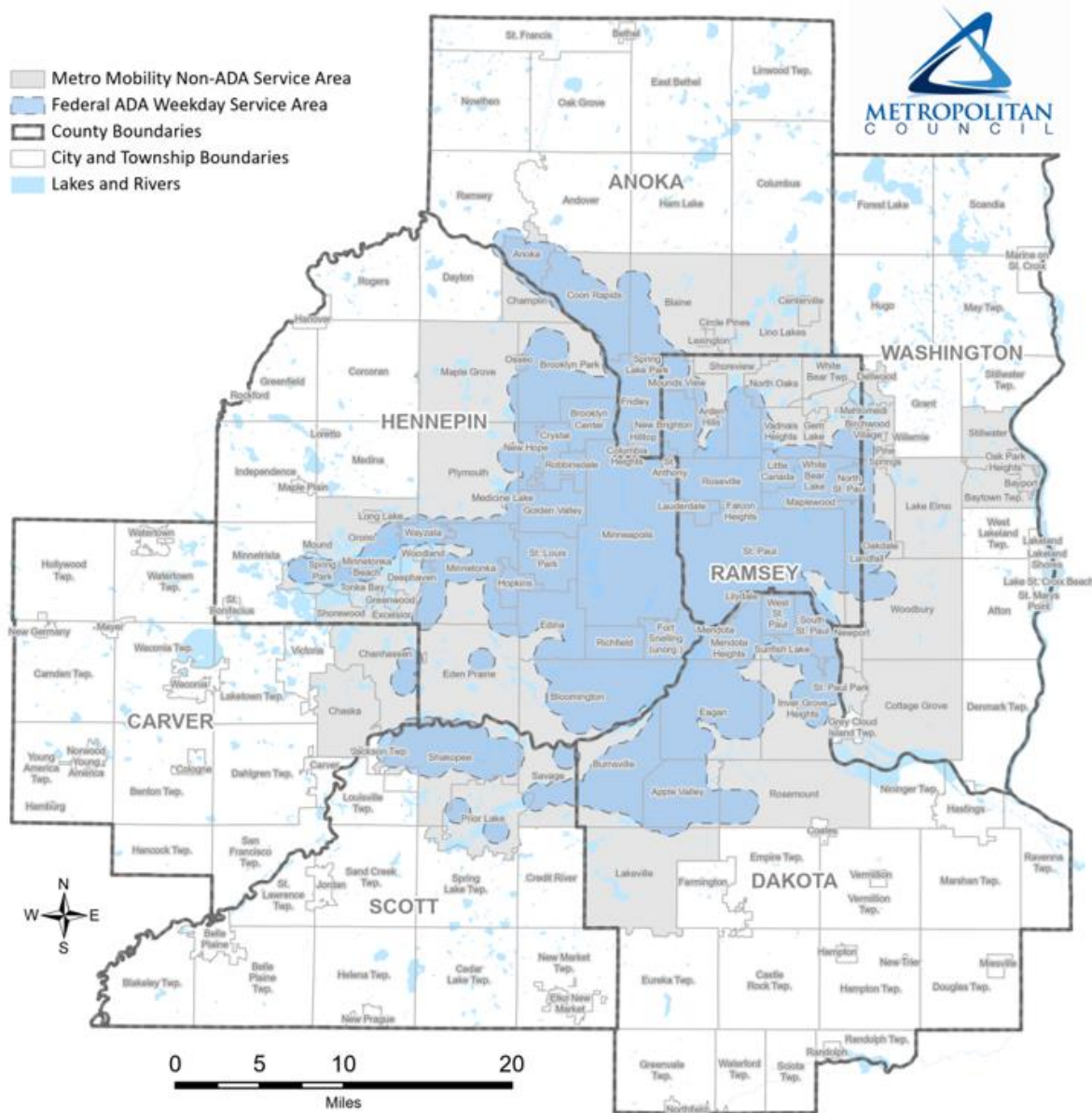
Metropolitan Transportation Services

Contracted transit operations

- **Fixed route** – backbone of public transit
- **Metro Mobility**
 - A shared ride, public transportation service for certified riders who are unable to use regular fixed-route buses due to a disability or health condition.
 - Federal and State: Service guaranteed as a civil right under the Americans with Disabilities Act (ADA); additional state requirements in 473.386
- **Transit Link** – Shared-ride public transport where regular route transit is infrequent or unavailable
- **Metro Vanpool** – Vanpools have five to 15 people sharing the ride to and from work an average of three or more days a week.
- **Regional Services** – includes fleet, technology, grants management, regional policy and provider performance reporting.



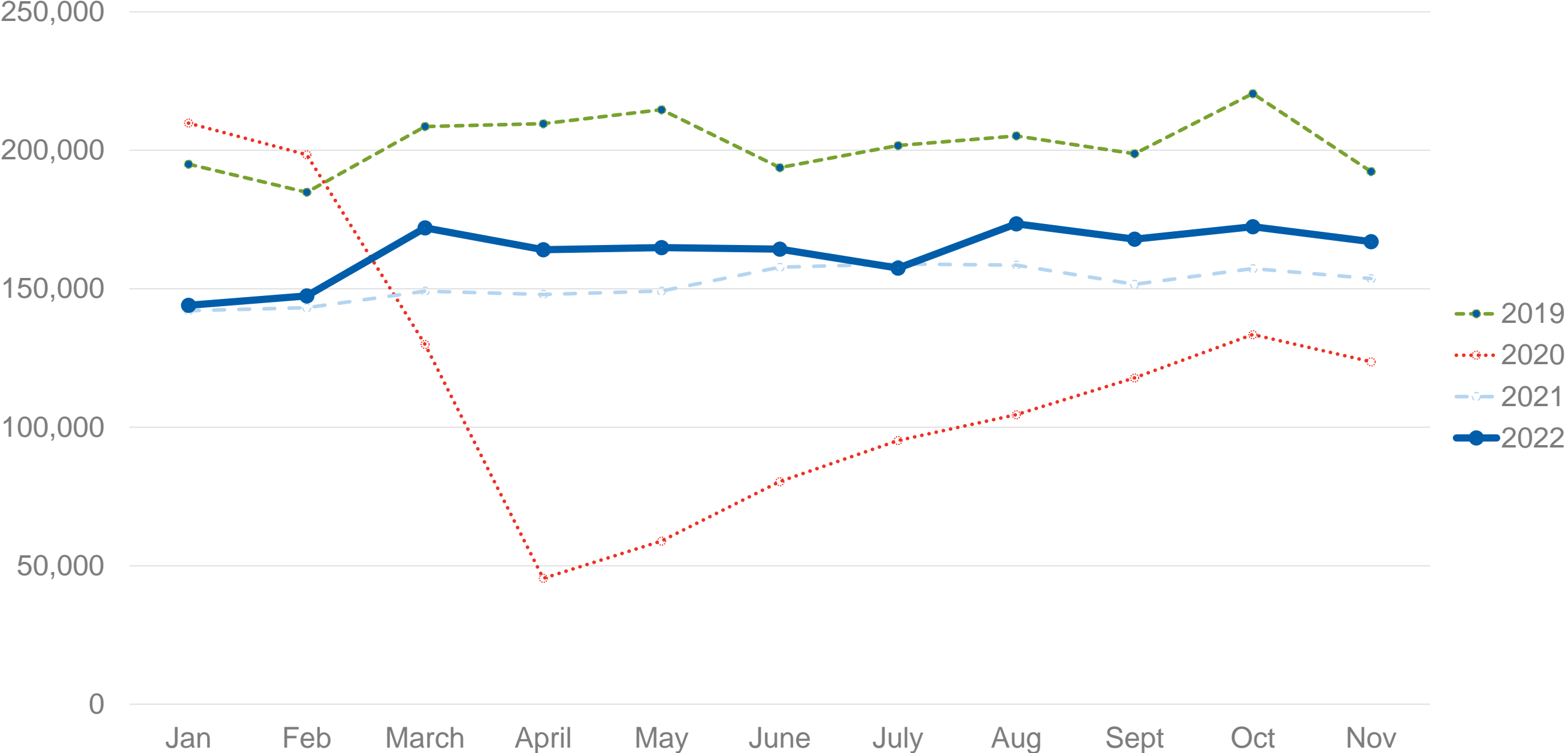
Metro Mobility



Service Areas

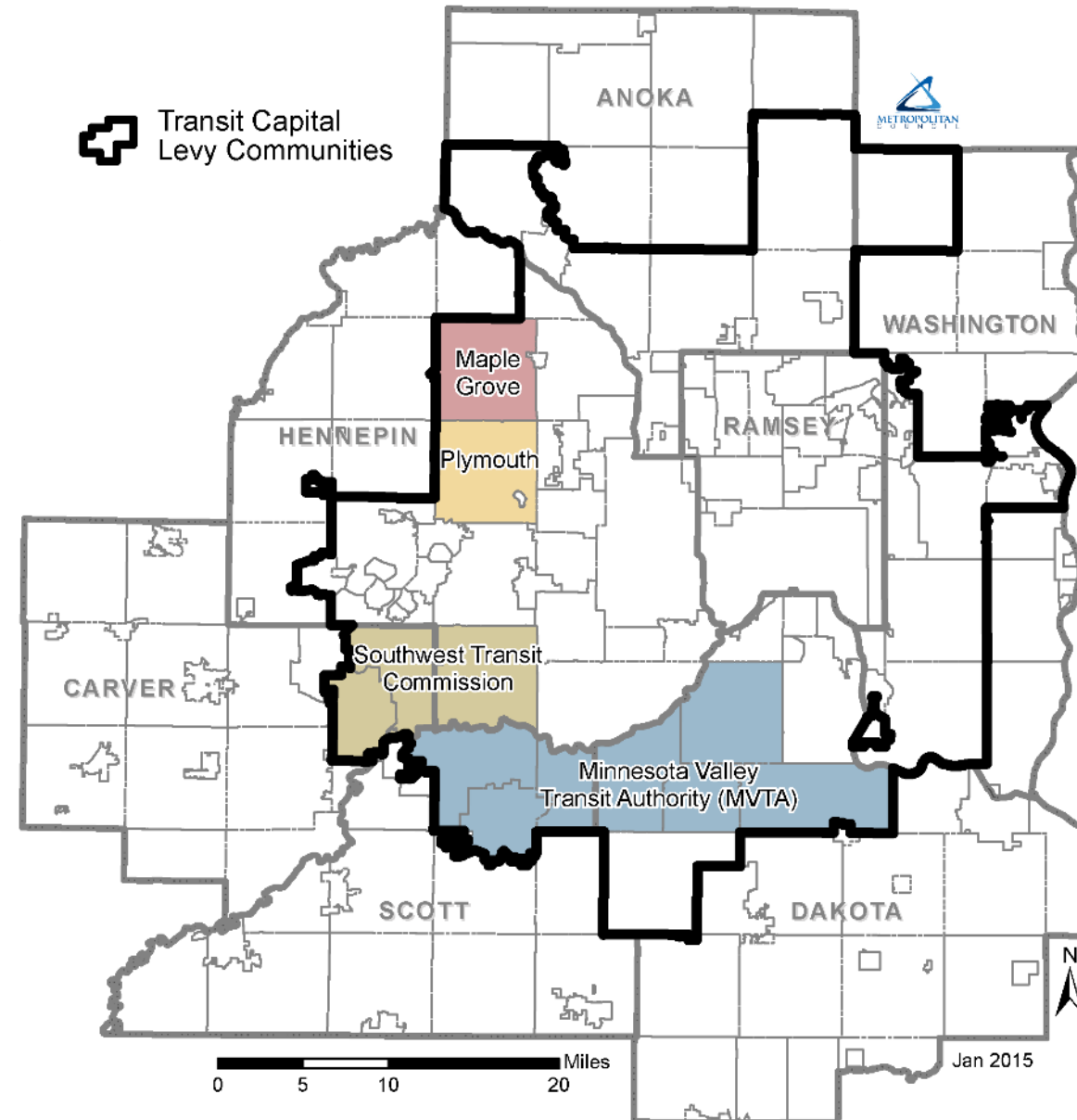
- **ADA service area** (light blue area)
 - FTA ADA mandated complementary Paratransit
 - Service provided within $\frac{3}{4}$ mile and similar hours of all-day regular route bus or rail
 - Guaranteed as a civil right
 - Subject to federally required service quality thresholds
 - Zero denials
- **Non-ADA service area** (grey area)
 - Service area fixed by State statute
 - Typically, 1/4 of Metro Mobility rides are non-ADA
 - Ride requests are placed on standby
 - Trip denials allowed depending on system operating capacity

Metro Mobility ridership nears pre-pandemic levels



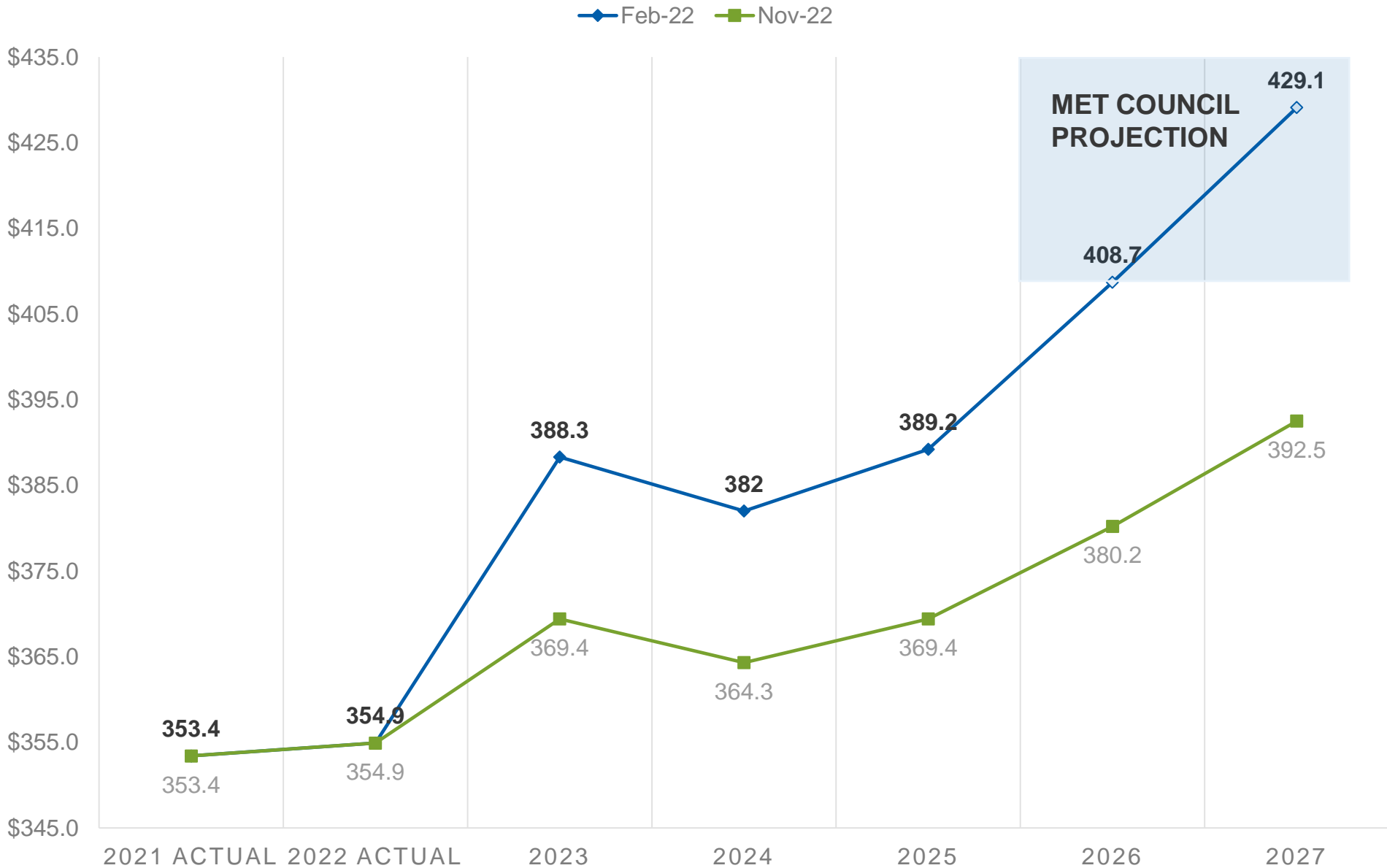
Other regional transit providers

- Minnesota Valley Transit Authority
- SouthWest Transit
- Maple Grove Transit
- Plymouth Metrolink
- University of Minnesota



Motor Vehicle Sales Tax revenues

NOV. 2022 VS. FEBRUARY 2022 FORECAST



- 5-year total loss of \$121.4M
- FY24-25 biennial MVST revenues to the Council and STP's reduced \$37.5 million, or 4.9%, from the Feb. forecast
- FY26-27 biennial MVST revenues to the Council and STP's reduced \$ 65.0 million, or 7.8%, from the Feb. forecast and Council planning estimates

Met Council transportation budget summary

	State Fiscal Years			
Nov 22 Forecast	2020-2021	2022-2023	2024-2025	2026-2027
Base Revenues for Operations	\$ 976.3	\$ 1,111.9	\$ 1,189.6	\$ 1,387.1
Metro Mobility Forecasted GF Support	-	-	-	228.4
Operating Expenses	1,149.8	1,228.6	1,503.3	1,685.9
Structural Position	\$ (173.5)	\$ (116.7)	\$ (313.7)	\$ (298.8)
One-Time Funding Solutions:				
Non-Base State Appropriation	36.2	-	-	-
Federal Relief Funds (CARES, CRRSAA, ARP)*	208.1	210.0	207.7	-
(Add)/ Use of Available Program Reserves	(70.8)	1.0	106.0	38.0
Transfer MVST to 6-Year CIP	-	(94.3)	-	-
Financial Position	\$ -	\$ -	\$ -	\$ (260.8)

* Total Federal Funds \$725.8M less CRRSAA Funds \$100M moved to Capital Project

Met Council transportation budget summary without federal funding

	State Fiscal Years			
Nov 22 Forecast	2020-2021	2022-2023	2024-2025	2026-2027
Base Revenues for Operations	\$ 976.3	\$ 1,111.9	\$ 1,189.6	\$ 1,387.1
Metro Mobility Forecasted GF Support	-	-	-	228.4
Operating Expenses	1,137.6	1,202.5	1,504.4	1,685.9
Structural Position	\$ (161.3)	\$ (90.6)	\$ (314.8)	\$ (298.8)
One-Time Funding Solutions:				
Non-Base State Appropriation	36.2	-	-	-
Federal Relief Funds (CARES, CRRSAA, ARP)	-	-	-	-
(Add)/ Use of Available Program Reserves	67.5	19.0	(6.0)	(6.0)
Transfer MVST to 6-Year CIP	-	(94.3)	-	-
Financial Position	\$ (57.6)	\$ (165.9)	\$ (320.8)	\$ (304.8)



Charlie Zelle

Met Council Chair

charles.zelle@metc.state.mn.us

Mary Bogie

Regional Administrator

mary.bogie@metc.state.mn.us

