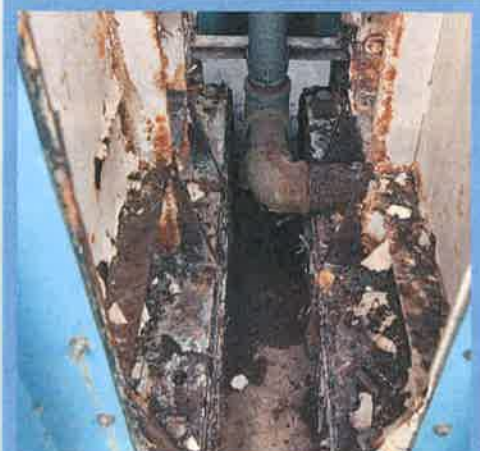




*Mississippi River
Pump Station:
Essential
Infrastructure
in Need of
Urgent
Rehabilitation*



**\$3.5M
SUPPORTS
THE FUTURE
OF DRINKING
WATER FOR
14 CITIES**





SAINT PAUL
REGIONAL
WATER
SERVICES

Mississippi River Pump Station Rehabilitation



Purpose of Funding Request

This proposal requests funding for support in the rehabilitation of the Fridley Pump Station, a critical facility that plays a vital role in supplying water to Saint Paul Regional Water Services (SPRWS). The Fridley Pump Station pumps water from the Mississippi River to SPRWS, which treats and delivers over 40 million gallons of water daily to more than 450,000 customers across 14 cities.

As a crucial piece of infrastructure, the pump station has served the region effectively for many decades. However, it is now in need of significant rehabilitation to ensure the ongoing, reliable supply of surface water to SPRWS for treatment. These improvements are imperative to help guarantee the continued availability of clean drinking water for the region.

Numerous vital components at the station are aging and in need of investment, including pumps and sealing water systems, flood protection equipment, corroded piping, and additional electrical infrastructure. SPRWS is currently working to prioritize improvements and equipment replacements since available funding is unlikely to be sufficient to cover full capital needs. Funding support of \$3.5M can ensure that many of the following high-priority improvements can occur efficiently in 2026-2030.

Electrical System Upgrades

Existing units are aging and susceptible to failure, posing a risk of station-wide shutdowns. This project will replace old transformers and switchgears to enhance reliability, redundancy, and safety. Upgrades include a revamped motor control center for better control, monitoring, and protection of pump motors.

Piping System Improvements

Upgrades will address corrosion or leaks, improving water flow, lowering energy use, and boosting station reliability. An updated HVAC system will also reduce condensation on pipe surfaces and provide better environmental control for equipment and personnel.

Standpipe (Surge Relief) Replacement

The existing standpipe, essential for raw water delivery through parallel conduits, is severely corroded and beyond its useful life. Replacing it will maintain surge relief, preserve water quality, and keep flows consistent.

Sluice Gates Replacement

Current sluice gates often fail to seal and require staff to work under unsafe conditions. This project replaces aging gates and corroded anchor bolts to prevent catastrophic failure during maintenance and protect personnel in the wetwell area.

Sump Pump and Flood Risk Reduction

Improvements to the sump pump system will effectively remove excess water during high river stages, reducing the flood risk in critical pump and motor areas.

Water Pumps and Motor Upgrades

Replacing or overhauling older pumps and motors increases reliability and reduces energy consumption, ensuring continued service for a large and growing customer base.

Mechanical Screen Intake System

Modernizing the screen system will help remove debris efficiently, optimize water intake capacity, and ensure safer maintenance conditions, thus protecting downstream equipment from clogs or damage.