



DOUGLAS COUNTY OVERVIEW

Douglas County, Minnesota, is a scenic west-central Minnesota county with an estimated population of about 39,000. Its county seat and largest city is Alexandria, a regional hub for commerce, healthcare, and services. The county also includes smaller cities such as Brandon, Carlos, Evansville, Forada, Garfield, Kensington, Millerville, Miltona, Nelson, and part of Osakis, along with numerous townships that reflect its rural character. Key business sectors in Douglas County include manufacturing, healthcare and social assistance, and retail trade, with other important contributions from agriculture, tourism, and hospitality driven by the area's lakes and outdoor recreation. Community life is supported by education and workforce initiatives, local development groups, and strong civic engagement, helping balance economic growth with small-town quality of life.



Conceptual rendering courtesy of JLG Architects

CONTACTS:

Dawn Dailey • Library Director
ddailey@douglascountylibrary.org
320.762.3015

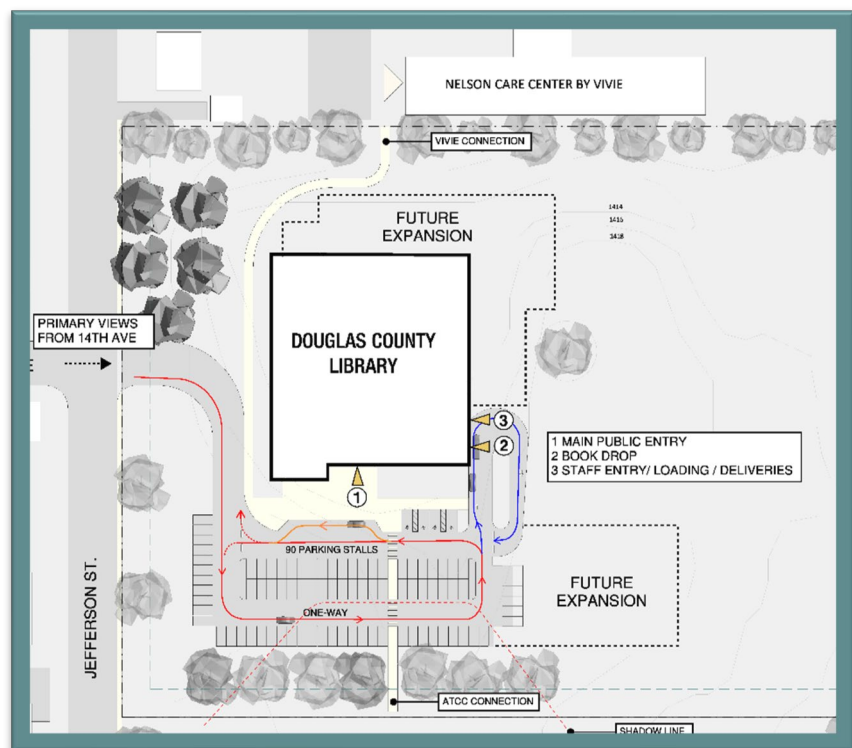
Kevin Lee • Library Board Chair
kleemiltona@gmail.com
320.491.3179

PROJECT VISION

The proposed project is the development of a new 34,000-square-foot public library designed to serve as a vibrant educational, cultural, and community hub for Douglas County. The facility will be constructed on a 10-acre site generously donated to support the long-term learning and civic needs of the community.

With an estimated total project cost of \$18.5 million, the new library will provide modern, flexible spaces that support literacy, lifelong learning, workforce development, and community engagement for residents of all ages. Planned features include expanded collections; technology-rich areas for digital access and innovation; dedicated spaces for children, teens, and adults; meeting rooms for public programs and community use; quiet study areas; and staff workspaces designed for efficient service delivery.

The library will be designed to accommodate future growth and evolving service needs, with infrastructure that supports current and emerging technologies. The expansive site allows for thoughtful placement of the building, safe and convenient access, ample parking, and potential outdoor learning or gathering spaces.



Site plan courtesy of JLG Architects

This project represents a significant investment in the educational and social infrastructure of Douglas County. By creating a welcoming, accessible, and forward-looking facility, the new library will strengthen county and community connections, enhance educational opportunities, and serve as a lasting resource for generations to come.

REGIONAL BENEFITS

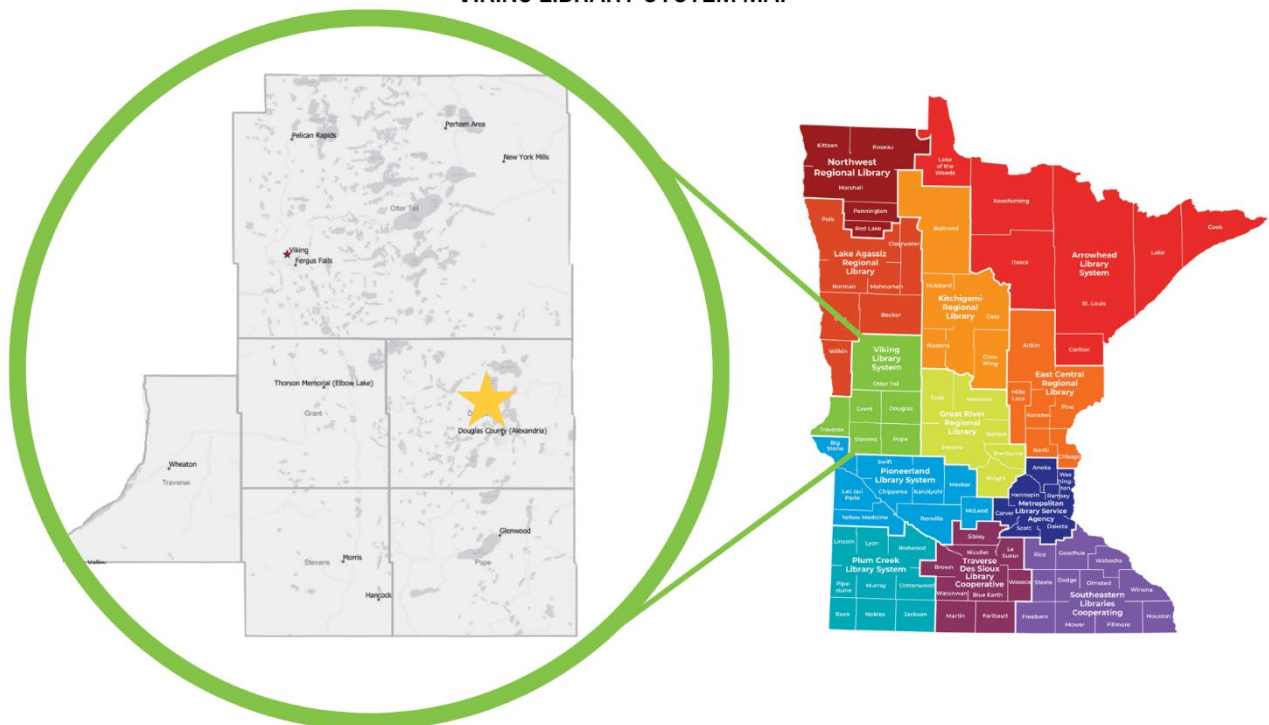
The Douglas County Public Library is one of the largest branches in the Viking Library System and one of the system's major lending libraries. It provides services to residents of 20 townships within Douglas County, as well as to 10 additional library communities across the six-county service area, and supplies materials for the regional bookmobile. While 45.81% of patrons reside within the Alexandria city limits, the remaining 54.19% live outside the city limits across Douglas County's 20 townships and 10 towns. The Douglas County Public Library also provides materials to 11 other library systems across Minnesota.

Calculation:

$$(6,963 \text{ Alex city card holders} \div 15,200 \text{ Alex city pop}) \times 100 \approx \mathbf{45.81\%}$$

Douglas County has experienced steady growth, with a 19% increase in population between 2000 and 2020. The Douglas County Public Library serves a significant portion of the community, with 15,411 registered cardholders representing 39% of the county's population. In 2024, patrons borrowed a total of 333,054 items, demonstrating strong and consistent use of library resources. On average, the library welcomes approximately 450 visits each day, highlighting its role as a central and heavily utilized community service.

VIKING LIBRARY SYSTEM MAP

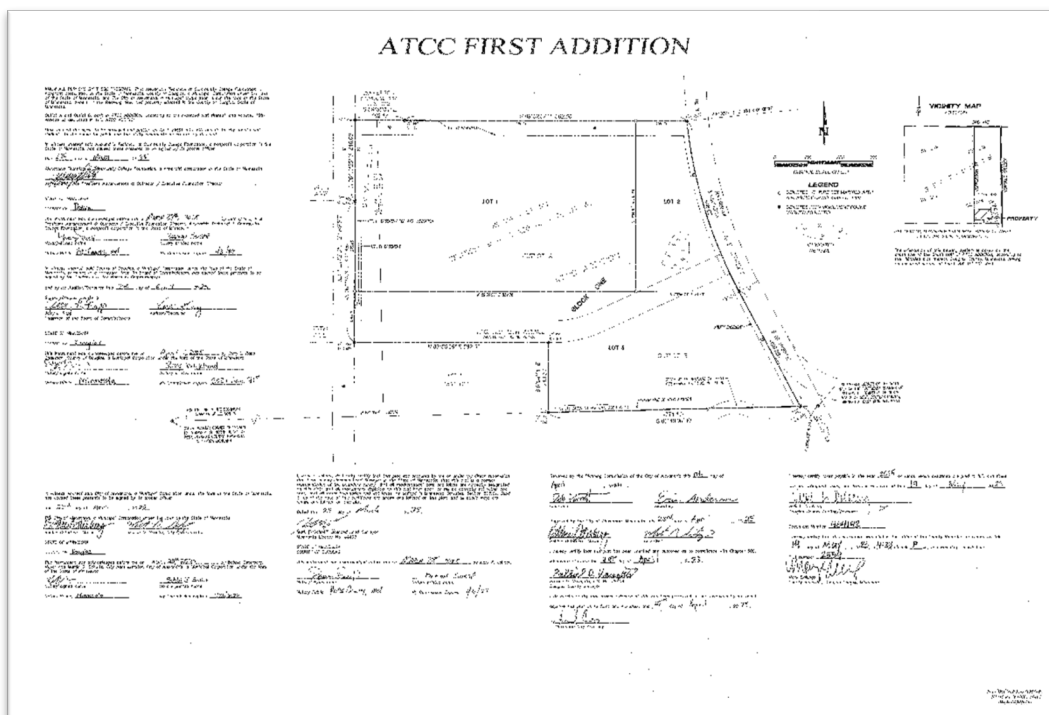


FLOOR PLAN



Floor plan courtesy of JLG Architects

PLAT



Plat courtesy of Douglas County Auditor/Treasurer