

Understanding climate & environmental disparities in Minnesota

Anjali Bains

Lead Director, Energy Access and Equity

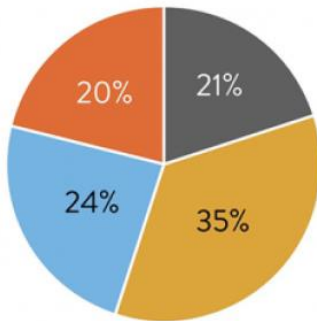
Minnesota House Climate and Energy
Finance and Policy Committee

January 17, 2023



1

Sources of Air Pollution



- On-road vehicles 24%
Cars and trucks, etc.
- Off-road vehicles and equipment 20%
Construction, agriculture, and yard, etc.
- Neighborhood sources 35%
Dry cleaners, home heating, backyard fires, etc.
- Industrial facilities 21%
Factories, power plants, etc.

Small and widespread sources are the largest portion of overall air pollution emissions in Minnesota.

Figure: Minnesota Pollution Control Agency

2

Sources of Climate Pollution

- Transportation is the largest contributor of GHGs – and **almost 60%** of its emissions are from passenger vehicles
- **Power plants** are also a big contributor still along with **agriculture**
- **Industrial sources** significant as well

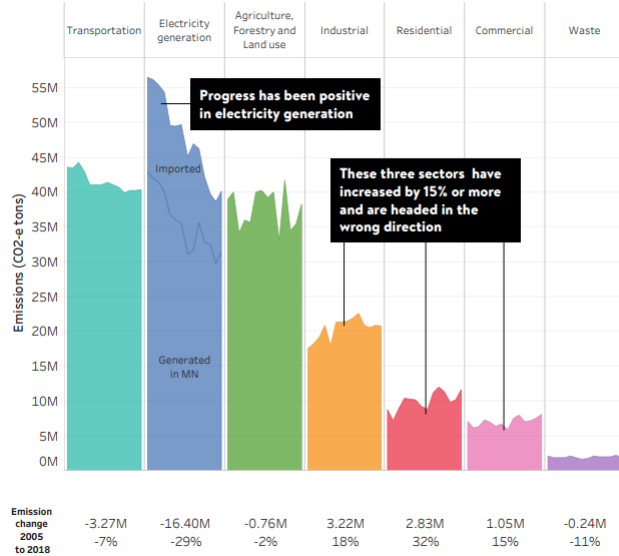


Figure: Minnesota Pollution Control Agency

3

Air Pollution is Unevenly Distributed

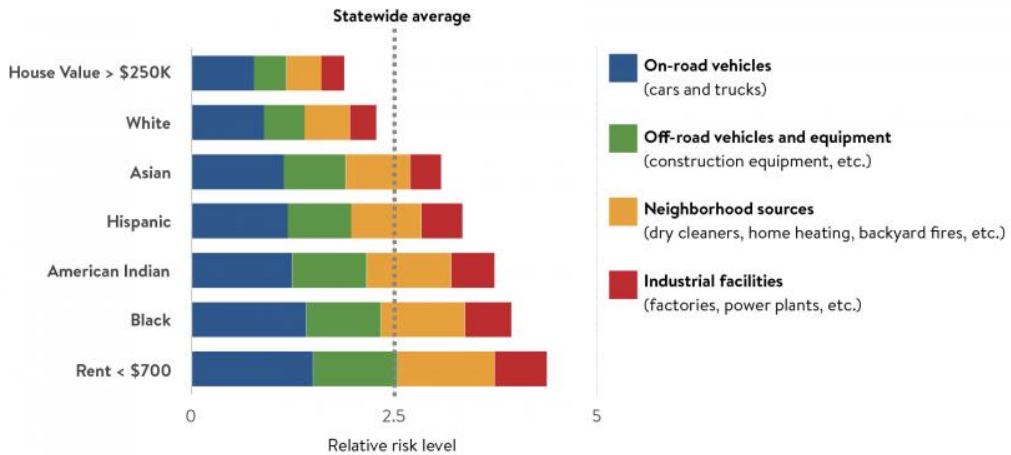
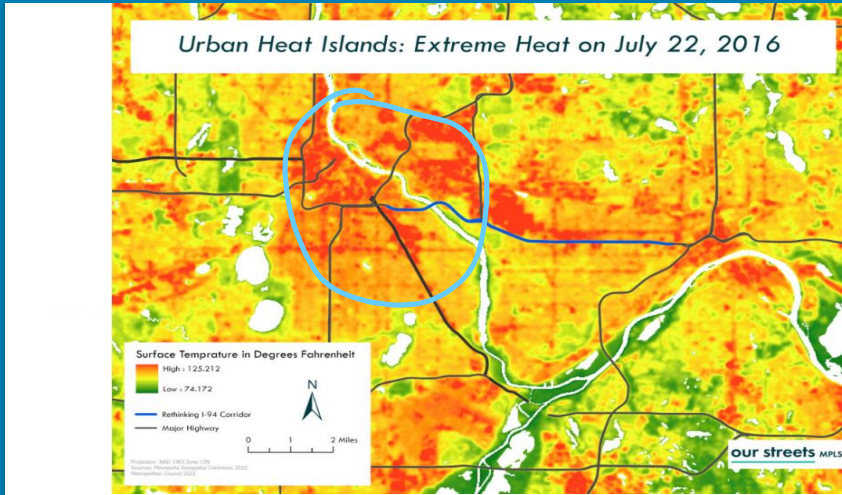


Figure: Minnesota Pollution Control Agency

4

Climate Harm is Unevenly Distributed

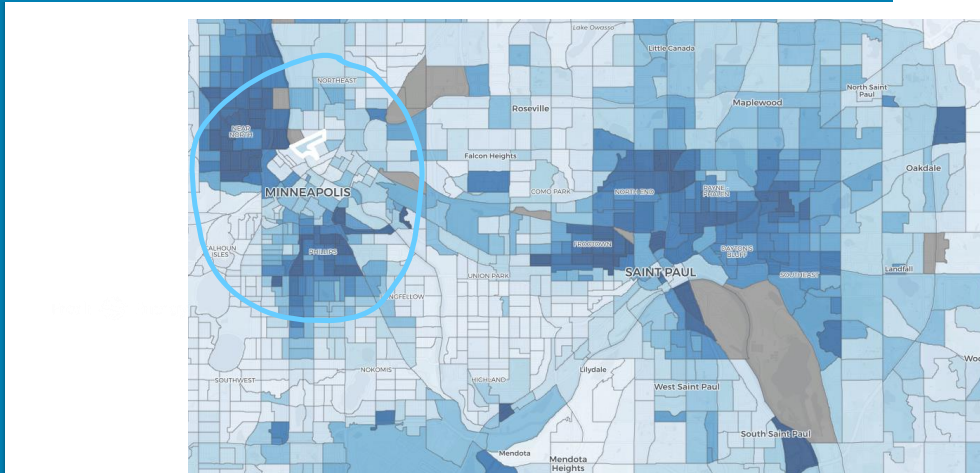


Color corresponds with surface temperature
red = over 100°F
Green = ~below 80°F

Figure: Metropolitan Council via Our Streets MPLS

5

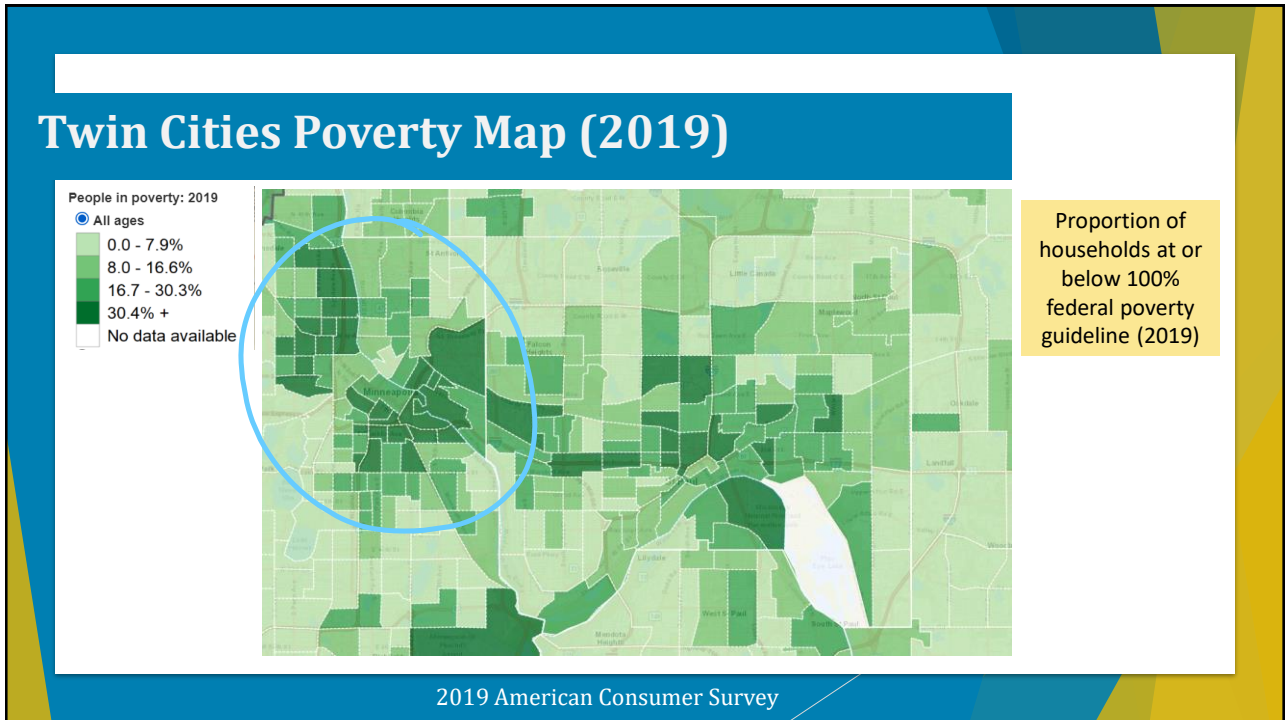
Twin Cities Racial Demographics (2020)



Proportion of residents who identify as non-white

Screenshot via 2020 Census Map (Metropolitan Council)

6



7

What should we do to address these inequities?

Design the transition to a clean energy economy to be **inclusive of and benefiting ALL** Minnesotans.

- ▶ Increase access to and affordability of **clean transportation**, incl. buses and active transportation, EV carsharing
- ▶ Diversify and develop a **clean energy workforce** representative of state demographics (e.g. race, gender)
- ▶ **Ensuring decision-making includes and is influenced** by communities most impacted by climate change and pollution
- ▶ ...and many more!

Fresh Energy

8

Thank You!



Mari Ojeda
ojeda@fresh-energy.org



Anjali Bains
bains@fresh-energy.org