

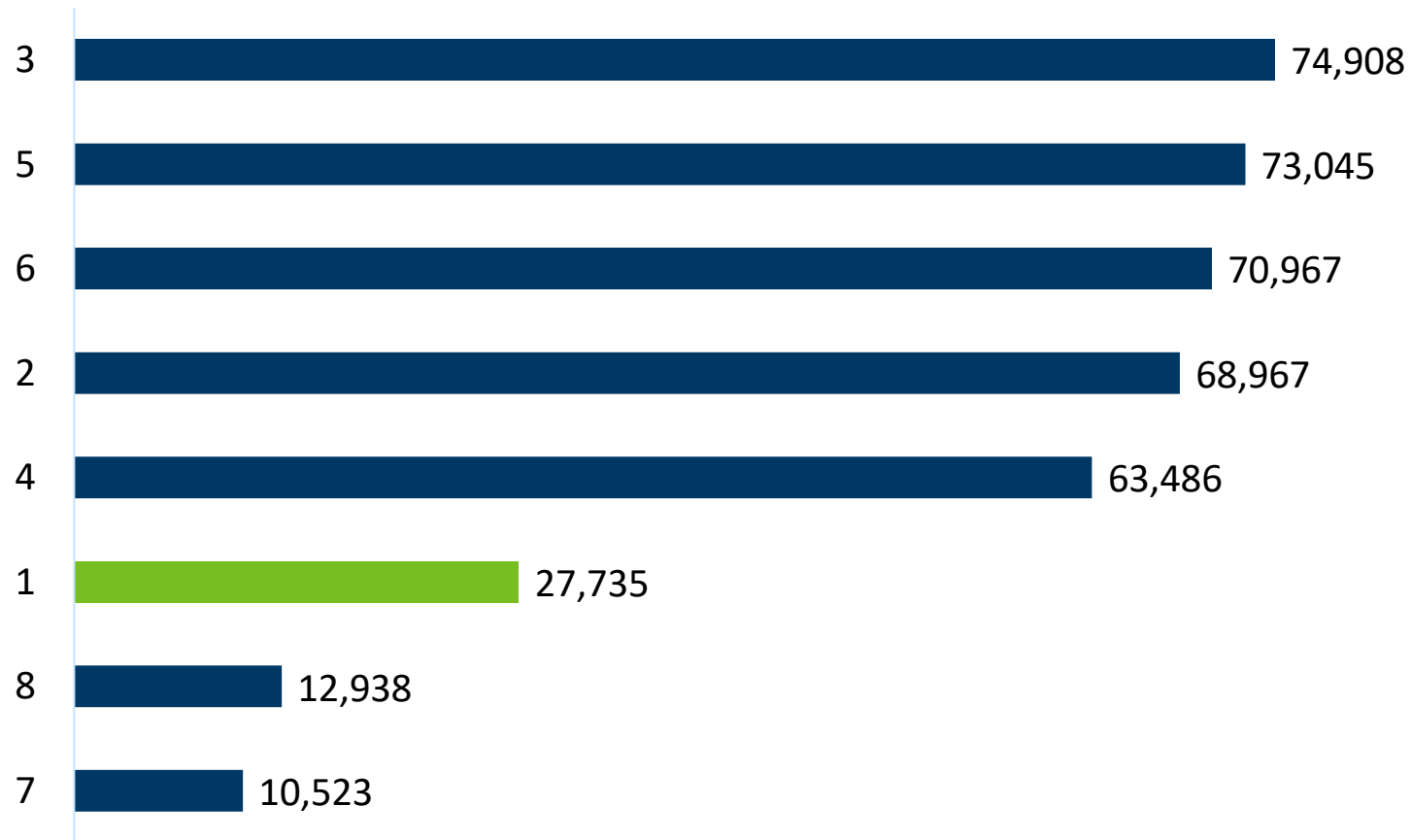


Population Change in Congressional District 1

Susan Brower | Minnesota State Demographer

Growth in Minnesota's U.S. Congressional Districts

Population Change by Congressional District, 2010-2020



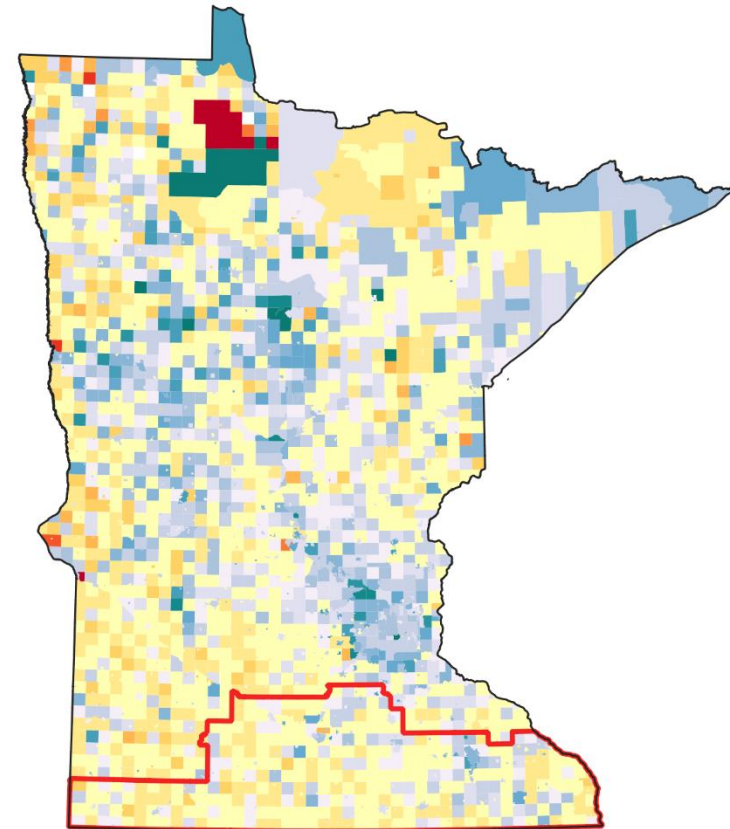
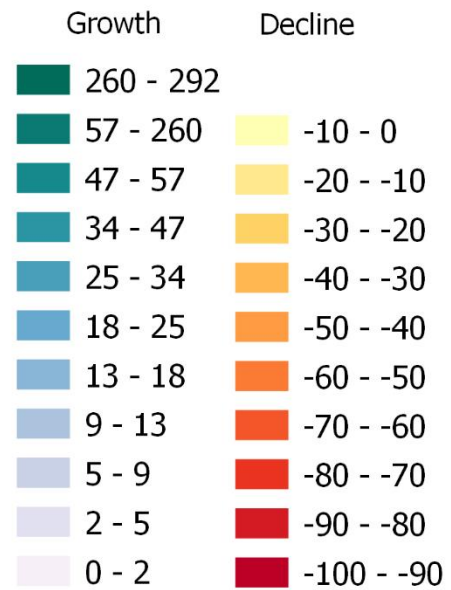
Ideal population size:
713,312

CD 1 2020 Population:
690,726

Difference= **-22,586**

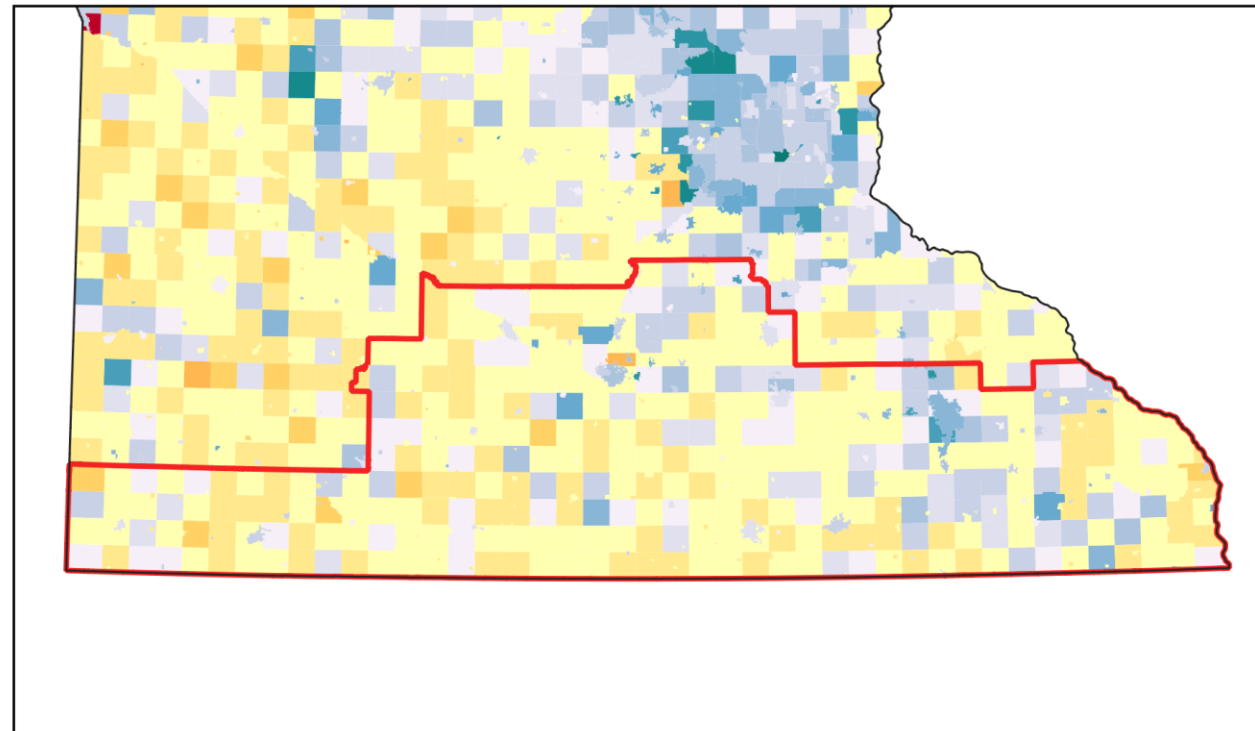
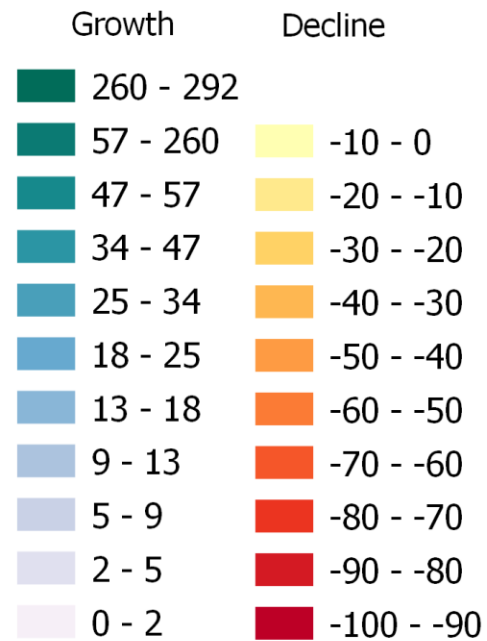
Percent Change in the Cities and Townships of District 1

Population Percent Change
2010 to 2020



Percent Change: A Closer Look at District 1

Population Percent Change
2010 to 2020



CD1 2020 Total Population by County

	Total population
Blue Earth	69,112
Brown	25,912
Cottonwood	3,625
Dodge	20,867
Faribault	13,921
Fillmore	21,228
Freeborn	30,895
Houston	18,843
Jackson	9,989
Le Sueur	28,674
Martin	20,025
Mower	40,029
Nicollet	34,454
Nobles	22,290
Olmsted	162,847
Rice	41,013
Rock	9,704
Steele	37,406
Waseca	18,968
Watonwan	11,253
Winona	49,671
Total	690,726

Population Change in Congressional District 1

	2010	2020	Difference	Percent Difference
White	586,265	566,704	(19,561)	-3%
Black or African American	15,277	26,946	11,669	43%
Native American	1,567	1,789	222	12%
Asian	14,750	20,178	5,428	27%
Native Hawaiian and Other Pacific Islander	199	496	297	60%
Some Other Race	515	1,800	1,285	71%
Multiple Races	7,802	21,487	13,685	64%
Hispanic or Latino	36,616	51,326	14,710	29%
Total	662,991	690,726	27,735	4%

Changes in Data Collection

- Changes to the race and ethnicity questions on the 2020 Census allowed for more opportunity to write in racial and ethnic groups.
- This has painted a better picture of how individuals view themselves, which in turn has shown that we are a more multiracial society than previous data has been able to show.
- While not solely responsible for the changes, it has corresponded with an increase in the “Some other race” and Multiple race categories.

Other Data Considerations

- The 2020 Census was conducted during a world-wide pandemic, which required the Census Bureau to make several adjustments to the operational plan.
- There was unprecedented uncertainty regarding aspects of the Census—even before the pandemic—that caused concern regarding individuals' willingness to respond to the Census.
- This is the first census to implement Differential Privacy (DP) as the Disclosure Avoidance System (DAS) to protect respondents' confidentiality.

Thank you again!

Susan Brower, PhD

susan.brower@state.mn.us